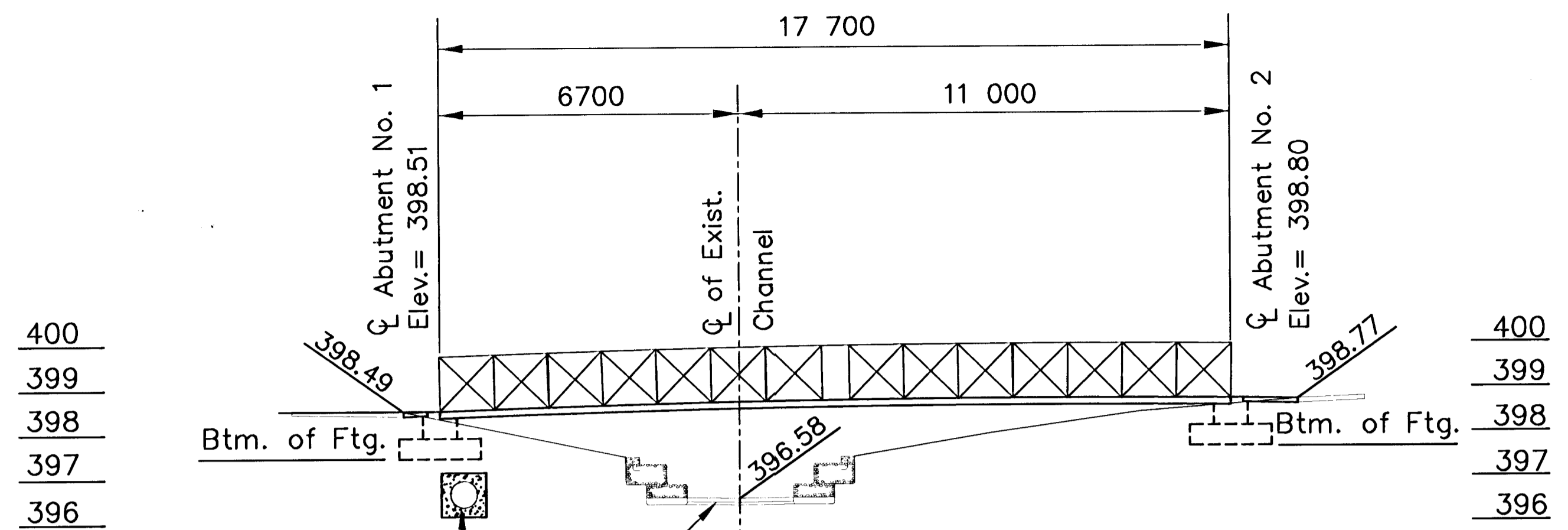


DATE	
BY	
REFERENCES NOTED	
REFERENCES CHECKED	

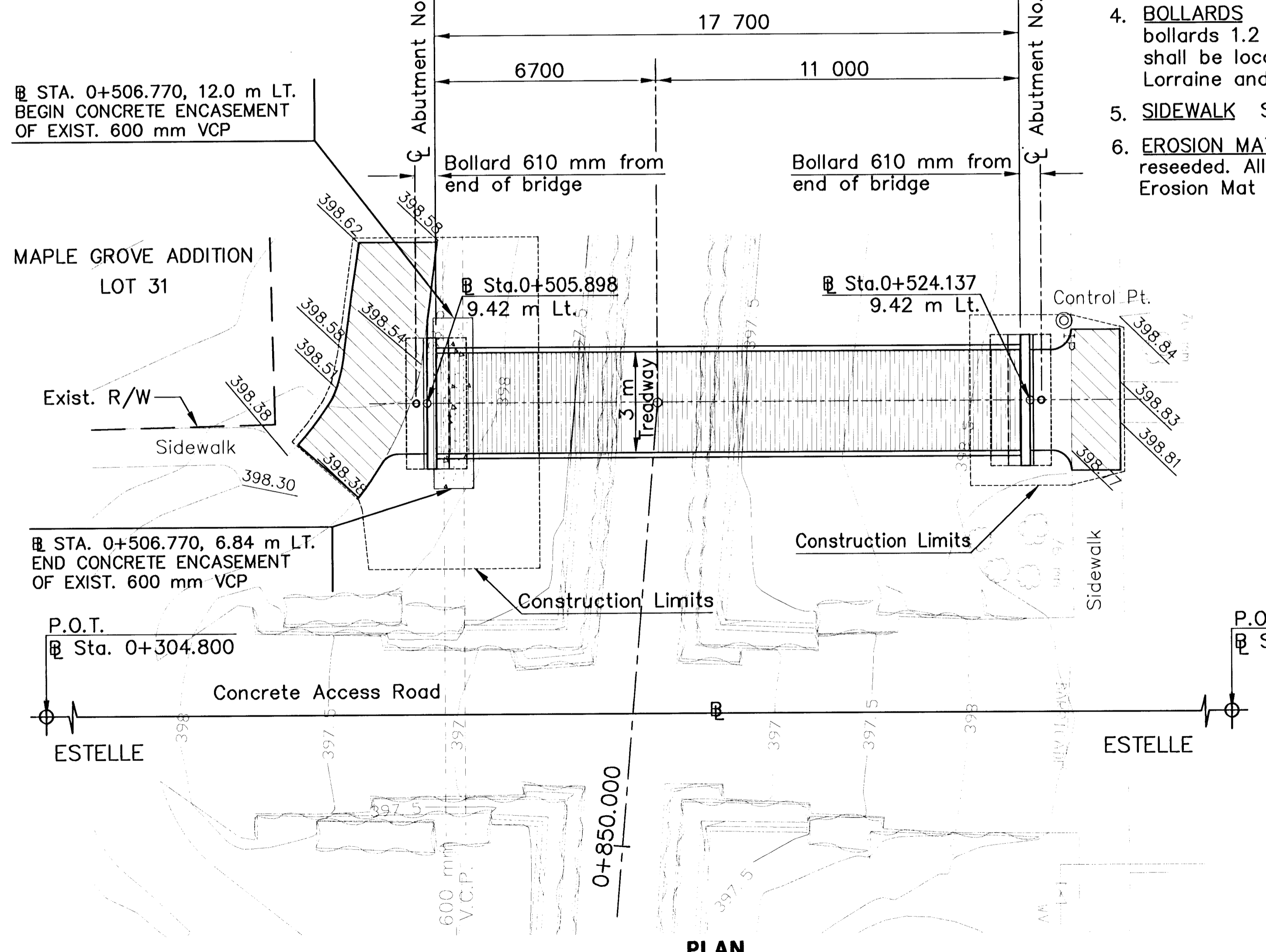


ELEVATION

(Looking Downstream)
 17.7 m Weathering Steel Span Pedestrian Bridge
 3.0 m Treadway

P.O.T. @ Sta. 0+304.800.
 1. Thimble located at North R/W 2nd Street and CL Estelle Street.
 2. X 6096.000 Y 6096.009

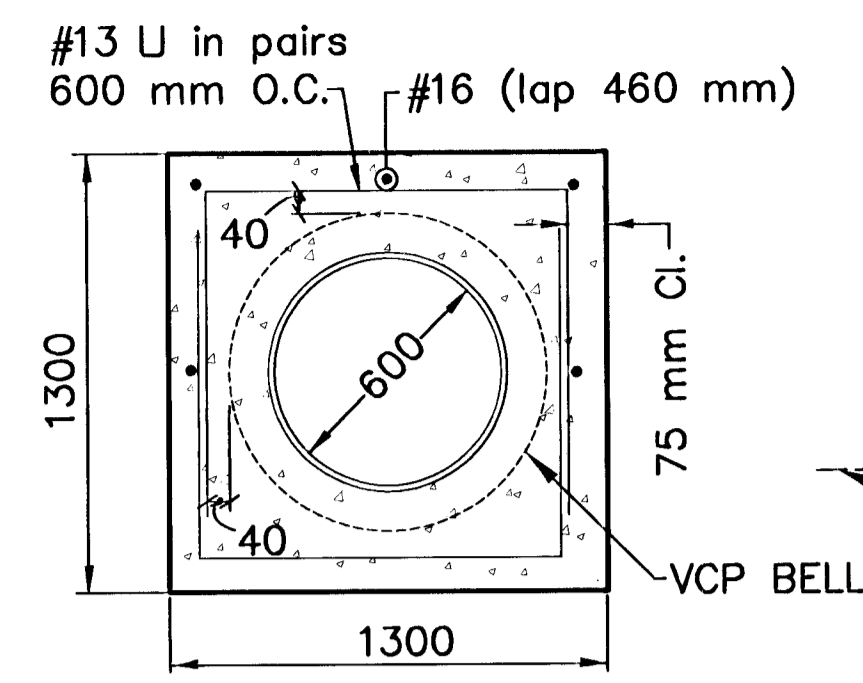
P.O.T. @ Sta. 0+687.736.
 1. Thimble located at South R/W Central Street and CL Estelle Street.
 2. X 6096.003 Y 6478.938



PLAN

BM "1" CUT ON TOP OF WEST CURB ON VOLUTSIA BETWEEN HOUSE #409 & #415 ELEV. = 399.651

BM "1" CUT ON TOP OF WEST CURB ON ESTELLE BETWEEN HOUSE #351 & #355 STA. 0+470.178, 4.59 m LT. ELEV. = 399.166



CONCRETE ENCASEMENT DETAIL

GENERAL NOTES:

- CONCRETE** The concrete used throughout the structure shall be the concrete paving mix for the City of Wichita ($f'_c=28$ MPa). The concrete shall have a minimum age of 14 days prior to additional construction on the foundations. All exposed concrete surfaced to be light broom finished.
- REINFORCING STEEL** The reinforcing steel used throughout shall conform to ASTM A615, Grade 280 or Grade 420. All bending and placing shall conform to the "Manual of Standard Practice", Concrete Reinforcing Steel Institute.
- EARTH FILL** Earth Fill areas at abutments shall be compacted to 98% Standard Density.
- BOLLARDS** Bollards shall be 200 mm steel/concrete filled. Set 2.1 m long bollards 1.2 m into ground. Paint steel pipe with bright yellow paint. Bollards shall be located 610 mm beyond end of bridge. Bollards shall match those at Lorraine and Minnesota Avenue Pedestrian Bridges.
- SIDEWALK** Sidewalk approaches to be 100 mm thick concrete.
- EROSION MAT** All disturbed areas shall have the erosion mat replaced and be reseeded. All material, equipment and labor necessary for the installation of the Erosion Mat and Seed shall be subsidiary to the bridge.

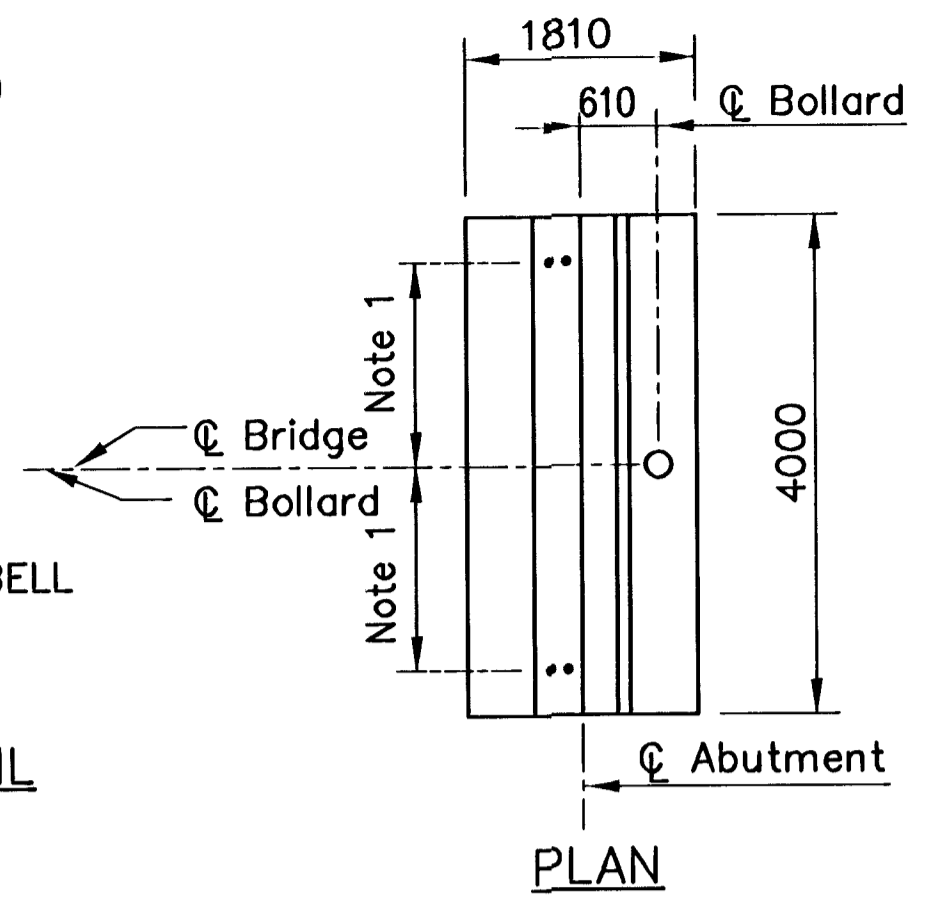


SCALE 1:100

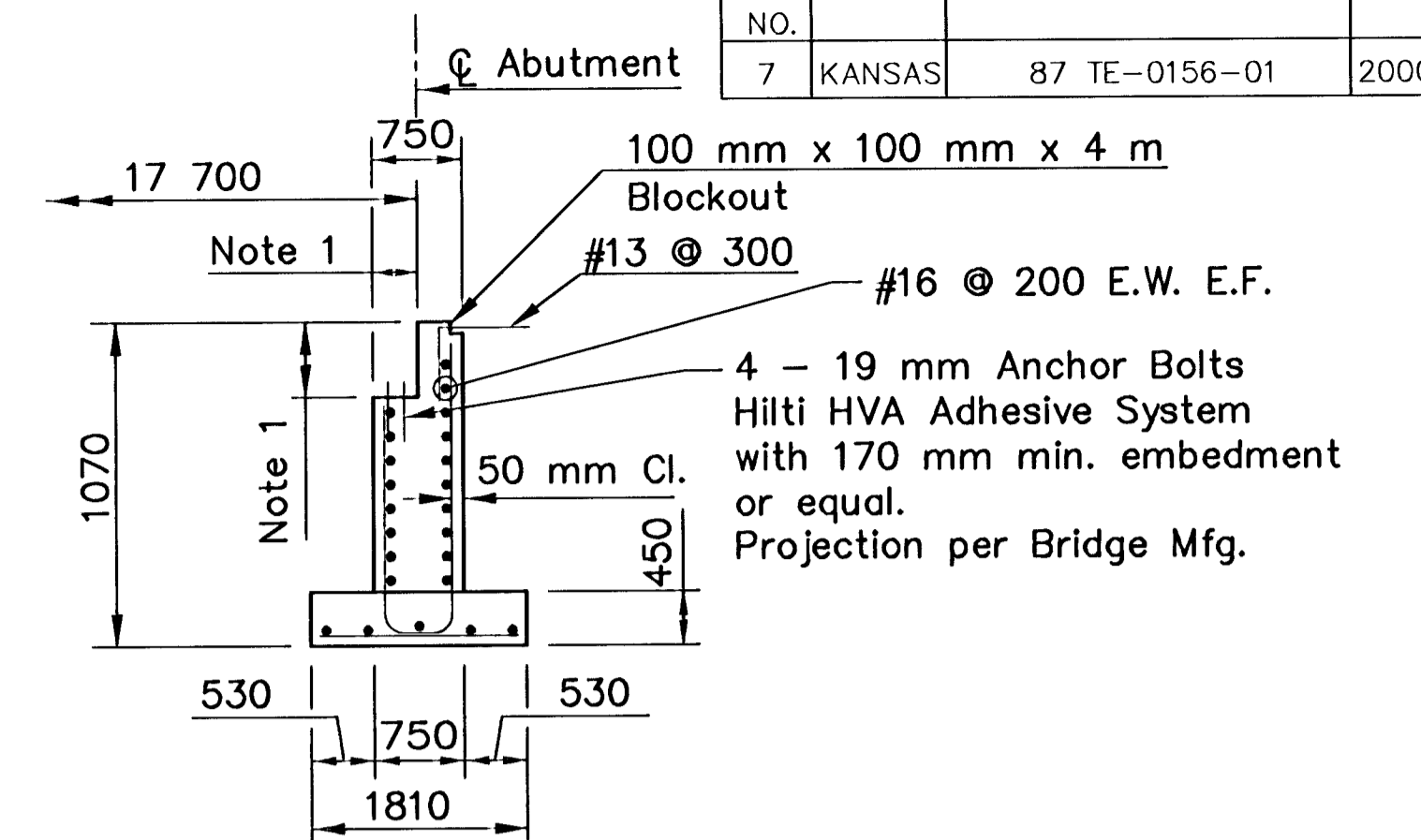
LEGEND

- [Hatched Box] Sidewalk Removal
- [Hatched Box] Replace in kind

- Control Point #1
 @ Sta. 0+525.179, 11.82 m Lt.
 1. MKEC Iron pin on W. side Estelle & N. side canal
 2. S. face of sidewalk, S. of 407 Estelle 0.21 m N
 3. S.W. corner curb of "L" shape court 3.49 m NNW
 4. X 6084.182, Y 6316.379
- Control Point #2
 @ Sta. 0+505.273, 105.52 m Lt.
 1. Square cut CL Green & N. side of sidewalk
 2. CL Green & S. side of 3rd St. Canal
 3. N. face of sidewalk 0.061 m N
 4. X 5990.475, Y 6296.467

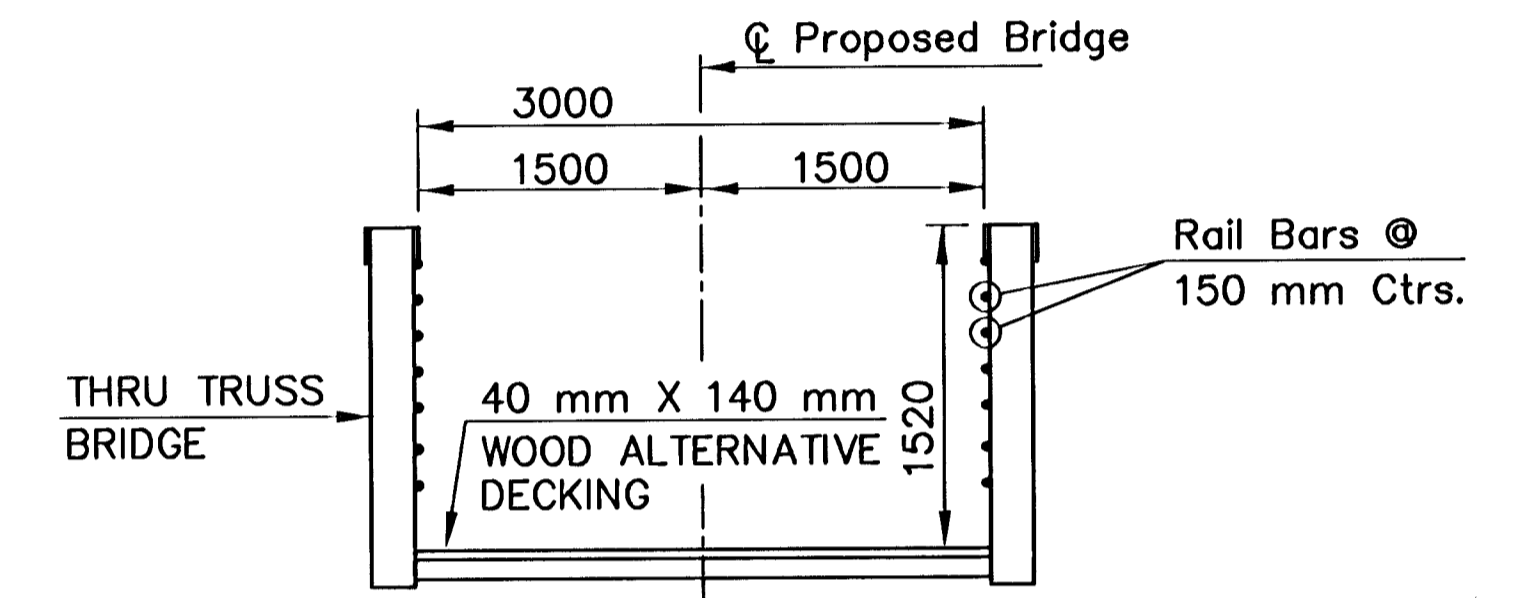


PLAN



ABUTMENT DETAILS SECTION

NOTE 1: Dimensions per Bridge manufacturer.



TYPICAL BRIDGE SECTION

The steel bridge shall be designed for a live load of 4.1 kPa and an additional dead load of 2.4 kPa. Design drawings and calculations shall be prepared by an engineer licensed in the State of Kansas. These shall be submitted to the Engineer for approval prior to fabrication.

The bridge shall have a minimum fundamental frequency of 3 Hz. The bridge shall be cambered 1 1/2% (min.) of the total span length. Main members of the bridge truss shall be fabricated of structural tubing or rolled section. All structural members shall be fabricated from unpainted weathering steel. A 2 m minimum clearance from channel to bottom steel shall be maintained.

The railing shall have a maximum opening of 150 mm. The deck material shall consist of 40 mm x 140 mm planking. The decking shall be a wood alternative material with an allowable uniform live load capacity of 9.6 kPa and a tensile yield strength of 43.7 MPa. Maximum profile grade on bridge deck shall be 8.33%.

The pedestrian bridge is available through BIG R, Greeley, Colorado, 1-800-234-0734, or CONTINENTAL BRIDGE, Alexandria, Minnesota, 1-800-328-2047, or STEADFAST BRIDGES, Fort Payne, Alabama, 1-800-749-7515, or approved equal.

The wood alternative decking material is available through: Materials International, Atlanta Georgia, 1-800-256-8857, Trex, Winchester, VA., 1-800-289-8739; Vinyl Solutions, Inc., North Canton, Ohio, 1-800-417-4114, or approved equal. Verify deck color selection with Gene Rath (City of Wichita) 316-268-4288.

NO.	DATE	REVISIONS	BY	APP'D
2				
1				

KANSAS DEPARTMENT OF TRANSPORTATION

PEDESTRIAN BRIDGE AT ESTELLE AVENUE

87 TE-0156-01 SEDGWICK COUNTY

MKEC ENGINEERING CONSULTANTS, INC.
 WICHITA, KANSAS

DESIGNED BY: PAF CHECKED BY: MDK
 DRAWN BY: DPG DATE: JULY 2000 SHEET 4 OF 6