

GENERAL NOTES

- ALL CONCRETE SHALL BE STANDARD PAVING MIX--UNLESS OTHERWISE NOTED.
- THE CONTRACTOR SHALL BE RESPONSIBLE FOR PRESERVING EXISTING BOUNDARY MONUMENTS. THE CONTRACTOR SHALL BE REQUIRED TO RE-ESTABLISH ANY PROPERTY IRONS WHICH ARE DAMAGED OR DESTROYED BY HIS CONSTRUCTION OPERATIONS. SUCH IRONS SHALL BE RE-ESTABLISHED BY A LICENSED LAND SURVEYOR IN ACCORDANCE WITH STATE LAWS.
- EXISTING UTILITIES AND THEIR LOCATIONS AS SHOWN ON THE PLANS, REPRESENT THE BEST INFORMATION OBTAINABLE FOR DESIGN. LOCATION INFORMATION HAS BEEN OBTAINED FROM THE VARIOUS COMPANIES AND IS EITHER FROM COMPANY UTILITY DRAWINGS OR COMPANY PROVIDED FIELD LOCATIONS. THE PLAN LOCATIONS SHOWN ARE NOT GUARANTEED. ADDITIONAL EXISTING UTILITIES MAY ALSO BE ENCOUNTERED. CONTRACTOR SHALL EXPOSE ALL UTILITIES AT POSSIBLE POINTS OF CONFLICT PRIOR TO ANY CONSTRUCTION.
- CONTRACTOR WILL BE REQUIRED TO PROVIDE A MINIMUM ADVANCE NOTICE OF FORTY-EIGHT (48) HOURS TO UTILITY COMPANIES PRIOR TO STARTING ANY EXCAVATION AS FOLLOWS:

KANSAS ONE-CALL	1-800-344-7233
-----------------	----------------

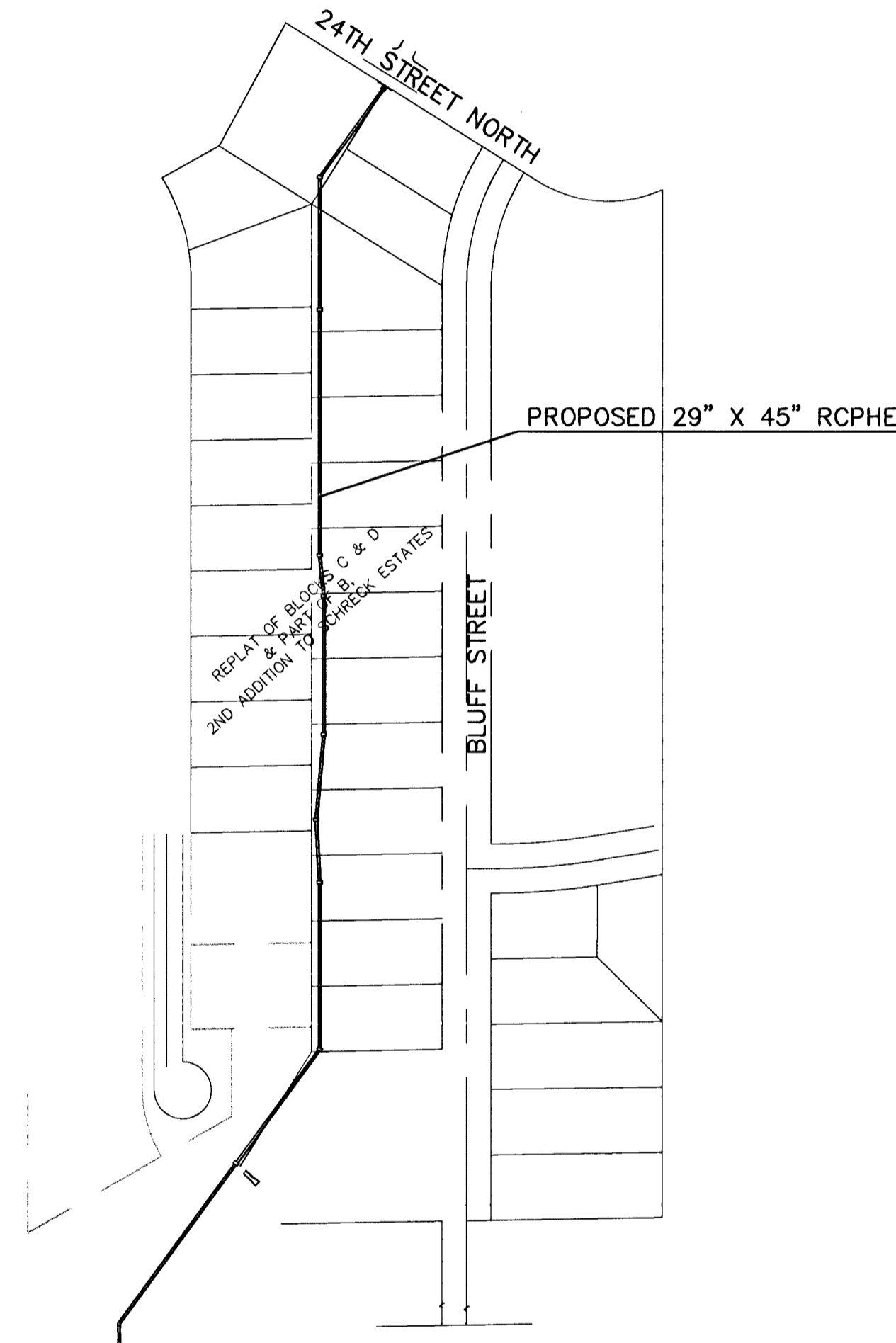
THE CONTRACTOR MUST NOTIFY THE FOLLOWING IN CASE OF AN EMERGENCY:

CABLEVISION	316-263-2061
KANSAS GAS & ELECTRIC	316-264-1141
SOUTHWEST BELL TELEPHONE COMPANY	316-571-2611
CITY OF WICHITA WATER DEPARTMENT	316-268-4908
CITY OF WICHITA SEWER MAINTENANCE	316-268-4071
- UNLESS SHOWN OR STATED OTHERWISE ON THESE DRAWINGS, MATERIALS AND CONSTRUCTION SHALL BE IN ACCORDANCE WITH CITY OF WICHITA SPECIFICATIONS.
- RUBBLE FROM THE REMOVAL OF MISCELLANEOUS STRUCTURES AND EXCESS EXCAVATION WHICH IS TO BE WASTED SHALL BE DISPOSED OF OFFSITE BY THE CONTRACTOR. THESE SITES SHALL BE APPROVED BY THE ENGINEER AS TO SUITABILITY, APPEARANCE AND SITE LOCATION. LOCATIONS THAT, IN THE OPINION OF THE ENGINEER, WILL LEAVE AN UNSIGHTLY APPEARANCE WILL NOT BE APPROVED. ALL DISPOSAL SITES MUST BE APPROVED BY THE KANSAS DEPARTMENT OF HEALTH AND ENVIRONMENT. MATERIAL EITHER STOCKPILED OR DISPOSED OF IN A FLOOD PLAIN WOULD REQUIRE A KANSAS STATE BOARD OF AGRICULTURE PERMIT. ANY MATERIAL DUMPED IN WATERS OF THE UNITED STATES OR WETLANDS IS SUBJECT TO U.S. CORPS OF ENGINEERS PERMITTING REGULATIONS. ANY MATERIAL BURIED OR STOCKPILED BEYOND APPROVED CONSTRUCTION LIMITS WOULD REQUIRE ADDITIONAL ARCHAEOLOGICAL INVESTIGATIONS UNLESS BURIED IN A PREVIOUSLY APPROVED BORROW LOCATION.
- ANY REQUIRED CONTRACTOR FURNISHED BORROW MUST BE APPROVED BY THE CITY OF WICHITA CONSTRUCTION DEPARTMENT.
- ~~SITE RESTORATION AND PREPARATION SHALL BE SUBSIDIARY TO THE PROJECT IN ACCORDANCE WITH CITY OF WICHITA STANDARD SPECIFICATIONS.~~
- COST OF EXCAVATION, HAULING AND DUMPING OF EXCESS EXCAVATION SHALL BE SUBSIDIARY TO THE PROJECT.
- ALL UNPAVED AREAS DISTURBED BY CONSTRUCTION SHALL BE GRADED BACK TO ORIGINAL GROUND LINE, PROVIDED WITH TOPSOIL, SEEDED AND MULCHED.
- TREES AND SHRUBS IN PUBLIC RIGHT-OF-WAY AND/OR DRAINAGE AND UTILITY EASEMENTS WHICH ARE IN DIRECT CONFLICT WITH PROPOSED NEW CONSTRUCTION SHALL BE REMOVED BY THE CONTRACTOR WITH THE ENGINEER'S APPROVAL. TREES AND SHRUBS WHICH ARE NOT IN DIRECT CONFLICT WITH PROPOSED NEW CONSTRUCTION SHALL BE SAVED AND PROTECTED FROM DAMAGE.
- ALL WATER MAINS AND APPURTENANCES SHALL BE INSTALLED IN ACCORDANCE WITH THE CITY OF WICHITA, KANSAS STANDARD SPECIFICATIONS FOR WATER MAIN INSTALLATION NO. 145.33.
- CONTRACTOR MUST NOTIFY ALL ADJACENT PROPERTY OWNERS/TENANTS 10 DAYS PRIOR TO BEGINNING CONSTRUCTION.

NEIGHBORHOOD "HOTSPOT" DRAINAGE IMPROVEMENTS

21ST & BLUFF STREETS

CITY OF WICHITA, KANSAS
 SEDGWICK COUNTY, KANSAS
 MICHAEL E. LINDEBAK, P.E., CITY ENGINEER
 INDEX CODE: 600290



*BOOKED
 4-30-01
 MEG
 D-509*

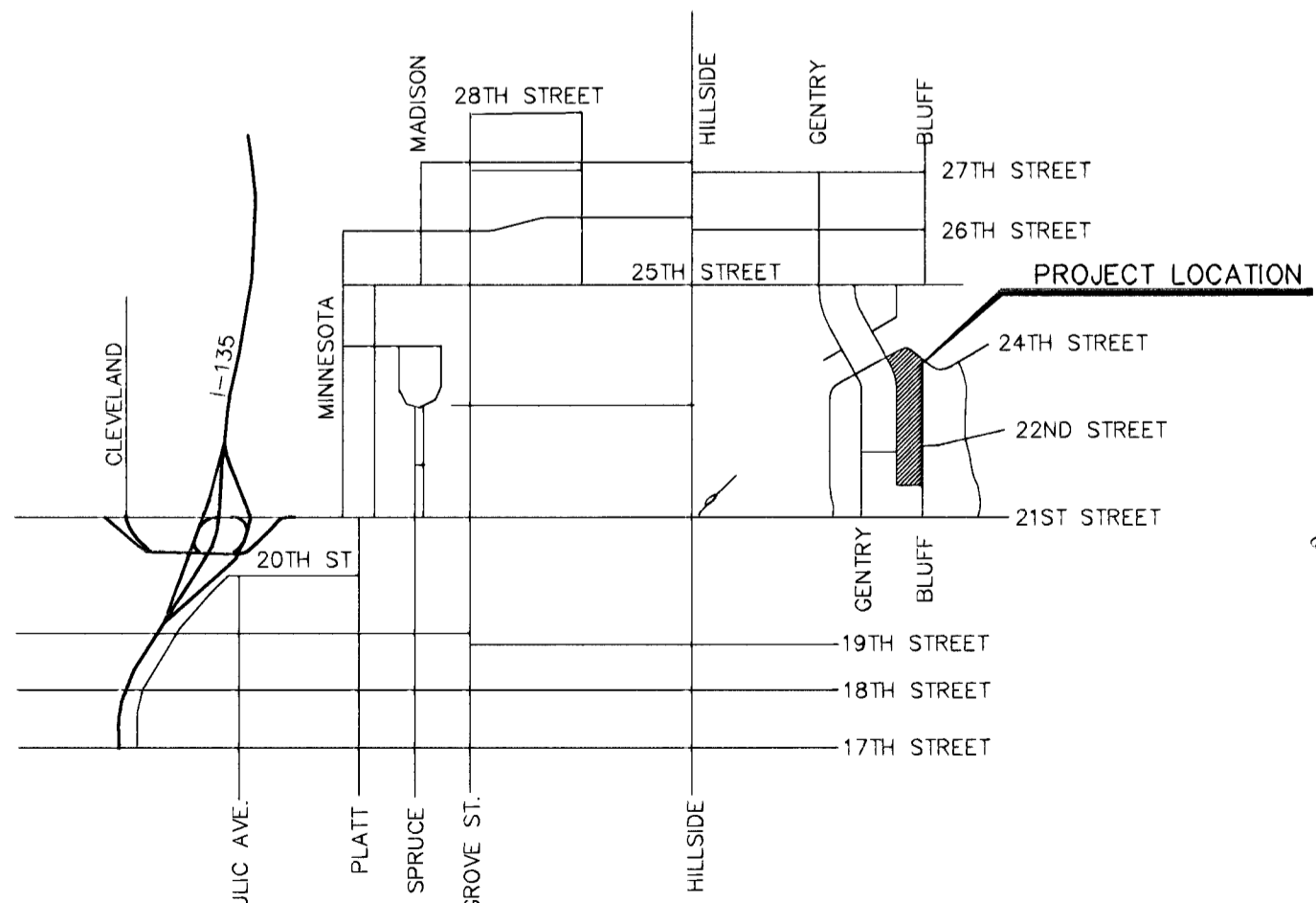
INDEX TO SHEETS:

- TITLE SHEET
- PLAN AND PROFILE
- PLAN AND PROFILE
- PLAN AND PROFILE
- CROSS-SECTIONS
- CROSS-SECTIONS
- C.O.W. DROP INLET DETAILS
- C.O.W. STANDARD SHALLOW MANHOLE DETAIL

BENCHMARKS

BENCHMARK BLUFF & 21ST. ST. NORTH: C.O.W. BENCHMARK. NW COR. INTERSECTION. 2.2' S. OF SOUTH FACE WALK. 2.0' E. OF EAST FACE WALK. 39.4' WEST OF CTR LINE BLUFF NORTH. 18' WEST OF CTR LINE BLUFF SOUTH. 44' NORTH OF CTR LINE 21ST ST. 11.4' NW OF STREET LIGHT POLE. C.O.W. ELEV=201.08 U.S.G.S. ELEV=1388.48

BENCHMARK AND 21ST. ST. NORTH: TEMPORARY BENCHMARK. NW COR. INTERSECTION. R.R. SPIKE S-FACE STREET LIGHT POLE. C.O.W. ELV=200.98 U.S.G.S. ELEV=1388.38



VICINITY MAP
 NOT TO SCALE

STORM SEWER DRAINAGE LOCATION MAP
 NO SCALE



1	9-19-96	REVISED PER C.O.W. COMMENTS	JT
NO.	DATE	REVISION	BY
TITLE SHEET			
P.O. BOX 1304 2319 NORTH JACKSON JUNCTION CITY, KANSAS (913)762-5040 FAX 913-762-7744		KAW VALLEY ENGINEERING, INC 122 N.W. PARKWAY RIVERSIDE, MISSOURI 64150 (816)587-5033 9571 ALDEN ROAD LENEXA, KANSAS 66215 (913)894-5150	
PROJ. NO. 96-1801 DATE SEPT 9, 1996 DESIGNER SDM DRAWN BY JT CHECKED BY CFN SHEET 1 OF 8			