

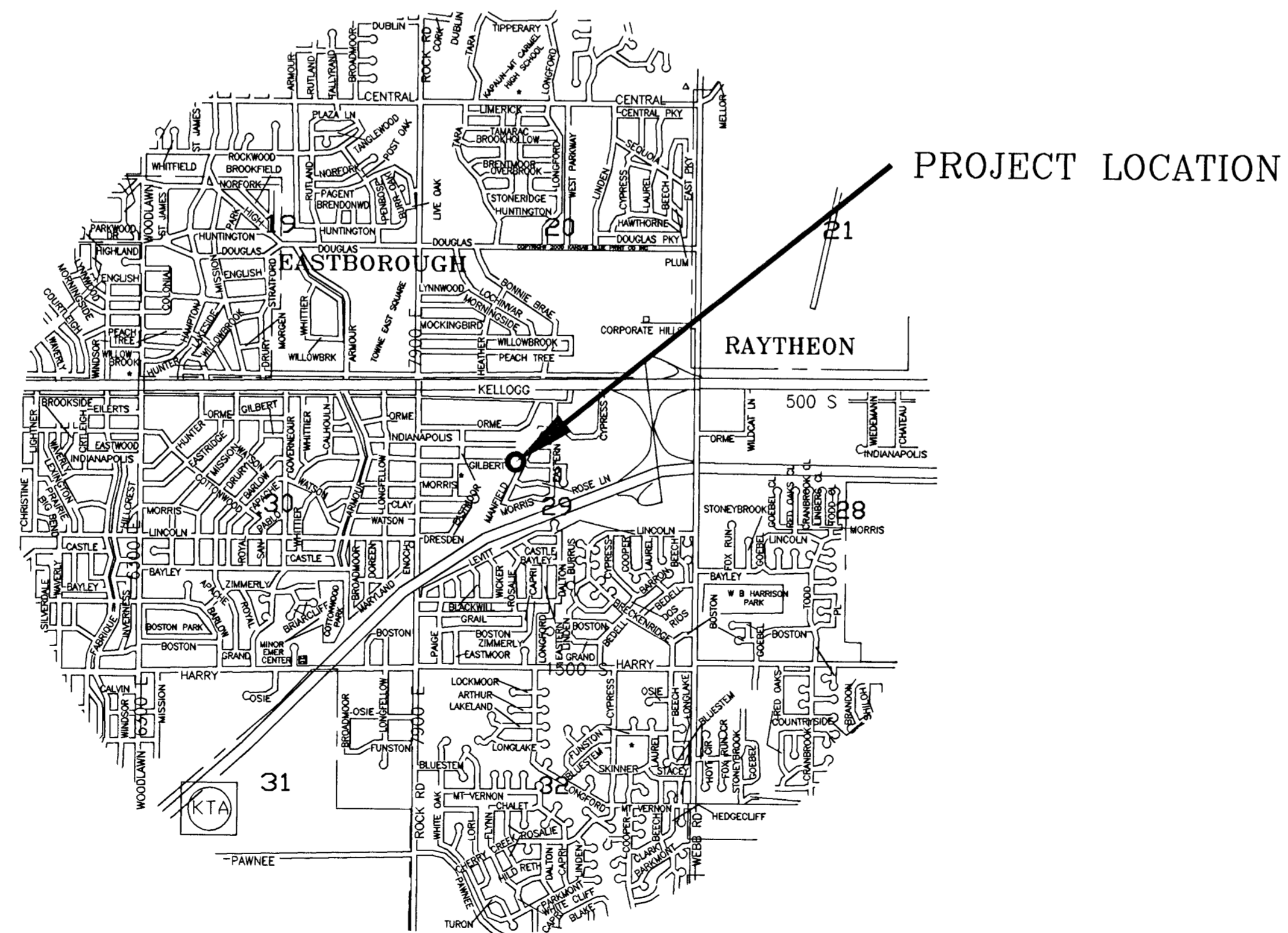
2000 CONTRACT MAINTINANCE PEDISTRIAN BRIDGE REPLACEMENT

115 FT. PEDISTRIAN BRIDGE AT GILBERT AND MANSFIELD OVER GYPSUM CREEK

OCA NO. 132650

CITY OF WICHITA, KANSAS

M. E. LINDEBAK - CITY ENGINEER

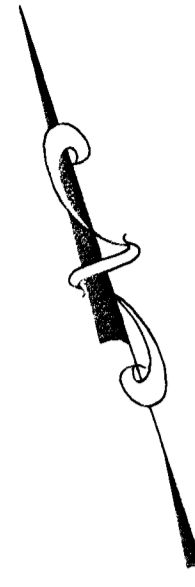


LOCATION MAP

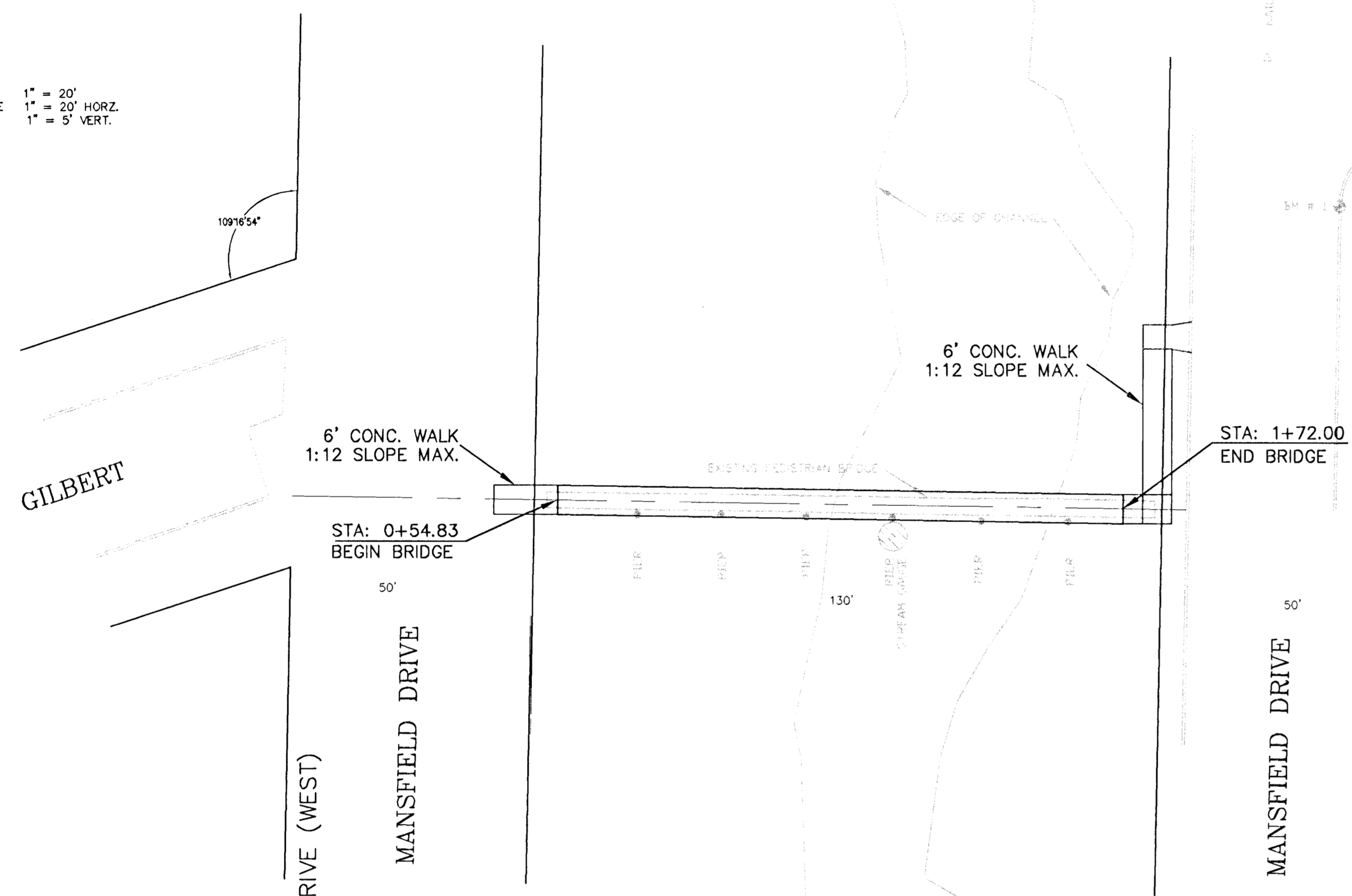
INDEX:

- SHEET 1 TITLE SHEET
- SHEET 2 115 FT. PEDISTRIAN BRIDGE AT GILBERT AND MANSFIELD



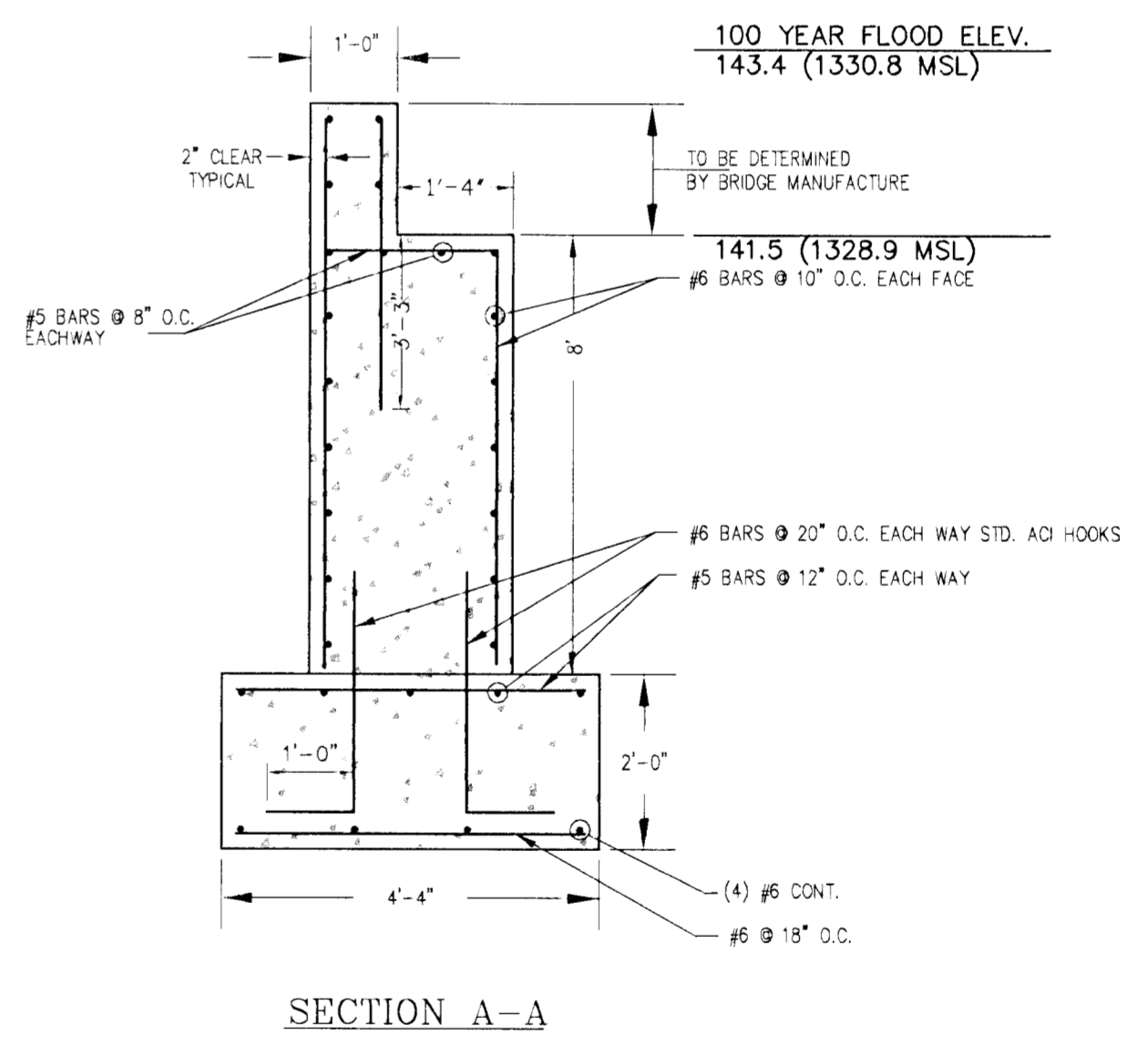
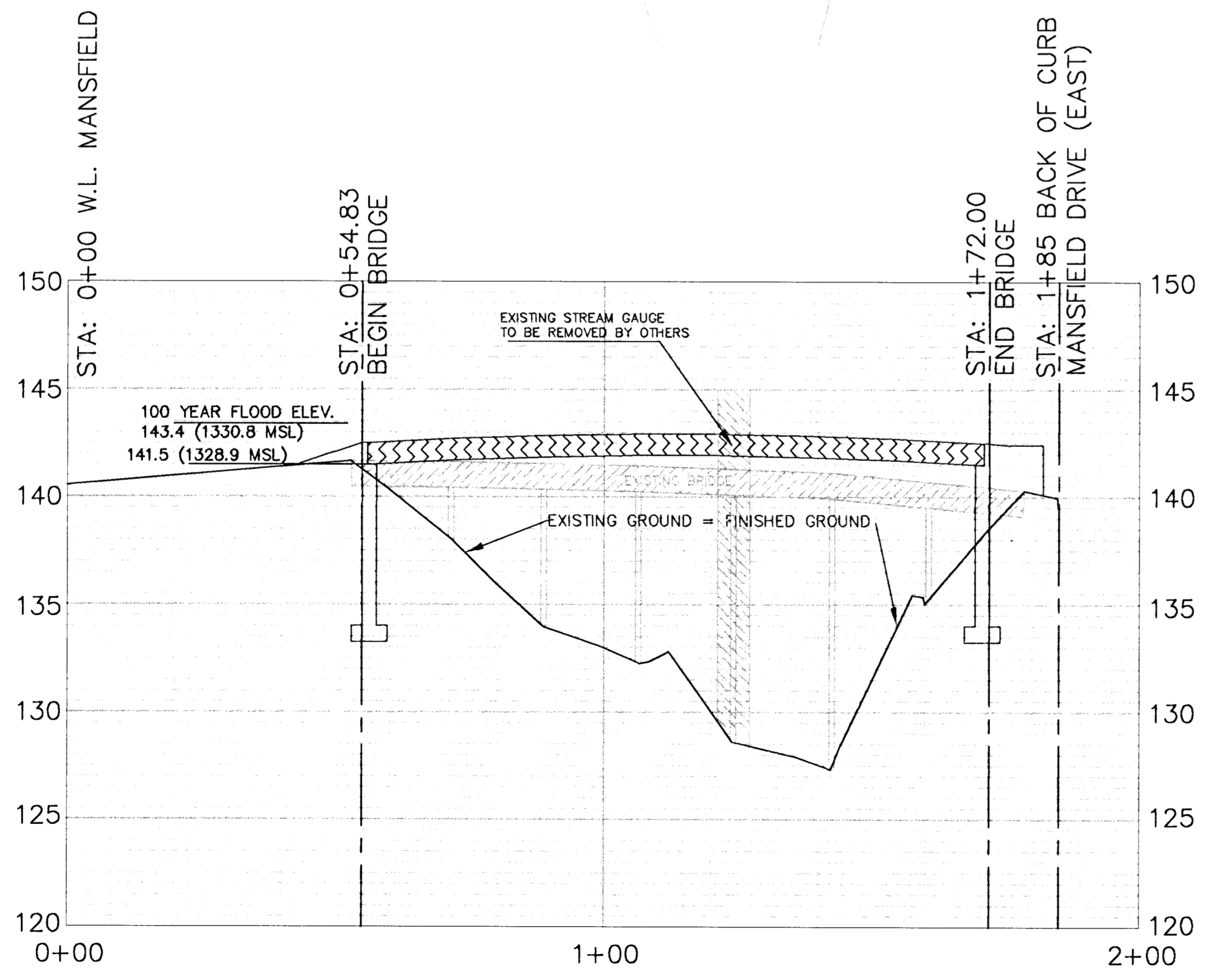
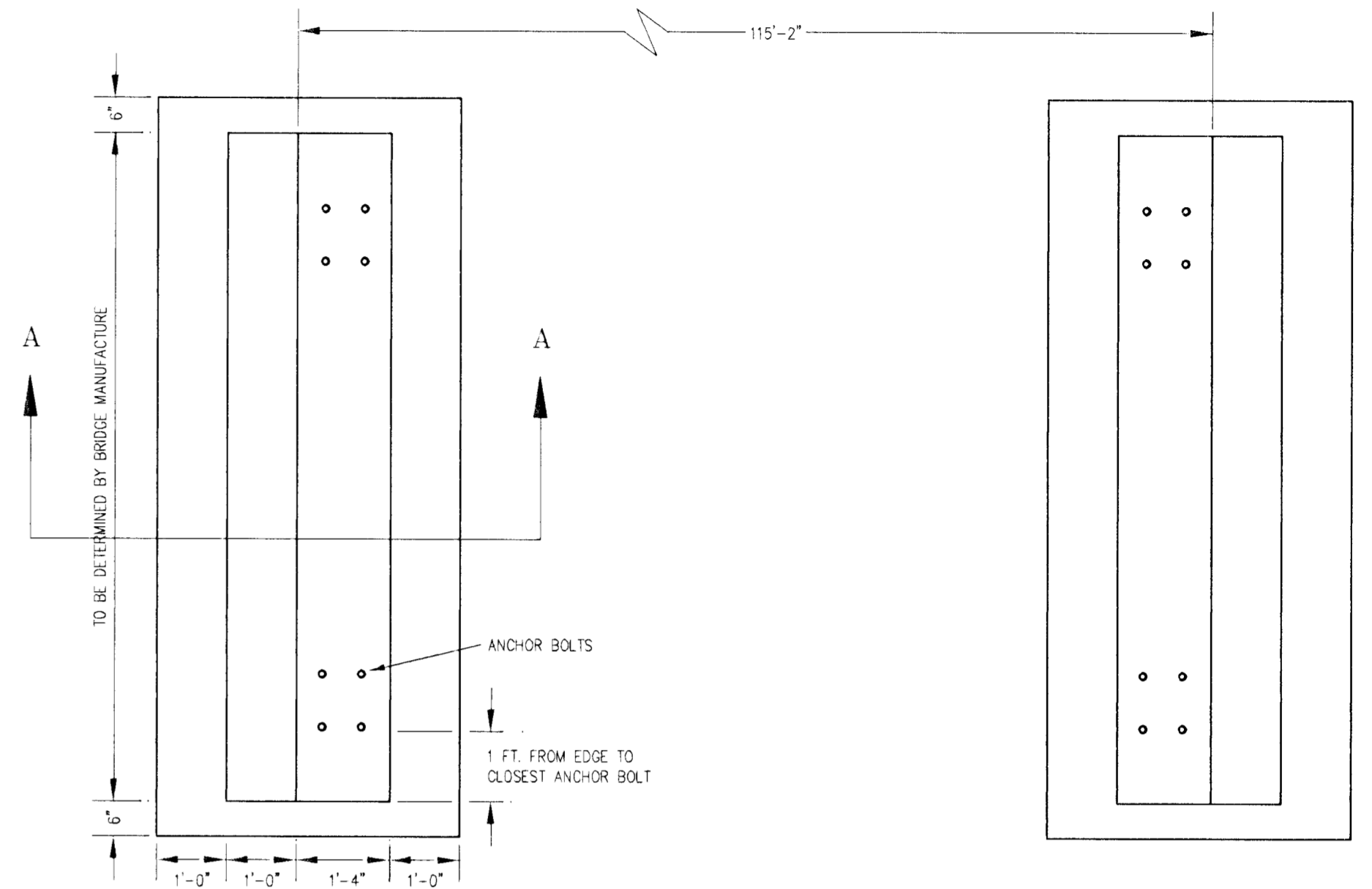


SCALE PLAN 1" = 20'
 PROFILE 1" = 20' HORZ.
 1" = 5' VERT.



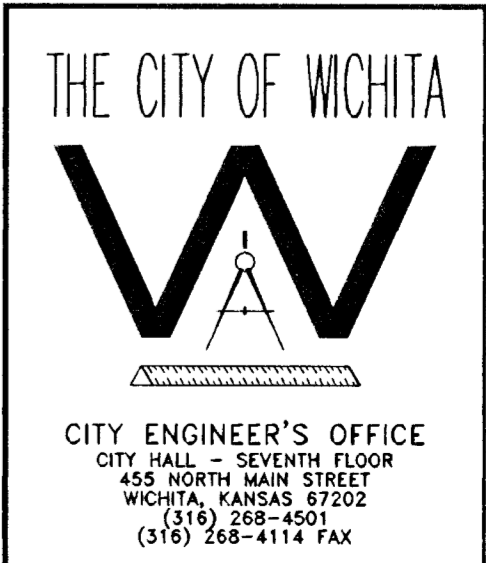
BM # 1
 PAINTED SQUARE ON TOP OF CURB AT SOUTH END
 OF RETURN ON SOUTHEAST CORNER MANSFIELD AND GILBERT
 ELEV. 140.10 (1327.50 MSL)

CONCRETE ABUTMENT PLAN



STRUCTURAL GENERAL NOTES:

1. The maximum total load soil bearing pressure does not exceed 2,000 psf. for wall and pad footings. Footings shall bear on undisturbed soil. If poor or unusual soil conditions are encountered, coordinate adjustments with the engineer.
2. All concrete shall be City of Wichita Standard 6.6 sack per cubic yard rock mix and have minimum compressive strength of 4,000 psi @ 28 days.
3. No aluminum or metallic conduit shall be imbedded in any concrete.
4. All reinforcing steel shall meet ASTM A516 - Grade 60 minimum.
5. Concrete protection for reinforcement shall be 2" clear formed exposed surfaces and 3" clear for footings (typical unless otherwise noted).
6. Reinforcement shall be continuous and lapped three bar diameters (2' min.) except as noted and provide corner bars of same size and spacing.
7. Temporary bracing and shoring against wind and erection conditions shall be the responsibility of the Contractor.
8. Contractor to verify all dimensions and elevations with drawings and existing conditions.
9. Bridge shall be anchored to abutments using a minimum of 8 - 1" diameter ASTM A36 or A307 (min. grade) galvanized all-thread bolts at each abutment. Holes shall be drilled 1 1/8" diameter (max.) 12" depth (min.) into abutments and anchored with epoxy cement. The anchor bolts shall protrude from the abutment so that double nuts can be installed and locked together.
10. Contractor shall place 3/4" chamfer on all exposed edges of concrete/abutment above grade.



115 ft. PEDISTRIAN BRIDGE
 AT GILBERT AND MANSFIELD
 OVER GYPSUM CREEK

M. E. LINDEBAK P.E. - CITY ENGINEER
 ENGINEER: S. BREITENBACH DRAWN BY: R. LOOMIS
 PROJECT NUMBER: - O.C.A. NO. 132650
 DATE: MAY 2000 SHEET 2 OF 2