

GENERAL NOTES:

- NAD83 STCS, KANSAS SOUTH ZONE
NAVD88 VERTICAL DATUM
- Contractor will be required to provide a minimum advance notice of seventy-two (72) hours to utility companies prior to starting any excavation as follows:

Kansas One-Call 1-800-344-7233

The Contractor must notify the following in case of an emergency:

Southern Star Pipeline 529-6603
Cox Communications 262-4270 or 263-2061

Westar Energy 261-6824
Kansas Gas Service 832-3121
Aquila Networks 941-1608
AT&T 268-2102
City of Wichita Water Department 268-4908
City of Wichita Sewer Maintenance 268-4071
- Existing utility lines and their location, as shown on the plans, represent the best information obtainable for design. Location information has been obtained from the various companies and is either from company utility drawings or company provided field locations. The plan locations shown are not guaranteed. Additional existing utilities may also be encountered. The contractor will be required to work around existing utilities within the right-of-way which do not conflict with proposed construction.
- Rubble from the removal of miscellaneous structures and excess excavation which is to be wasted shall be disposed of on sites to be provided by the Contractor. These sites shall be approved by the Engineer as to suitability, appearance and site location. Locations that, in the opinion of the Engineer, will leave an unsightly appearance will not be approved.

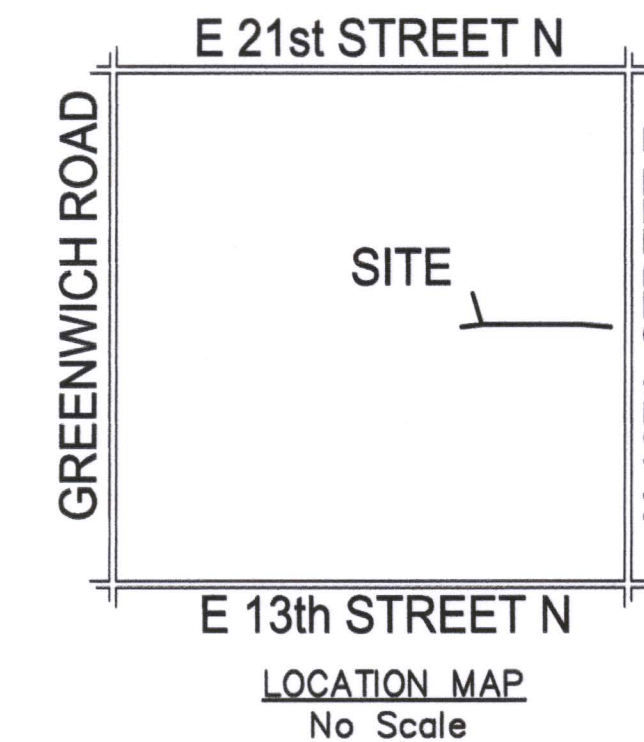
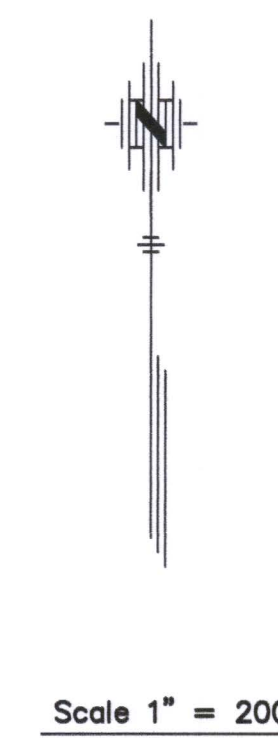
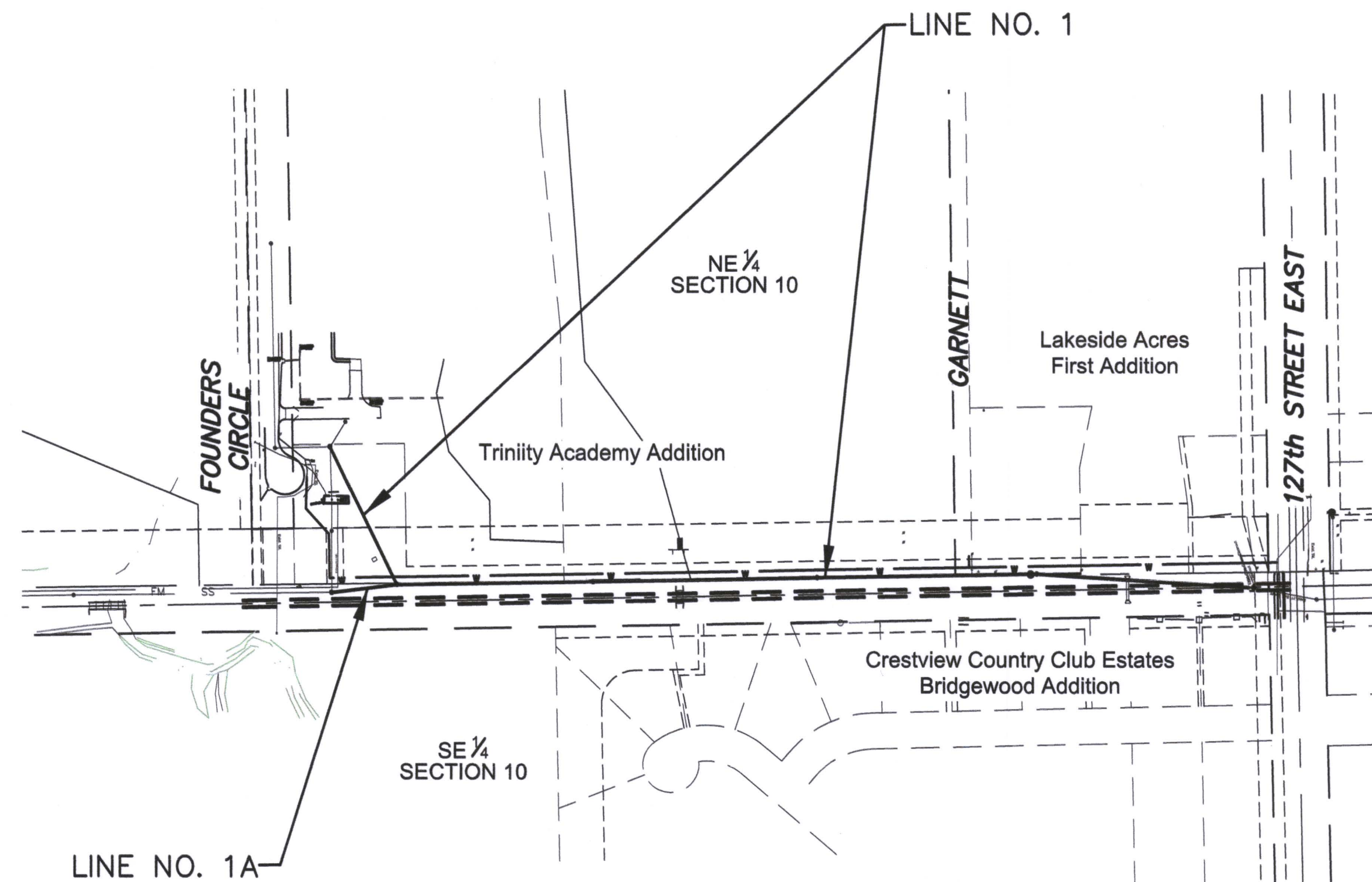
All disposal sites must be approved by the Kansas Department of Health and Environment. Material either stockpiled or disposed of in a flood plain would require a Kansas State Board of Agriculture permit. Any material dumped in waters of the United States or wetlands is subject to U.S. Corps. of Engineers permitting regulations. Any material buried or stockpiled beyond approved construction limits would require additional archaeological investigations unless buried in a previously approved borrow location.
- The Contractor shall be responsible for maintaining continuous flow of sewage through construction. Contractor's proposed method for maintaining sewage flow shall be approved by the Engineer. Cost of maintaining flow of sewage through construction will not be paid for directly and this cost shall be considered as subsidiary to the other pay items of the work.
- The Contractor shall be responsible for preserving property irons. The Contractor will be required to re-establish any property irons which are damaged or destroyed by his construction operations. Such irons shall be re-established by a licensed land surveyor in accordance with state laws.
- Trees and shrubs in public right-of-way which are in direct conflict with proposed new construction shall be removed by the Contractor with the Engineer's approval. Trees and shrubs which are not in direct conflict with the proposed new construction shall be saved and protected from damage. PROTECT trees on the south side of the existing railroad ballast.
- Contractor shall vacuum test all manholes according to the City of Wichita standard specifications.
- The tops of all Manholes to be set 0.4 feet above existing ground unless otherwise noted.
- All areas disturbed by sewer construction, i.e. R/W, easements, and adjacent properties shall be restored with the same grass seed as per AR 6.5.
- In street right of way (not under street) and under parking lots, contractor shall backfill trench with sand and flush per City of Wichita specifications. Under pavement within the street right of way, contractor shall backfill trench with flowable fill per City of Wichita specifications. NO flowable fill on this project.
- Traffic control as necessary shall be per the latest addition of the MUTCD.
- Depth & location of all existing utilities shown must be field verified. Contractor to verify all information prior to construction.
- Existing flowline information obtained from city field records & field survey.
- Contractor to Field Verify location and depth of All Utilities prior to construction and report findings to Project Engineer.

CONSTRUCTION PLANS FOR
SANITARY SEWER EXTENSIONS
TO
THE CITY OF WICHITA, KANSAS
LATERAL 13, MAIN 14, FOUR MILE CREEK SEWER
GARY JANZEN, P.E. - CITY ENGINEER

CITY OF WICHITA PROJECT NO. 468-85371
OCA NO. 628130

INDEX

TITLE SHEET	SHEET 1
LINE NO. 1	SHEET 2-3
LINE NO. 1 & 1A	SHEET 4
PHASING AND ABANDONMENT PLAN	SHEET 5-6
SANITARY SEWER DETAILS	SHEET 7-8
EROSION CONTROL DETAILS	SHEET 9-13
SWPPP/COORDINATE POINTS LIST	SHEET 14
FINAL PLAT	SHEET 15-16



Dondlinger - Contractor
G. Baalman - City of Wichita, Field Project Engineer
M. Thom - City of Wichita, Inspector
As-built
Release Date: N.A.
pdf: 5/7/2021 apr

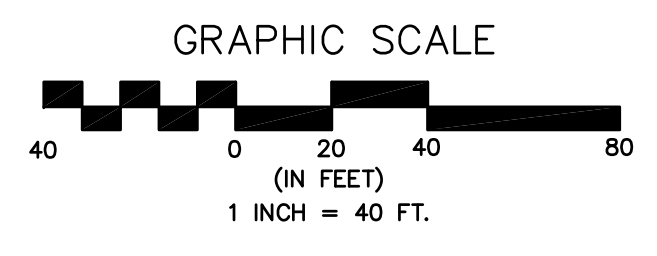
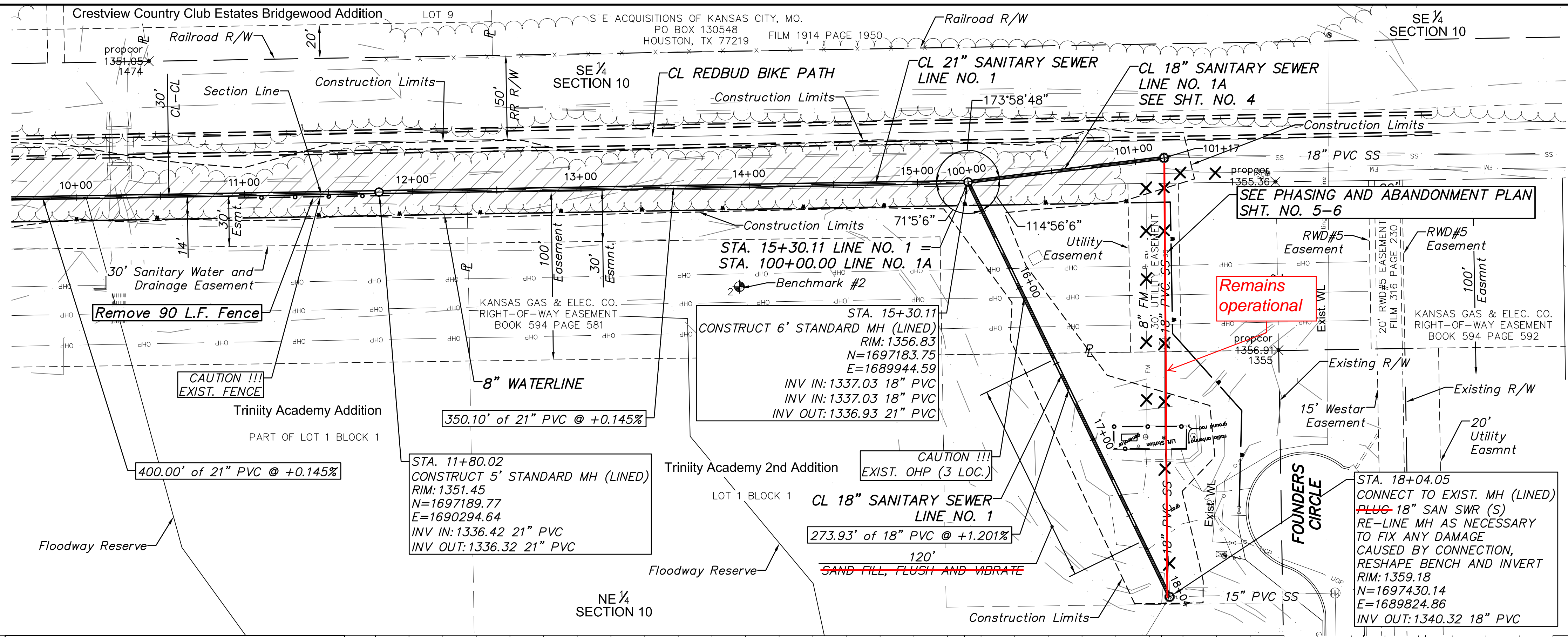
BENCH MARKS

Benchmark #2
RR Spike in South face of HLP @ 1st set of poles E. of Founders Cir. (approx. 350'), 75' N. of CL Redbud Path.
Elev. 1357.68 NAVD88 VERTICAL DATUM

DECEMBER 2018
PLANS PREPARED
BY
POE & ASSOCIATES, INC.
CONSULTING ENGINEERS
544 W. Douglas ■ Wichita, KS 67203
Phone 316/685-4114 ■ FAX 316/685-4444

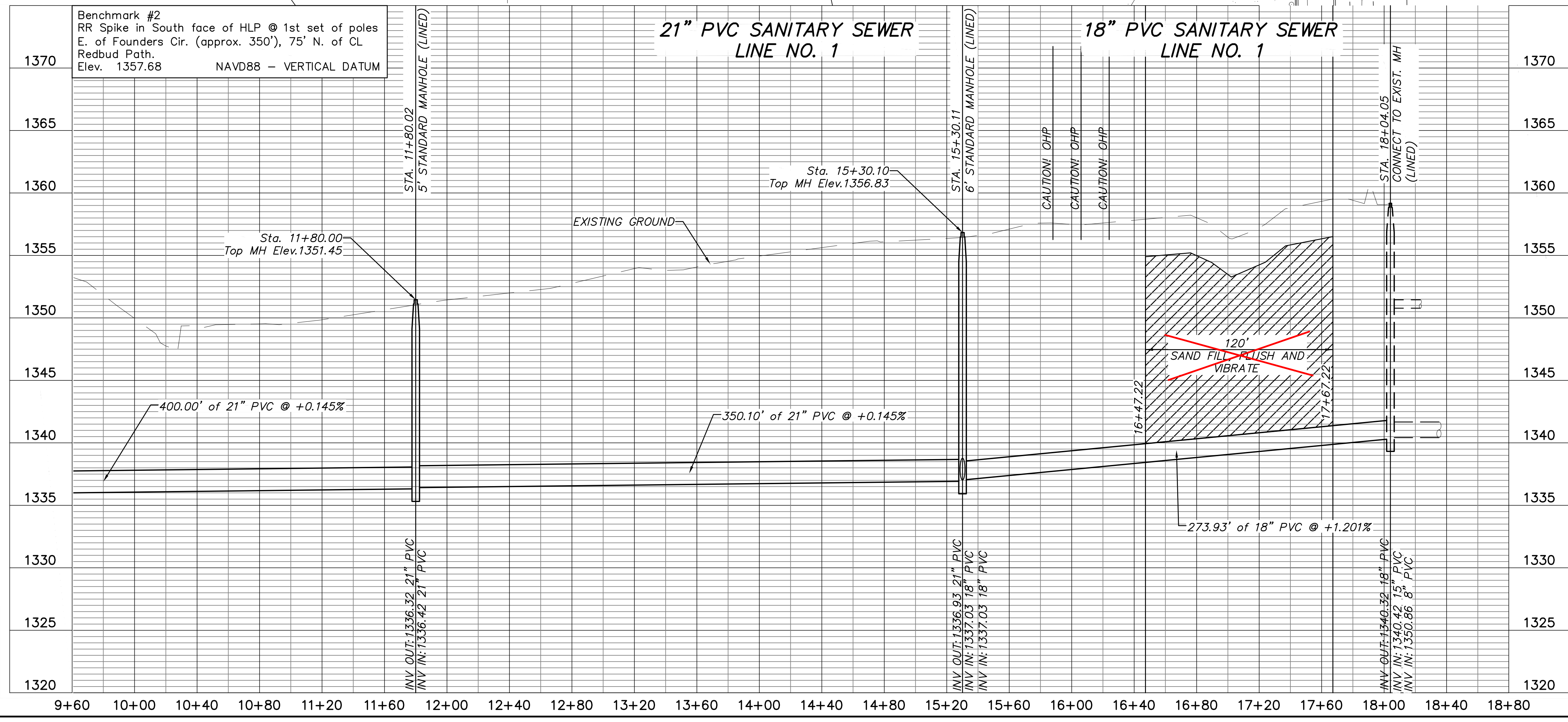


No.	Date	By	Approved	Revision



Installed plug to new 18" Sanitary Sewer pipe.

TREE REMOVAL

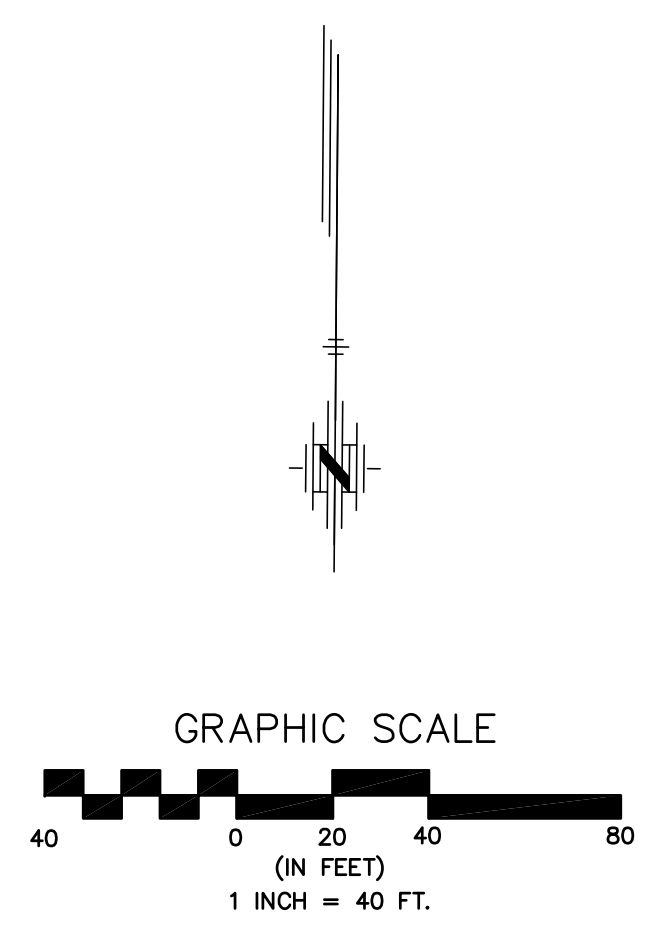
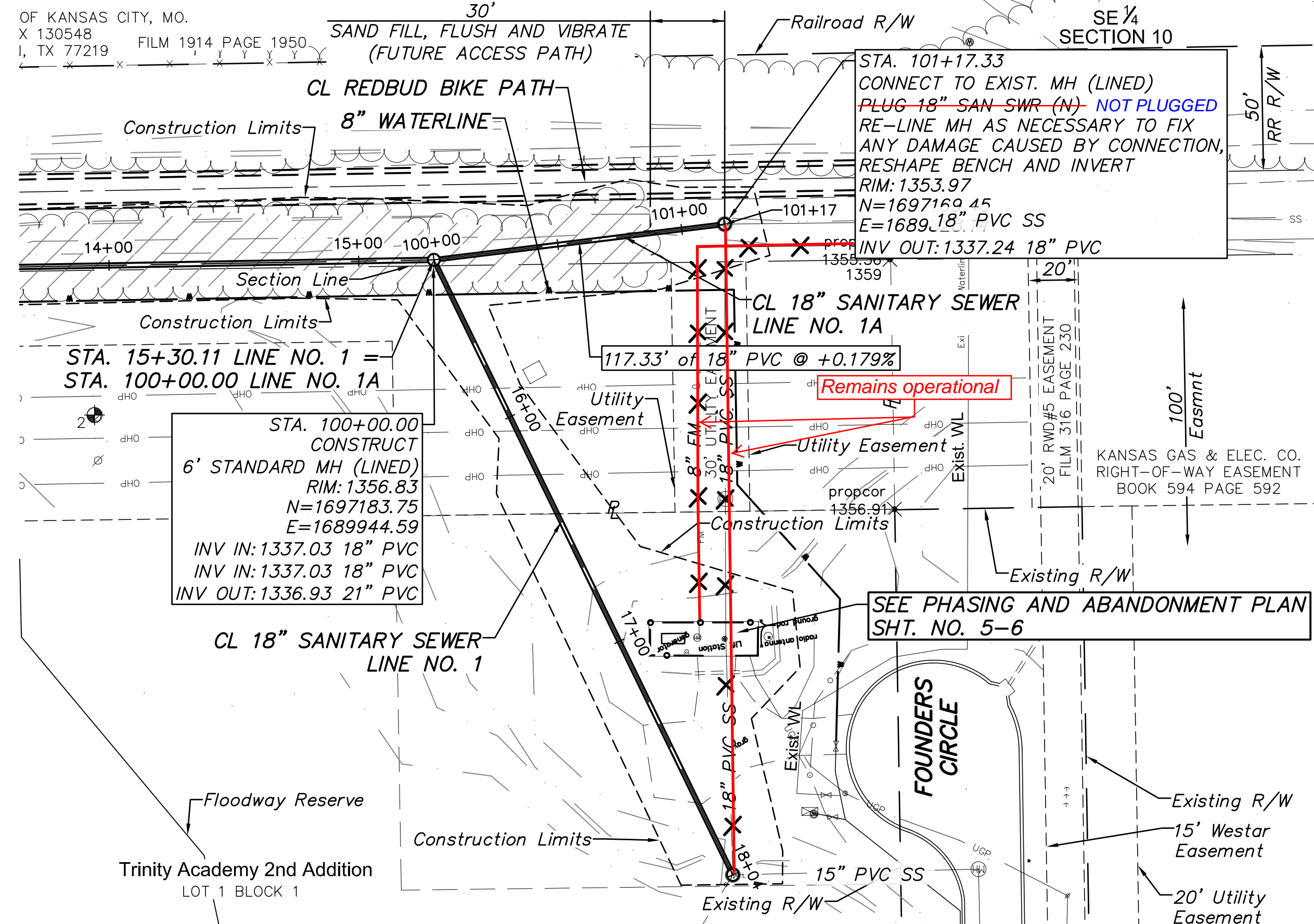


Benchmark #2
RR Spike in South face of HLP @ 1st set of poles
E. of Founders Cir. (approx. 350'), 75' N. of CL
Redbud Path.
Elev. 1357.68 NAVD88 - VERTICAL DATUM

21" PVC SANITARY SEWER
LINE NO. 1

18" PVC SANITARY SEWER
LINE NO. 1

Engineer: R. GROTTIE	By	Approval	Revision
Designer: J. UNRUH	By	Approval	Revision
Job No: 102127	Date	10/21/27	DECEMBER 2018
<p>POE & ASSOCIATES, INC. CONSULTING ENGINEERS 544 W. Douglas Wichita, KS 67203 Phone 316/685-4114 FAX 316/685-4444</p>			
<p>REDBUD BIKE PATH SANITARY SEWER EXTENSION 21" MAIN</p>			
<p>CITY OF WICHITA, KANSAS GARY JANZEN, P.E. - CITY ENGINEER C.O.W. Project #468-85371 O.C.A. #28130</p>			



/// TREE REMOVAL

18" PVC SANITARY SEWER LINE NO. 1A		
1370		1370
1365		1365
1360		1360
1355		1355
1350		1350
1345		1345
1340		1340
1335		1335
1330		1330
1325		1325
1320		1320

99+60 100+00 100+40 100+80 101+20 101+60 102+00

STA. 100+00.00 6" STANDARD MANHOLE (LINED)

EXISTING GROUND

STA. 101+17.33 CONNECT TO EXIST. MH (LINED)

30' SAND FILL, FLUSH AND VIBRATE (FUTURE ACCESS PATH)

100+87.33

117.33' of 18" PVC @ +0.179%

INV OUT: 1336.93 21" PVC
INV IN: 1337.03 18" PVC
INV IN: 1337.03 18" PVC

INV OUT: 1337.24 18" PVC
INV IN: 1337.34 18" PVC
PLUG 18" SAN SWR (N)

REDBUD BIKE PATH
SANITARY SEWER EXTENSION
21" MAIN

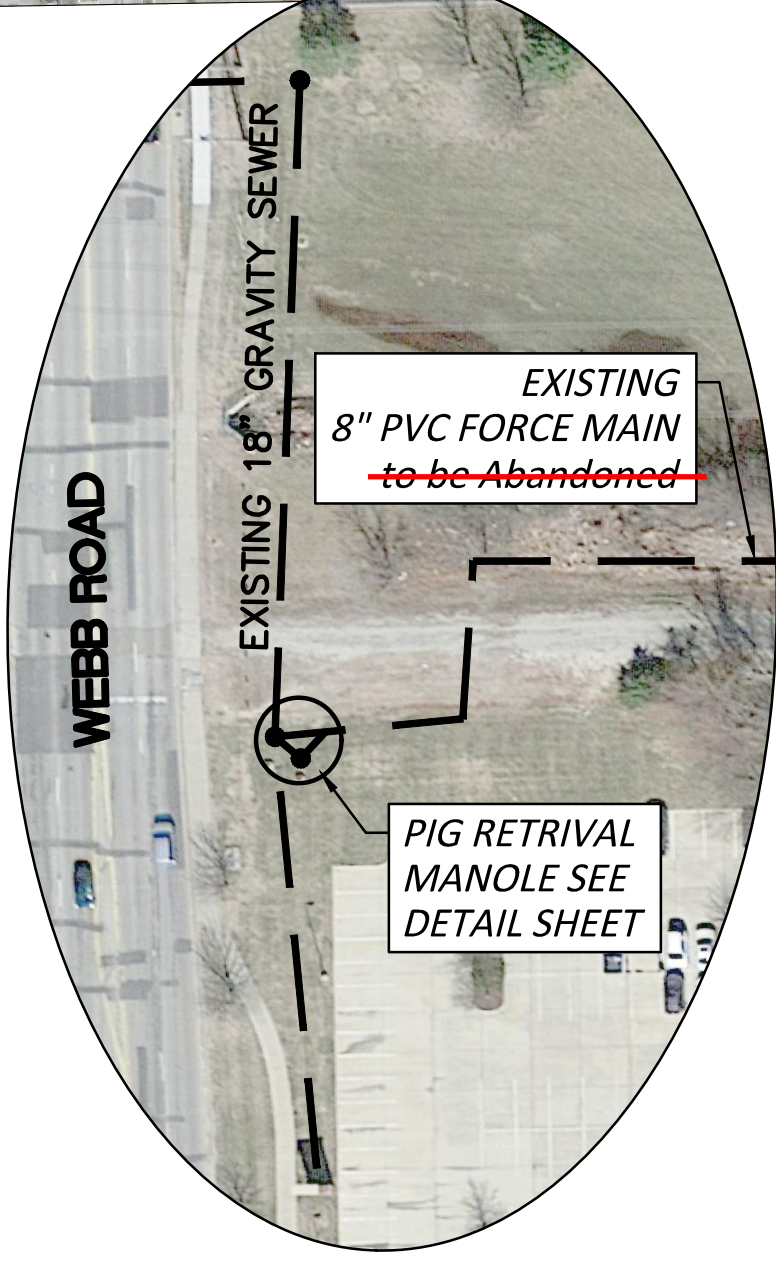
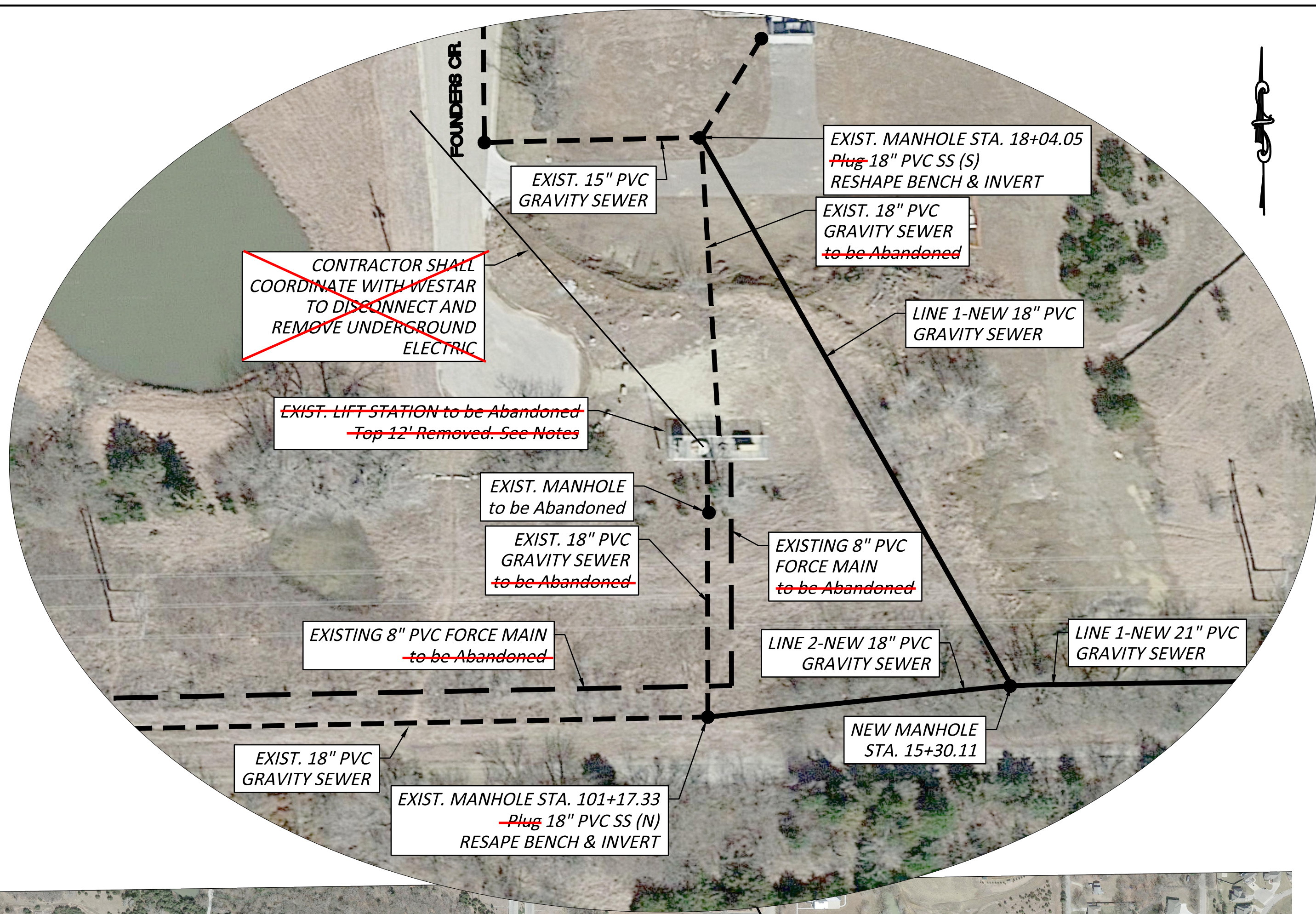
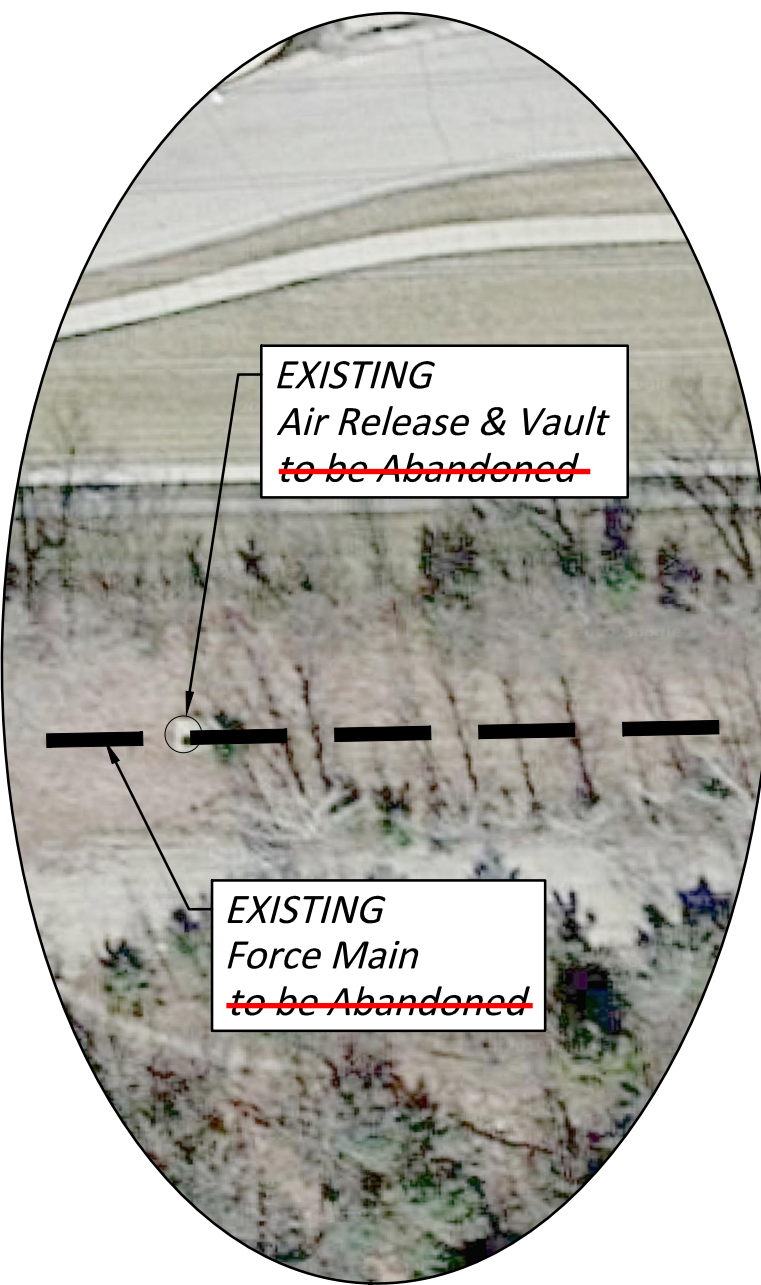
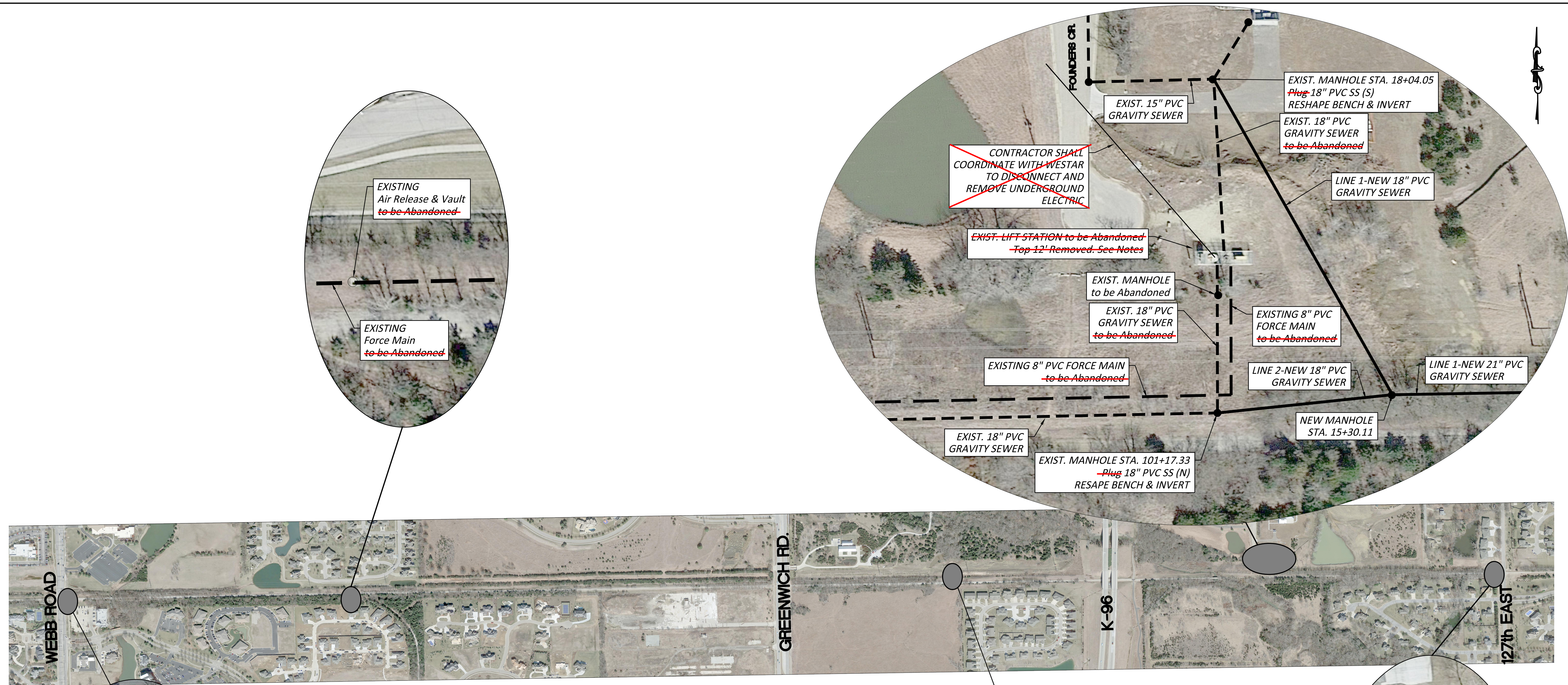
POE & ASSOCIATES, INC.
CONSULTING ENGINEERS
544 W. Douglas Wichita, KS 67203
Phone 316/685-4114 FAX 316/685-4444

CITY OF WICHITA, KANSAS
GARY JANZEN, P.E. - CITY ENGINEER
C.O.W. Project #468-85371 O.C.A. #228130

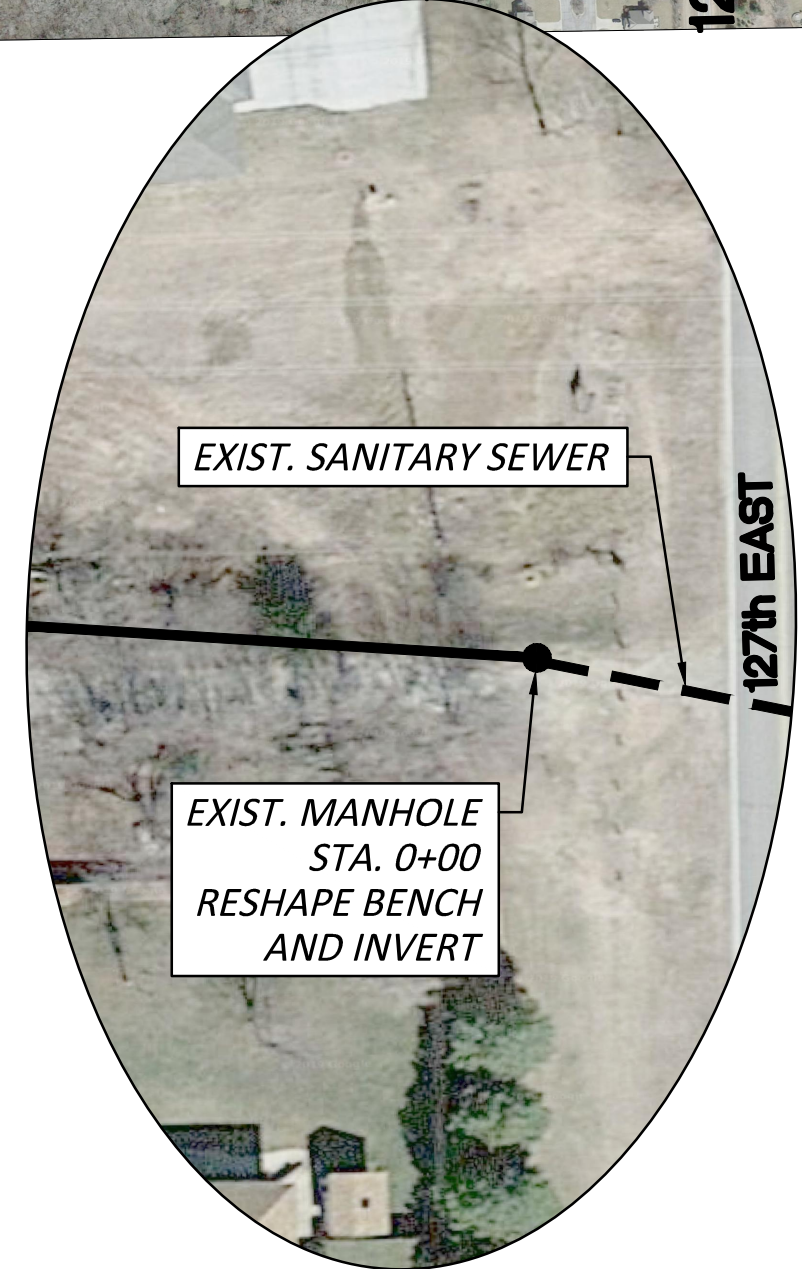
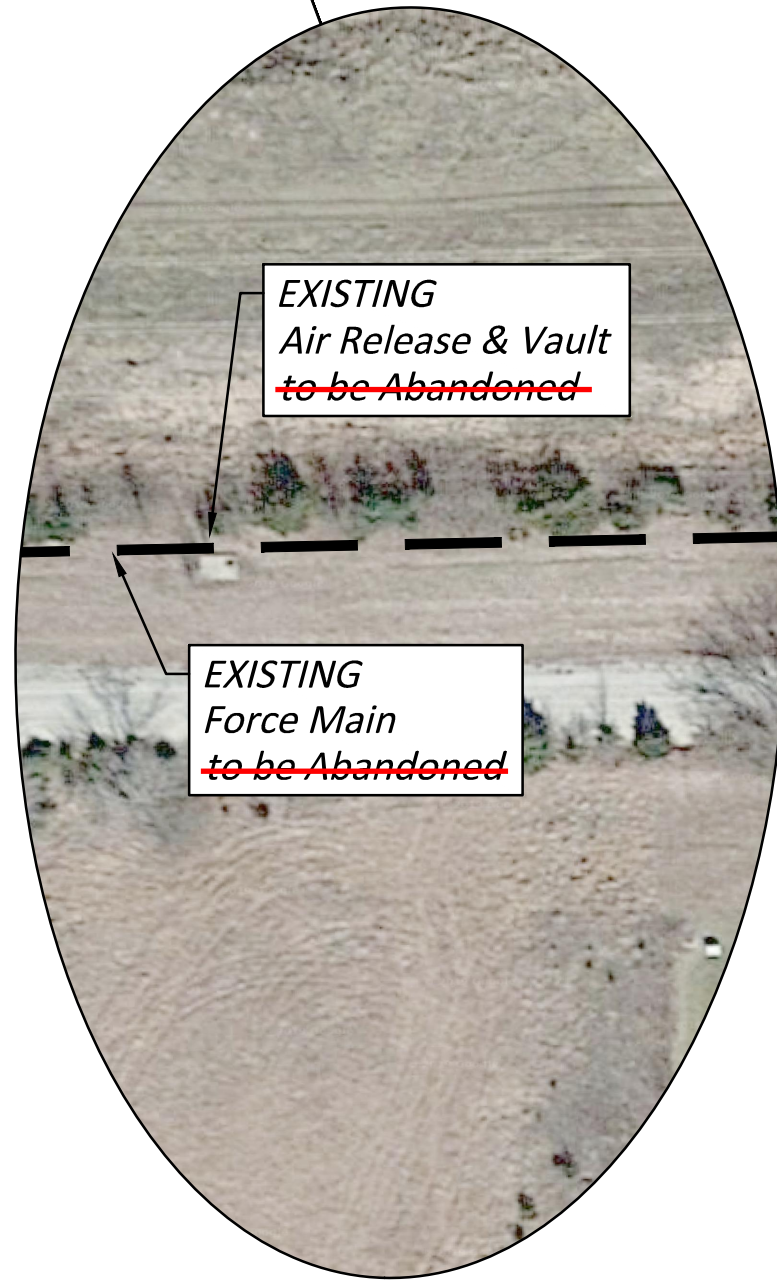
Engineer: R. GROTTE
Designer: J. UNRUH
Job No: 102127
Date: DECEMBER 2018

Sheet 4 of 16

No. By Date Approved Revision

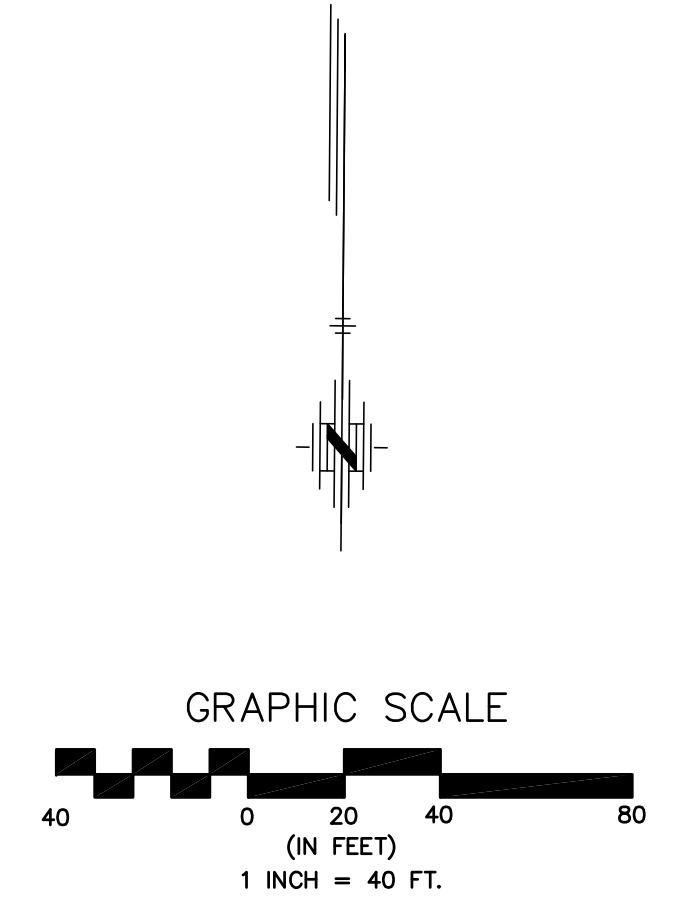
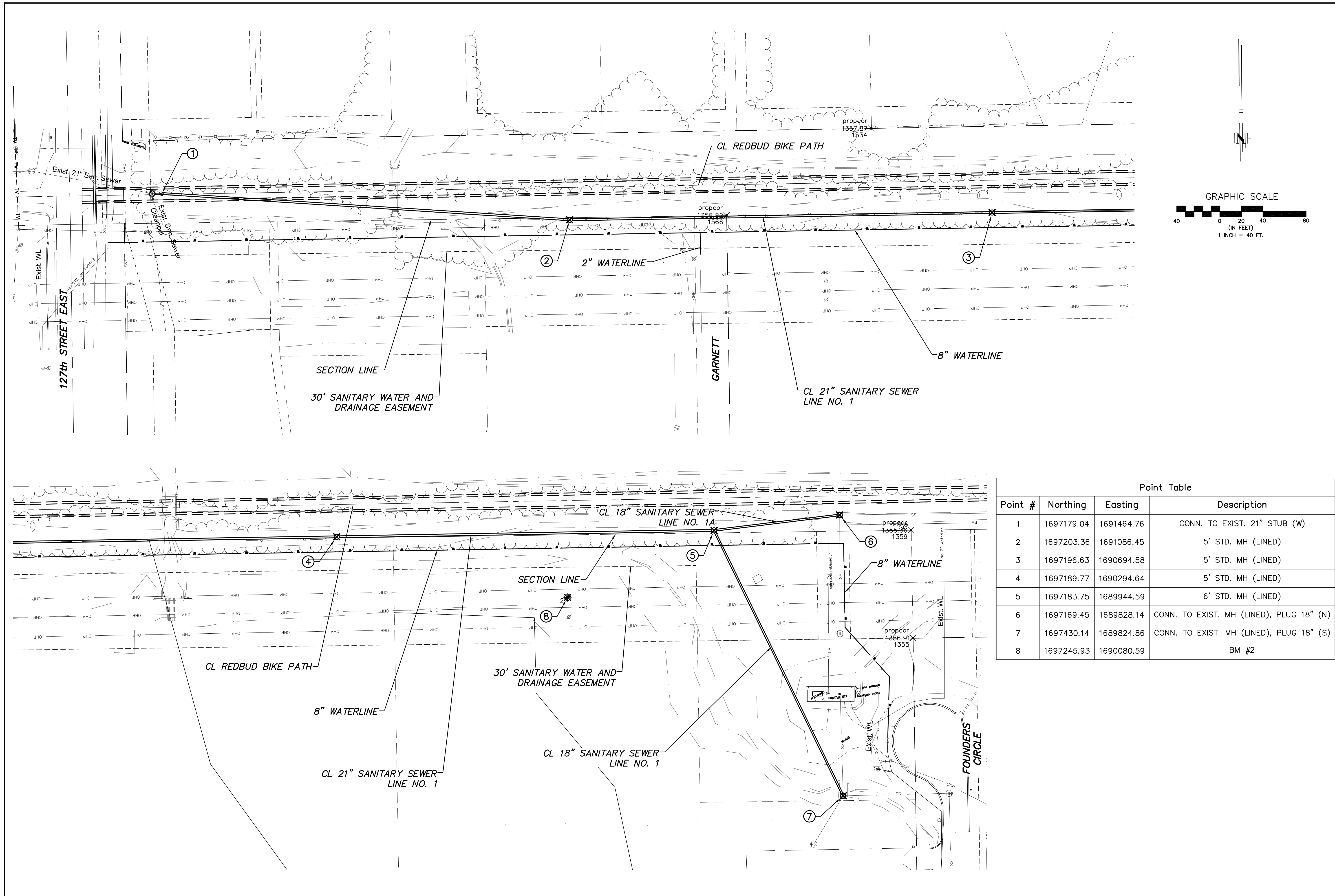


1. Construct Sanitary Sewer from Exist. Manhole Sta. 0+00 to Existing Manhole @ Sta. 18+04.05. Test and place in service.
2. Construct Sanitary Sewer from Manhole Sta. 15+30.11 (Line 1) to Manhole Sta. 101+17.33 (line 2). Test and place in Service
3. ~~Abandon~~ Gravity Sewer PER City Specs. from Manhole Sta. 18+04.05 to Lift Station and Manhole Sta. 101+17.33 to Lift Station.
4. ~~Abandon~~ 8" PVC Force Main (9,250') from Lift Station to Webb Road.
5. EXIST. LIFT STATION ~~to be Abandoned, Remove Top 12 feet. Coordinate all Salvage material to City- ALL remaining material responsibility of Contractor for disposal. Cut & Plug all pipes, sand fill, flush & vibrate remaining Lift Station Structure. Final grading by path CONTRACTOR.~~

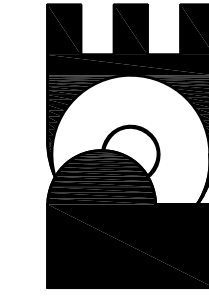


SANITARY SEWER PHASING AND ABANDONMENT PLAN

REDDUD BIKE PATH		SANITARY SEWER EXTENSION 21" MAIN		CITY OF WICHITA, KANSAS		GARY JANZEN, P.E. CITY ENGINEER		C.O.N. Project #468-85371, O.C.A. #626130	
POE & ASSOCIATES, INC. CONSULTING ENGINEERS		544 W. Douglas Wichita, KS 67203		Phone 316/685-4114 FAX 316/685-4444		No.		By	
Date		No.		By		Date		Revision	
5		of		16		Date: DECEMBER 2018		Sheet	



Point Table			
Point #	Northing	Easting	Description
1	1697179.04	1691464.76	CONN. TO EXIST. 21" STUB (W)
2	1697203.36	1691086.45	5' STD. MH (LINED)
3	1697196.63	1690694.58	5' STD. MH (LINED)
4	1697189.77	1690294.64	5' STD. MH (LINED)
5	1697183.75	1689944.59	6' STD. MH (LINED)
6	1697169.45	1689828.14	CONN. TO EXIST. MH (LINED), PLUG 18" (N)
7	1697430.14	1689824.86	CONN. TO EXIST. MH (LINED), PLUG 18" (S)
8	1697245.93	1690080.59	BM #2

REBUD BIKE PATH SANITARY SEWER EXTENSION 21" MAIN	CITY OF WICHITA, KANSAS GARY JANZEN, P.E. - CITY ENGINEER C.O.W. Project #468-85371 O.C.A. #28130	POE & ASSOCIATES, INC. CONSULTING ENGINEERS 544 W. Douglas Wichita, KS 67203 Phone 316/665-4114 FAX 316/665-4444		FINAL Engineer: R. GROTTE Designer: J. UNRUH Job No: 102127 Date: DECEMBER 2018	Approved: _____ By: _____ Date: _____ No. _____	Approved: _____ By: _____ Date: _____ No. _____	Approved: _____ By: _____ Date: _____ No. _____
14	of	16					