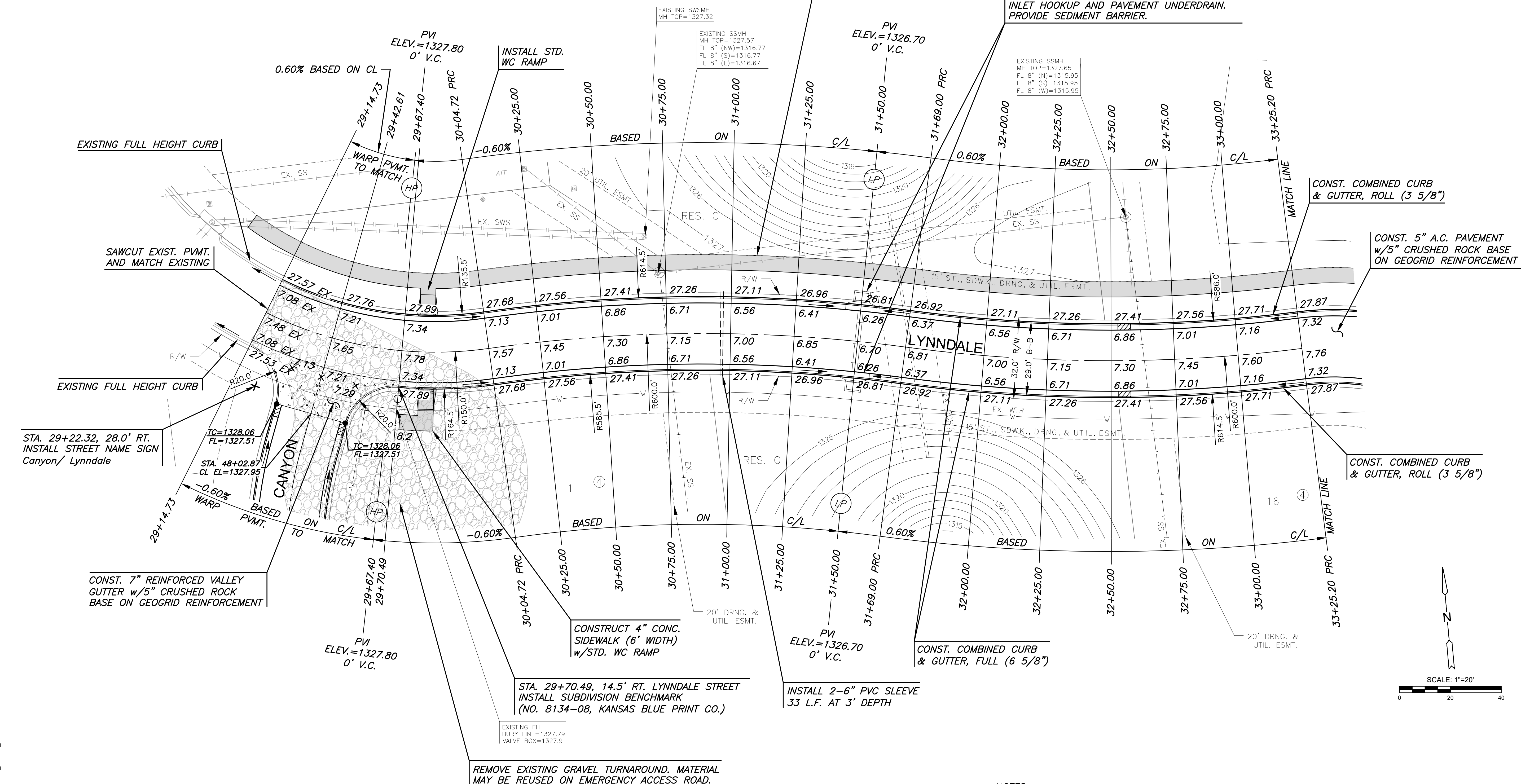


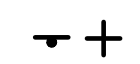
SUBDIVISION BENCH MARKS				
NO.	STREET AND STATION	FROM CL	DESCRIPTION	ELEVATIONS
1	LYNNDALE, STA. 29+70.49	14.5' RT	TOP OF CURB AT FIRE HYDRANT	


NOTE: CONTRACTOR SHALL INSTALL SUBDIVISION BENCH MARKS ("FLAT SURVEY MARKERS NO. 8134-08 3" TOP DIAMETER" PROVIDED BY KANSAS BLUE PRINT CO., INC.) COSTS TO BE CONSIDERED SUBSIDIARY TO CONSTRUCTION OF COMBINED CURB AND GUTTER.



- NOTES:
- TOP OF CURB ELEVATIONS SHOWN ARE FOR FULL CURB. CONSTRUCT CURB AND GUTTER AS NOTED.
  - PVC SLEEVES TO BE BURIED AT A DEPTH OF 3' TO TOP OF SLEEVE, MINIMUM.
  - VALLEY GUTTER CURBS SHALL BE FULL HEIGHT MONOLITHIC CURB.
  - ADJUST VALVE BOXES AS NEEDED TO MATCH PROPOSED GRADES. COST SUBSIDIARY TO PROJECT.

**LEGEND**

 STREET SIGN & SIGN LOCATION (SEE SIGN ASSEMBLY TABLE FOR TYPE & STATION OF SIGN)

 5' TRANSITION FROM FULL TO ROLL CURB

©2021 MKEC Engineering All Rights Reserved www.mkec.com  
These drawings and their contents, including, but not limited to, all concepts, designs, & ideas are the exclusive property of MKEC Engineering (MKEC), and may not be used or reproduced in any way without the express consent of MKEC.

CANYON - LYNNDALE		
PROJECT NO.	472-2020-085657	
DATE	MAY 2021	
SCALE	1"=20'	
DESIGNED	DRAWN	CHECKED
DFL	CRM	JAG
NO.	REVISION	DATE
SHEET NO.		
07 OF 51		

J:\PROJECTS\2018\1601010221\_PERFECTION\_AUBURN\_LAKES\_16221\_CAD\SHOTS\05\_CIVIL\PAV\PHASE\_3\16221-08-565657.DWG  
 PLOTTED: Monday, May 10, 2021 @ 10:00AM