

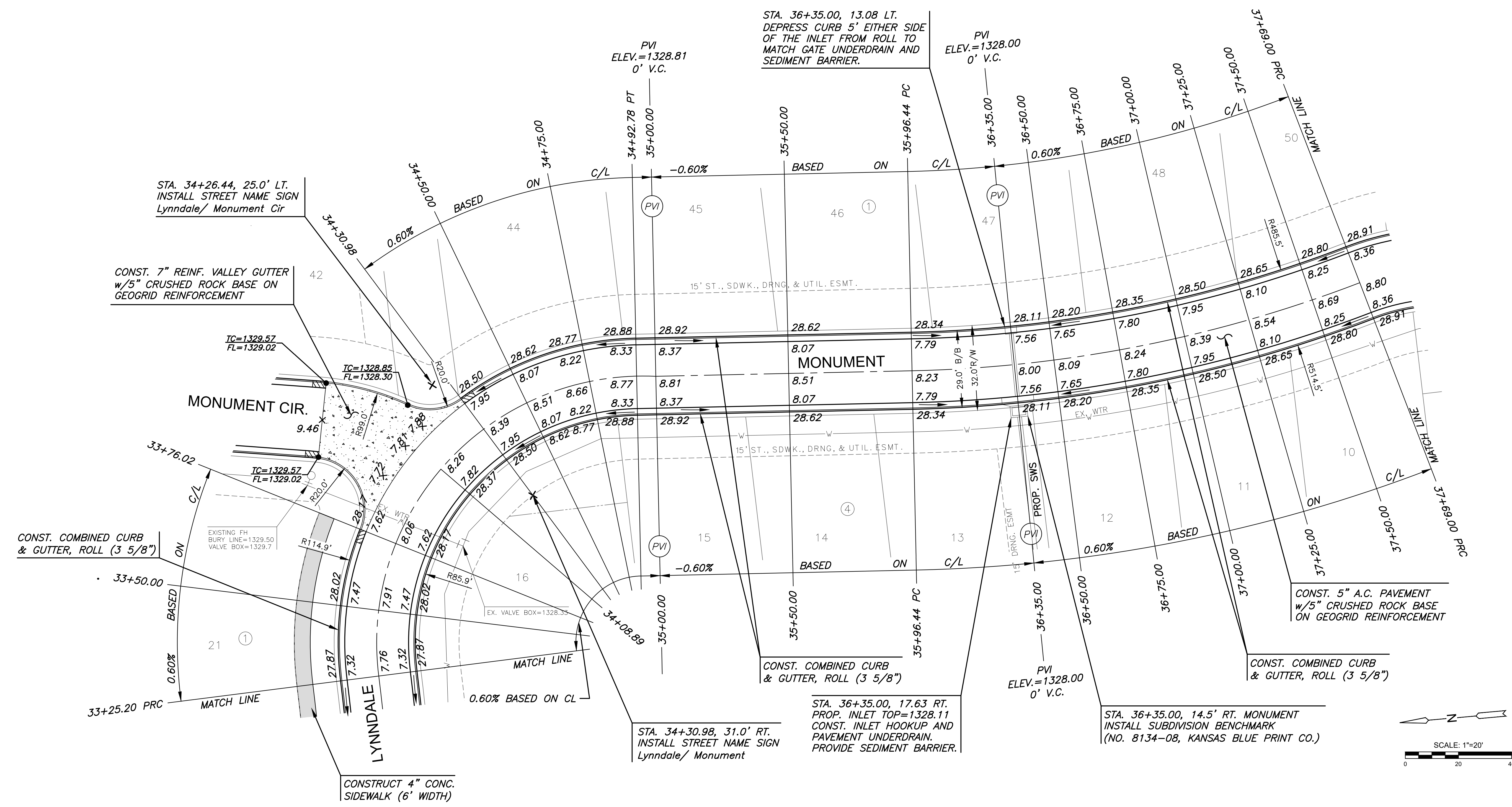
J:\PROJECTS\2018\1601010221_1_PERFECTION_AUBURN_LAKES_16221_CAD\SHOTS\05_CIVIL\PAV\PHASE 3\16221-05-2021.DWG
 PLOTTED: Monday, May 10, 2021 @ 10:31 AM

| SUBDIVISION BENCH MARKS | | | | |
|-------------------------|-------------------------|----------|--------------------------------------|------------|
| NO. | STREET AND STATION | FROM CL | DESCRIPTION | ELEVATIONS |
| 1 | MONUMENT, STA. 36+35.00 | 14.5' RT | TOP OF CURB AT W END OF INLET HOOKUP | |

NOTE: CONTRACTOR SHALL INSTALL SUBDIVISION BENCH MARKS ("FLAT SURVEY MARKERS NO. 8134-08 3" TOP DIAMETER" PROVIDED BY KANSAS BLUE PRINT CO., INC.) COSTS TO BE CONSIDERED SUBSIDIARY TO CONSTRUCTION OF COMBINED CURB AND GUTTER.



PAVING & INCIDENTAL DRAINAGE FOR
AUBURN LAKES
 PHASE 3

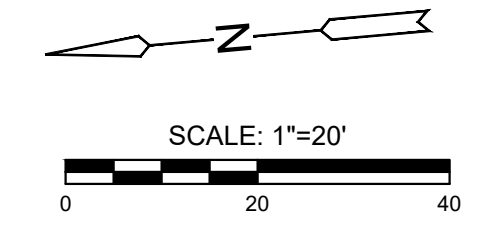


- NOTES:
- TOP OF CURB ELEVATIONS SHOWN ARE FOR FULL CURB. CONSTRUCT CURB AND GUTTER AS NOTED.
 - PVC SLEEVES TO BE BURIED AT A DEPTH OF 3' TO TOP OF SLEEVE, MINIMUM.
 - VALLEY GUTTER CURBS SHALL BE FULL HEIGHT MONOLITHIC CURB.
 - ADJUST VALVE BOXES AS NEEDED TO MATCH PROPOSED GRADES. COST SUBSIDIARY TO PROJECT.

LEGEND

STREET SIGN & SIGN LOCATION (SEE SIGN ASSEMBLY TABLE FOR TYPE & STATION OF SIGN)

5' TRANSITION FROM FULL TO ROLL CURB



©2021 MKEC Engineering All Rights Reserved www.mkec.com
 These drawings and their contents, including, but not limited to, all concepts, designs, & ideas are the exclusive property of MKEC Engineering (MKEC), and may not be used or reproduced in any way without the express consent of MKEC.

LYNNDALE - MONUMENT

| | |
|-------------|-----------------|
| PROJECT NO. | 472-2020-085657 |
| DATE | MAY 2021 |
| SCALE | 1"=20' |
| DESIGNED | DFL |
| DRAWN | CRM |
| CHECKED | JAG |

| NO. | REVISION | DATE |
|-----|----------|------|
| | | |