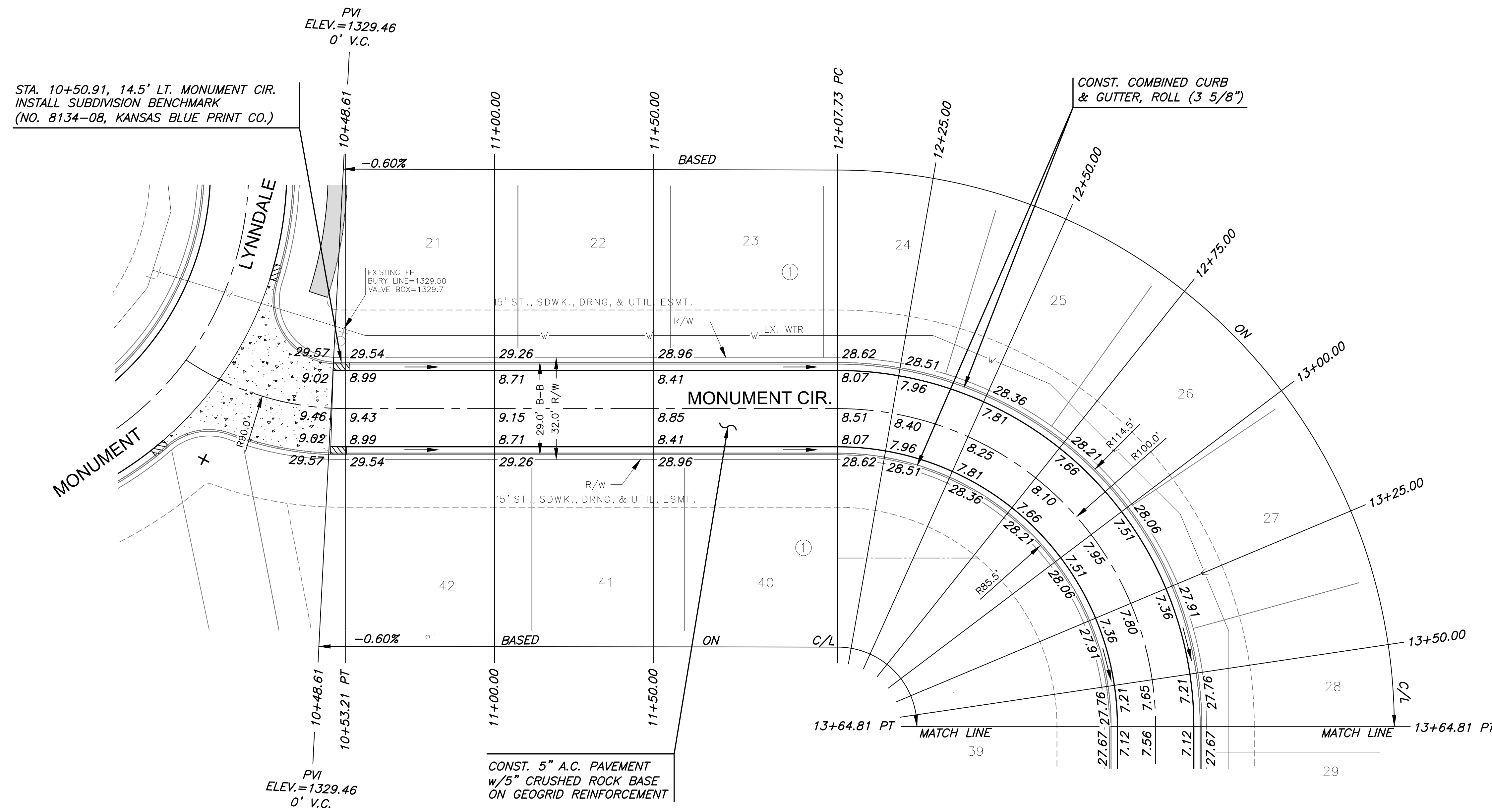
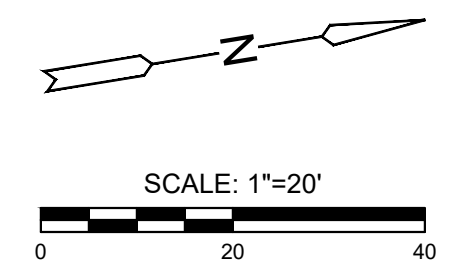


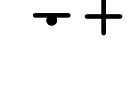
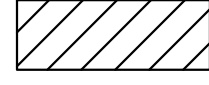
SUBDIVISION BENCH MARKS				
NO.	STREET AND STATION	FROM CL	DESCRIPTION	ELEVATIONS
1	MONUMENT CIR. STA. 10+50.91	14.5' LT	TOP OF CURB AT FIRE HYDRANT	

NOTE: CONTRACTOR SHALL INSTALL SUBDIVISION BENCH MARKS ("FLAT SURVEY MARKERS NO. 8134-08 3" TOP DIAMETER" PROVIDED BY KANSAS BLUE PRINT CO., INC.) COSTS TO BE CONSIDERED SUBSIDIARY TO CONSTRUCTION OF COMBINED CURB AND GUTTER.



- NOTES:
- TOP OF CURB ELEVATIONS SHOWN ARE FOR FULL CURB. CONSTRUCT CURB AND GUTTER AS NOTED.
 - PVC SLEEVES TO BE BURIED AT A DEPTH OF 3' TO TOP OF SLEEVE, MINIMUM.
 - VALLEY GUTTER CURBS SHALL BE FULL HEIGHT MONOLITHIC CURB.
 - ADJUST VALVE BOXES AS NEEDED TO MATCH PROPOSED GRADES. COST SUBSIDIARY TO PROJECT.



- LEGEND**
-  STREET SIGN & SIGN LOCATION (SEE SIGN ASSEMBLY TABLE FOR TYPE & STATION OF SIGN)
 -  5' TRANSITION FROM FULL TO ROLL CURB

©2021 MKEC Engineering All Rights Reserved www.mkec.com
These drawings and their contents, including, but not limited to, all concepts, designs, & ideas are the exclusive property of MKEC Engineering (MKEC), and may not be used or reproduced in any way without the express consent of MKEC.

MONUMENT CIR

PROJECT NO.	472-2020-085657
DATE	MAY 2021
SCALE	1"=20'
DESIGNED	DFL
DRAWN	CRM
CHECKED	JAG

NO.	REVISION	DATE

J:\PROJECTS\2016\1601010221_PERFECTION_AUBURN_LAKES_16221_CAD\SHOTS\05_CIVIL\PAV\PHASE 3\16221-08-5204.DWG
 PLOTTED: Monday, May 10, 2021 @ 10:33AM