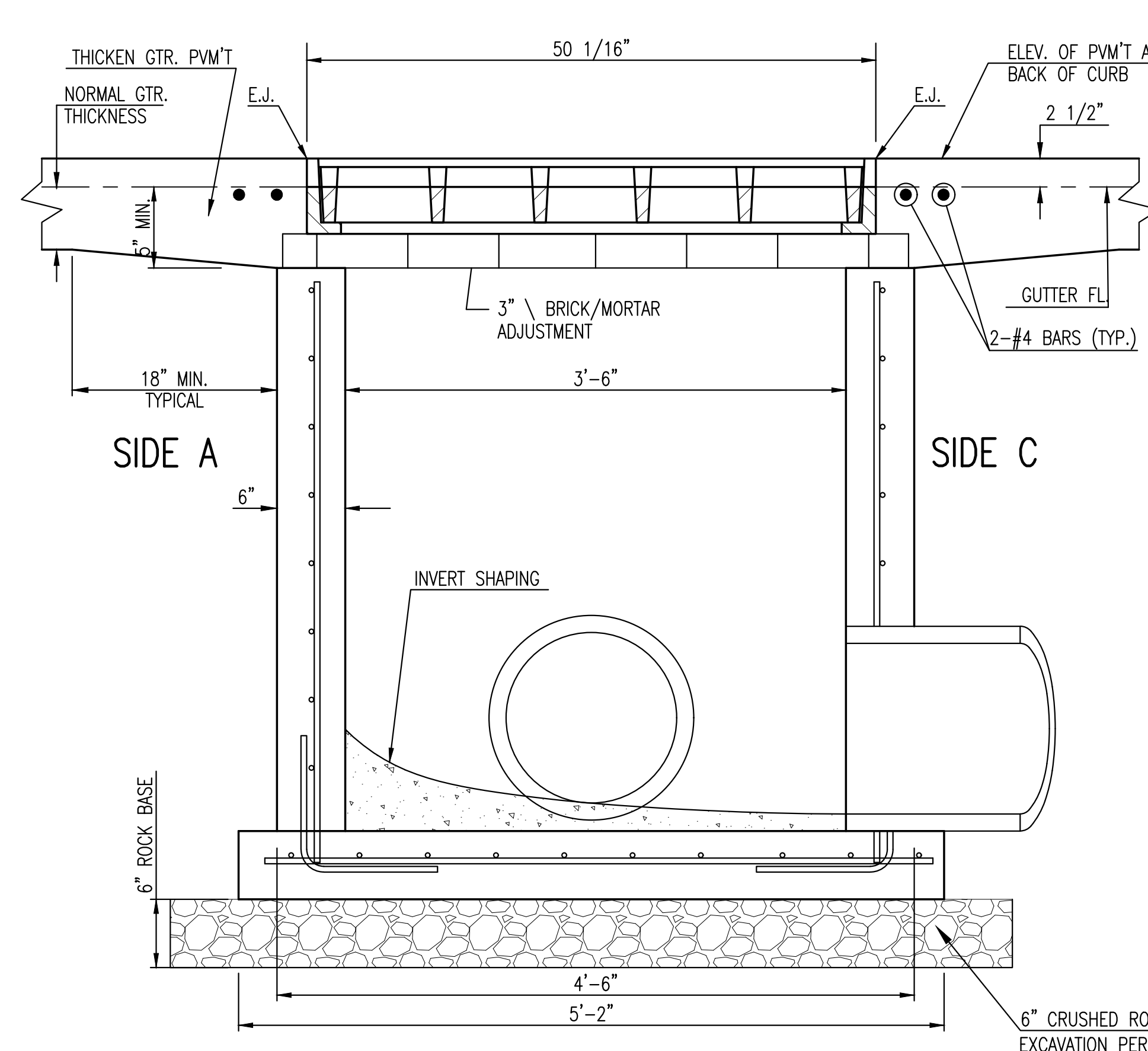
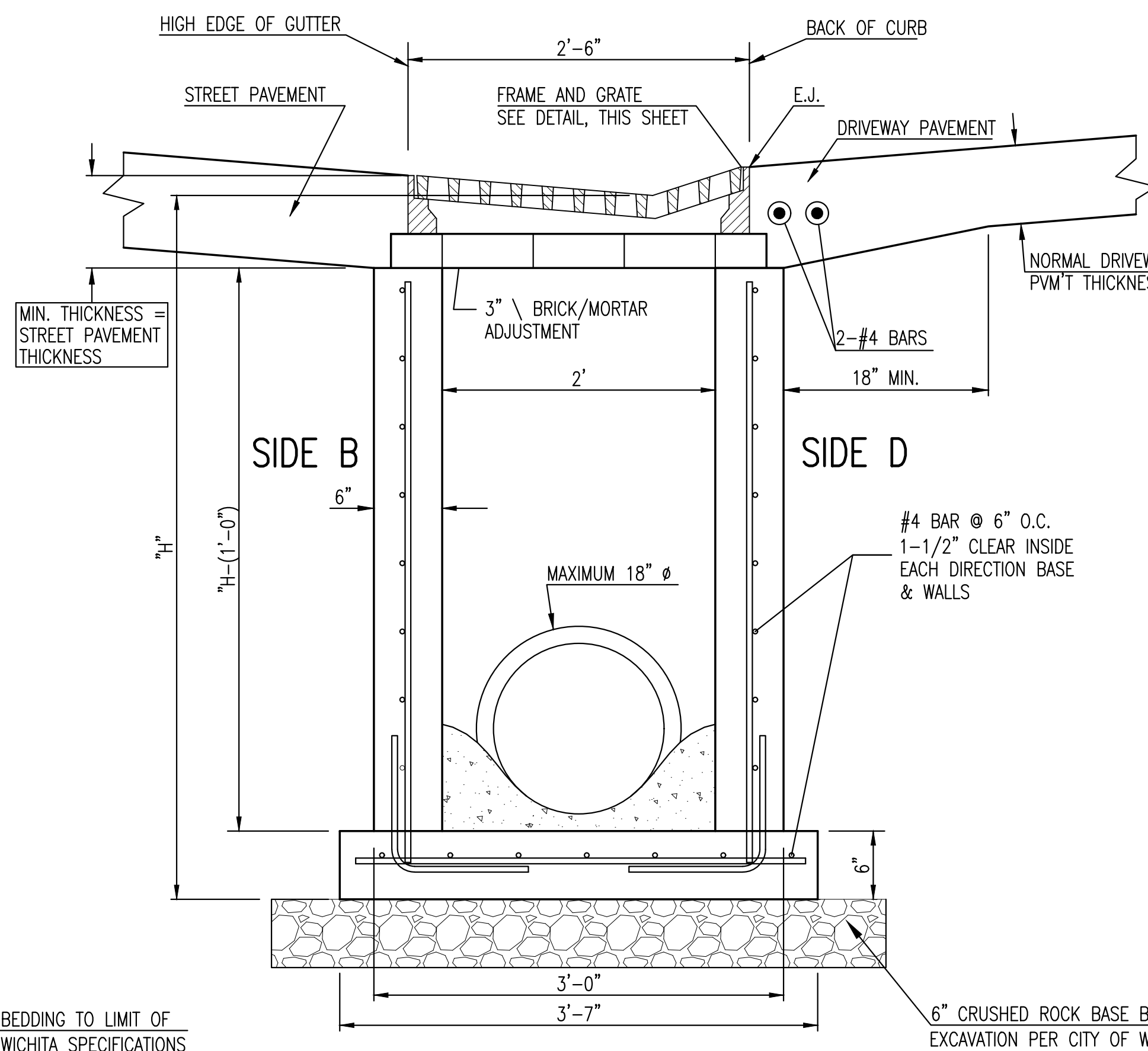


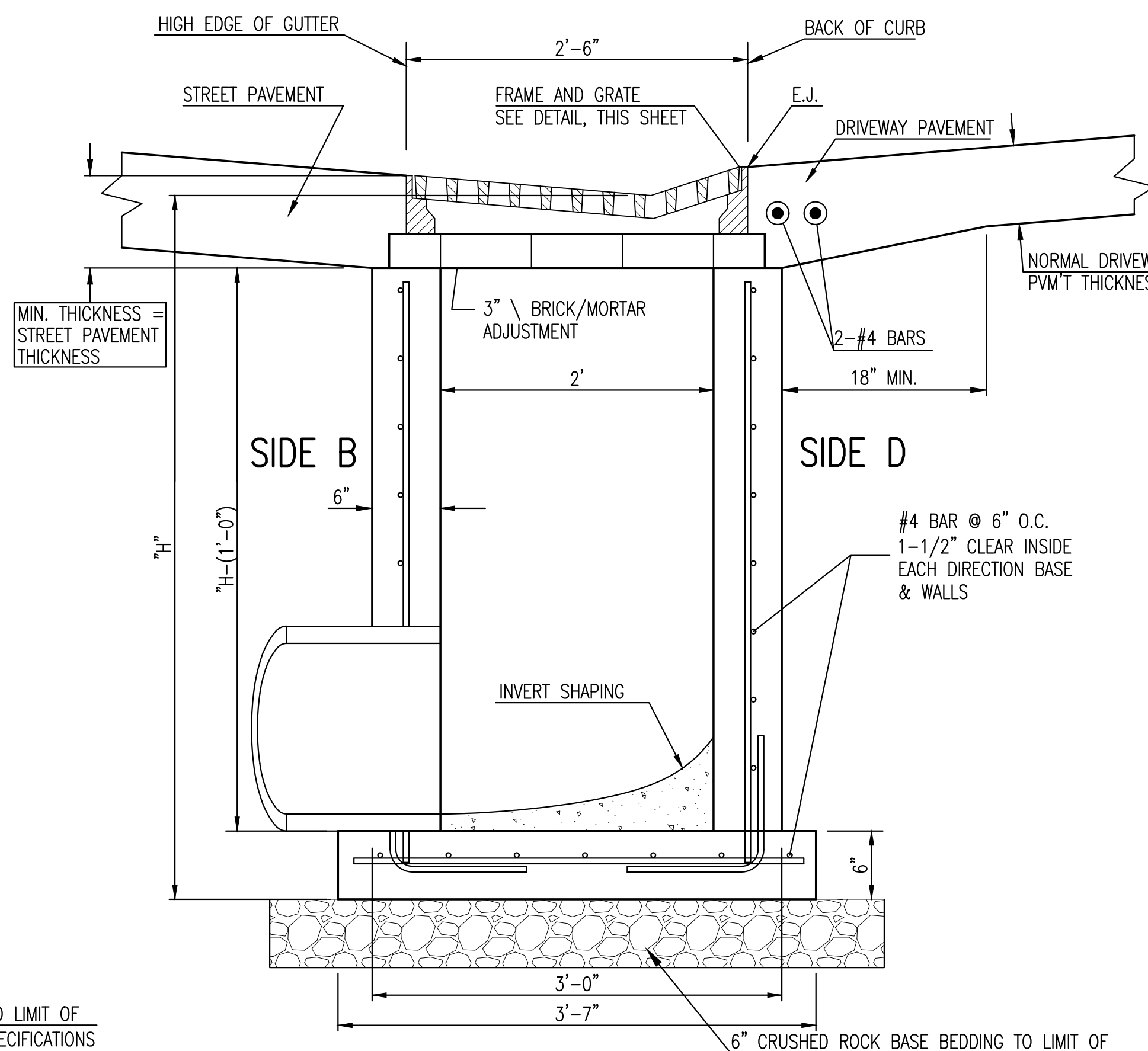
FRAME & GRATE
 DEETER #2095 TOTAL WEIGHT: 705 LBS.
 EJIW #7392 TOTAL WEIGHT: 675 LBS.



SECTION "A-A"



SECTION "B-B" END OUTLET



SECTION "B-B" SIDE OUTLET

- GENERAL NOTES**
- GRATE FRAME TO BE INSTALLED ON THIN MORTAR CUSHION TO INSURE FULL SUPPORT ALONG BRICK. CONCRETE USED FOR INLET CONSTRUCTION SHALL CONFORM TO CITY OF WICHITA SPECIFICATIONS FOR CONCRETE PAVEMENT MIX.
 - CONTRACTOR SHALL HAVE THE OPTION OF CONSTRUCTING 8" BRICK MASONRY WALL BETWEEN THE CONCRETE INLET BASE AND TOP OF THIS INLET WHEN H=7'-0" OR LESS.
 - INLET INVERT SHALL BE SHAPED WITH 8 SACK SAND MIX CONCRETE TO CREATE FLOW CHANNELS AND TO INCREASE HYDRAULIC EFFICIENCY SUCH THAT THE INLET WILL BE SELF CLEANING BETWEEN ALL INLET AND/OR OUTLET PIPES.
 - THE ENDS OF ALL PIPES INSTALLED IN INLETS SHALL BE CUT OFF FLUSH WITH THE INSIDE FACE OF THE INLET WALL.
 - INLET FRAME AND GRATE TO BE DEETER #2095, EJIW #7392, OR APPROVED EQUAL.
 - CONTRACTOR SHALL REMOVE LIFTING HOOKS AFTER INSTALLATION. RECESSES IN INLET WALL SHALL BE GROUTED FLUSH TO THE INLET WALL WITH HYDRAULIC CEMENT AFTER THE INLET IS IN PLACE. LIFTING HOLES THRU THE INLET WALL WILL NOT BE ACCEPTED.



REVISED: MARCH 2015

GRADED DRIVEWAY INLET (SINGLE)

CITY ENGINEER
GARY JANZEN, P.E.

PROJECT NUMBER 472-2020-085657	OCA NUMBER 474767321	DATE MAY 2021
CITY ENGINEER'S OFFICE CITY HALL - SEVENTH FLOOR 455 NORTH MAIN STREET WICHITA, KANSAS 67202-1620 (316) 268-4501		SHEET 20 OF 51

Saved 05-03-2021 9:23:11 AM by CODY
 Plot Scale: 1:1 05-10-2021 10:07:05 AM by LUIS MIGUEL
 J:\Projects\2016\1601010221_Perfection_Auburn_Lakes\16221 CAD\SHTS\05 Civil\Sws\Phase 3\sw-108 grate driveway inlet

J:\Projects\2016\1601010221_Perfection_Auburn_Lakes\16221 CAD\SHTS\05 Civil\Sws\Phase 3\sw-108 grate driveway inlet.dwg