

Remove Bulbout C&G, Tree, Soil, Power Boxes and Irrigation Lines, Repair Lot Surface

**CAUTION:**  
8-INCH LP GAS LINE

Sawcut Existing Curb and Gutter at 2 Points to Accept New Curb.

Inlet to be protected during construction.

Area A soil shall be elevated to 4" below top of curb, and compacted. Area A to be filled with concrete edge to edge, hand-finished to ensure positive top surface drainage.

Retain Existing Sidewalk South of Building

Retain Existing Inner Curb Return on North Side

Retain Existing Inner Curb Return North to Building

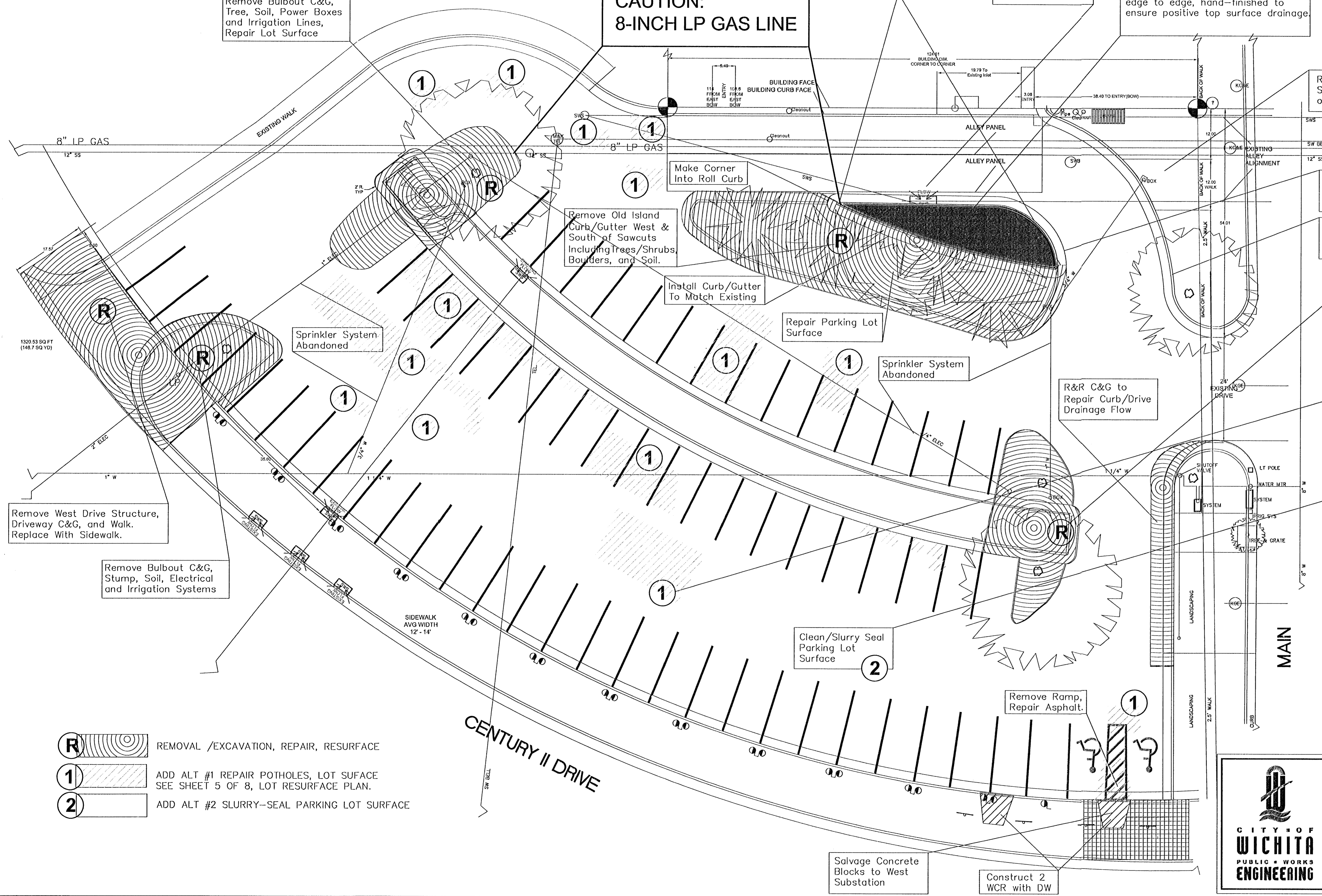
Remove Bulbout C&G, Tree, Soil, Electrical/Irrigation Systems. Repair Lot Surface.

**Add Alternates:**

(Add Alternate 1.) Contractor Shall Repair 2-inch Existing Surface Asphalt, As Directed By Engineer.

(Add Alternate 2.) Clean/Slurry Seal Parking Lot Surface.

**NOTE:**  
CONTRACTOR IS TO CONSIDER ANY UNDERGROUND SPRINKLER SYSTEM FOUND WITHIN PROJECT LIMITS TO BE ABANDONED.



Remove West Drive Structure, Driveway C&G, and Walk. Replace With Sidewalk.

Remove Bulbout C&G, Stump, Soil, Electrical and Irrigation Systems

Sprinkler System Abandoned

Install Curb/Gutter To Match Existing

Repair Parking Lot Surface

Sprinkler System Abandoned

R&R C&G to Repair Curb/Drive Drainage Flow

Clean/Slurry Seal Parking Lot Surface

Remove Ramp, Repair Asphalt.

Salvage Concrete Blocks to West Substation

Construct 2 WCR with DW

- (R)** REMOVAL /EXCAVATION, REPAIR, RESURFACE
- (1)** ADD ALT #1 REPAIR POTHOLES, LOT SURFACE SEE SHEET 5 OF 8, LOT RESURFACE PLAN.
- (2)** ADD ALT #2 SLURRY-SEAL PARKING LOT SURFACE



**CENTURY II PLAZA LOT EXISTING SITE PLAN**

CITY ENGINEER  
**JAMES L. ARMOUR, P.E.**

PROJECT NUMBER 472 - 83951 OCA NUMBER 706878 DATE MAR 2, 04

CITY ENGINEER'S OFFICE  
CITY HALL - SEVENTH FLOOR  
455 NORTH MAIN STREET  
WICHITA, KANSAS 67202-1620  
(316) 268-4501  
(316) 268-4114 FAX

DESIGN LRB  
DRAWN LRB  
SHEET 2 OF 8