

FHWA REG NO.	STATE	PROJECT NO.	YEAR	SHEET NO.	TOTAL SHEETS
7	KANSAS	87N-0196-01	2001	1	6

LANDSCAPE IMPROVEMENTS FOR CENTRAL & ROCK INTERSECTION

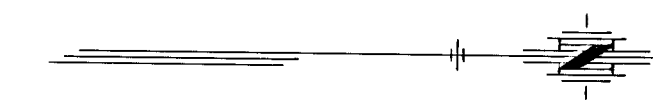
PROJ. #472-83393

MICHAEL E. LINDEBAK, CITY ENGINEER

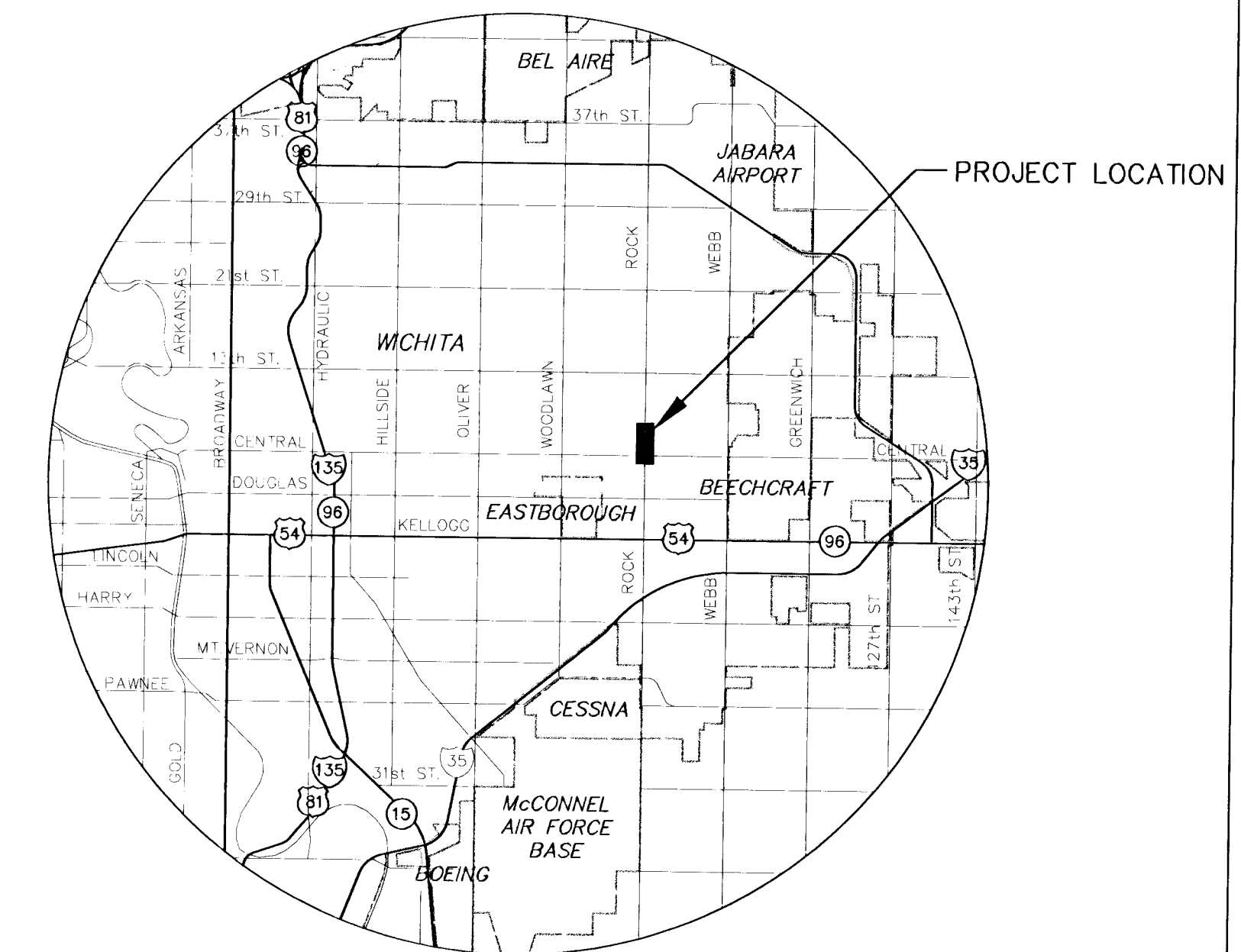
WICHITA, SEDGWICK COUNTY

POPULATION: 310,238

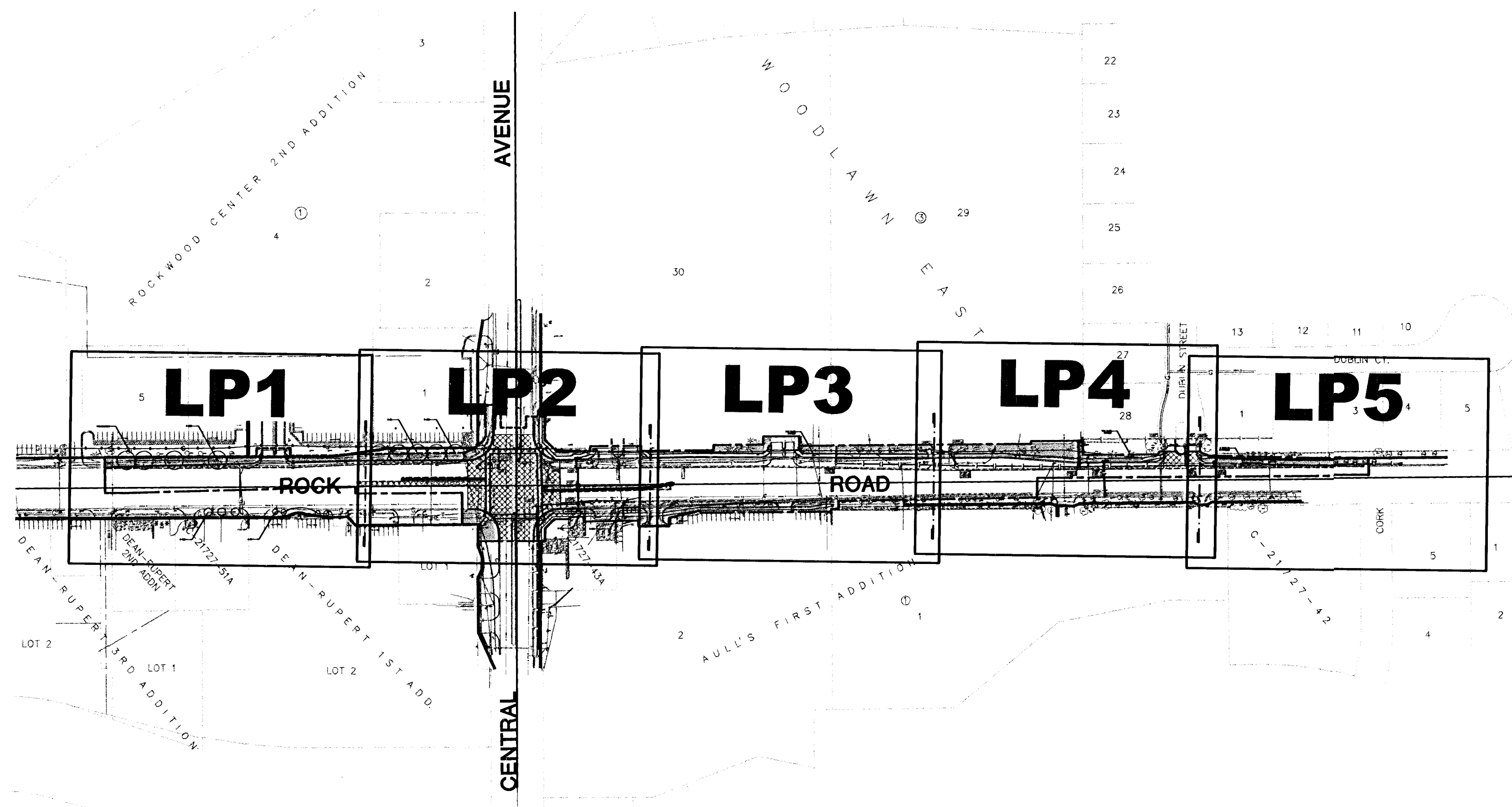
OCA# 706819



SCALE 1 : 2 000

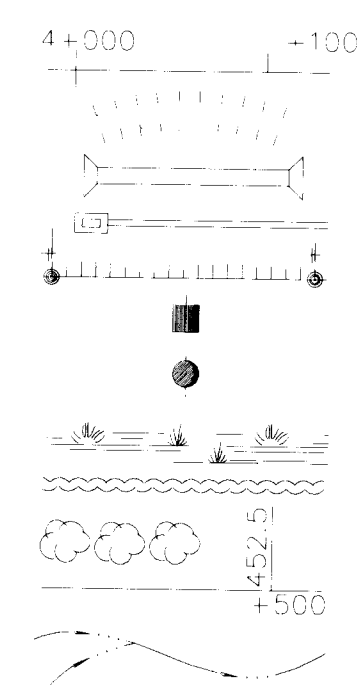


LOCATION MAP



CONVENTIONAL SIGNS

- | | | |
|-------------------------------------|------------------------------|------------|
| --- COUNTY LINE | ----- CENTER LINE OF PROJECT | 4+000 -100 |
| --- CITY LIMITS | ////// TERRACE | |
| --- STATE OR NATIONAL LINE | --- CULVERTS | |
| --- TOWNSHIP, SECTION or GRANT LINE | --- DROP INLET & STORM SEWER | |
| --- PROPERTY LINE | --- ACCESS CONTROL | |
| --- HIGHWAY FENCE | --- POWER POLE | |
| --- FENCING FENCE | --- TELEPHONE POLE | |
| --- GUARD FENCE | --- MARSH | |
| --- CONSTRUCTION LIMITS | --- HEDGE | |
| --- RIGHT OF WAY LINE | --- TREES | |
| --- TRAVELED WAY | --- PROFILE ELEVATION | |
| --- RAILROADS | --- STREAM or CREEK | |



CENTRAL & ROCK INTERSECTION
PROJECT NAME

LANDSCAPING IMPROVEMENTS
SHEET TITLE

DESIGN BY: TDM	DRAWN BY:	CHECKED BY: TDM
DATE: NOV. 2001	JOB NO.: 98166_LT	SHEET OF: 1 / 6

DATE	BY

Drawn By:	Checked By: