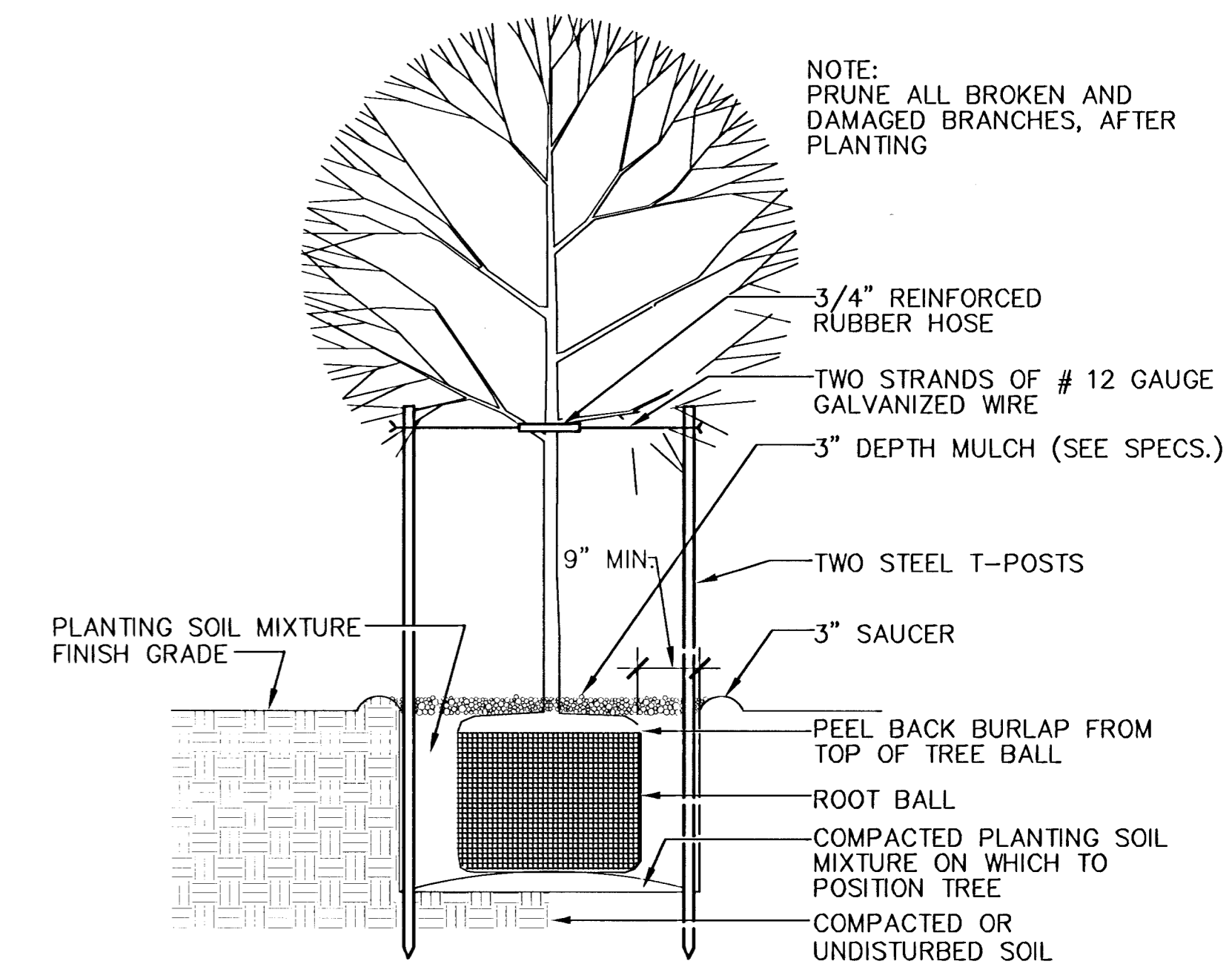
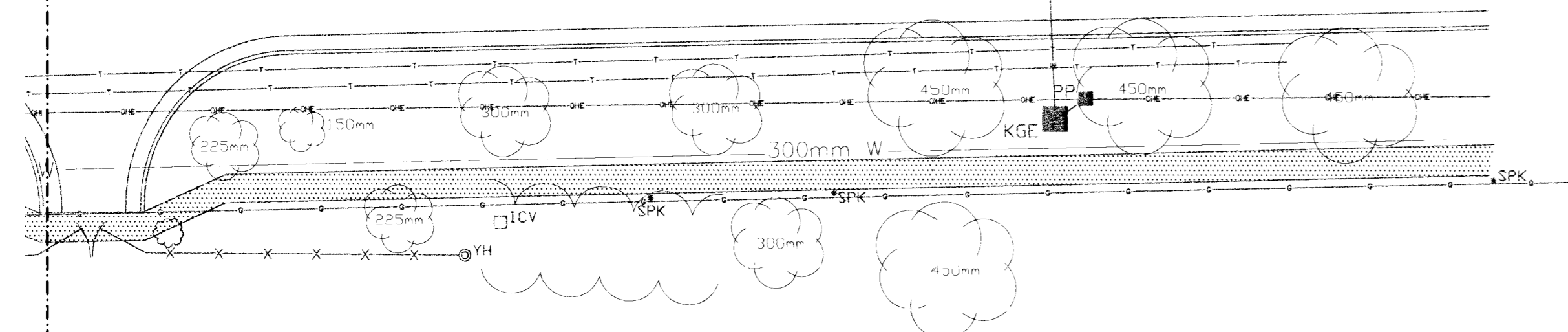
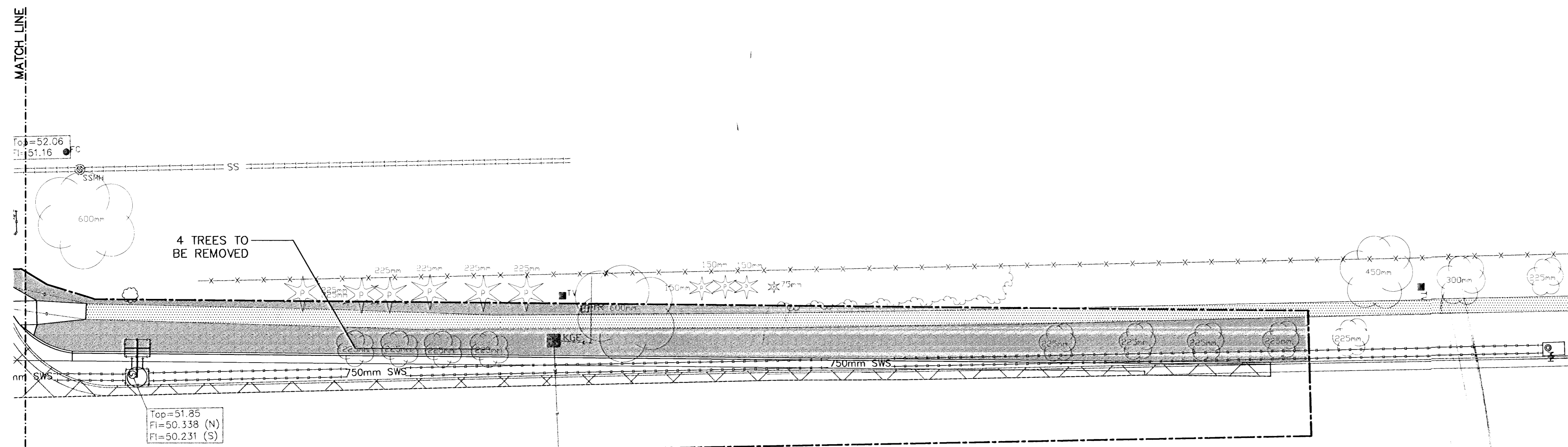


FHWA REG. NO.	STATE	PROJECT NO.	YEAR	SHEET NO.	TOTAL SHEETS
7	KANSAS	87 N-0196-01	2001	6	6

DATE	
BY	
REFERENCES NOTED	
REFERENCES CHECKED	



DECIDUOUS TREE PLANTING

1 NOT TO SCALE

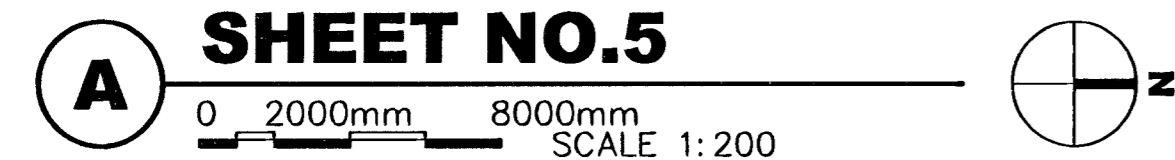
PLANT LIST

Trees

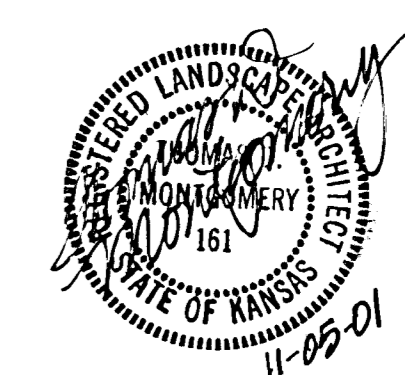
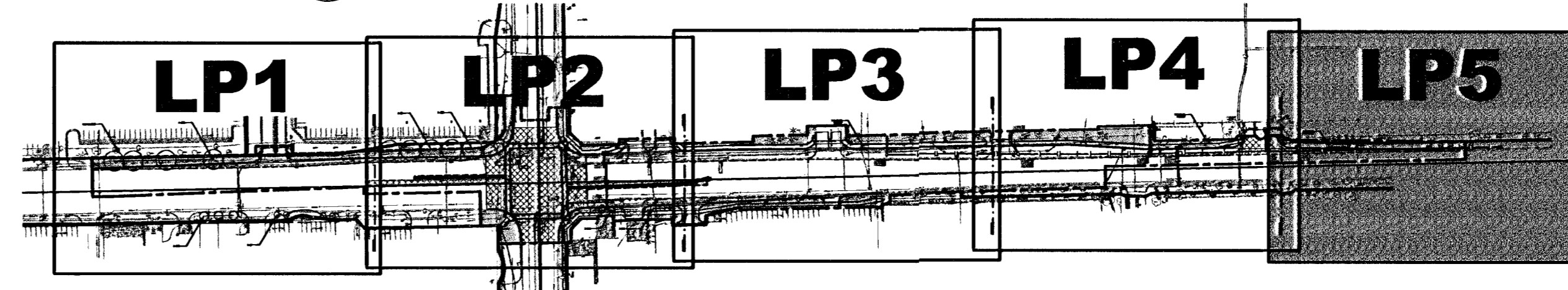
KEY	QTY.	COMMON NAME	BOTANICAL NAME	SIZE	CONDITION
ABM	6	AUTUMN BLAZE MAPLE	<i>Acer rubrum x freemanii</i> 'Autumn Blaze'	2' to 2 1/2' cal.	Balled-in-Burlap
CP	4	CAPITAL PEAR	<i>Pyrus calleryana</i> 'Capital'	2' to 2 1/2' cal.	Balled-in-Burlap
RBC	6	'RED BARRON' CRABAPPLE	<i>Malus sp.</i> 'Red Barron'	1 3/4' to 2' cal.	Balled-in-Burlap
SD	3	SHUMARD OAK	<i>Quercus shumardii</i>	2' to 2 1/2' cal.	Balled-in-Burlap
UED	3	UPRIGHT ENGLISH OAK	<i>Quercus robur</i> 'fastigiata'	2' to 2 1/2' cal.	Balled-in-Burlap

4,175 SY	FESCUE SOD
----------	------------

LANDSCAPE PLAN SHEET NO.5



KEY
NO SCALE



NO.	DATE	REVISIONS	BY	APP'D
2				
1				

KANSAS DEPARTMENT OF TRANSPORTATION
CENTRAL & ROCK INTERSECTION
STA. 4+740 TO STA. 4+870
PROJ. NO. 87 N-0196-01 SEDGWICK CO.
GOSSEN LIVINGSTON ARCHITECTS
WICHITA, KANSAS

DESIGNED BY: PFF
DRAWN BY: LES
CHECKED BY: TDM
DATE: NOV. 2001 SHEET 6 OF 6

18-13-01