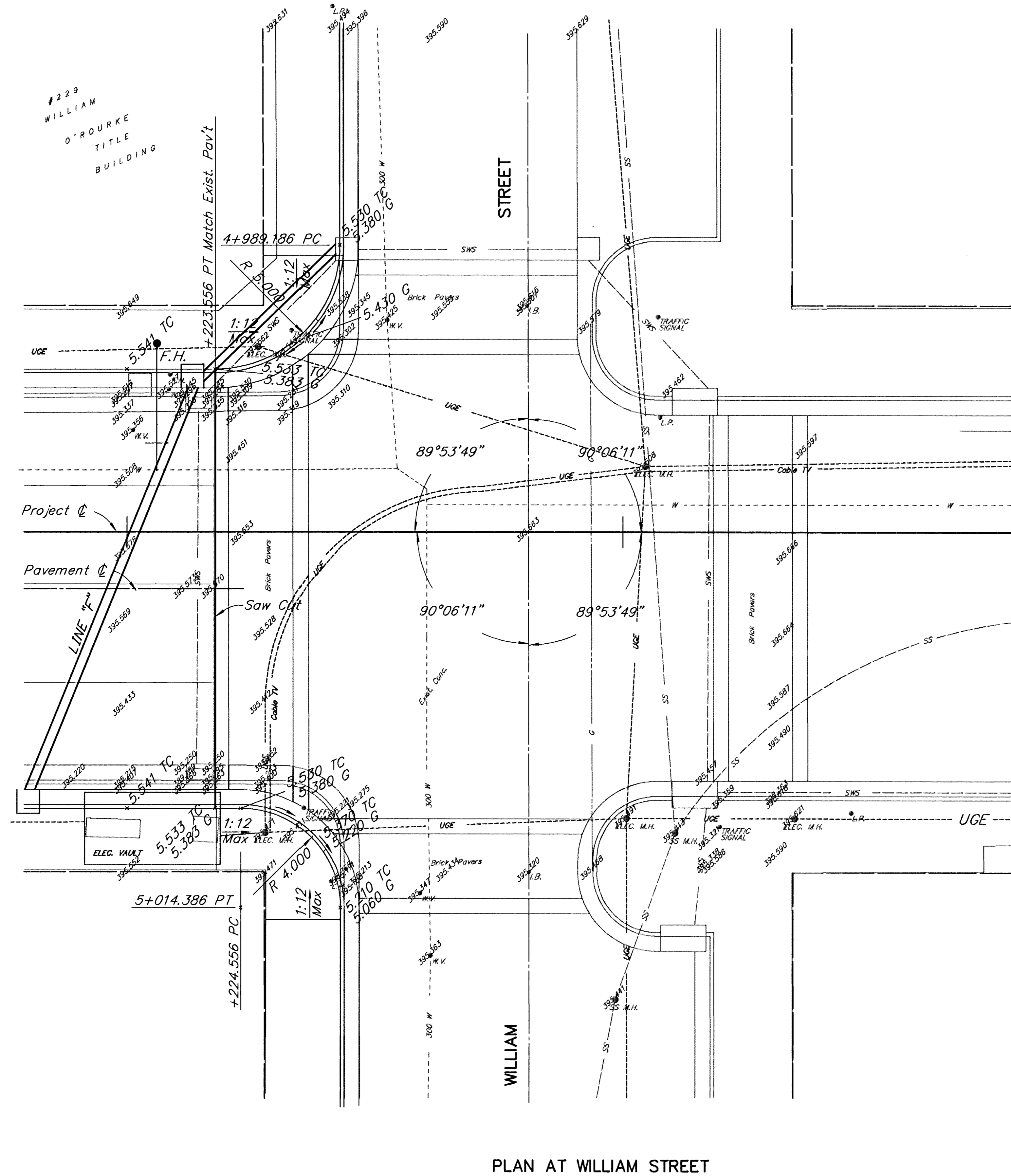


FHWA REGION NO.	STATE	PROJECT NO.	YEAR	SHEET NO.	TOTAL SHEETS
7	KANSAS	87 N-0061-01	1998	11	91

Last Plot-Date: 05/28/98 Plot-Time: 7:06 A.M.

SURV. PLOT CADD DES. DR. TR. CKD. APP.

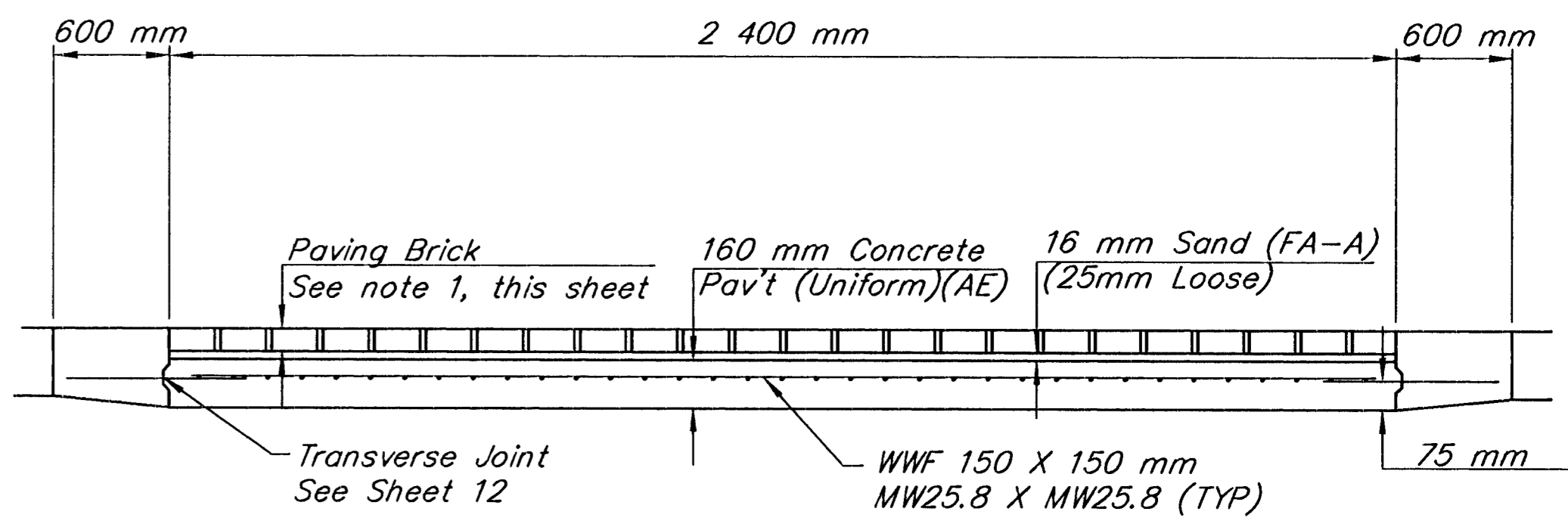
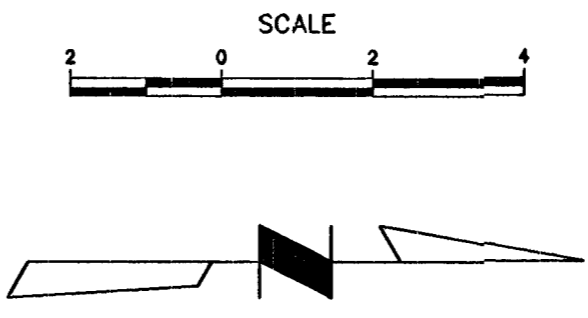


PLAN AT WILLIAM STREET

PAVING BRICK CROSS-WALK DETAILS

GENERAL NOTES:

- PAVING BRICK**
Use paving brick similar to that which is existing at cross-walks on William and Broadway. Paving Brick (ASTM -C936-82) used shall be Holland Stone Style consisting of full stones (200 mm X 100 mm X 80 mm), as manufactured by Barbour Concrete Pavers Inc., Independence Missouri (816-796-3344) or approved equal. Color to match existing pavers at Broadway and William Streets.
- 100 mm Reinforced Concrete Base, 16 mm sand base as well as paving brick shall be paid for under bid item 'Paving Brick'.
- This reinforcement to be placed in concrete panels adjacent to brick crosswalk and is Subsidiary to PAVING BRICK.
- Additional work involved in forming pavement for Paving Brick will be Subsidiary to the bid item PAVING BRICK.



PAVING BRICK TYPICAL DETAIL

F:\K9542\INTERC SCALE 1"=100'

CITY OF WICHITA	
INTERSECTION DETAIL WILLIAM STREET	
SCALE Noted	DATE
DWS. NO. K9542	