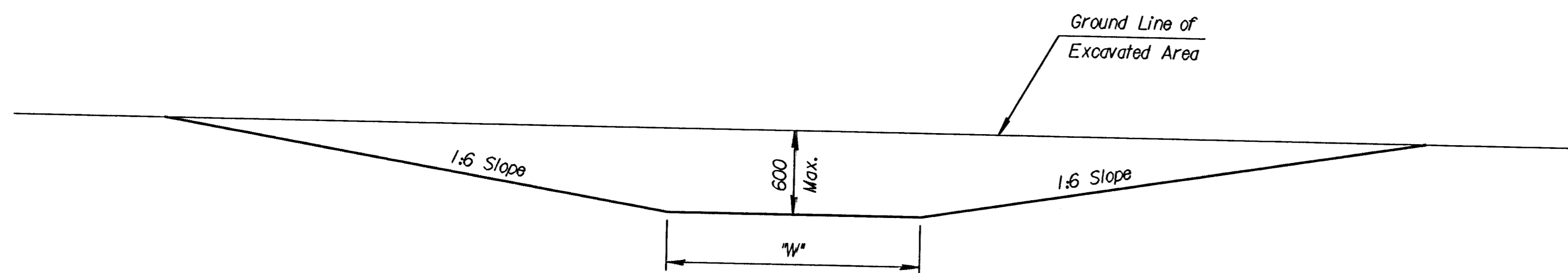
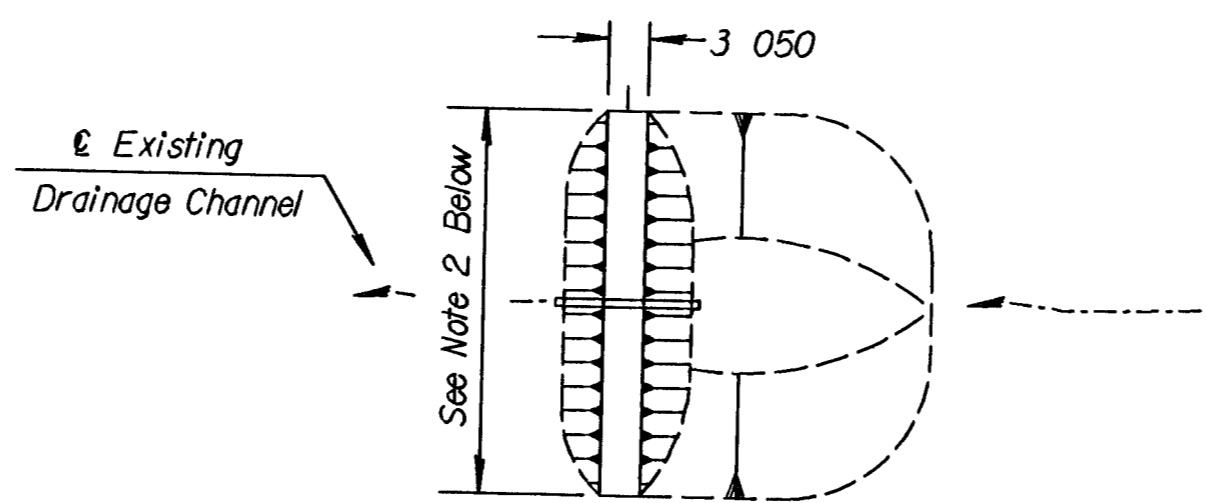


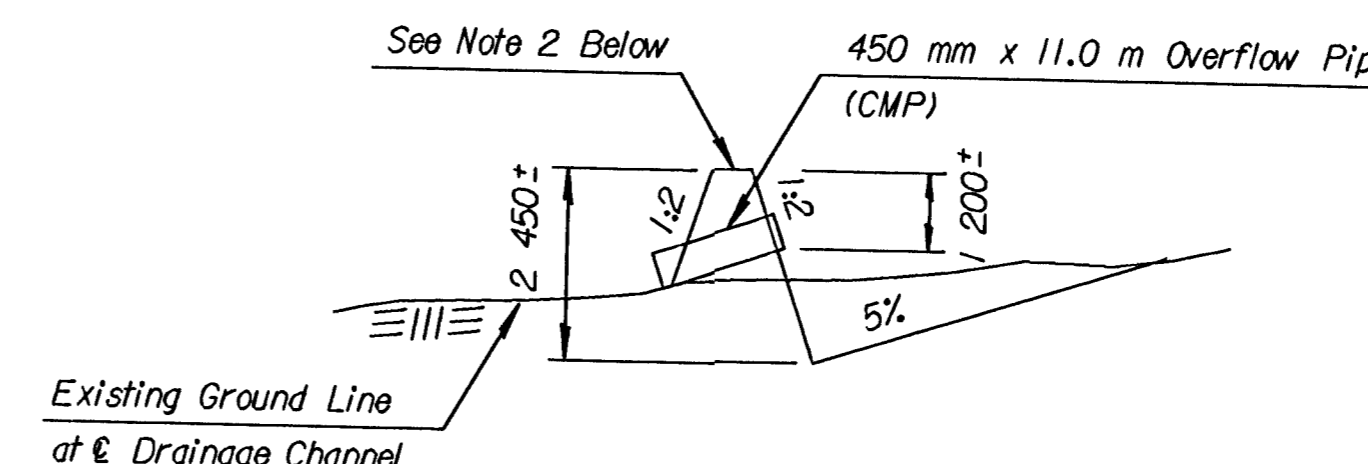
TYPICAL SECTIONS OF GRADIENT TERRACES



TYPICAL SECTION OF OUTLET DITCH



PLAN



PROFILE

TEMPORARY SEDIMENT BASIN

NOTES:

1) Temporary Sediment Basins shall be constructed at locations as directed by the Engineer. All work and materials necessary for the construction of Temporary Sediment Basins shall be paid for as the bid item "Temporary Sediment Basin". The 450 mm x 11.0 m overflow pipe will be SUBSIDIARY to the bid item "Temporary Sediment Basin". The Temporary Sediment Basins shall be removed by District forces after seeding has been established if desired by the respective land owners.

2) Lengths and top elevations shall be determined in the field by the Engineer.

Slope %	Vertical Interval (Millimeters)	Horizontal Spacing (Meters)
1	800	81
2	1,000	50
3	1,200	40
4	1,400	35
5	1,600	32
6	1,800	30
7	2,000	29
8	2,200	27

GENERAL NOTE

Terraces generally will not be required where the slope of the area is less than 3 percent. They shall be constructed on areas or portions of areas as designated by the Engineer.

Terraces shall be made as nearly parallel as practicable. Gradients for terraces shall vary from 0.1 percent at upper end to 0.4 percent at lower end or a uniform grade may be used.

Outlet ditches shall be constructed at locations best suited to empty into a natural stream bed, or if this is not possible, into a road ditch or channel where erosion can be minimized.

NOTE:
All dimensions are approximate.

Drainage Area above Dt./Hectares	Value of "W" for various % of Ditch Grades					
	3%	4%	5%	6%	7%	8%
1-2	2 400	2 400	2 400	2 400	3 600	4 200
2-3	2 400	2 400	2 400	3 000	3 600	4 800
3-4	2 400	2 400	2 400	3 000	3 600	4 800
4-6	2 400	2 400	2 400	3 000	4 200	5 400
6-7	2 400	2 400	2 400	3 600	4 200	6 000
7-8	2 400	2 400	2 400	3 600	4 200	7 200

NO.	DATE	REVISIONS	BY	APP'D
4	12/05/97	Revised Pipe Size at Temp. Sed. Bas.	WCL	RDR
3	3/17/97	Revised Note for Temp. Sed. Basin	WCL	RDR
2	7-5-95	Convert to SI	WCL	RDR
1	2-14-95	Revised Note for Temp. Sed. Basin	WCL	RDR

KANSAS DEPARTMENT OF TRANSPORTATION

TEMPORARY PROJECT WATER POLLUTION CONTROL (SOIL EROSION)

DESIGNED	WCL	DATE	12/16/97	APP'D	Richard D. Ross
DESIGN CR.	RDR	DETAIL CR.	RDR	QUAN. CR.	TRACED DAK
					TRACE CR. WCL

Drawn By: \$\$\$USERNAME\$\$\$
 DGN File: \$\$\$DGNFILE\$\$\$
 Plotted: \$\$\$STRTIME\$\$\$ View= PLOT 1