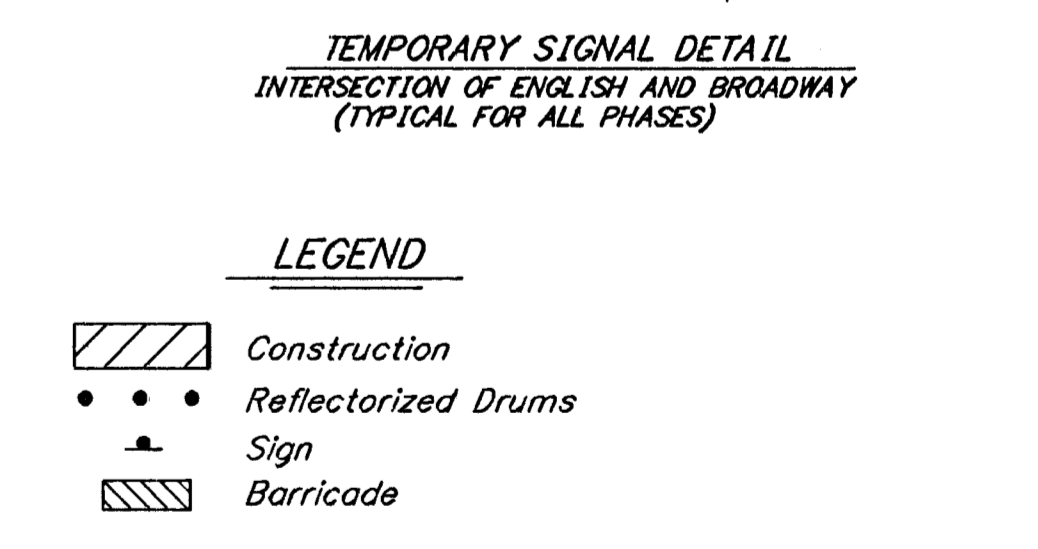
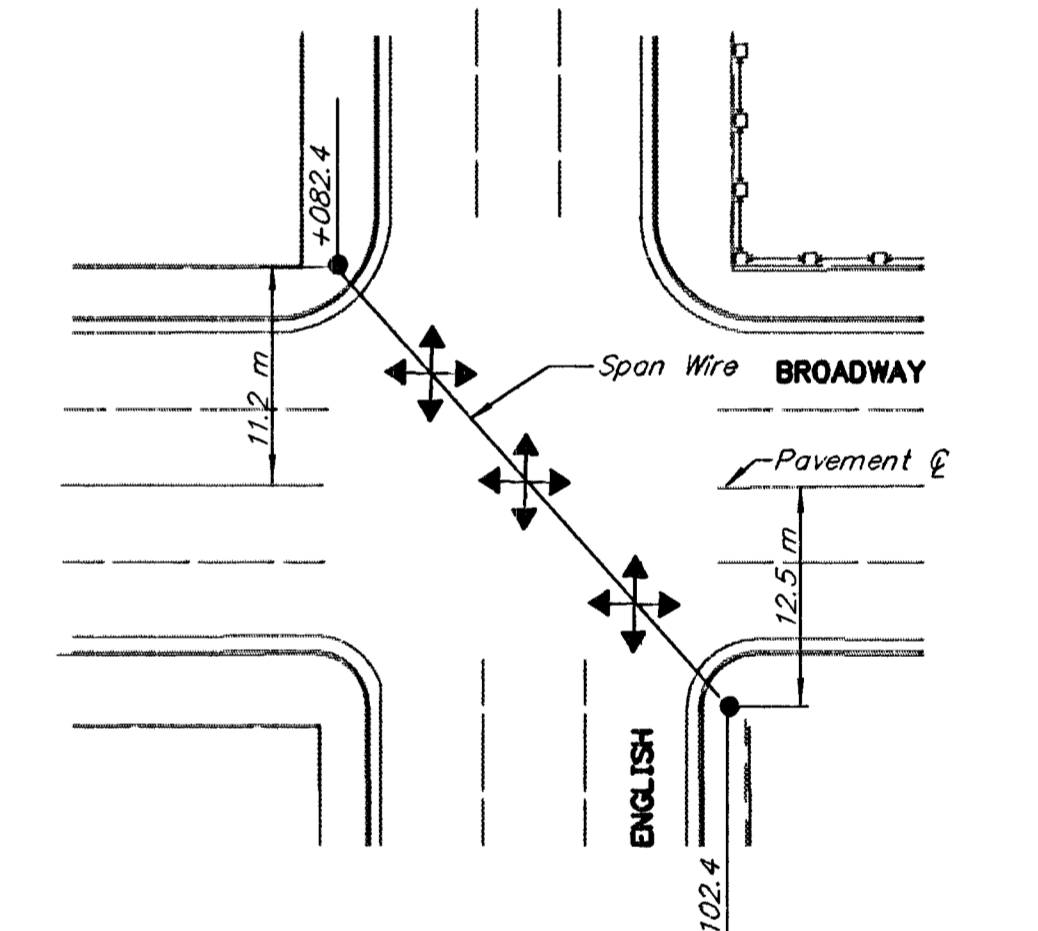
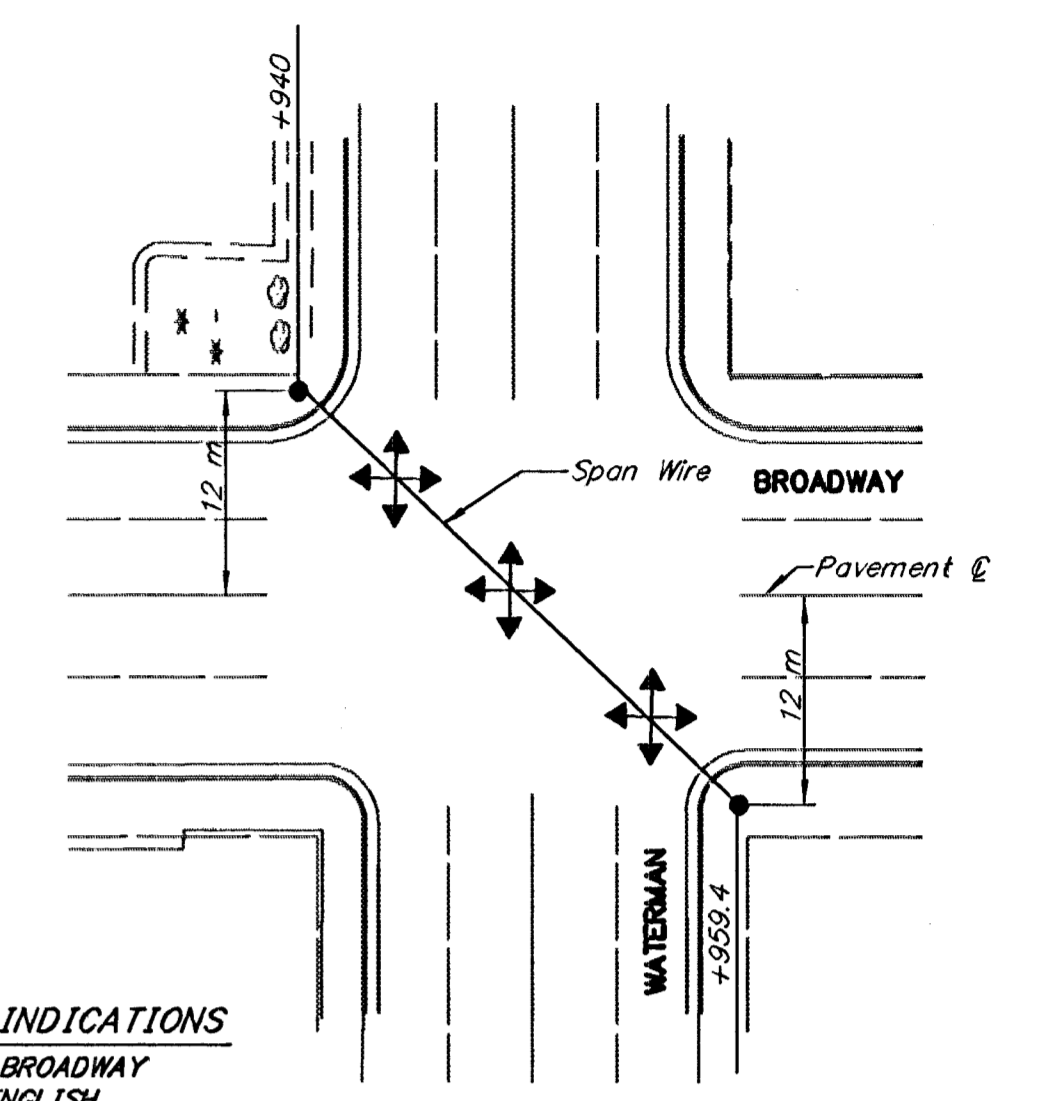
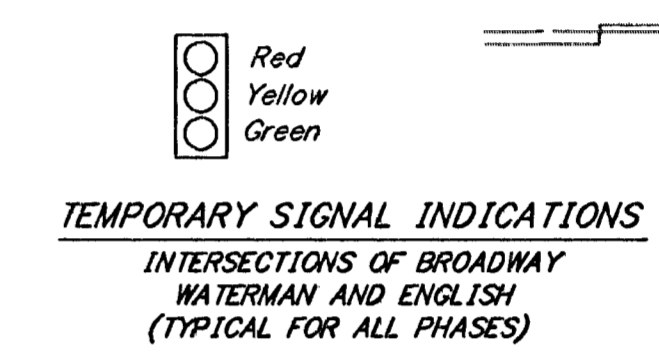
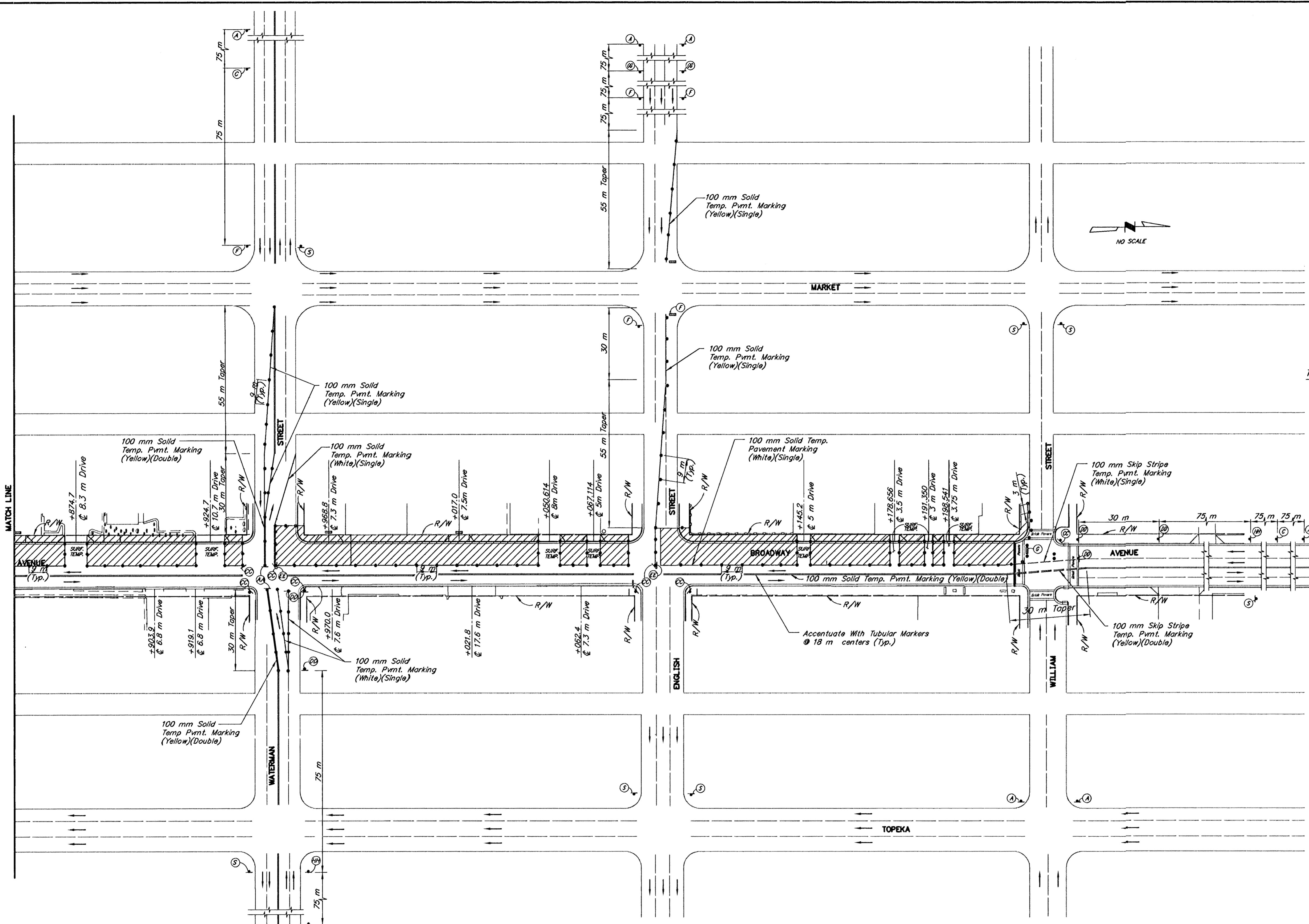


FHWA REGION NO.	STATE	PROJECT NO.	YEAR	SHEET NO.	TOTAL SHEETS
7	KANSAS	87N-0061-01	1998	72	91

SURV. PLOT CADD DES. KEM DR. VLW TR. CKD. KEM APP. Last Plot-Date: 05/10/95 Plot-Time: 10:20 A.M.



TEMPORARY SIGNAL GENERAL NOTES

- All wiring installed shall conform to the National Electrical Code and local ordinances and requirements.
- All signal cable, communications cable and feeder runs to be carried overhead on span wire across roadways or in conduit under the roadways.
- The operation and maintenance of the signal systems shall be the responsibility of the Contractor.
- All signal indications, clearances, and sequences shall be in accordance with the current M.U.T.C.D.
- The span wire signal heads shall be centered over the exit lanes.
- The temporary traffic signals shall be switched on during an off-peak hour. When switching signals, flaggers will be required. Temporary Signal Timing shall be the same as current timing.
- The terminal blocks shall be in a weatherproof enclosure.
- All necessary signal head, controller and pole relocations, whether specifically mentioned or not, shall be the Contractor's responsibility.
- Traffic signal heads which are in place and not in use during a specific step shall be removed, or covered with an opaque material.
- Signal phasing and timing shall be set as directed and approved by the Engineer-in-Charge of construction.
- Each intersection shall have a signal controller capable of a standard eight phase operation, with green intervals settable from 0 to 255 seconds.
- The traffic signal controller must be capable of storing a minimum of three separate phasing/timing plans, which can be selected on a time-of-day basis.
- In case of signal malfunction, the Contractor must respond within one hour.

See Sheet 83 for typical installation detail.

Note: At all intersections, shift Traffic Control to other quadrant upon completion of first quadrant.
Use Sidewalk Closed signs as necessary at all intersections affected by construction.
See Sheets 79 & 80 for identification of signs for handling traffic through construction.
See Sheet 80 for summary of devices and recapitulation of quantities.

KANSAS DEPARTMENT OF TRANSPORTATION
TRAFFIC CONTROL
PHASE 1A