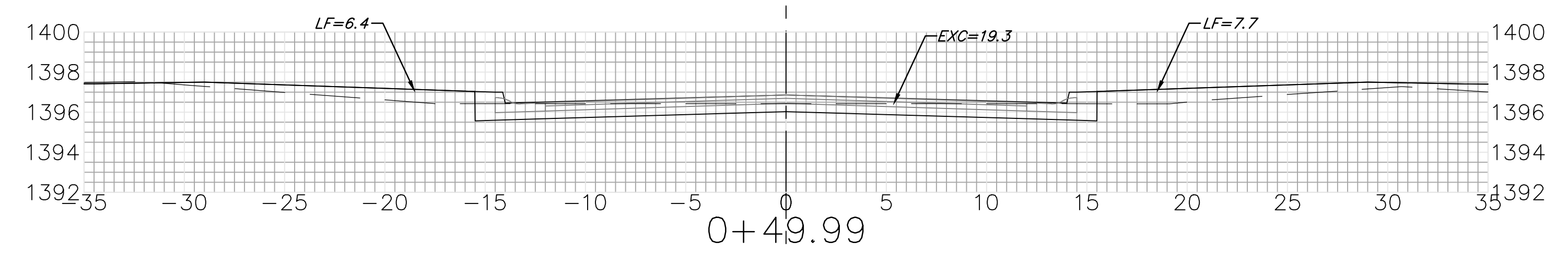
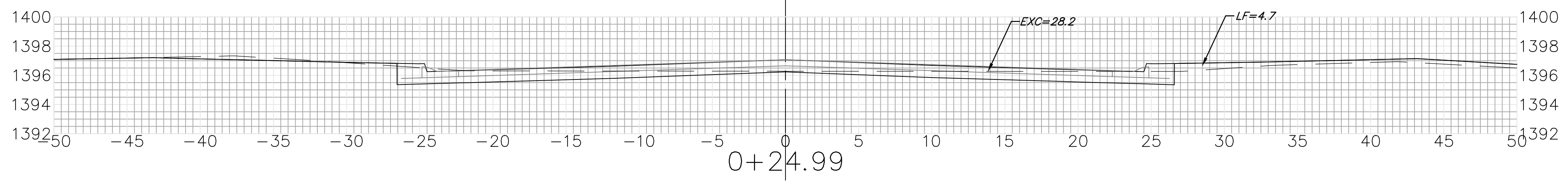


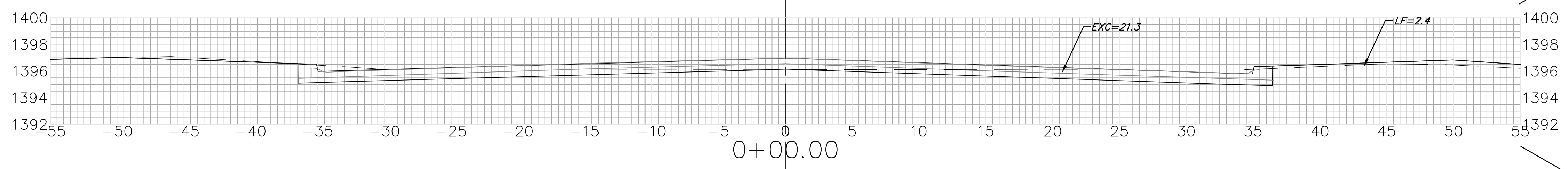
50.01'  $\begin{matrix} EXC = 33.7 \\ LF = 22.1 \\ CF = 0.0 \end{matrix}$



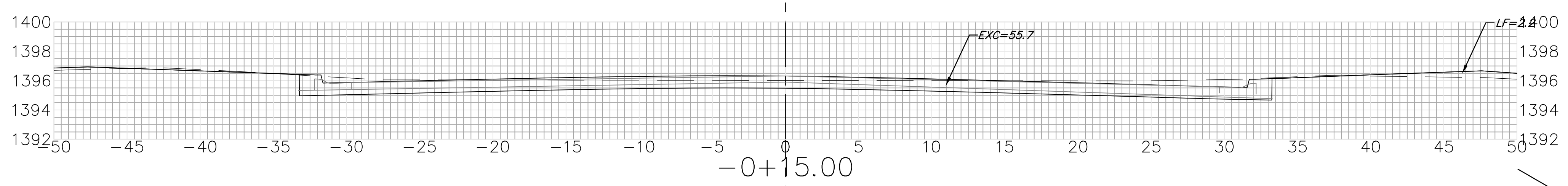
25.00'  $\begin{matrix} EXC = 22.0 \\ LF = 8.7 \\ CF = 0.0 \end{matrix}$



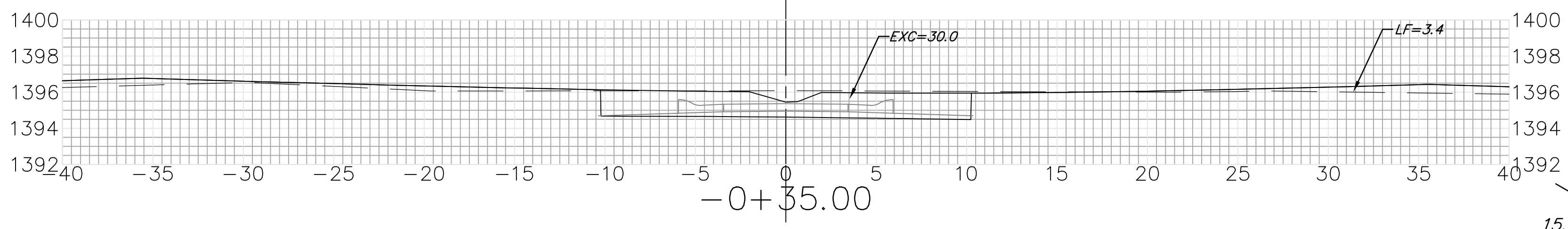
24.99'  $\begin{matrix} EXC = 22.9 \\ LF = 3.3 \\ CF = 0.0 \end{matrix}$



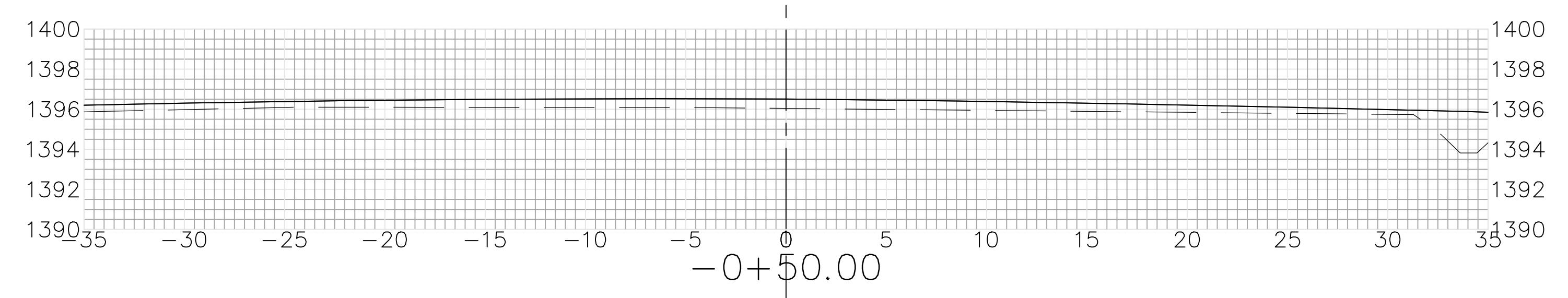
15.00'  $\begin{matrix} EXC = 21.4 \\ LF = 4.3 \\ CF = 0.0 \end{matrix}$



20.00'  $\begin{matrix} EXC = 31.7 \\ LF = 2.1 \\ CF = 0.0 \end{matrix}$



15.00'  $\begin{matrix} EXC = 8.3 \\ LF = 0.9 \\ CF = 0.0 \end{matrix}$



WOODSPRING CIR.  
Q

Sheet Totals  
Excavation = 140.0 C.Y.  
Loose Fill = 41.4 C.Y.  
Compacted Fill = 0.0 C.Y.

**BAUGHMAN COMPANY**

315 Ellis St.  
Wichita, KS 67211  
316-262-7271  
BaughmanCo.com

FIREFLY WAY ADDITION  
Phase 5

**CROSS SECTION**

STORM WATER SEWER IMPROVEMENTS

PROJECT NUMBER:  
20-06-E608

DESIGN: AEG DRAWN: TMS  
DATE: May 2, 2021

SHEET **23** OF **28**

File: E:\Projects\Firefly Way-Ritchie\_16-04-P195\Engineering\Phase 5\STWS\STRSws.dwg