

GRADING NOTES:

1. GENERAL CONTRACTOR SHALL PROVIDE AND SPREAD MIN. OF 4" OF TOPSOIL IN ALL PLANTING BEDS.
2. ROUGH GRADING IS RESPONSIBILITY OF EARTH WORK CONTRACTOR. FINE GRADING SHALL BE PERFORMED BY LANDSCAPE CONTRACTOR.

SITE SURVEY BY:

MID-KANSAS ENGINEERING CONSULTANTS INC.
3500 NORTH ROCK ROAD, BUILDING #200
WICHITA, KS 67226

DRAWING LABELED: CORE AREA PARKING LOTS, JOB #30235-2
DATE: APRIL 05 1994

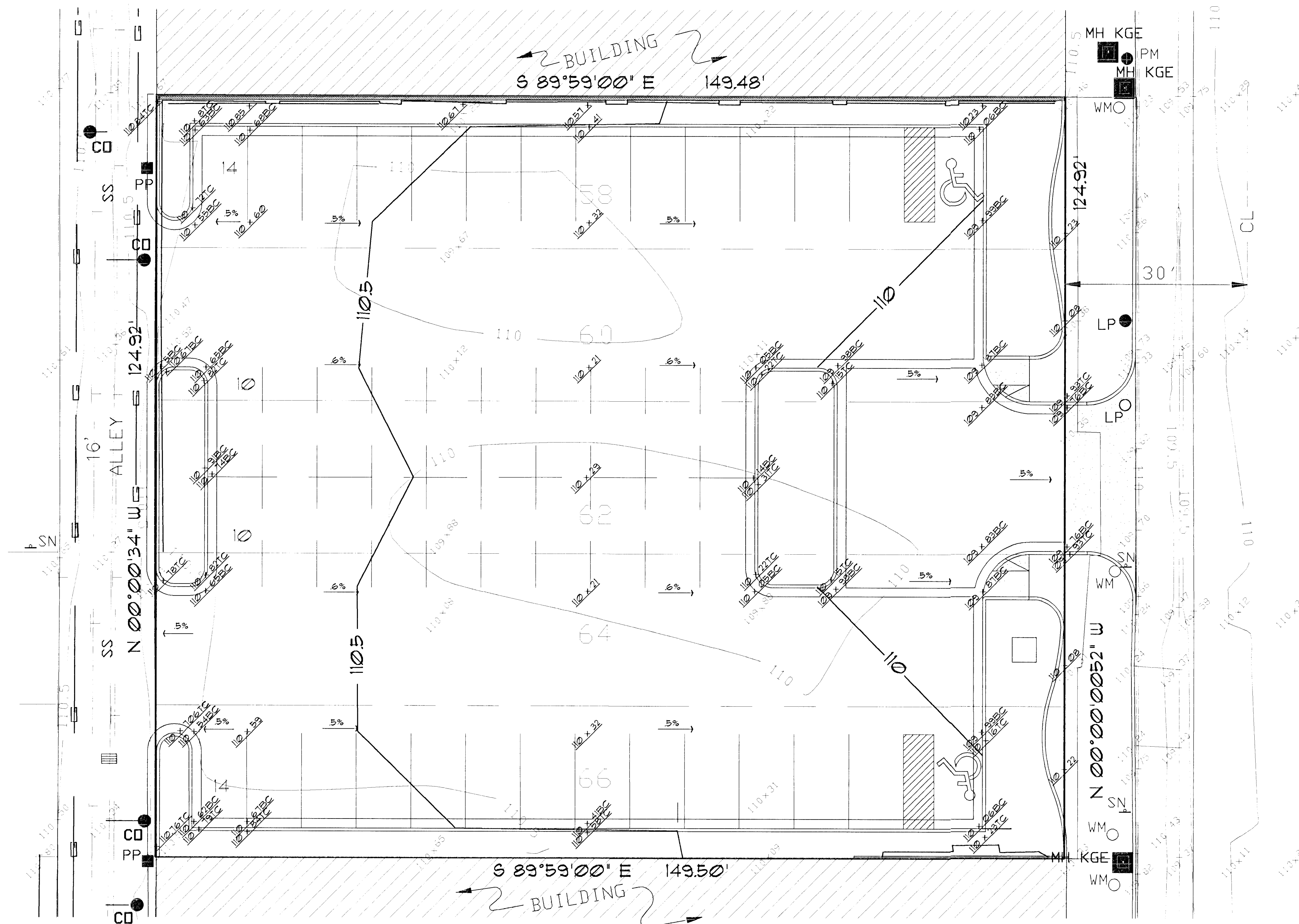
BENCH MARK:

BM-1: 1' x 1' CUT ON SW CORNER OF SIGNAL POLE BASE ON THE NE CORNER OF MARKET AND WATERMAN STREETS. ELEV. + 110.21

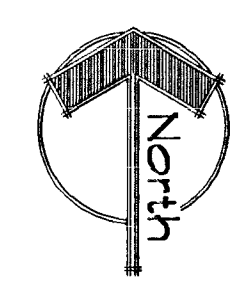
BM-2: 1' x 1' CUT ON SE CORNER OF SIGNAL POLE BASE ON THE SE CORNER OF BROADWAY AND ENGLISH STREETS. ELEV. + 110.93

GRADING LEGEND:

- SPOT ELEVATIONS
- NEW
- EXISTING
- NEW CONTOUR LINE, ONE FOOT HORIZ. INTERVAL
- POINT OF CONNECTION TO EXISTING CONTOUR LINE
- EXISTING CONTOUR LINE, HALF FOOT INTERVAL
- DIRECTION AND SLOPE OF SURFACE DRAINAGE



BROADWAY AVE.

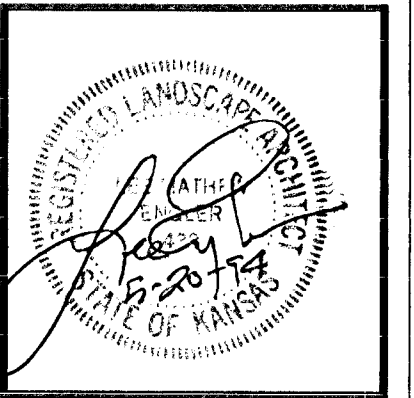


SITE GRADING PLAN

SCALE: 1" = 10'-0"

Wilson Darnell Mann PA
 architecture
 105 N. Washington
 Wichita, Kansas 67202 316-262-4700

site planning
 interiors
 Wichita, Kansas 67202 316-262-4700



COPYRIGHT © 1993
Wilson Darnell Mann, PA

prints issued
5-11-94 FIELD CHK

WDA no. 94002
drawn LME check

**319 & 325 BROADWAY
PARKING LOT**
 319 & 325 BROADWAY
 WICHITA, KANSAS

SITE GRADING
PLAN

SA-2
 of