

STATE OF KANSAS

DEPARTMENT OF TRANSPORTATION



PLAN AND PROFILE OF PROPOSED FEDERAL AID PROJECT

PROJ. #472-83393 OCA #706819

CENTRAL & ROCK INTERSECTION

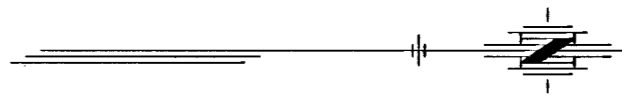
WICHITA, SEDGWICK COUNTY

POPULATION: 310,238

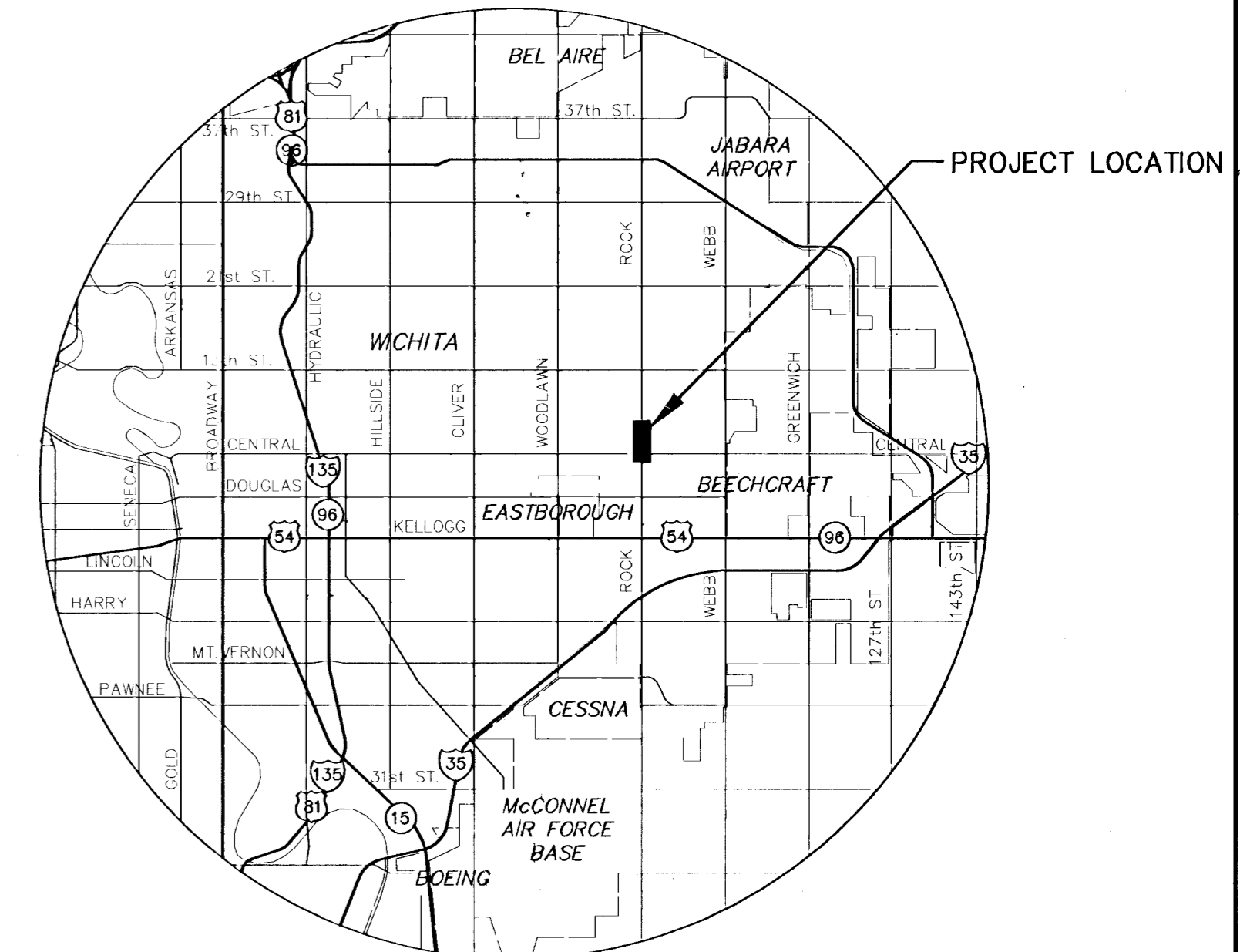
FHWA REG. NO.	STATE	PROJECT NO.	YEAR	SHEET NO.	TOTAL SHEETS
7	KANSAS	87N-0196-01	2001	1	55

PROJ. NO. 87N-0196-01
STP - N019(601)

- GRADING
- SURFACING
- STORM SEWER
- PAVEMENT MARKING
- SIGNING
- SIGNALIZATION



SCALE 1 : 2 000



LOCATION MAP

NOTE: Traffic to be carried through construction. Refer to Traffic Control sheets.



PREPARED & SUBMITTED BY

MKEC ENGINEERING CONSULTANTS, INC.
WICHITA, KANSAS

All Dimensions shown, without a SI suffix, are in millimeters. All elevations shown are in meters.

RECOM. FOR APPROVAL-DATE

CHIEF, BUREAU OF LOCAL PROJECTS
KANSAS DEPARTMENT OF TRANSPORTATION

APPROVED - DATE

STATE TRANSPORTATION ENGINEER
KANSAS DEPARTMENT OF TRANSPORTATION

INDEX OF SHEETS

SHEET NO.	DESCRIPTION
1	Title Sheet
2-6	Typical Paving Sections
7-11	Rock Road Plans Sheets
12	Central/Rock Intersection Plan
13-17	Paving Details
18	Misc. Details
19-20	Retaining Wall Plans/Profiles
21	Storm Sewer Plan/Profile
22-26	Storm Sewer Details
27	Water Replacement Plan/Profile
28	Water Details
29	Summary of Quantities
30-33	Signalization Plans
34-36	Pavement Marking Plans
37	Construction Staging
38-44	Traffic Control
45-55	Paving Cross Sections

DATE	BY
	SURVEYED
	CAD TECHNICIAN
	DESIGNERS
	SQUAD

DESIGN DESIGNATION

AADT (1999)	=	63,200.
AADT (2029)	=	79,900
DHV	=	6,300
D	=	60 %
T	=	3 %
V	=	60 km/h
Control of Access	=	None
Clear Zone	=	Varies

CONVENTIONAL SIGNS

COUNTY LINE	-----	CENTER LINE OF PROJECT	-----
CITY LIMITS	-----	TERRACE	-----
STATE OR NATIONAL LINE	-----	CULVERTS	-----
TOWNSHIP, SECTION or GRANT LINE	-----	DROP INLET & STORM SEWER	-----
PROPERTY LINE	-----	ACCESS CONTROL	-----
HIGHWAY FENCE	-----	POWER POLE	-----
EXISTING FENCE	-----	TELEPHONE POLE	-----
GUARD FENCE	-----	MARSH	-----
CONSTRUCTION LIMITS	-----	HEDGE	-----
RIGHT OF WAY LINE	-----	TREES	-----
TRAVELED WAY	-----	PROFILE ELEVATION	-----
RAILROADS	-----	STREAM or CREEK	-----

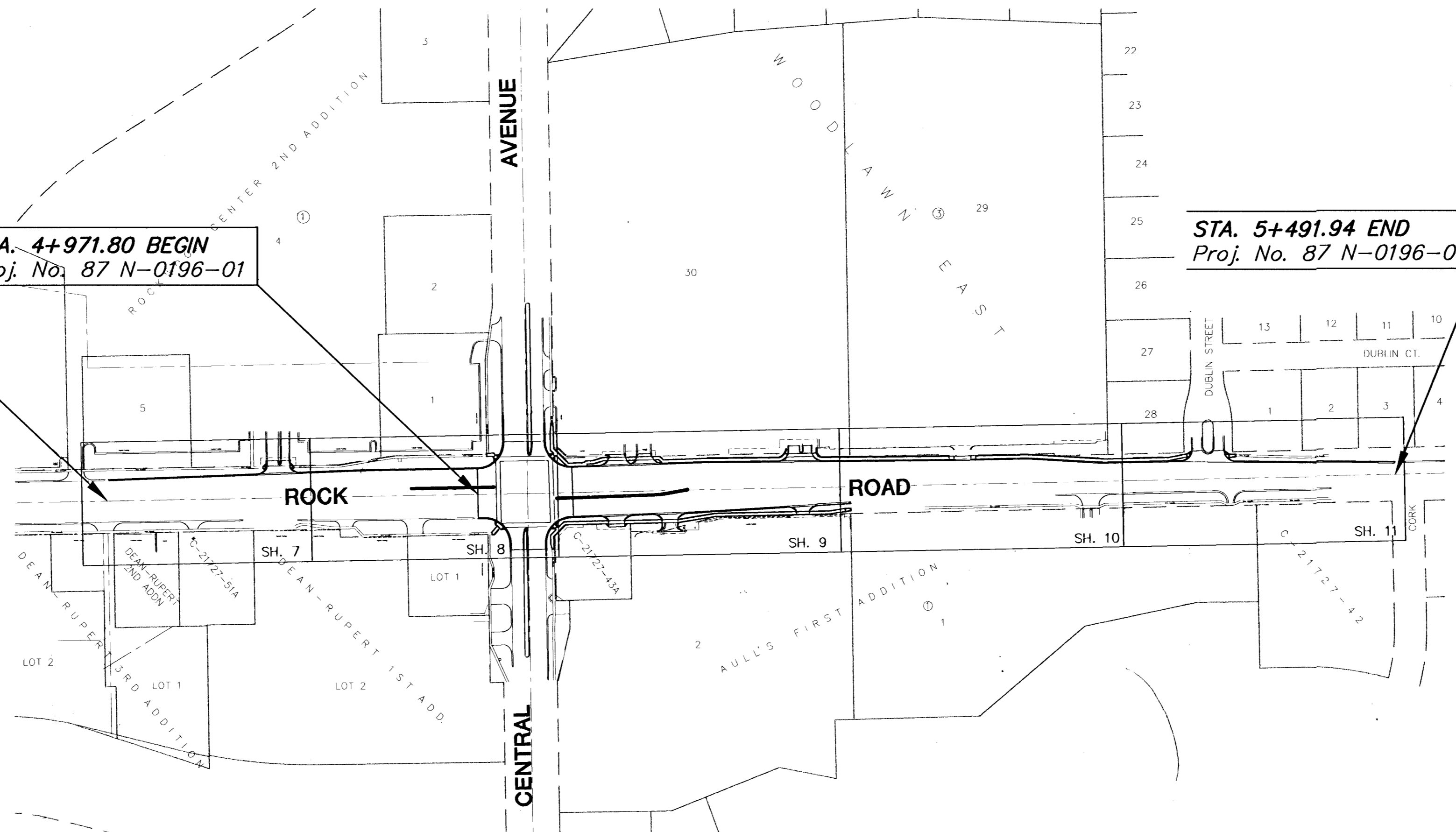
GROSS LENGTH OF PROJECT	729.310 m
EXCEPTIONS	0.000 m
ADDITIONS	0.000 m

NET LENGTH OF PROJECT	729.310 m
NET LENGTH OF BRIDGES	0.000 m
NET LENGTH OF ROAD	729.310 m



APPROVED - DATE

MICHAEL E. LINDEBAK
CITY ENGINEER
PROJECT NO. 87N-00196-01



STA. 4+762.63 BEGIN Construction

STA. 4+971.80 BEGIN Proj. No. 87 N-0196-01

STA. 5+491.94 END Proj. No. 87 N-0196-01