

GENERAL NOTES

The Contractor shall be responsible for preserving existing property irons shown on plans. The Contractor will be required to re-establish any shown property irons which are damaged or destroyed by his construction operations. Such irons shall be re-established at the Contractor's expense by a licensed land surveyor in accordance with state laws.

A licensed land surveyor shall take field ties to all quarter section corners. The Contractor shall set a city survey monument in the required location where such quarter section corners fall within the limits of pavement construction. Survey monuments will be furnished at no cost by the city. The surveyor will accurately locate and install the iron at the quarter section corner. This work shall be paid for under the contract unit price for monument box.

All construction staking shall be performed by the City of Wichita Public Works Department at no cost to the Contractor. The Contractor shall coordinate the survey staking with the City of Wichita Public Works Department and give the surveyor 24 hours notice when stakes are required.

Utility service lines, poles, valve boxes, meters, etc. are to be adjusted as necessary by others prior to construction unless the plans specifically call for their adjustment by the Contractor. Existing utilities and their location, as shown on the plans, represent the best information obtainable for design. Location information has been obtained from the various utility companies and is either from company record drawings or company provided field locations. The plan locations shown are not guaranteed. Additional existing utilities may also be encountered. The Contractor will be required to work around existing utilities within the right-of-way which do not conflict with proposed construction.

Install new standard manhole frames and covers on all existing storm water and sanitary sewer manholes located in new pavement. Old frames and covers shall be taken to the City Yard at 1801 S. McLean Blvd. for salvage. Sanitary sewer covers shall have the lettering "City of Wichita Sewer Dept". Storm water sewer covers shall have the lettering "City of Wichita Storm Water". Cost of Transporting frames and covers is "Non-Participating".

All borrow to be obtained from areas provided by the Contractor shall be approved by the Engineer, both as to suitability of material and site location. Locations which in the opinion of the Engineer, contain unsuitable material or will leave an unsightly appearance on the project will not be approved.

The Contractor shall adjust water valve boxes as directed by the Engineer at the price bid for said adjustments. The Water Department shall field locate water valves one time during construction when requested by the Contractor. It shall be the Contractor's responsibility to preserve such field locations during the construction process. Water valves or water valve boxes damaged during construction shall be repaired by the Contractor at his own expense.

Properties within the project may have underground irrigation systems (drippers, sprinklers, and valves) which conflict with new construction. Contractor shall remove such components as needed during construction of the project. The irrigation system shall be reinstalled in like kind before project completion. Any irrigation system modifications required because of project improvements shall be coordinated with the property owner. Portions of underground irrigation systems not in conflict with new construction shall be protected from damage and shall remain in place. All work related to underground irrigation systems shall be Non Participating.

All stationing, radii, pavement widths, offset distances, etc. are measured to the face of the curb and along the project baseline unless otherwise noted on the plans.

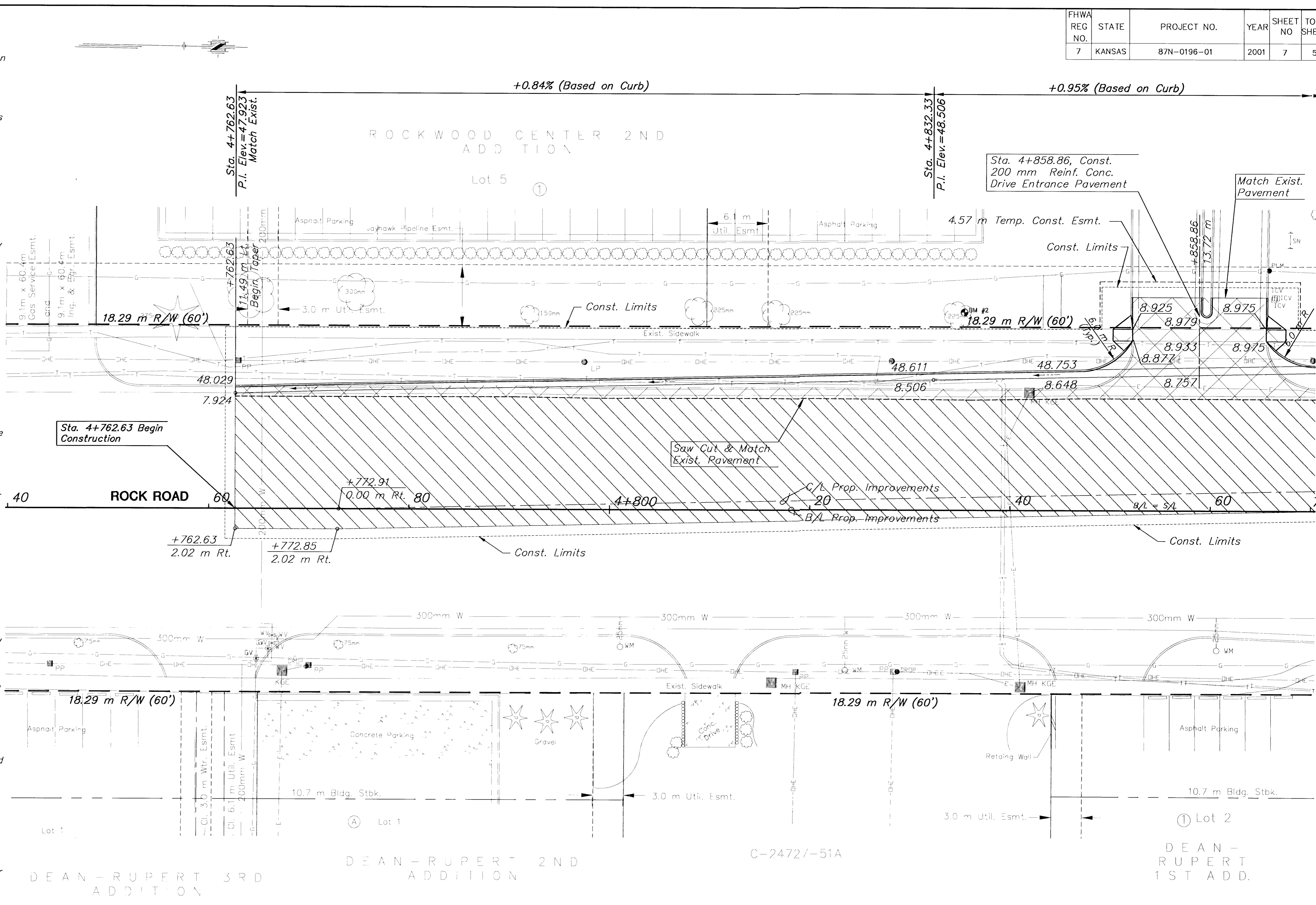
A full depth saw cut of the existing surface shall be provided at locations where proposed new construction abuts an existing concrete or bituminous surface for which at least partial removal of that surface is required. Saw cuts shall not be paid for directly, but shall be considered subsidiary to various surfacing items involved.

Trees in public right-of-way which are in direct conflict with proposed new construction shall be removed by the Contractor as approved by the Engineer. Trees 150 mm or smaller in diameter within 1.80 m behind the curb, shall be relocated at the direction of the Park Department. Cost subsidiary to Clearing Right-Of-Way.

Rubble from the removal of miscellaneous structures and excess excavation which is to be wasted shall be disposed of on sites to be provided by the contractor. These sites shall be approved by the Engineer as to suitability, appearance and site location. Locations that, in the opinion of the Engineer, will leave an unsightly appearance will not be approved. All disposal sites must be approved by the Kansas Department of Health and Environment. Material either stockpiled or disposed of in a flood plain would require a Kansas State Board of Agriculture permit. Any material buried or stockpiled beyond approved construction limits would require additional archeological investigations unless buried in a previously approved borrow location.

All regulatory signs, street names, stop sign, speed limit sign, etc. shall be removed and shall be taken to the City Yard at 1801 S. McLean Blvd. Cost for transporting the signs shall be Non Participating.

Elevations are City Datum (meters)



Utility Owners

Kansas Gas Service	383-8600
Southwestern Bell Telephone Company	1-800-734-7590
CATV: Cox Communications	263-2061
KG&E (Electric)	383-8600
City of Wichita Water & Sewer Maint.	262-6000
Jayhawk Pipeline	1-888-542-9575

BM #1 "□" Cut in South end Headwall of Box Culvert
Sta. 4+635.25
19.63 m Lt. Elev.=46.848

BM #2 "□" Cut in Base of Light Pole
Sta. 4+835.40
19.76 m Lt. Elev.=50.517

Legend:

- Milling & Overlay of Exist. Pavement
- Pavement, Driveway, and/or Sidewalk Removal

Scale: SCALE= 1:200

0 10 20

PLAN: Lat. & Long. (meters)

PROFILE: Horiz. same as above, Vert. 0 0.5

Revisions:

NO.	DATE	REVISIONS	BY	APP'D
2				
1				

KANSAS DEPARTMENT OF TRANSPORTATION

CENTRAL & ROCK INTERSECTION

STA. 4+740 TO STA. 4+870

PROJ. NO. 87N-0196-01 SEDGWICK CO.

MKEC ENGINEERING CONSULTANTS, INC.
WICHITA, KANSAS

DESIGNED BY: ASH CHECKED BY: GJA
DRAWN BY: DAG DATE: APRIL 2001 SHEET 7 OF 55

FHWA REG. NO.	STATE	PROJECT NO.	YEAR	SHEET NO.	TOTAL SHEETS
7	KANSAS	87N-0196-01	2001	7	55

DATE	BY	REFERENCES NOTED	REFERENCES CHECKED

H:\CIVIL\98166\METRIC\PAV\98166_E1.DWG F:\1 MAY 25 09:03:29 2001