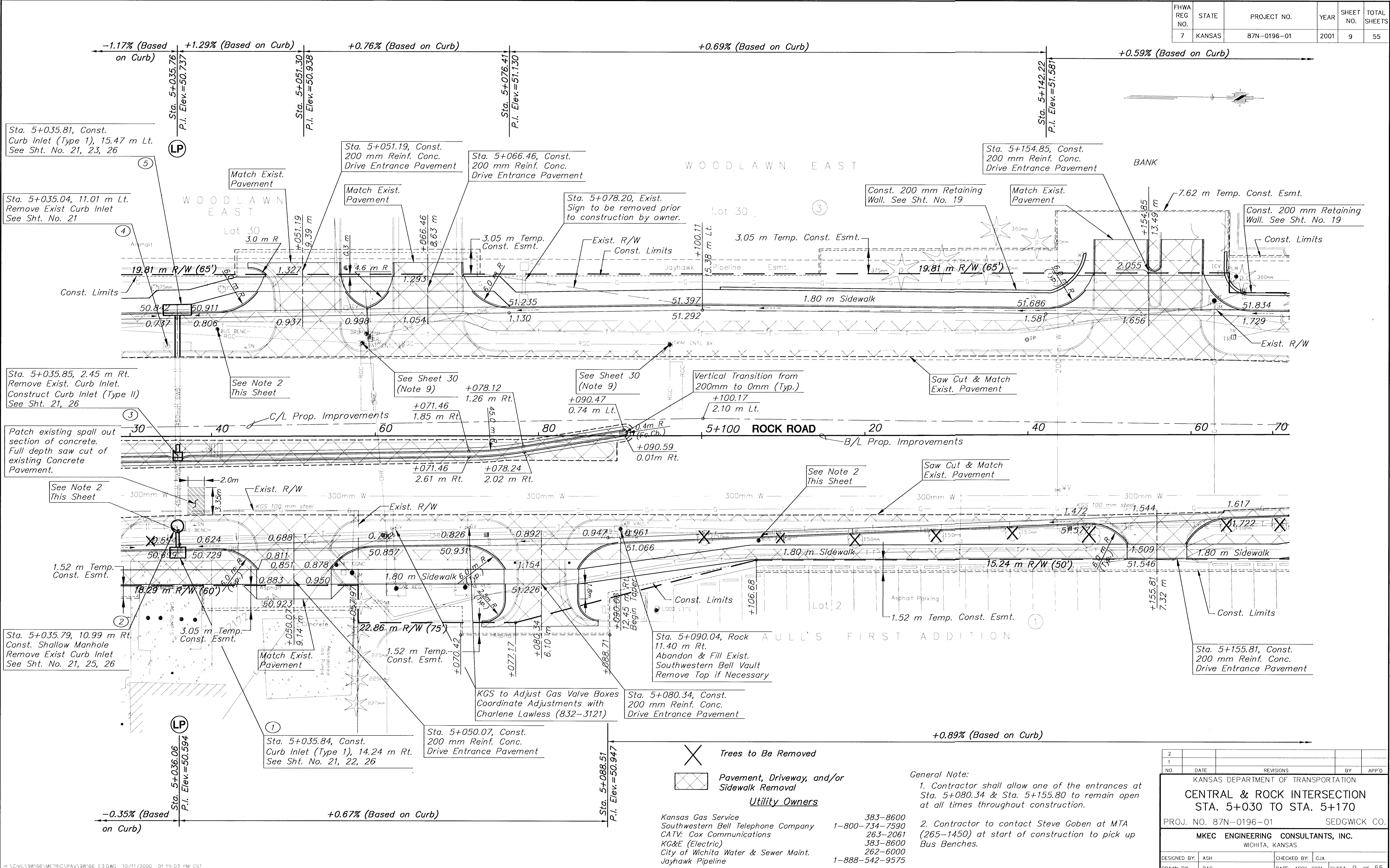


| | | | | | |
|---------------|--------|-------------|------|-----------|--------------|
| FHWA REG. NO. | STATE | PROJECT NO. | YEAR | SHEET NO. | TOTAL SHEETS |
| 7 | KANSAS | 87N-0196-01 | 2001 | 9 | 55 |

| | |
|--------------------|--|
| DATE | |
| BY | |
| REFERENCES NOTED | |
| REFERENCES CHECKED | |



- Trees to Be Removed
- Pavement, Driveway, and/or Sidewalk Removal
- Utility Owners

Kansas Gas Service 383-8600
 Southwestern Bell Telephone Company 1-800-734-7590
 CATV: Cox Communications 263-2061
 KG&E (Electric) 383-8600
 City of Wichita Water & Sewer Maint. 262-6000
 Jayhawk Pipeline 1-888-542-9575

General Note:
 1. Contractor shall allow one of the entrances at Sta. 5+080.34 & Sta. 5+155.80 to remain open at all times throughout construction.
 2. Contractor to contact Steve Goben at MTA (265-1450) at start of construction to pick up Bus Benches.

| NO. | DATE | REVISIONS | BY | APP'D |
|-----|------|-----------|----|-------|
| 2 | | | | |
| 1 | | | | |

KANSAS DEPARTMENT OF TRANSPORTATION
CENTRAL & ROCK INTERSECTION
STA. 5+030 TO STA. 5+170
 PROJ. NO. 87N-0196-01 SEDGWICK CO.
MKEC ENGINEERING CONSULTANTS, INC.
 WICHITA, KANSAS

| | |
|------------------|--------------------------------|
| DESIGNED BY: ASH | CHECKED BY: GJA |
| DRAWN BY: DAG | DATE: APRIL 2001 SHEET 9 OF 55 |

H:\CIVIL\98166\METRIC\PAV\98166_E3.DWG 10/11/2000 01:15:03 PM CST