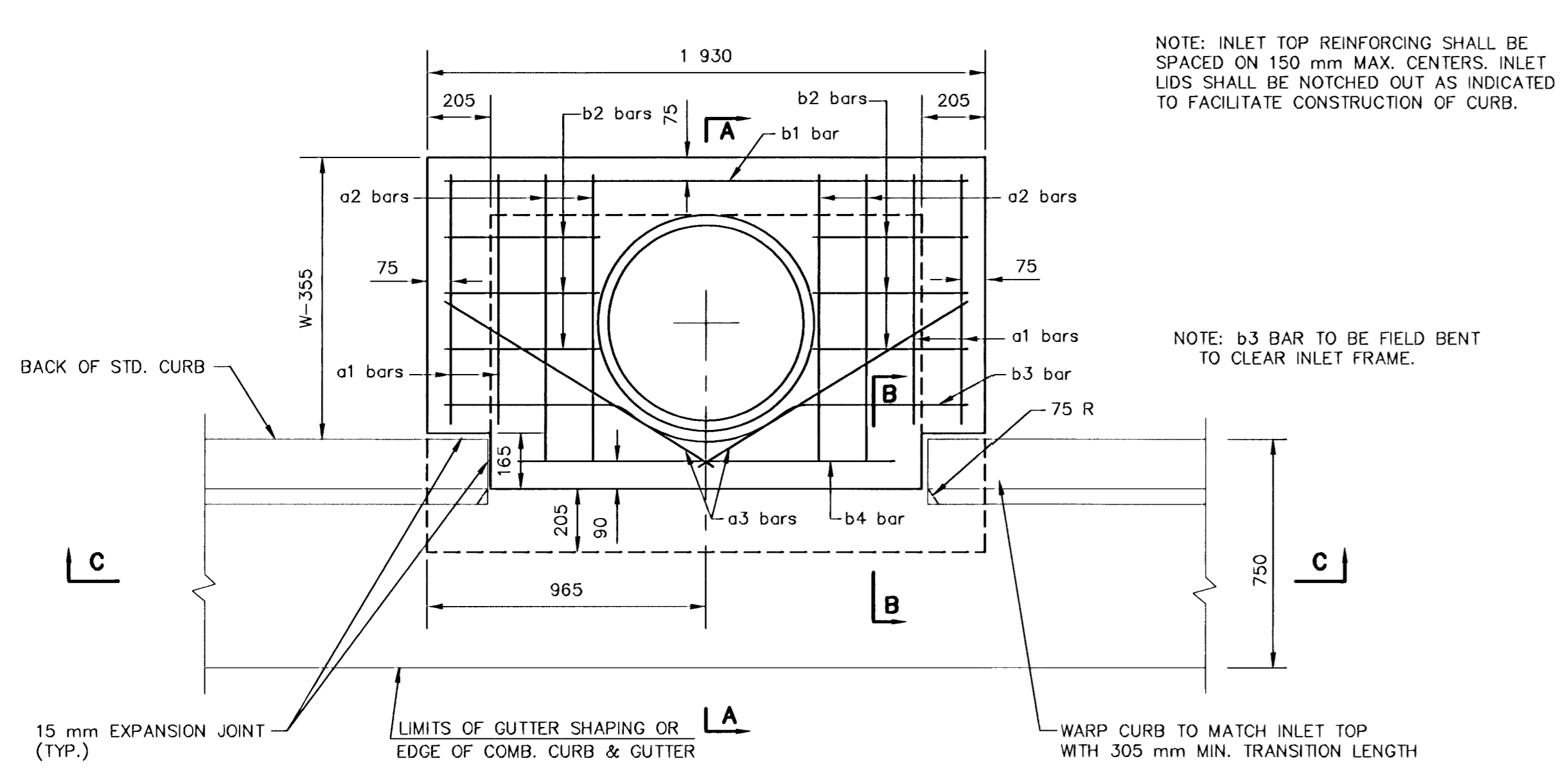
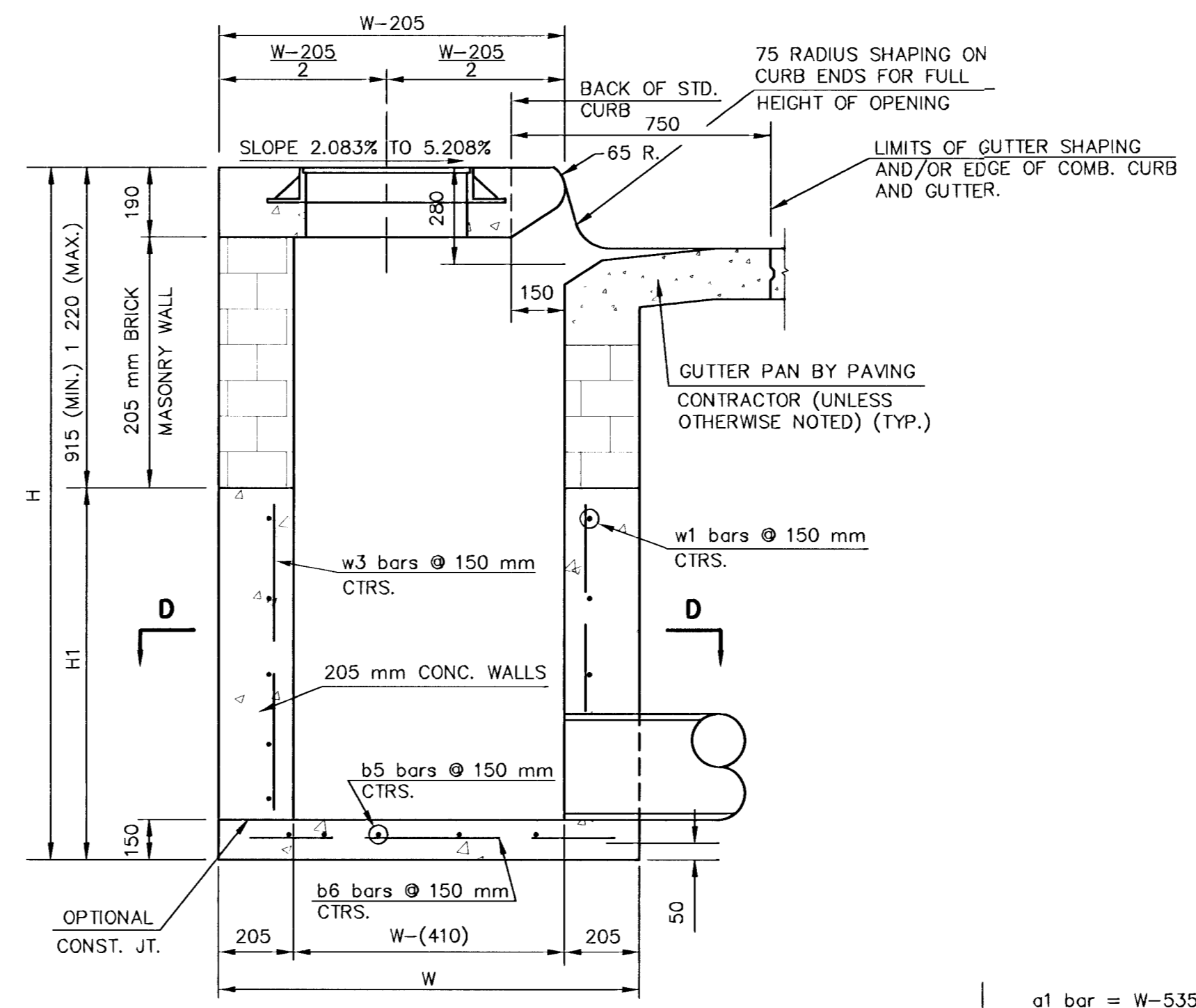


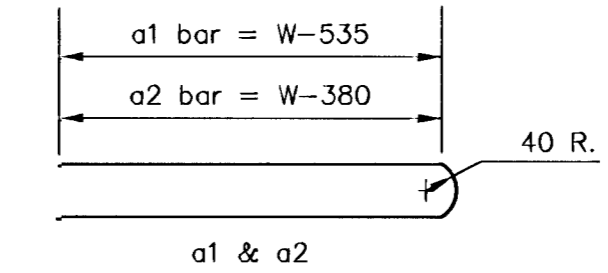
| FHWA REGION NO. | STATE | PROJECT NO. | YEAR | SHEET NO. | TOTAL SHEETS |
|-----------------|--------|-------------|------|-----------|--------------|
| 7 | KANSAS | 87N-0196-01 | 2001 | 22 | 55 |



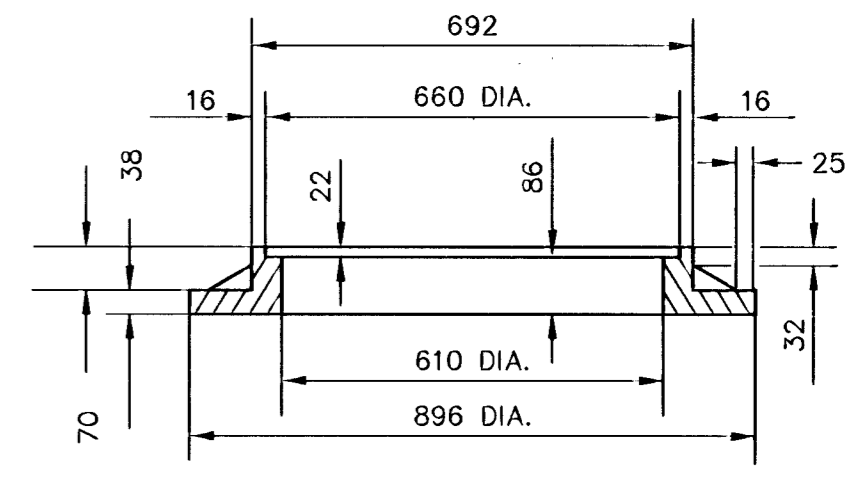
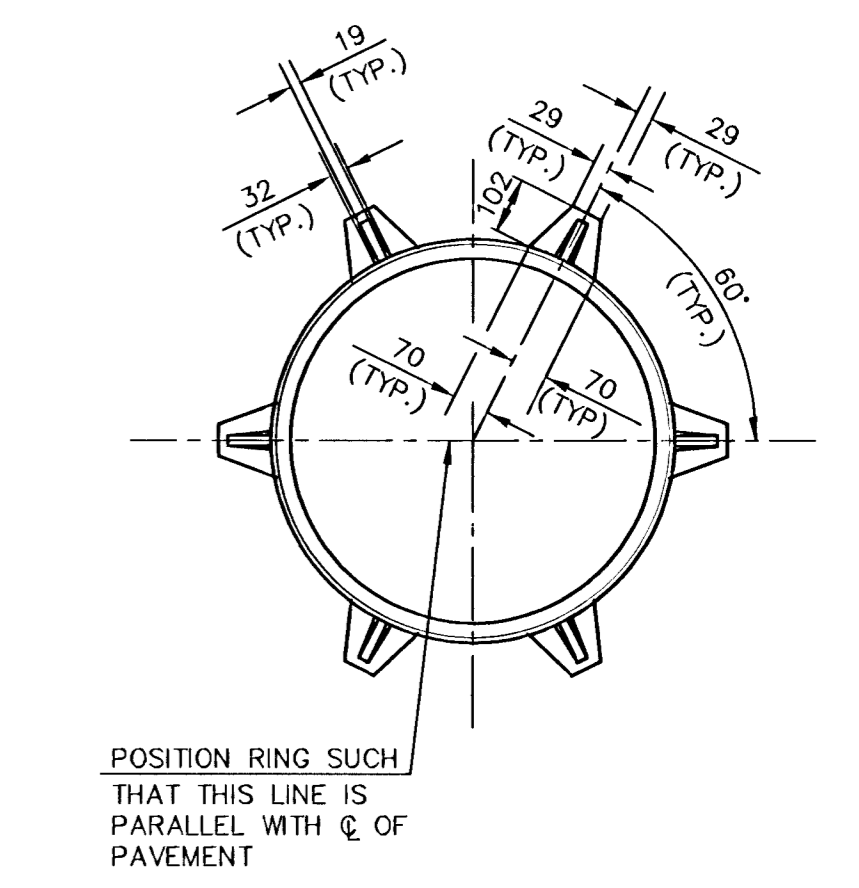
PLAN



SECTION A-A



BENDING DIAGRAM



INLET FRAME

SEE CITY OF WICHITA STANDARD MANHOLE FRAME AND COVER DETAIL SHEET FOR COVER DETAILS TO BE USED WITH INLET FRAME.

COVERS SHALL HAVE THE LETTERING "CITY OF WICHITA STORM WATER"

GENERAL NOTES

- CONCRETE SHALL BE C.O.W. STANDARD PAVING MIX. ALL EXPOSED EDGES SHALL BE FINISHED WITH AN EDGING TOOL. REINFORCING BARS SHALL BE FIELD BENT OR CUT TO CLEAR PIPES. ALL BARS ARE #13 BARS AT 150 mm SPACING AND SHALL HAVE A MINIMUM CLEARANCE OF 40 mm UNLESS OTHERWISE NOTED. FLOORS OF INLET SHALL BE SHAPED WITH 10.5 SACKS PER m³ SAND MIX CONCRETE TO INCREASE HYDRAULIC EFFICIENCY SUCH THAT THE INLET WILL BE SELF CLEANING BETWEEN ALL INLET AND/OR OUTFALL PIPE(S). THE CONTRACTOR WILL BE REQUIRED TO CONSTRUCT 205 mm BRICK MASONRY WALLS BETWEEN THE CONCRETE INLET BASE AND TOP ON THIS INLET WHEN H= 2 135 mm OR LESS AND W= 1 930 mm OR LESS.
- THE ENDS OF ALL PIPES INSTALLED IN INLETS SHALL BE CUT OFF FLUSH WITH THE INSIDE FACE OF THE INLET WALL.

REVISED: 12-21-1984

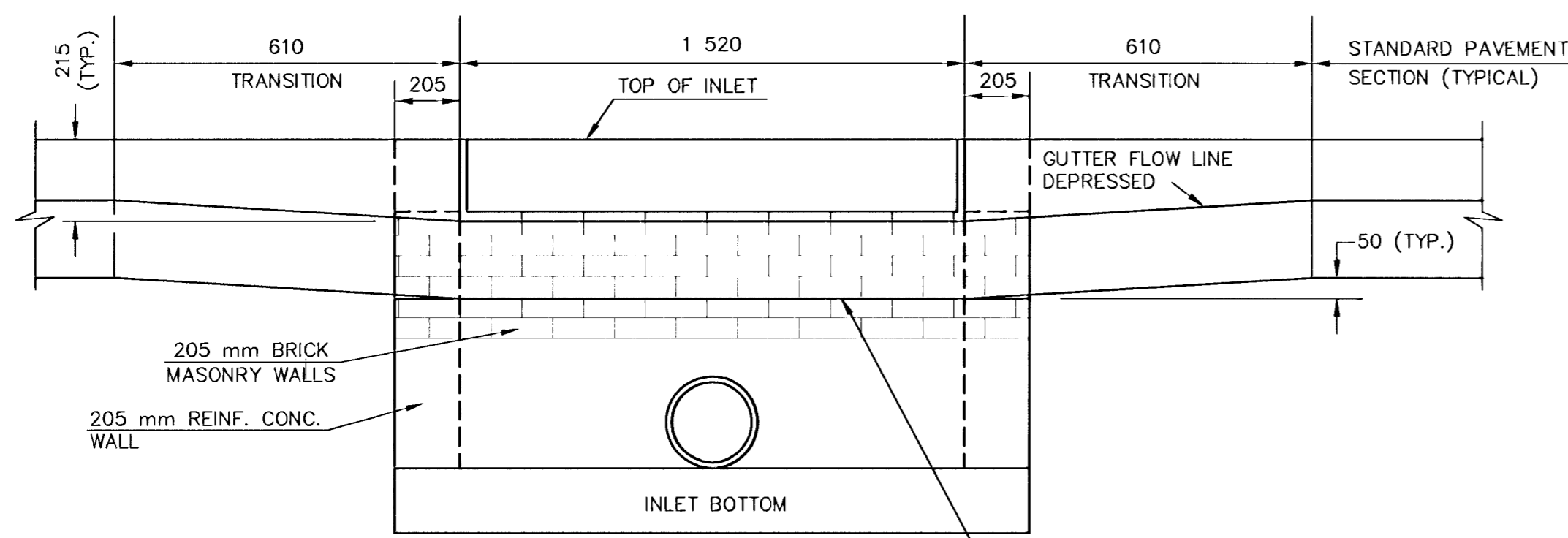
STANDARD TYPE 1 CURB INLET

INLET OPENING=150 x 1 520

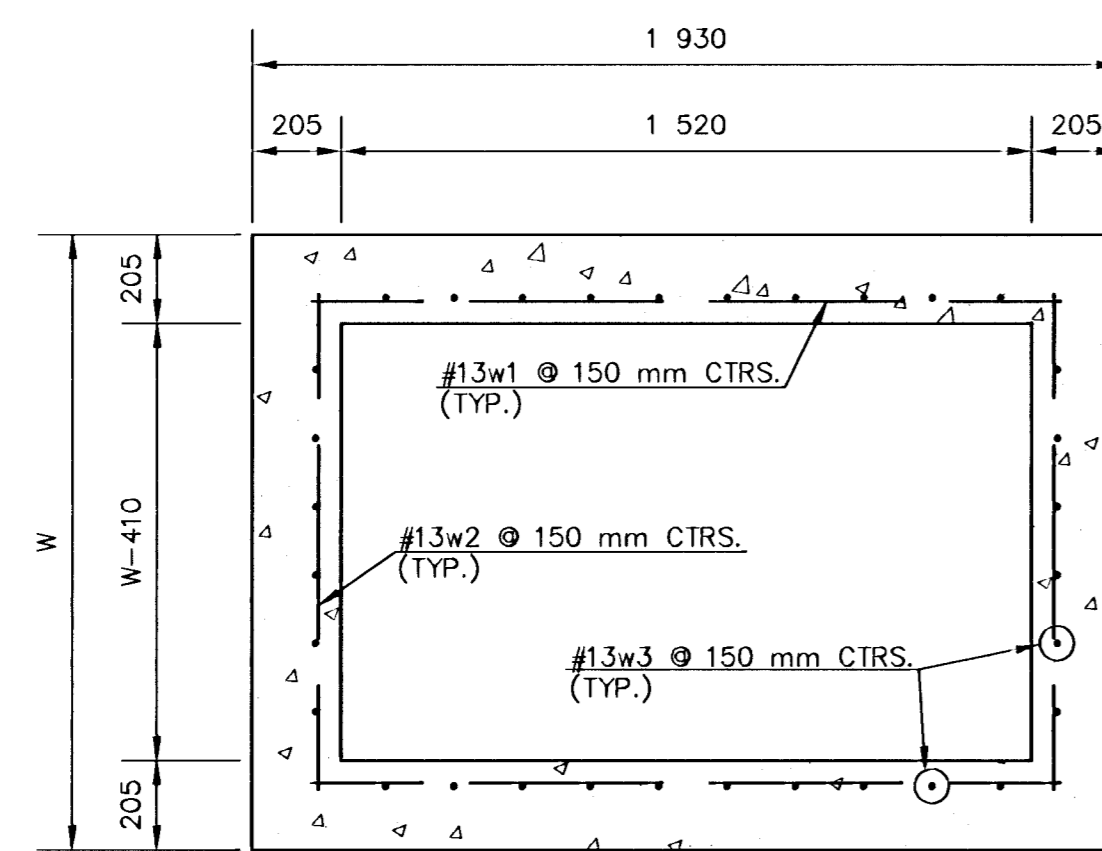
OCTOBER, 1984

CITY OF WICHITA, KANSAS

| | | | |
|---------------|-----|------------|------------|
| Design KIS | BER | Checked by | Checked by |
| Drawn by | MWB | Date | Date |
| | | | Job No. |



SECTION C-C



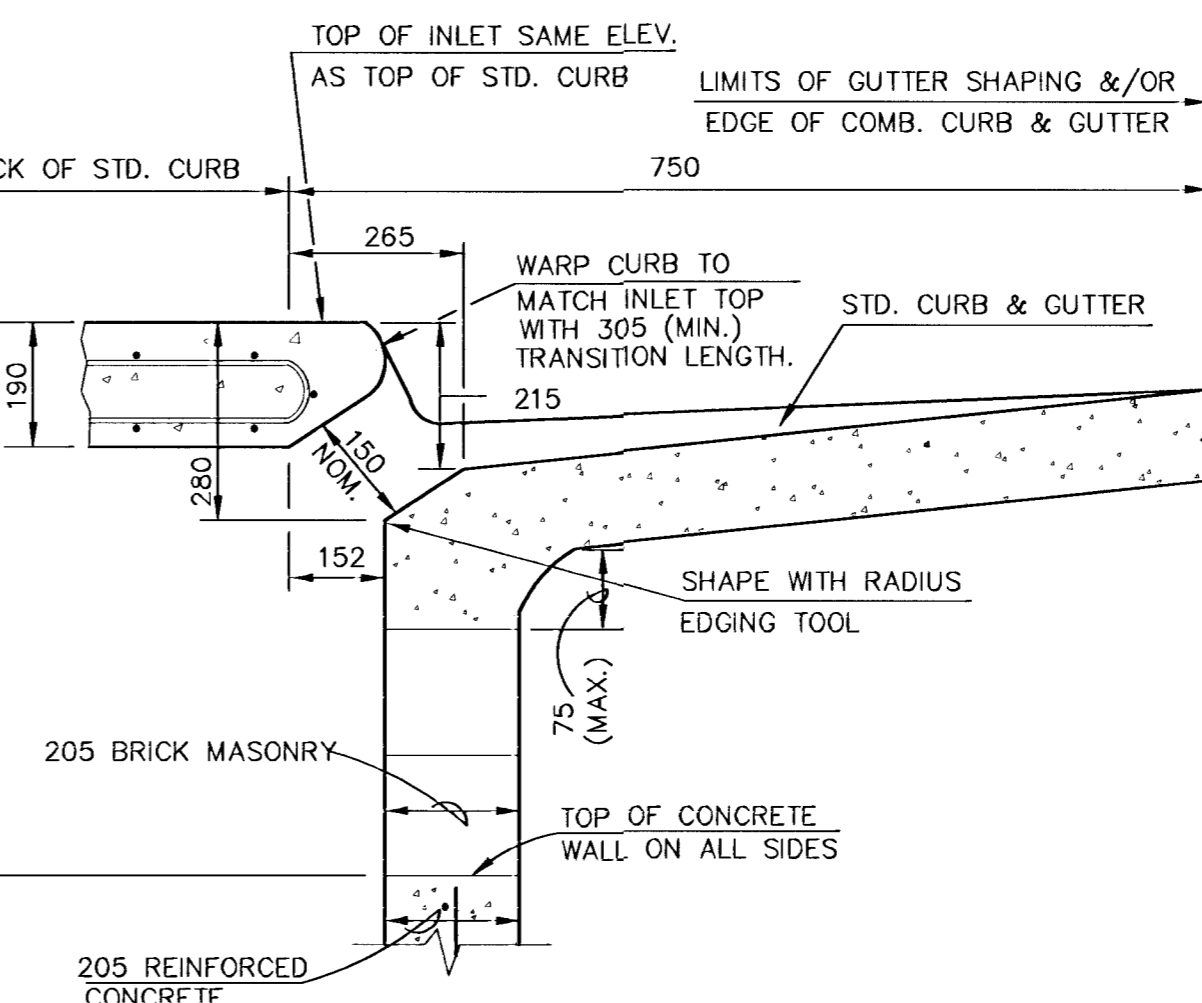
SECTION D-D

| | | W=1 321 | | W=1 626 | | W=1 930 | | W=2 235 | | W=2 540 | |
|------|------|---------|--------|---------|--------|---------|--------|---------|--------|---------|--------|
| MARK | SIZE | NO. | LENGTH | NO. | LENGTH | NO. | LENGTH | NO. | LENGTH | NO. | LENGTH |
| a1 | #13 | 4 | 1 700 | 4 | 2 310 | 4 | 2 920 | 4 | 3 530 | 4 | 4 140 |
| a2 | #13 | 4 | 2 005 | 4 | 2 615 | 4 | 3 225 | 4 | 3 835 | 4 | 4 445 |
| a3 | #13 | 2 | 1 220 | 2 | 1 525 | 2 | 1 830 | 2 | 2 135 | 2 | 2 440 |
| b1 | #13 | 1 | 1 855 | 3 | 1 855 | 5 | 1 855 | 7 | 1 855 | 9 | 1 855 |
| b2 | #13 | 6 | 535 | 6 | 535 | 6 | 535 | 6 | 535 | 6 | 535 |
| b3 | #13 | 1 | 1 880 | 1 | 1 880 | 1 | 1 880 | 1 | 1 880 | 1 | 1 880 |
| b4 | #19 | 1 | 1 420 | 1 | 1 420 | 1 | 1 420 | 1 | 1 420 | 1 | 1 420 |
| b5 | #13 | 7 | 1 625 | 9 | 1 625 | 11 | 1 625 | 13 | 1 625 | 15 | 1 625 |
| b6 | #13 | 11 | 1 015 | 11 | 1 320 | 11 | 1 625 | 11 | 1 930 | 11 | 2 235 |

| | | W=1 321 | | W=1 626 | | W=1 930 | | W=2 235 | | W=2 540 | |
|------|------|---------|--------|---------|--------|---------|--------|---------|--------|---------|--------|
| MARK | SIZE | NO. | LENGTH | NO. | LENGTH | NO. | LENGTH | NO. | LENGTH | NO. | LENGTH |
| w1 | #13 | ① | 1 625 | ① | 1 625 | ① | 1 625 | ① | 1 625 | ① | 1 625 |
| w2 | #13 | ① | 1 015 | ① | 1 320 | ① | 1 625 | ① | 1 930 | ① | 2 235 |
| w3 | #13 | ② | ③ | ② | ③ | ② | ③ | ② | ③ | ② | ③ |

NOTE: a3 BARS TO BE PLACED APPROX. 50 mm BELOW TOP OF INLET COVER.

- $2 \left(\frac{H1-200}{150} + 1 \right)$
- $22 + 2 \left(\frac{W-410}{150} + 1 \right)$
- $H1-230$



SECTION B-B

| STANDARD CURB INLET PRECAST TOPS | | | |
|----------------------------------|---------------------|---------------|----------------------|
| W | PRE-CAST TOP SIZE | PIPE SIZE | m ³ CONC. |
| 1 321 | 1 118 x 1 930 x 190 | 530 & SMALLER | ± 0.011 |
| 1 626 | 1 421 x 1 930 x 190 | 600 & 750 | ± 0.014 |
| 1 930 | 1 725 x 1 930 x 190 | 900 & 1 050 | ± 0.018 |
| 2 235 | 2 030 x 1 930 x 190 | 1 200 & 1 350 | ± 0.022 |
| 2 540 | 2 335 x 1 930 x 190 | 1 500 & 1 675 | ± 0.025 |