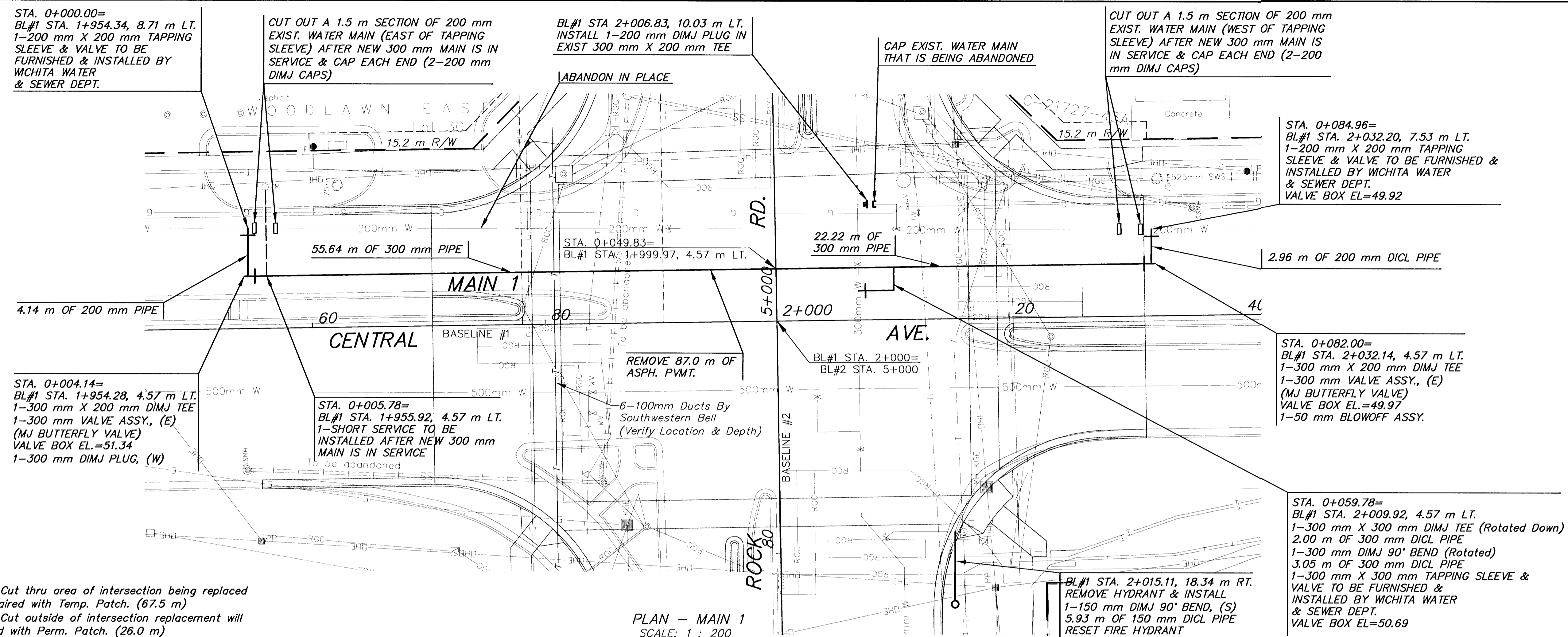


FHWA REG NO.	STATE	PROJECT NO.	YEAR	SHEET NO.	TOTAL SHEETS
7	KANSAS	87 N-0196-01	2001	27	55

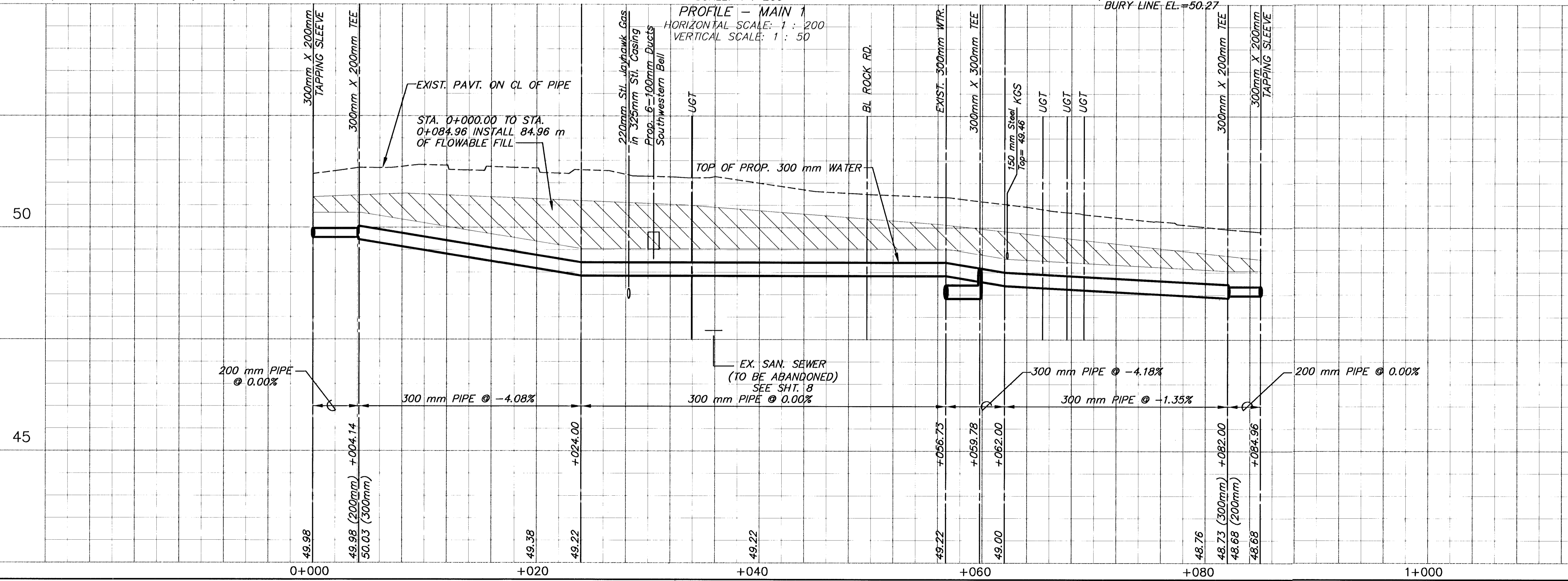
DATE	BY	REFERENCES NOTED	CHECKED



NOTES:
 Pavement Cut thru area of intersection being replaced will be repaired with Temp. Patch. (67.5 m)
 Pavement Cut outside of intersection replacement will be repaired with Perm. Patch. (26.0 m)

Note:
 See Sheet 29 for "Water Line Improvement" Quantities.

PROFILE - MAIN 1
 HORIZONTAL SCALE: 1 : 200
 VERTICAL SCALE: 1 : 50



KANSAS DEPARTMENT OF TRANSPORTATION
 CENTRAL & ROCK INTERSECTION
 WATER REPLACEMENT PLANS