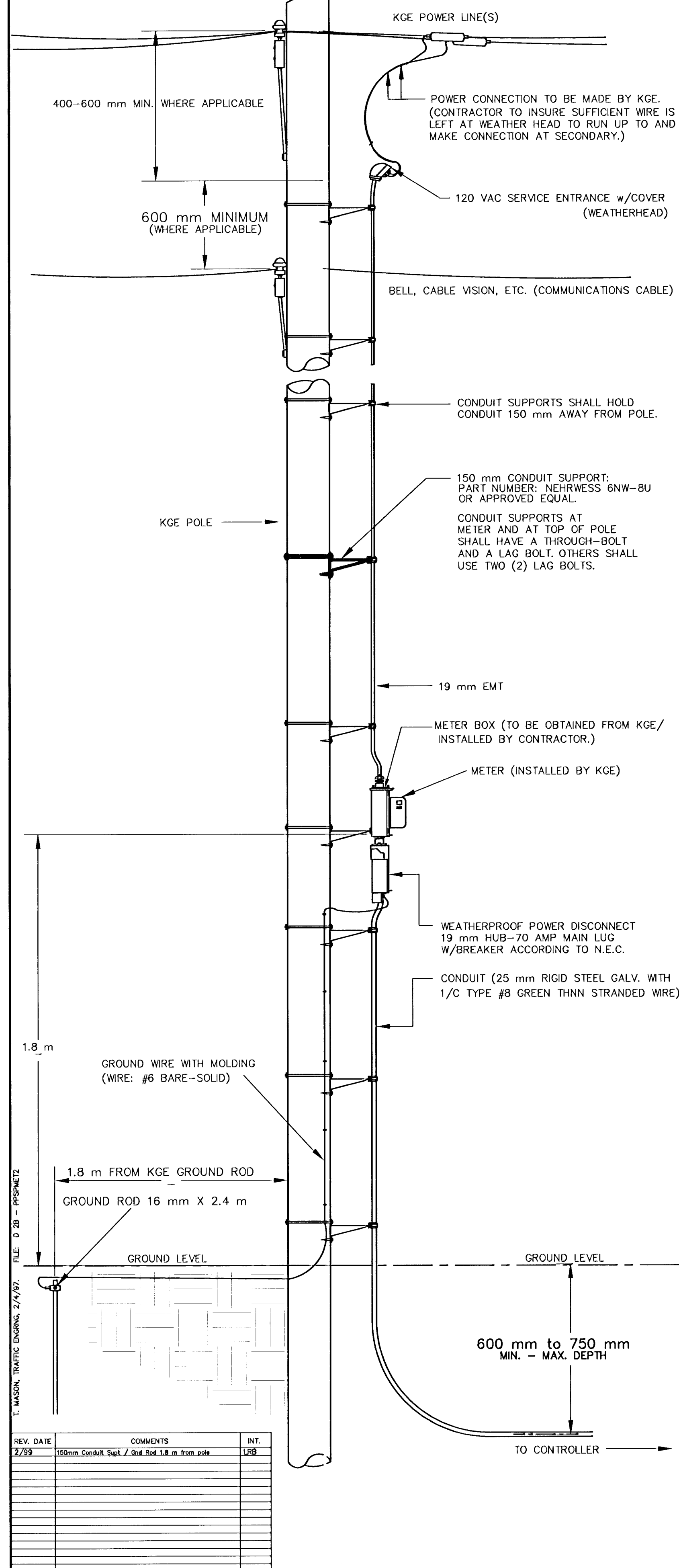
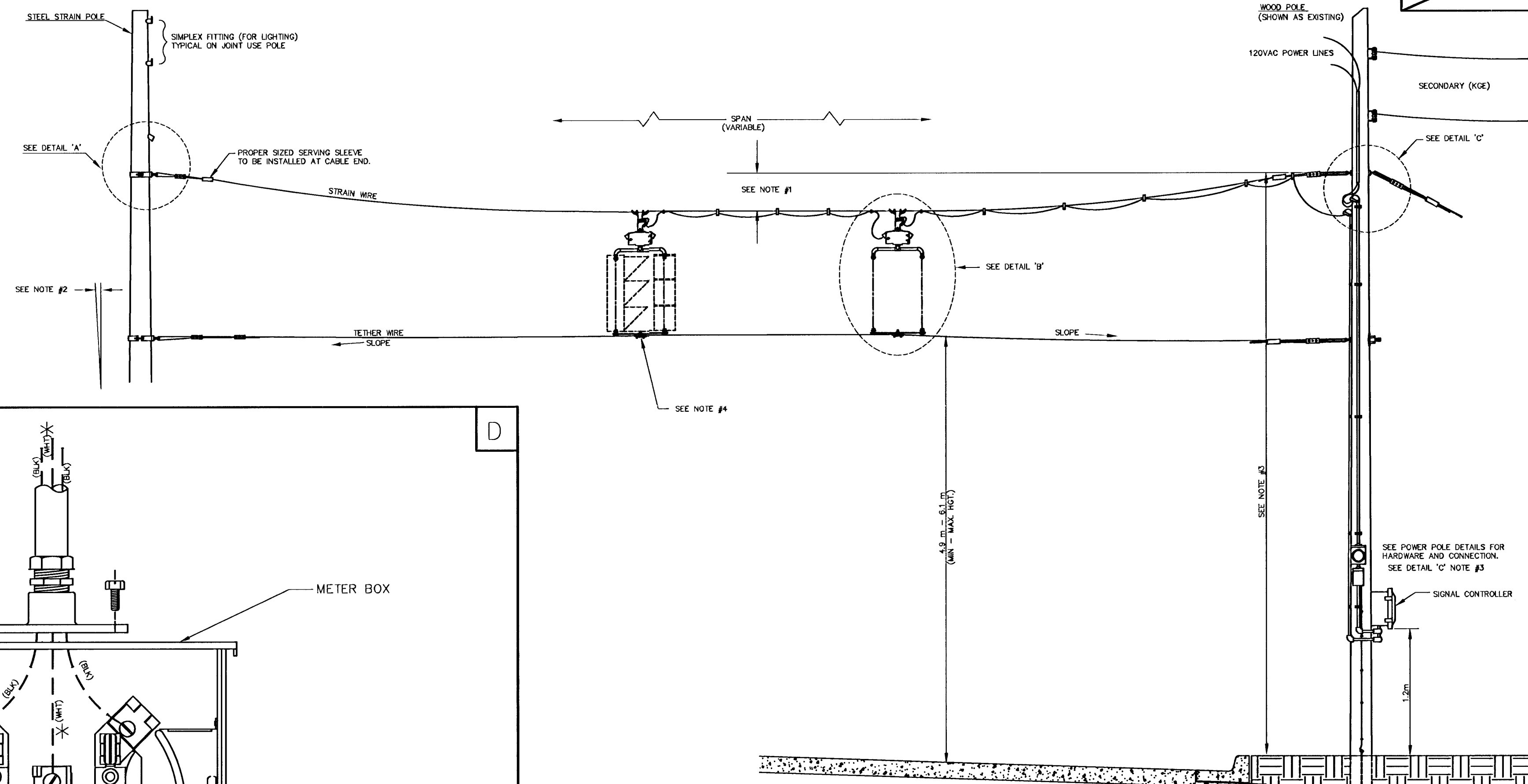


POWER POLE DETAILS



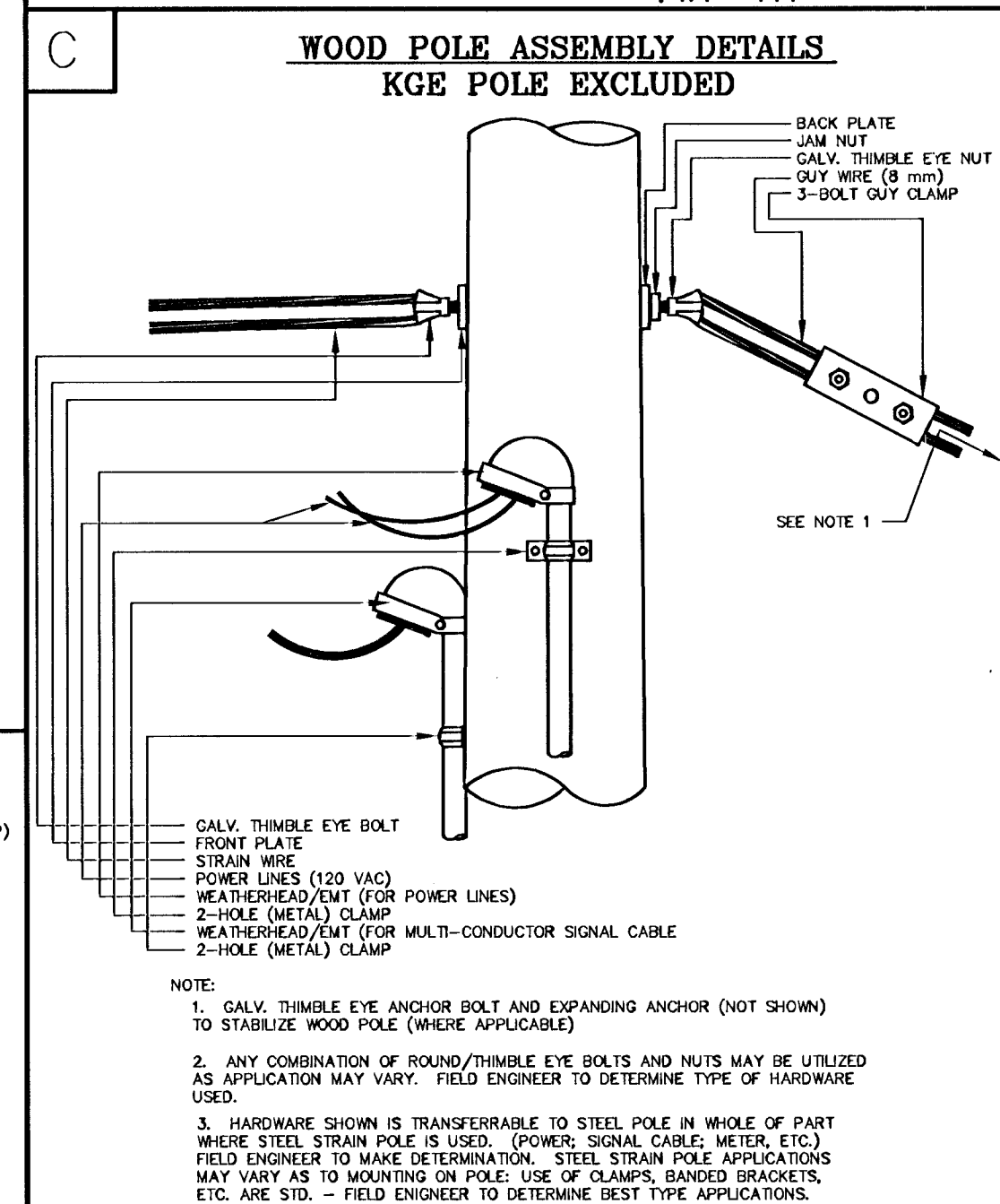
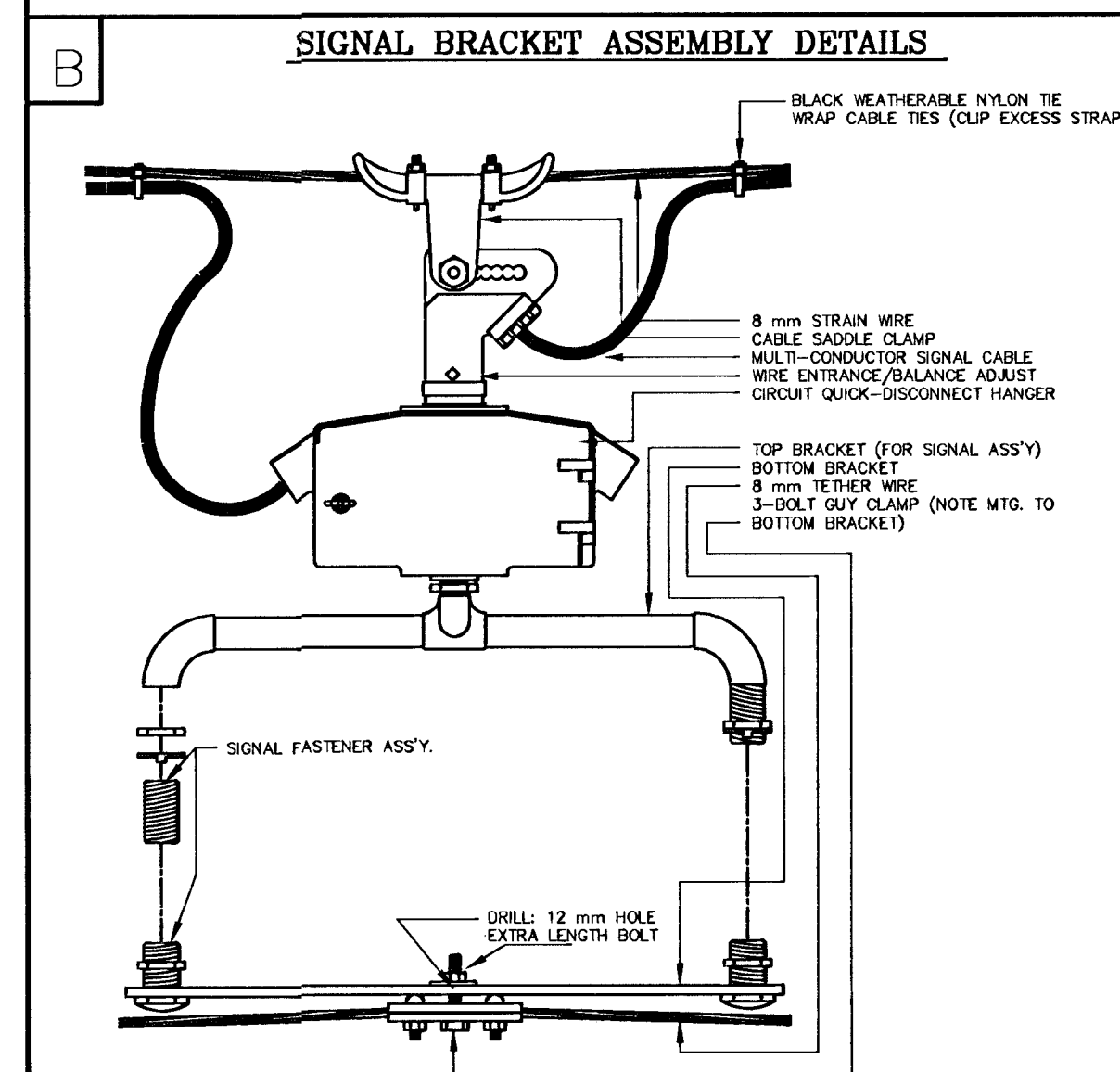
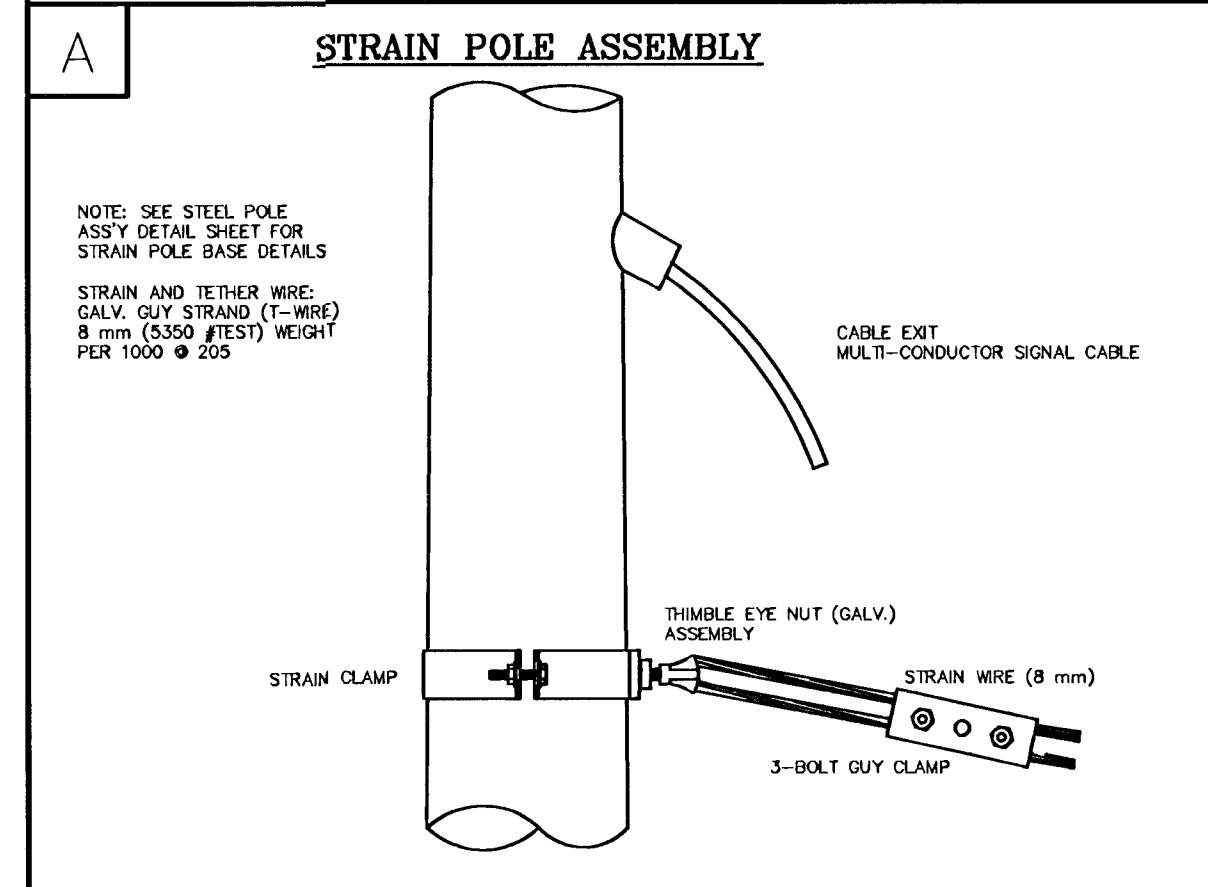
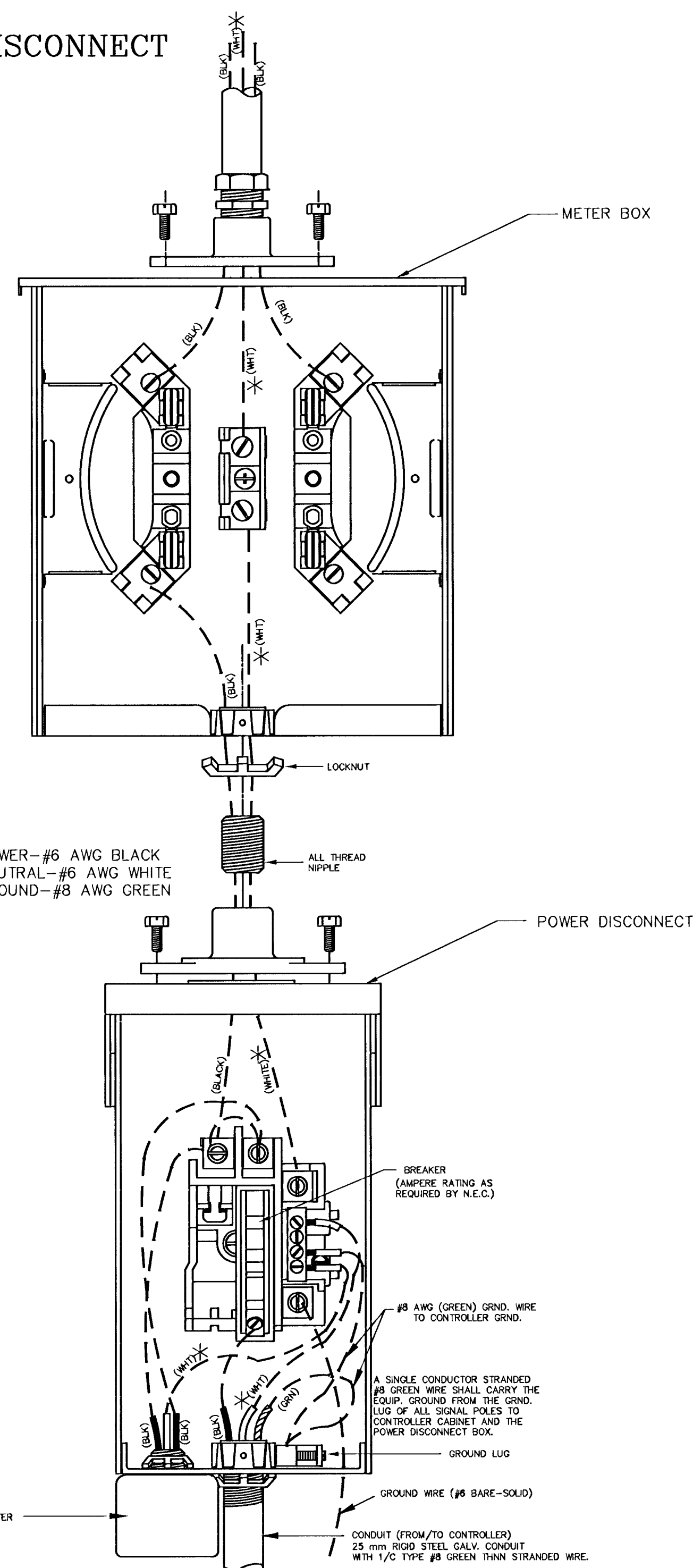
SPANWIRE ASSEMBLY DETAILS

1. MAX. SAG = 5% OF SPAN.
2. STANDARD BACKRAKE = 1.5'
3. HEIGHT OF STRAIN WIRE HOOK-UP TO BE DETERMINED BY FIELD ENGINEER. TRAFFIC SIGNAL CABLE TO BE SECURED TO STRAIN (SPAN) WIRE WEATHERABLE NYLON CABLE HANGERS (300 mm CTR.) DETAIL 'B'
4. TETHER CLAMP TO BE DESIGNED TO RELEASE UNDER 'HIGH WIND LOAD' TO PERMIT SIGNAL 'FREE SWING'.



METER BOX & POWER DISCONNECT DETAILS

* TO BE MARKED WITH WHITE TAPE



PROJECT DESCRIPTION		
POWER POLE AND SPAN POLE ASSEMBLY DETAILS		
STANDARD APPLICATIONS:		
PROJECT NUMBER 87 N-0196-01		
DRAWN BY: TM	APPROVED BY:	REVISED: LRB
DATE: Feb. 96		DATE: 2/26/99
CITY OF WICHITA DEPARTMENT OF PUBLIC WORKS		
TRAFFIC ENGINEERING DIVISION		SCALE
RANDALL W. HOSKINS, P.E., TRAFFIC ENGINEER		NO SCALE