

GENERAL NOTES:

1. Contractor will be required to provide notice to utility companies a minimum of forty-eight (48) hours prior to any excavation, as follows:

Kansas One-Call 687-2470

The Contractor must notify the following in case of an emergency:

- Cox Communications 262-4270
- Kansas Gas Service 1-888-482-4950
- Westar Energy 383-8650
- Aquila Energy 1-800-303-0357
- ATT 268-2245
- City of Wichita Water Dept. 268-4563
- City of Wichita Sewer Maint. 268-4024
- City of Wichita Storm Sewer Maint. 268-4090
- City of Wichita Traffic Maint. 268-4034
- Conoco Phillips Pipeline Co. 1-877-267-2290
- Southern Star Pipeline Co. 529-6600
- Kinder-Morgan Pipeline Co. 1-888-844-5658

2. Utility service lines, poles, valve boxes, meters, and etcetera are to be adjusted as necessary by others prior to construction unless the plans specifically call for their adjustment by the Contractor or unless the plans specifically identify a utility to be adjusted by its owner during construction. Existing utilities and their location, as shown on the plans, represent the best information obtainable for design. The Contractor will be required to work around existing utilities within the right-of-way which do not conflict with proposed construction.

3. Rubble from the removal of miscellaneous structures and excess excavation which is to be wasted shall be disposed of on sites to be provided by the Contractor. These sites shall be approved by the Engineer as to suitability, appearance and site location. Locations, in the opinion of the Engineer, that will leave an unsightly appearance will not be approved. All disposal sites must be approved by the Kansas Department of Health and Environment. Material either stockpiled or disposed of in a flood plain would require a Kansas State Board of Agriculture permit. Any material dumped in waters of the United States or wetlands is subject to U.S. Corps. of Engineers permitting regulations. Any material buried or stockpiled beyond approved construction limits would require additional archaeological investigations unless buried in a previously approved borrow location.

4. Trees and shrubs in public right-of-way which are in direct conflict with proposed new construction shall be removed by the Contractor ONLY with the Developer or Baughman Company approval. Trees and shrubs which are not in direct conflict with proposed new construction shall be saved and protected from damage.

5. The Contractor shall give all property owners and/or tenants of developed property abutting the construction of this project a minimum of ten (10) days notice prior to start of construction.

6. The Contractor shall be responsible for preserving property irons. The Contractor will be required to re-establish any property irons which are damaged or destroyed by his construction operations. Such irons shall be re-established by a licensed Land Surveyor in accordance with state laws.

7. All existing and proposed erosion control measures including silt fencing, erosion control mat, straw bales, inlet barriers, and const. entrance shall be maintained throughout construction by the Contractor and until project is accepted by the City of Wichita. The on-site Engineer shall complete weekly reports on the status of erosion control measures. The Contractor shall be required to comply with maintenance and/or replacement of erosion control measures as determined by the on-site Engineer until project is accepted by City of Wichita.

8. Any excess excavation shall be spread evenly on lots within the benefit district outside of easement areas.

9. All of Res. "A", Willow Creek East 3rd Addn. and Res. "E", Tara Falls Addn. above the water surface disturbed by construction shall be seeded and mulched as follows (Permanent Seeding):
SEED -- Kansas Premium Fescue Blend; 8#/1000 Sq. Ft.
Rye grass (PLS); 3#/1000 Sq. Ft. and
FERTILIZER -- 12-24-12 Ratio at 350 Lbs./Ac.
MULCH -- 2 Tons Prairie Hay / Acre - where E.C. Mat not specified.

All other disturbed areas not in street R/W are to be seeded as follows (Temporary Seeding):
SEED -- Rye grass (PLS)--5#/1000 Sq. Ft.

All costs associated with seeding including mobilization, preparation of ground, seeding, fertilizing, mulching, etc. shall be included in the L.S. bid item "Seeding".

10. The Developer for this project is Paul Kelsey
716 N. 119th St. #112, Wichita, KS 67212
PH# (316)722-1077 email paul.kelsey8@gmail.com

SWD #481

to serve

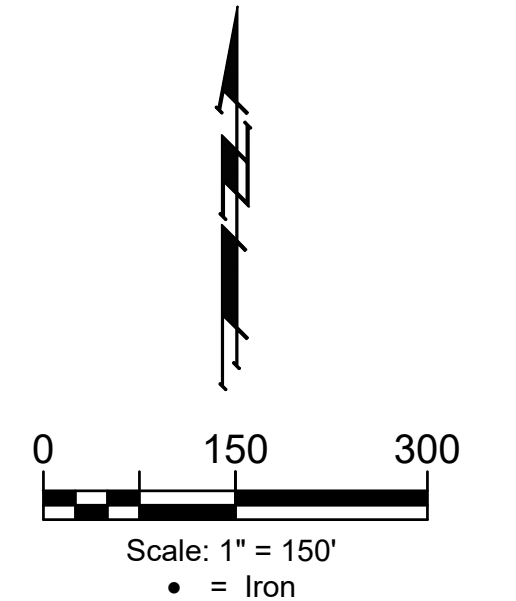
WILLOW CREEK EAST 3RD ADDITION - PHASE II & III

CITY OF WICHITA, KANSAS

Gary Janzen, P.E. City Engineer

Project Number: 458-2021-085480

47308621 E1041



SHEET INDEX

Title Sheet	1
Line 1	2
Line 2	3
Line 3	4-6
Line 4	7-8
Line 2 & Line 3	9
Mass Grading / Erosion Control	10
Pond Plans	11
Erosion Control BMP Details	12-16
Mass Grading Typical Section	17
Std. Type 1A Curb Inlet Detail	18
Backyard Inlet Detail	19
Frame and Cover Details	20
Misc. SWS Details	21
Coordinate Sheet	22
Copy of Plat	23

BENCHMARKS

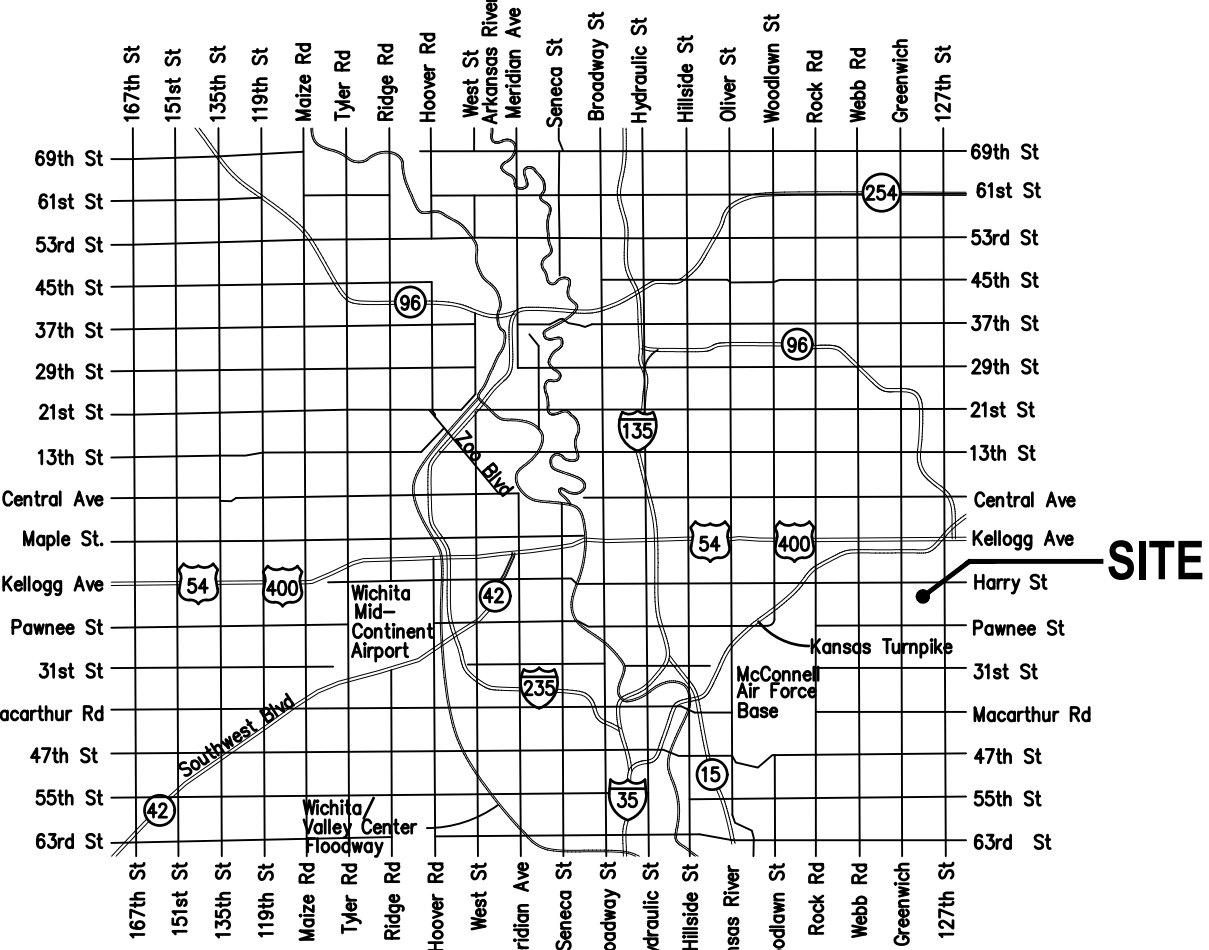
Brass benchmark disc in top of curb, east of wheelchair ramp NE cor. of Funston and Lynnrae Elev. = 1343.69 NAVD88

Brass benchmark disc in top of curb, north of wheelchair ramp NW cor. of Funston and Herrington Elev. = 1344.71 NAVD88

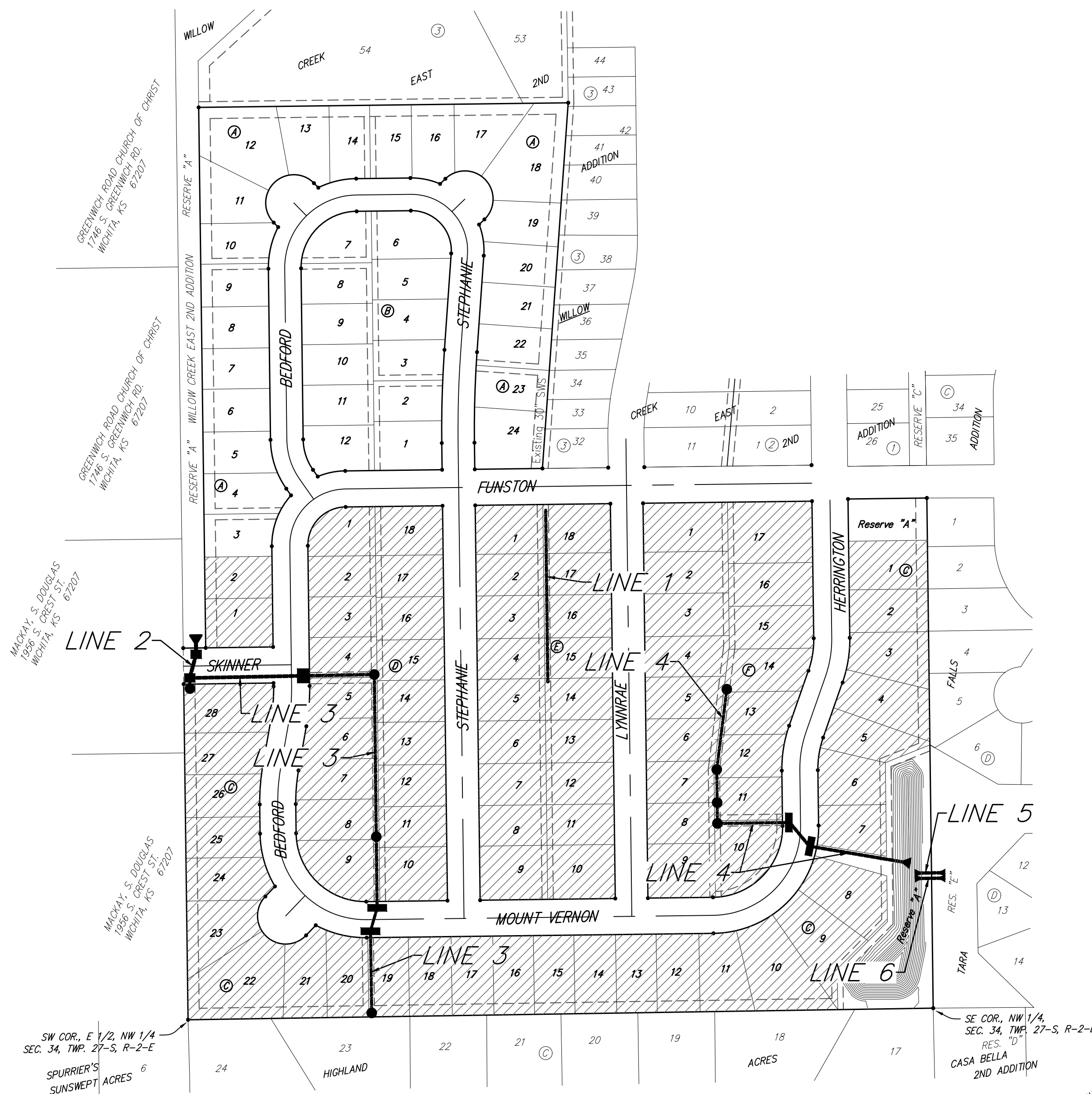
BENEFIT DISTRICT

EARTH WORK TOTALS (Unadjusted for shrink & swell)
(for information only)

	Excavation	Fill
Reserve "A" Pond	5,673	-
Mass Grading	26,867	33,537
Total Earthwork	32,540	33,537



VICINITY MAP



Stormwater Certification:

New Development or Redevelopment (Circle One)

Stormwater Permit # _____

NOI Permit # S-AR94-1530 KSR 114502

These construction plans were prepared in accordance with the current Stormwater management Regulations as set forth in the City of Wichita's Stormwater Management Ordinance 16.32 and the policies/guidelines presented in the Wichita/Sedgwick County Stormwater Manual.

Site Area (Acres) = 26.7 Ac.

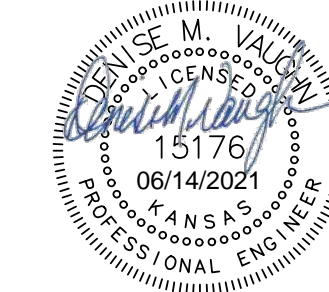
Disturbed Area (Acres) = 26.7 Ac.

Water Quality Treatment: Wet Ponds

Downstream Channel Protection: Wet Ponds

Detention: Wet Ponds

The BMP used for this development is Wet Ponds



BAUGHMAN COMPANY
315 Ellis St. Wichita, KS 67211 316-262-7271
BaughmanCo.com