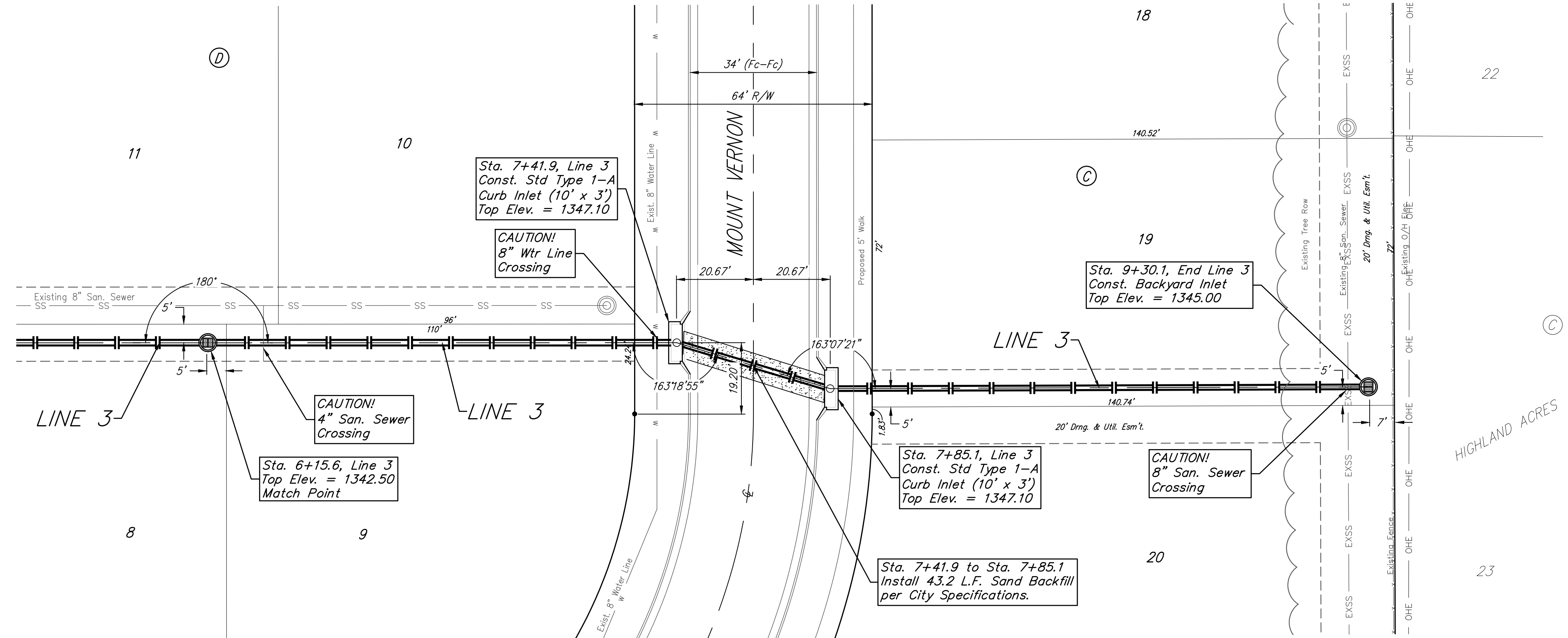


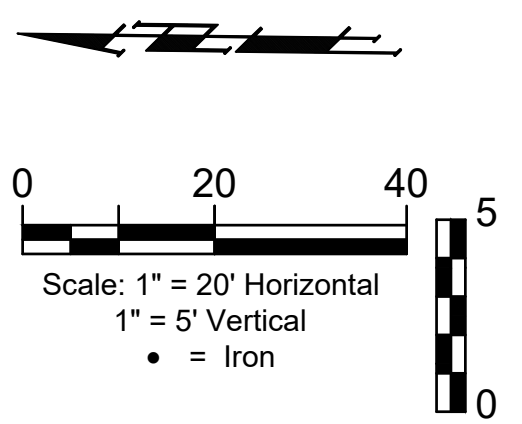
BENCHMARKS:
 Brass benchmark disc in top of curb, east of wheelchair ramp NE cor. of Funston and Lynnrae Elev. = 1343.69 NAVD88

Brass benchmark disc in top of curb, north of wheelchair ramp NW cor. of Funston and Herrington Elev. = 1344.71 NAVD88

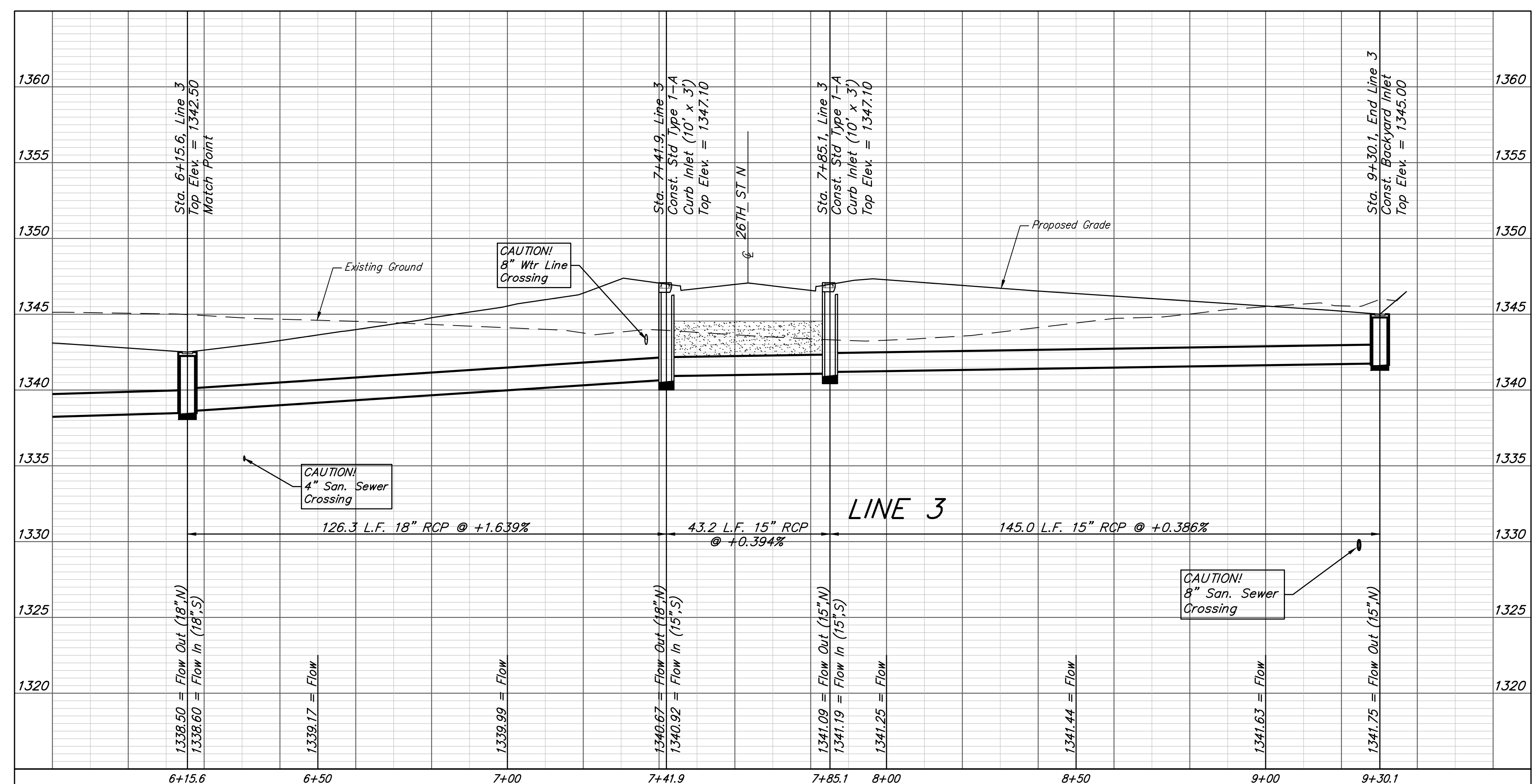
WILLOW CREEK EAST 3RD ADDITION



Existing trees which are in direct conflict with proposed new construction shall be removed by the Contractor ONLY with approval of the Design Engineer. Trees not in direct conflict with proposed new construction shall remain and be protected from damage. Cost shall be included in bid item "Site Clearing"



WILLOW CREEK EAST 3RD ADDITION





BAUGHMAN COMPANY

315 Ellis St.
 Wichita, KS 67211
 316-262-7271
 BaughmanCo.com

WILLOW CREEK EAST 3RD ADDITION - PHASE II

LINE 3

STORM WATER DRAIN IMPROVEMENTS

PROJECT NUMBER:

DESIGN: DMV DRAWN: JAK
 DATE: April 14, 2021

SHEET **6** OF **23**

File: E:\Projects\Willow Creek East 3rd Addition_17-04-P283\Engineering\Phase 3\SWD.dwg