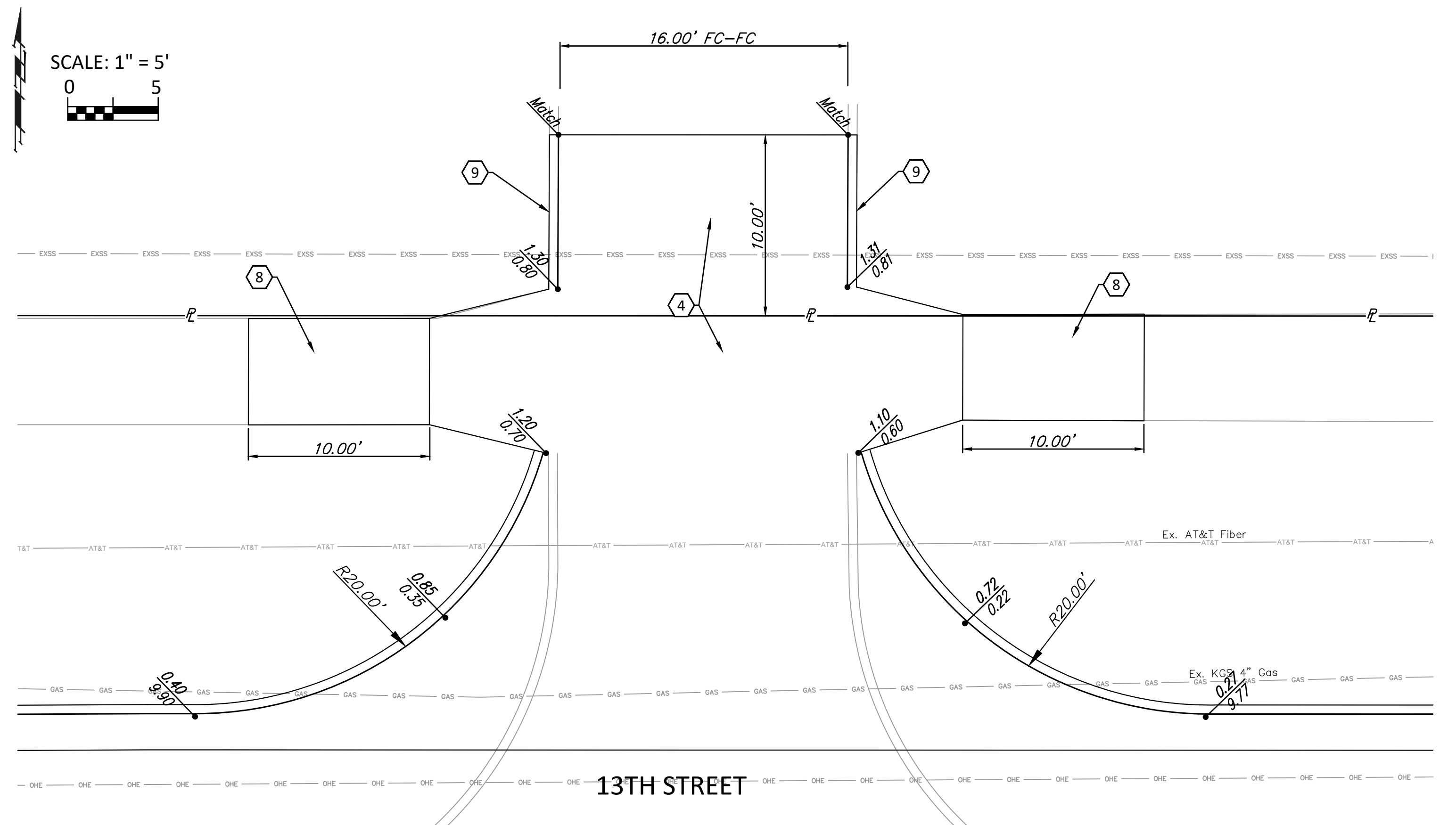
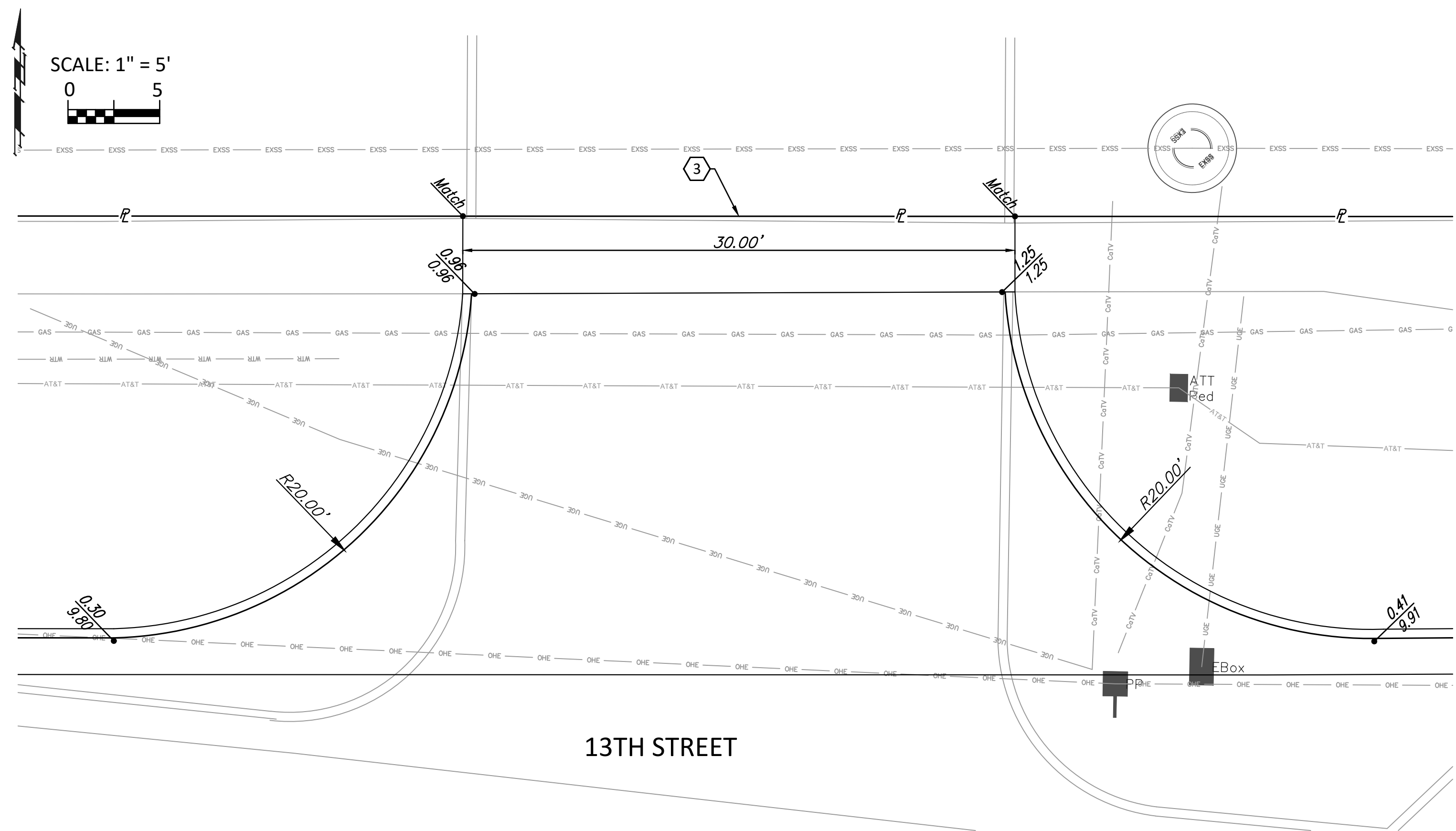


**WESLEY REHAB WEST DRIVE**  
1"=5'



**WESLEY REHAB EAST DRIVE**  
1"=5'

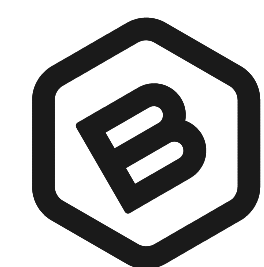


**ZIGGY'S DRIVE**  
1"=5'

**CONSTRUCTION NOTES**

- 3 CONSTRUCT CONCRETE DRIVEWAY 8" (REINFORCED) (30' WIDE) (20' RADIUS). MATCH EXISTING PAVEMENT & CURB AT R/W LINE.
- 4 CONSTRUCT CONCRETE DRIVEWAY 8" (REINFORCED) (20' RADIUS). REPLACE WHEELCHAIR RAMP AND SIDEWALK AS SHOWN. REPLACE 10' OF DRIVE AND MONO EDGE CURB NORTH OF R/W LINE.
- 8 CONSTRUCT CONCRETE SIDEWALK, 4" (6' WIDE) & WHEELCHAIR RAMP. CONSTRUCT TO NEAREST JOINT.
- 9 CONSTRUCT CONC. CURB, MONO EDGE (6" & 1-1/2")

**PRELIMINARY PLAN. NOT FOR CONSTRUCTION.**  
This document is preliminary in nature and is not a final, signed and sealed document.



**BAUGHMAN COMPANY**

315 Ellis St.  
Wichita, KS 67211  
316-262-7271  
BaughmanCo.com

13TH STREET  
WIDENING

**DRIVE  
DETAILS**

CIP IMPROVEMENTS

PROJECT NUMBER:  
472-2020-085654

DESIGN: LP DRAWN: LP

DATE: Apr. 8, 2021

SHEET **9** OF **32**