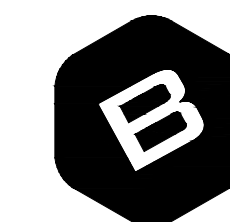


NOTES:

1. 1U = 1.75"
2. CABINET EQUIPMENT CONFIGURATION SHOWN BASED ON 24U RACK.
3. 336 CABINET SHALL BE MANUFACTURED TO BE POLE MOUNTED.
4. CABINET SHALL BE EQUIPPED WITH ALL HARDWARE AND BRACKETS NECESSARY FOR POLE MOUNTED INSTALLATION.

PLANS PREPARED BY:

iteris



BAUGHMAN COMPANY
 315 Ellis St. Wichita, KS 67211 316-262-7271
 BaughmanCo.com

1700 Carnegie Avenue, Suite 100
 Santa Ana, CA 92705-0051
 Phone: (949) 270-9480
 Fax: (949) 270-9481

THIS PLAN IS ACCURATE FOR EQUIPMENT UPGRADE WORK ONLY.



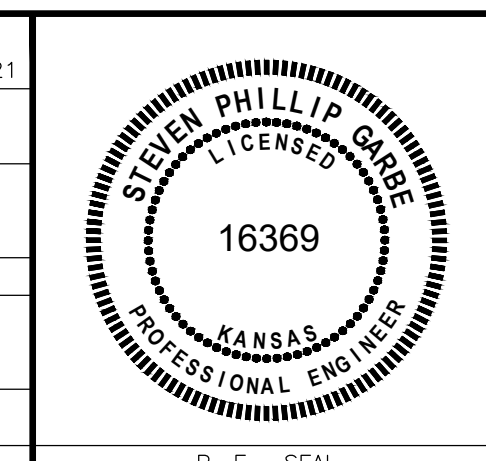
KS: (800) 344-7233 WICHITA: (316) 687-2470

The Contractor shall provide a minimum advance notice of TWO (2) Working Days to Utility Companies prior to any excavation.

REVISIONS		
NO.	DATE	DESCRIPTION

REFERENCES	
BENCH MARK NO.	DESCRIPTION

DESIGNED BY: BAUGHMAN CO. & ITERIS, INC	DATE: 05/07/21	CHECKED BY: STEVEN P. GARBE	DATE: 05/07/21
DRAWN BY: BAUGHMAN CO. & ITERIS, INC	DATE: 05/07/21		
RECOMMENDED BY:			
APPROVED BY:			



DOUGLAS AVENUE TRAFFIC SIGNAL IMPROVEMENTS
DOUGLAS AVENUE EQUIPMENT UPGRADES
336 STRETCH CABINET LAYOUT

CITY OF WICHITA

SHEET
20 OF 23

PLAN NUMBER