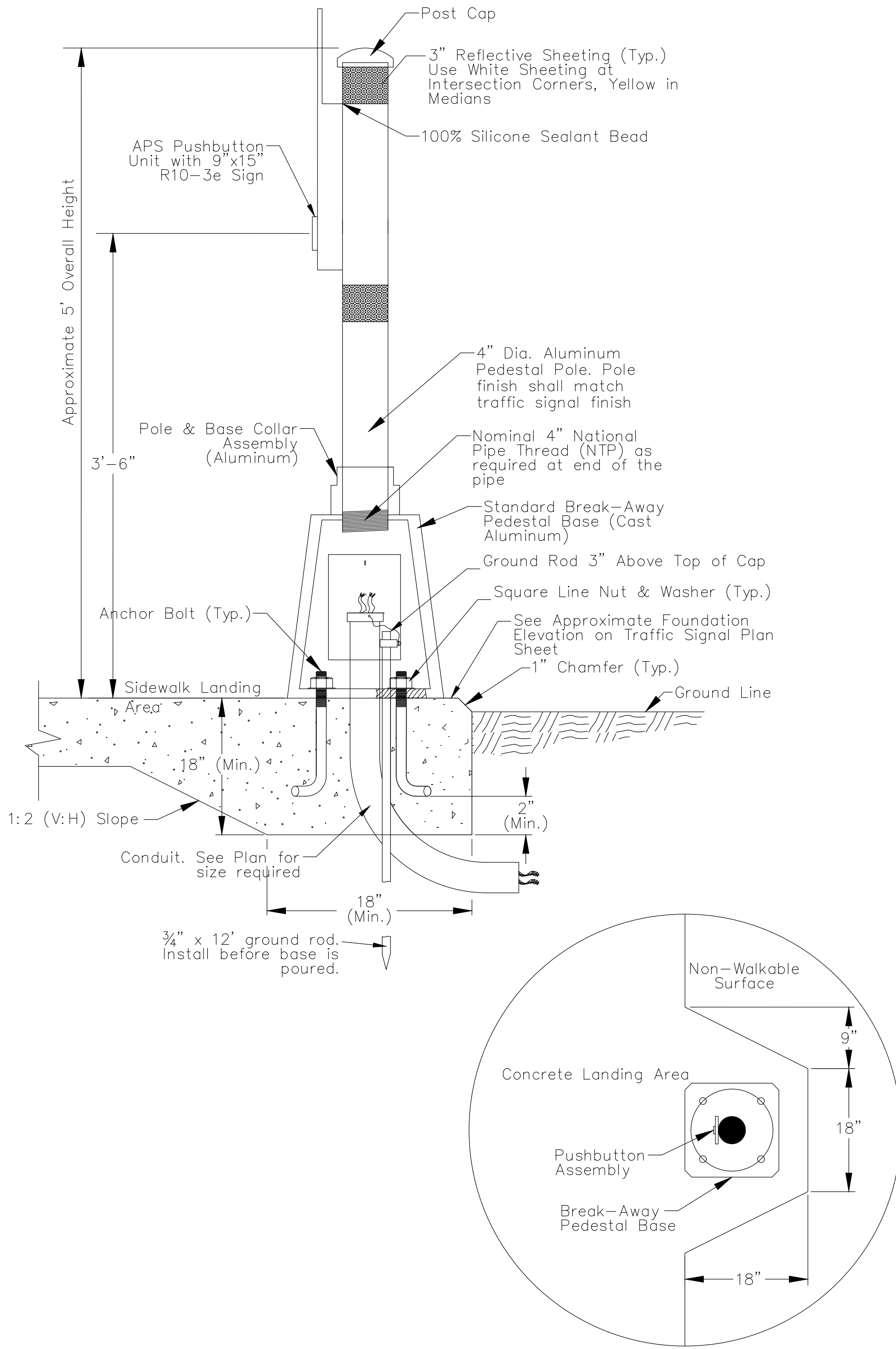
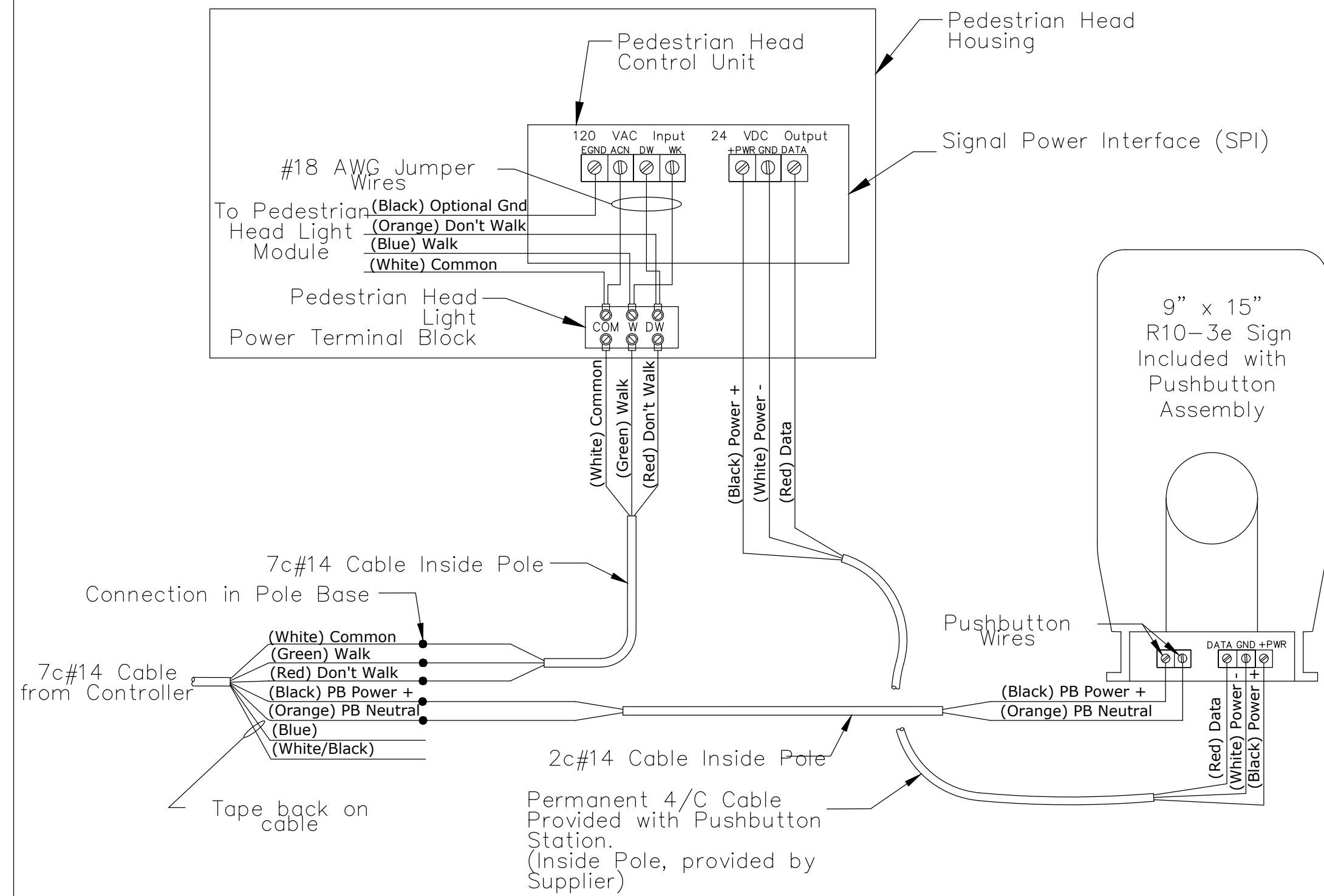


NOTE TO DESIGNER: Designer shall verify that pedestrian features and locations meet MUTCD requirements (latest edition)

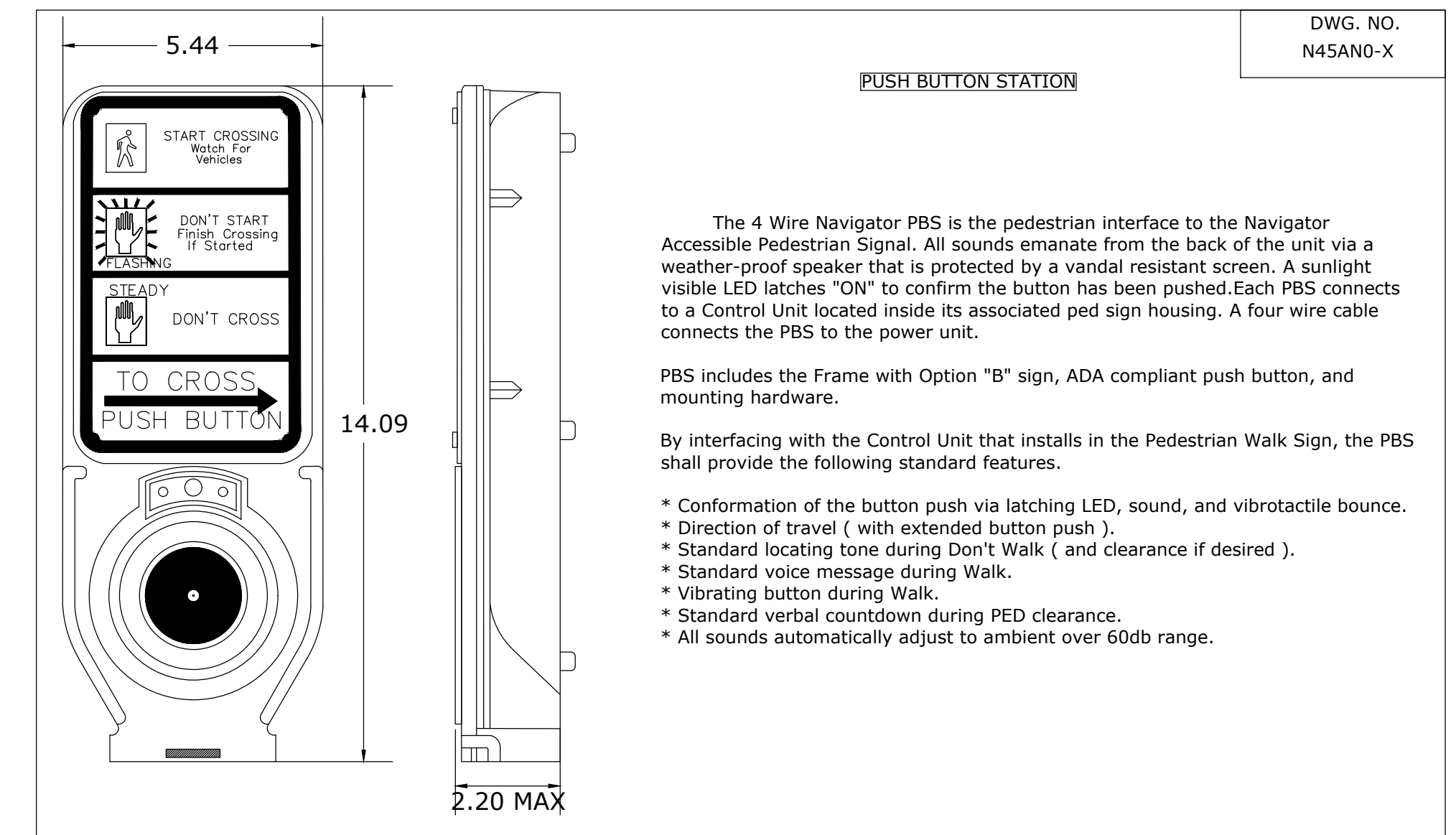


APS PUSHBUTTON STATION

1. PLUMB THE PUSHBUTTON STATION WITH GALVANIZED STEEL LEVELING SHIMS AS REQUIRED.
2. USE #6 BARE COPPER GROUND CONDUCTOR FROM CLAMP TO GROUND BOLT IN ACCESS HOLE.
3. THE PUSHBUTTON STATION FOUNDATION HAS TWO (2) OPTIONS. BOTH OPTIONS ARE SUBSIDIARY TO THE APS PUSHBUTTON STATION AND NO ADDITIONAL PAYMENT WILL BE MADE REGARDLESS OF FOUNDATION TYPE.
  - A. Poured monolithic with the sidewalk (shown above) - provide a 1:2 (V:H) slope grade where the sidewalk depth transitions to the 18" foundation depth.
  - B. ALTERNATIVE FOUNDATION DESIGN - AN 18" DEEP FOUNDATION (18"x18") MAY BE USED WITH BOND BREAKER OR EXPANSION JOINT TO SEPARATE FOUNDATION FROM SIDEWALK.



PEDESTRIAN PUSHBUTTON WIRING DIAGRAM



**PUSH BUTTON STATION**

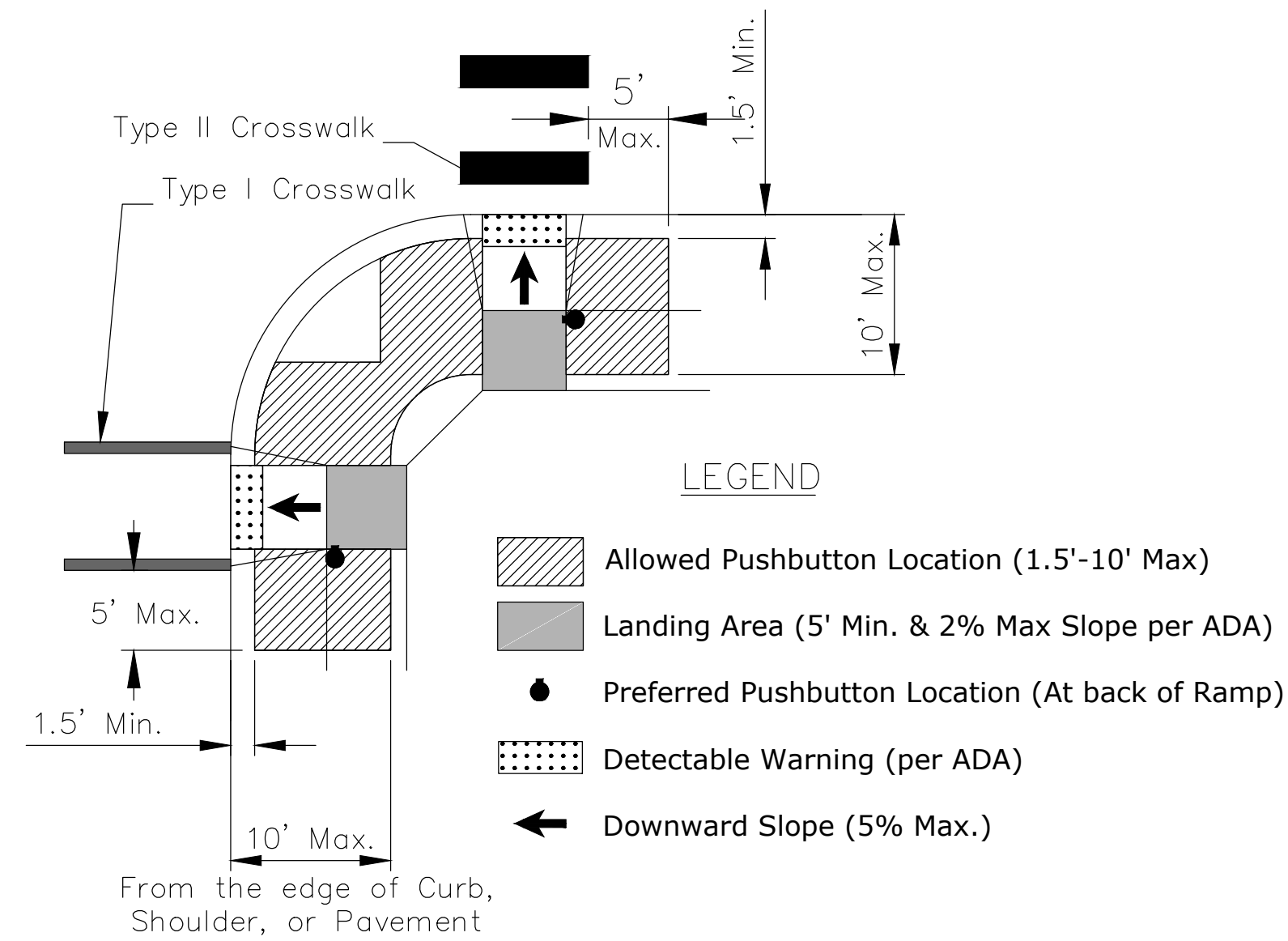
The 4 Wire Navigator PBS is the pedestrian interface to the Navigator Accessible Pedestrian Signal. All sounds emanate from the back of the unit via a weather-proof speaker that is protected by a vandal resistant screen. A sunlight visible LED latches "ON" to confirm the button has been pushed. Each PBS connects to a Control Unit located inside its associated ped sign housing. A four wire cable connects the PBS to the power unit.

PBS includes the Frame with Option "B" sign, ADA compliant push button, and mounting hardware.

By interfacing with the Control Unit that installs in the Pedestrian Walk Sign, the PBS shall provide the following standard features.

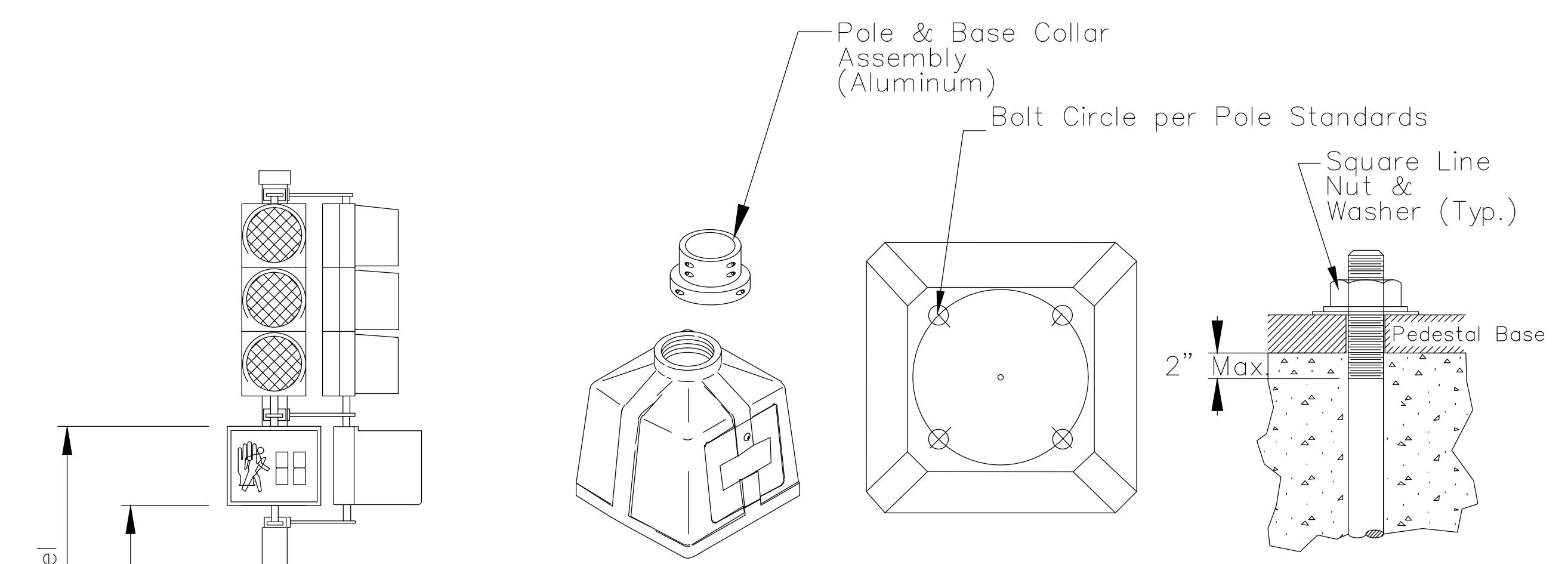
- \* Conformation of the button push via latching LED, sound, and vibrotactile bounce.
- \* Direction of travel ( with extended button push ).
- \* Standard locating tone during Don't Walk ( and clearance if desired ).
- \* Standard voice message during Walk.
- \* Vibrating button during Walk.
- \* Standard verbal countdown during PED clearance.
- \* All sounds automatically adjust to ambient over 60db range.

DWG. NO. N45ANO-X



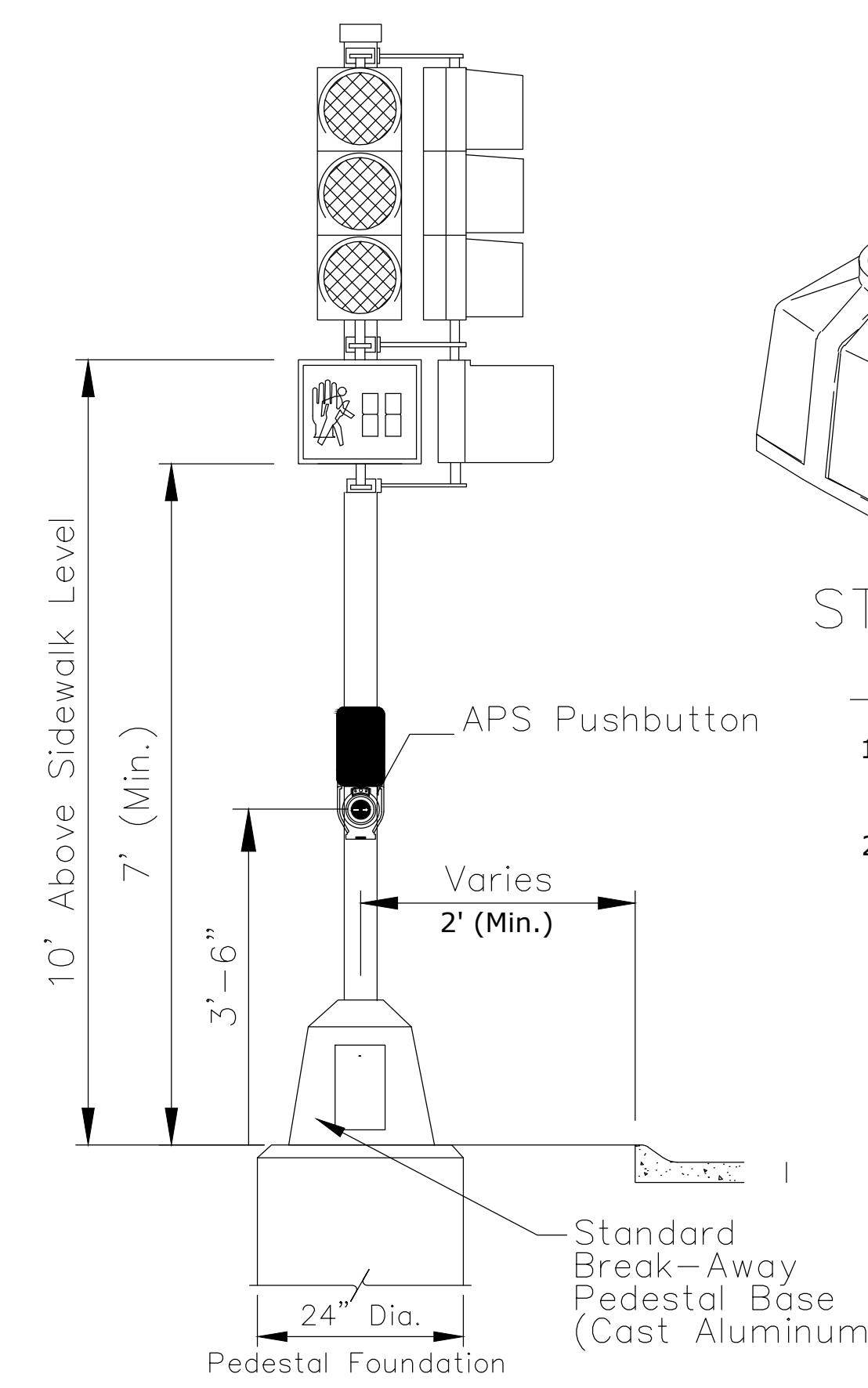
PUSHBUTTON LOCATION AREA

1. THIS FIGURE IS FOR REFERENCE ONLY AND PLACEMENT OF THE PUSHBUTTON STATION IS CRITICAL. CONSTRUCT & LOCATE PUSHBUTTONS IN ACCORDANCE WITH CURRENT MUTCD (CHAPTER 4E), ADA, AND PUBLIC RIGHTS OF WAY ACCESSIBILITY GUIDELINES (PROWAG) REQUIREMENTS.
2. MOUNT THE BUTTON TO A LEVEL, ALL-WEATHER SURFACE THAT IS CAPABLE OF EASY ACTIVATION AND CONVENIENTLY LOCATED NEAR EACH END OF THE CROSSWALK WITH THE FACE PARALLEL WITH THE ASSOCIATED CROSSWALK.
3. PUSHBUTTONS SHOULD BE SEPARATED BY A DISTANCE OF AT LEAST 10 FEET WITH A MOUNTING HEIGHT OF 3.5 FEET (42 INCHES), ABOVE THE SIDEWALK.
4. PROVIDE A 6 FOOT MINIMUM CLEAR DISTANCE WHEREVER POSSIBLE BETWEEN A PUSHBUTTON STATION & ANY VERTICAL OBSTRUCTIONS FOR MAINTENANCE & SNOW REMOVAL PURPOSES.



STANDARD BREAK-AWAY PEDESTAL BASE & ANCHOR BOLT DETAIL

1. STANDARD BREAK-AWAY PEDESTAL BASE SHALL BE USED ON BOTH THE TRAFFIC SIGNAL PEDESTAL AND APS PUSHBUTTON STATION.
2. USE SQUARE LINE NUTS AND WASHERS ON PEDESTAL BASE.



TRAFFIC SIGNAL PEDESTAL

SEE STANDARD SHEET "TRAFFIC SIGNAL INSTALLATION DETAIL SHEET" FOR PEDESTRIAN FOUNDATION DETAILS.



**SIGNAL PEDESTAL, PUSHBUTTON STATION, & APS PUSHBUTTON DETAILS**

TRAFFIC ENGINEER APP'D 05/07/21  
**MIKE ARMOUR, P.E.**

PROJECT NUMBER	ORG NUMBER	DATE

CITY ENGINEER'S OFFICE  
CITY HALL - SEVENTH FLOOR  
455 NORTH MAIN STREET  
WICHITA, KANSAS 67202-1620  
(316) 268-4501

SHEET  
**21 OF 23**