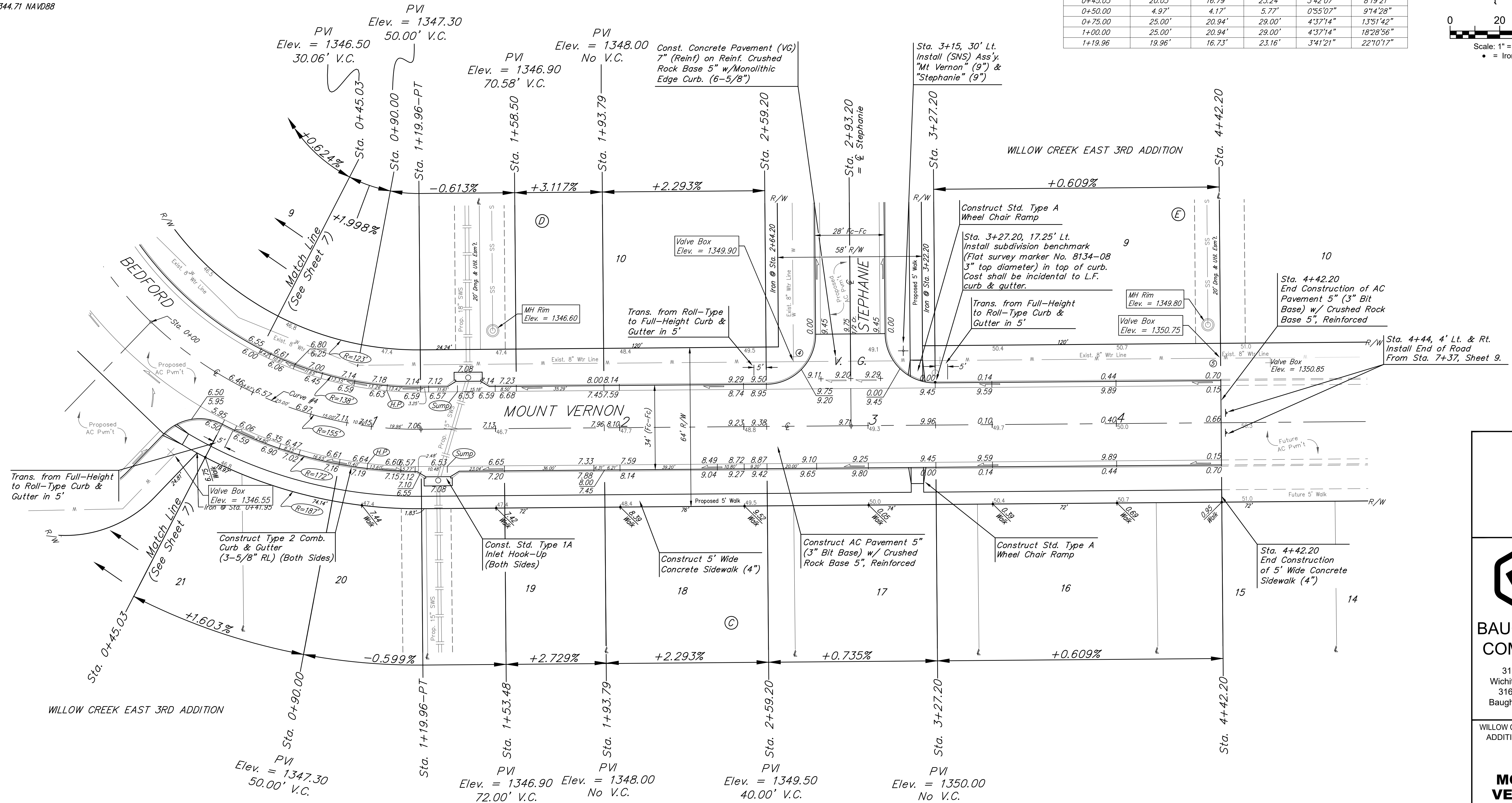
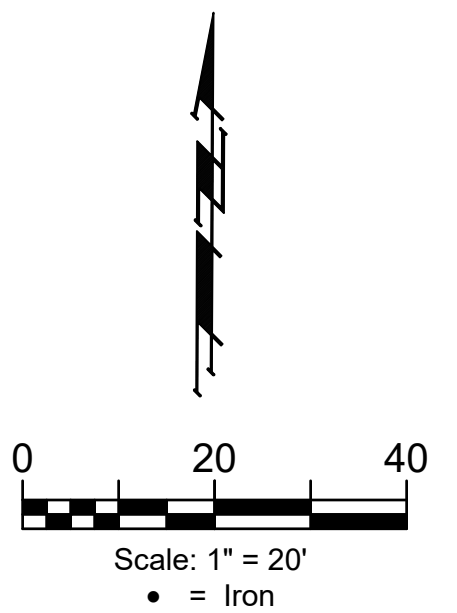


BENCHMARKS:
 Brass benchmark disc in top of curb, east of wheelchair ramp NE cor. of Funston and Lynnae Elev. = 1343.69 NAVD88

Brass benchmark disc in top of curb, north of wheelchair ramp NW cor. of Funston and Herrington Elev. = 1344.71 NAVD88

Curve #4
 Curve Data Based on Centerline

Station	Arc	Face Chord Lengths		Defl.	Total Defl.
		B' Left	B' Right		
0+00.00	-	-	-	0'00"00"	0'00"00"
0+25.00	25.00'	20.94'	29.00'	4'37"14"	4'37"14"
0+45.03	20.03'	16.79'	23.24'	3'42"07"	8'19"21"
0+50.00	4.97'	4.17'	5.77'	0'55"07"	9'14"28"
0+75.00	25.00'	20.94'	29.00'	4'37"14"	13'51"42"
1+00.00	25.00'	20.94'	29.00'	4'37"14"	18'28"56"
1+19.96	19.96'	16.73'	23.16'	3'41"21"	22'10"17"



Roll type curb & gutter to be constructed on the pavement on this sheet.
 Top of curb elevation are given for full height curb.



BAUGHMAN COMPANY

315 Ellis St.
 Wichita, KS 67211
 316-262-7271
 BaughmanCo.com

WILLOW CREEK EAST 3RD ADDITION - PHASE II

MOUNT VERNON

Sta. 5+06.63 to Sta. 7+37.77
 Street Paving Improvements

PROJECT NUMBER:
 472-85507

DESIGN: DMV DRAWN: JAK
 DATE: 6/21/21

SHEET **10** OF **27**

File: E:\Projects\Willow Creek East 3rd Addition_17-04-P283\Engineering\Phase 2\STR_20-10-E742\STR PLANS.dwg