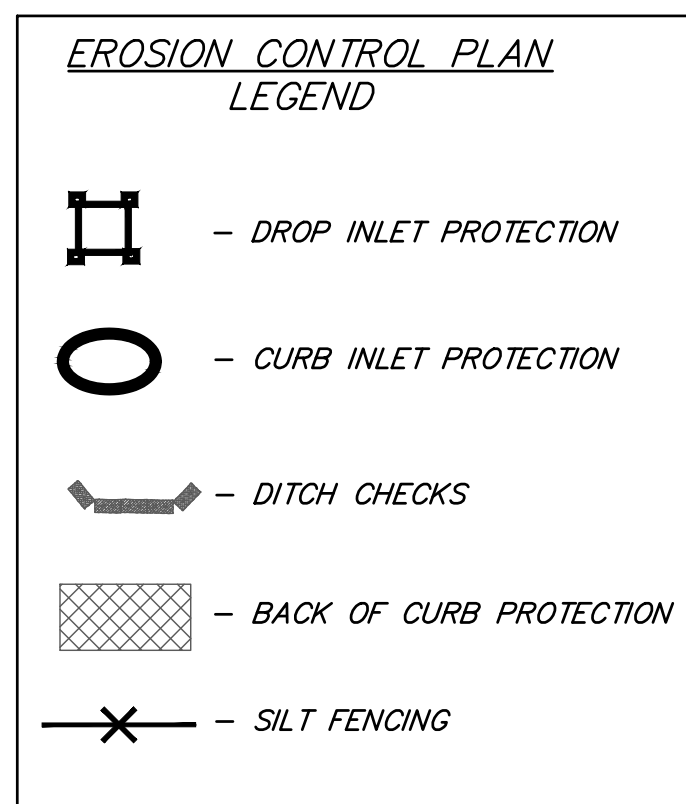
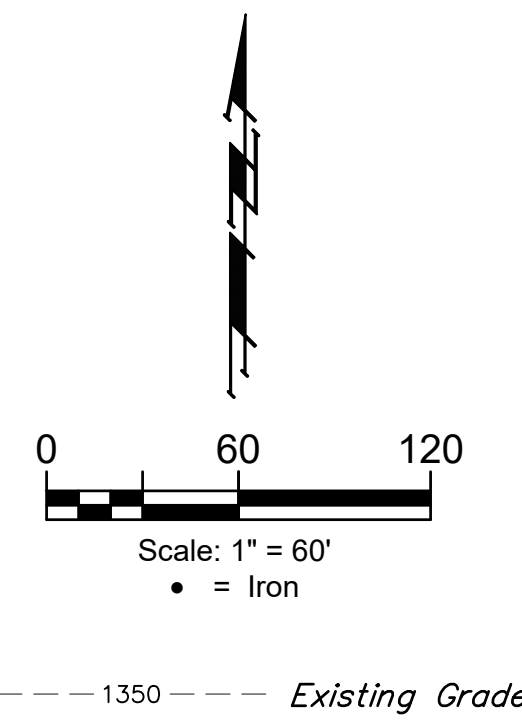
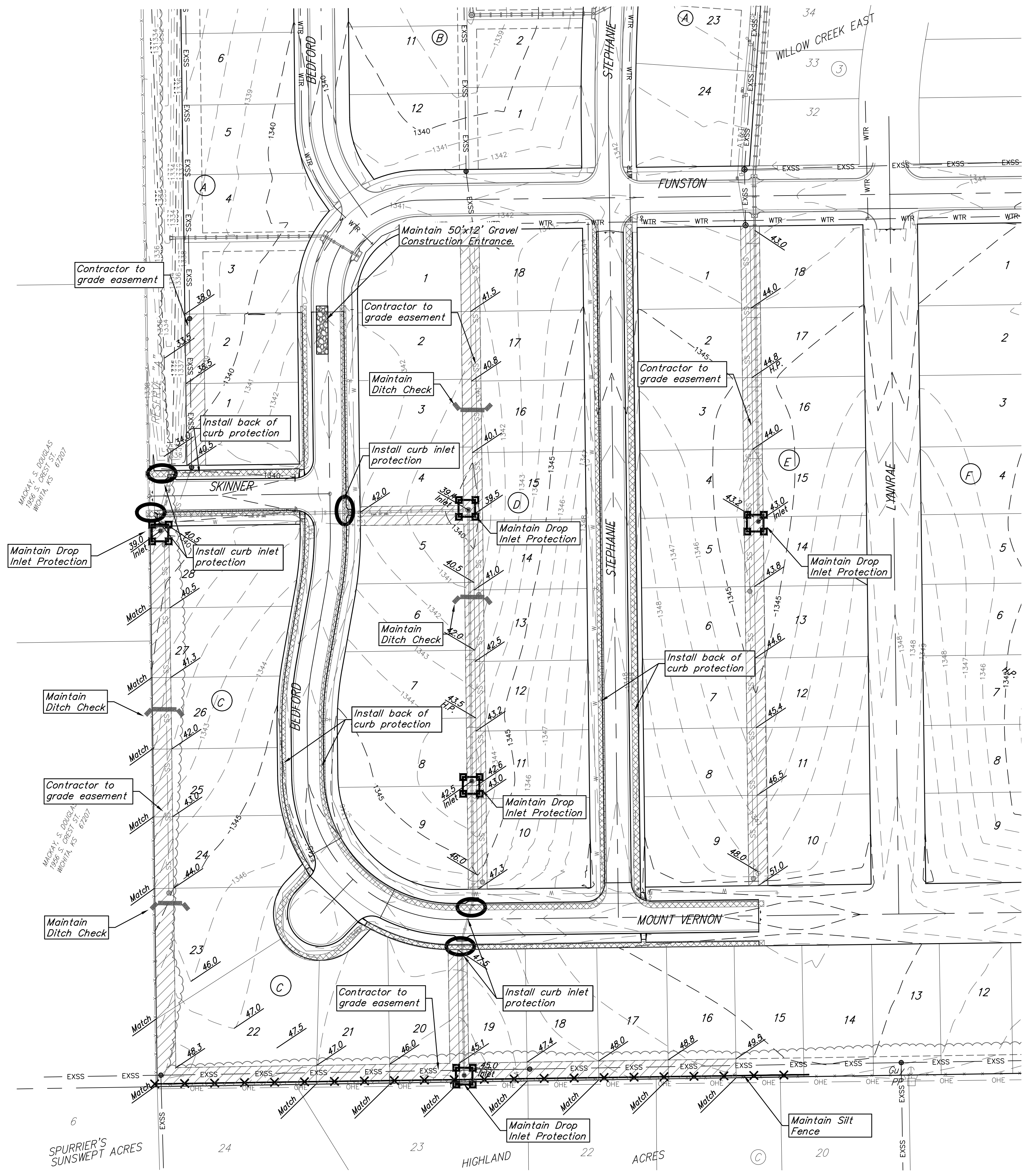


BENCHMARKS:
 Brass benchmark disc in top of curb, east of wheelchair ramp NE cor. of Funston and Lynrae Elev. = 1343.69 NAVD88

Brass benchmark disc in top of curb, north of wheelchair ramp NW cor. of Funston and Herrington Elev. = 1344.71 NAVD88



EROSION CONTROL NOTES:

- Contractor shall make sure all erosion control is in place before project is accepted. This plan represents the minimum standard. Any additional erosion control measures shall be installed by the Contractor as needed.
- Removal of Gravel Construction Entrance for pavement construction shall be included in bid item "Site Clearing"
- All areas disturbed during construction shall be seeded, mulched, and fertilized as per Cover Sheet General Notes.

EROSION CONTROL MEASURE	INSTALL	MAINTAIN
CONSTRUCTION ENTRANCE (EA)	0	1
CURB INLET BARRIER (EA)	5	0
BACK OF CURB PROTECTION (LF)	3,889	0
DROP INLET PROTECTION (EA)	0	5
SILT FENCE (LF)	0	682
DITCH CHECK (EA)	0	4

* ALL EXISTING BMPs INCLUDING CONSTRUCTION ENTRANCE, SEDIMENT BARRIERS, SILT FENCE, CUT-OFF TRENCH, AND EROSION CONTROL MAT SHALL BE MAINTAINED AND REPAIRED IF NECESSARY.

= Easements To Be Graded

All Easement have been previously graded with the Storm Water Drain Project. The Contractor of this project shall "fine grade" all designated easements to the specified elevations.

The Contractor shall grade the easements as shown to the elevations given on the easement grading plan.

The Contractor shall 'straight' grade the easements between the elevations given. Where a callout designates 'Match', the Contractor will grade to the existing ground elevation.

Excess excavation from easement grading and from sanitary sewer construction shall be placed on the lots as indicated to the elevations shown.

All cost to be included in the Lump Sum bid item "Easement Grading"



BAUGHMAN COMPANY

315 Ellis St.
 Wichita, KS 67211
 316-262-7271
 BaughmanCo.com

WILLOW CREEK EAST 3RD ADDITION - PHASE II

EROSION CONTROL

Street Paving Improvements

PROJECT NUMBER:
472-85507

DESIGN: DMV DRAWN: JAK

DATE: 6/21/21

SHEET **14** OF **27**

File: E:\Projects\Willow Creek East 3rd Addition_17-04-P283\Engineering\Phase 2\STR_20-10-E742\STR PLANS.dwg