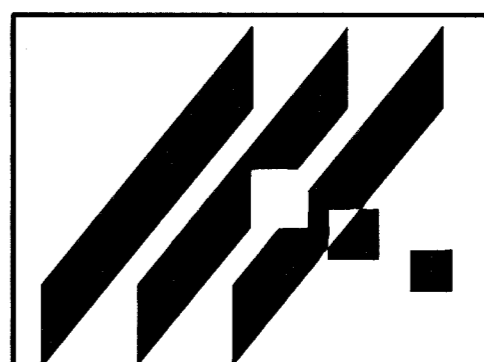
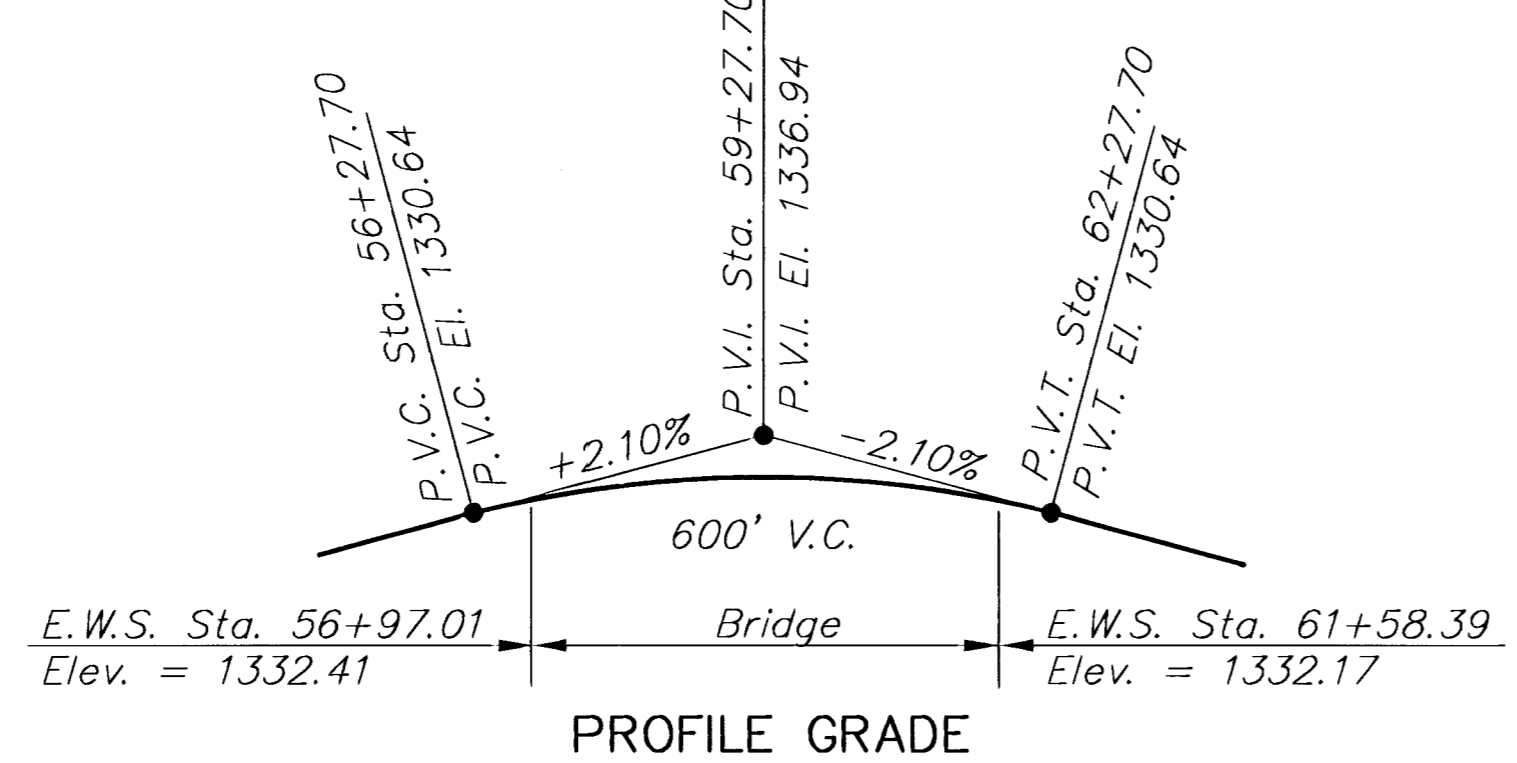
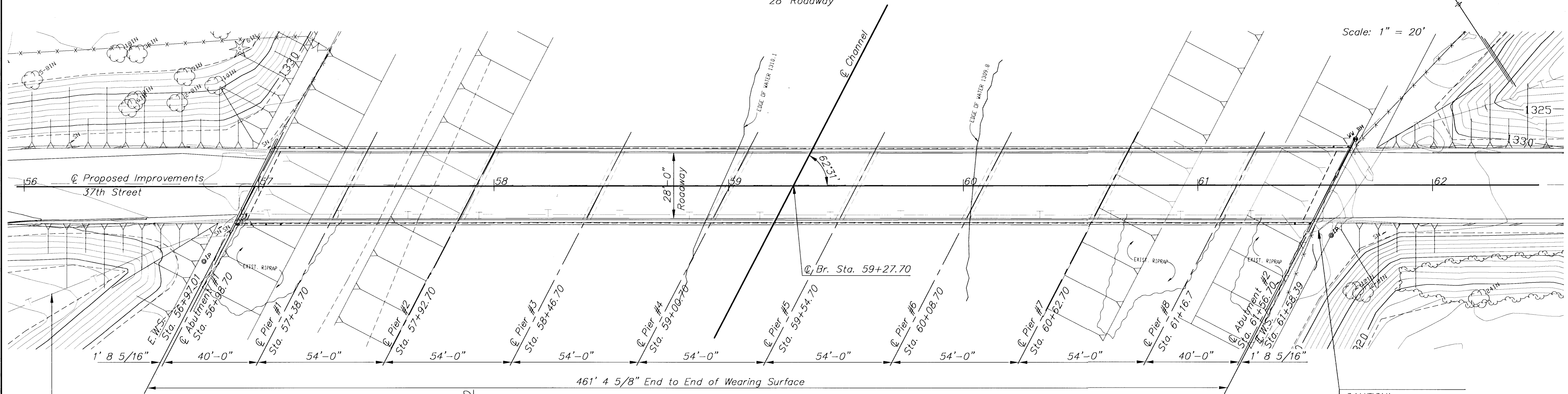


BM#3 3-Nail spike at 2nd HLP west of Seneca Street and south of 37th Street No. Elev. 1318.69

ELEVATION
40' - 7 @ 54' - 40' Cont. R.C. Girder Spans
Pile Bent Piers and Abutments
28' Roadway

BM#1 C.O.W. Bench Mark on top of concrete wing on southeast corner bridge over Big Ditch @ 37th St. N. and approx. S. Seneca Street Elev. 1332.14



MID-KANSAS ENGINEERING CONSULTANTS, INC.
411 N. WEBB ROAD
WICHITA, KS. 67206
316-684-9600

37th STREET NORTH BRIDGE
PROJECT NAME

EXISTING PLAN & PROFILE
SHEET TITLE

DESIGN BY: KJS	DRAWN BY: DPG/MLW	CHECKED BY: MJV
DATE: FEBRUARY 1998	JOB NO.: 96085	SHEET/OF: 3 / 23

G:\CIVIL\96085\DETAILS\96085.PLOTED BY DPG Tue May 12 13:22:29 1998