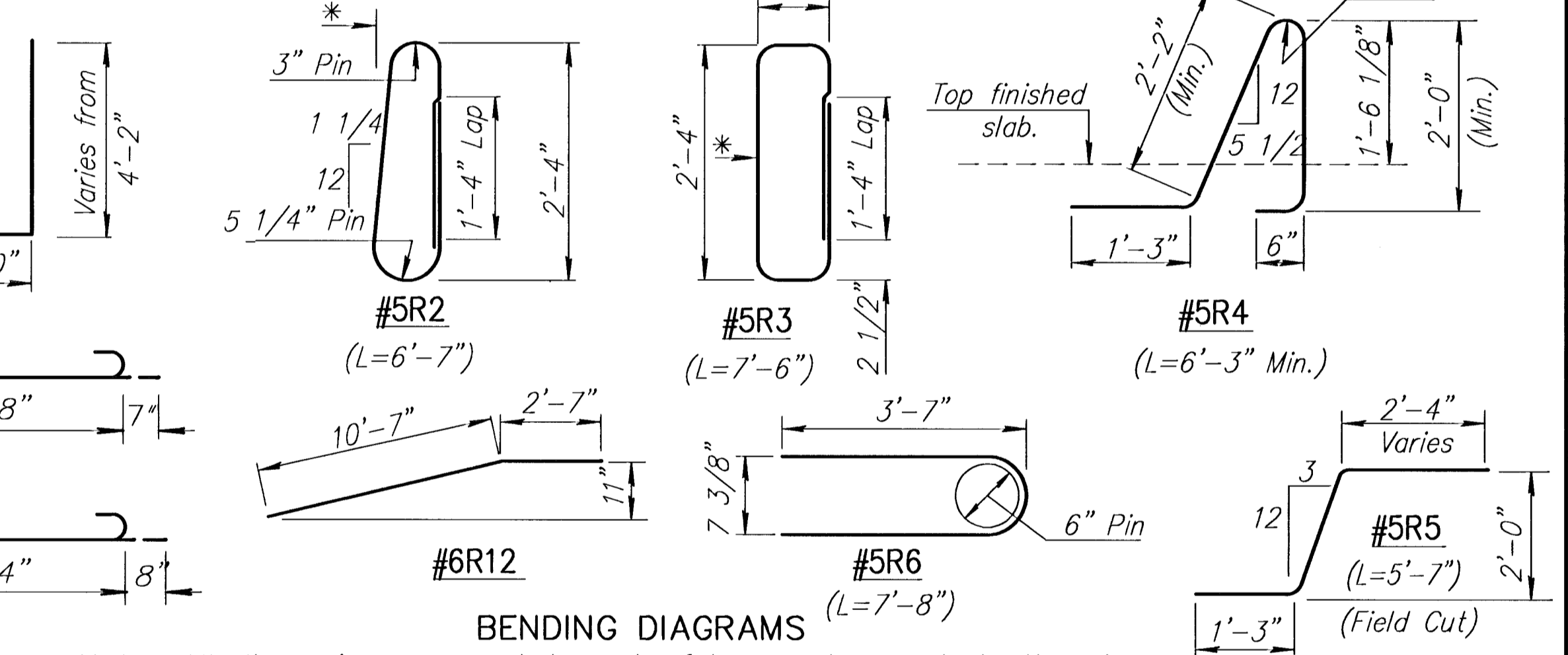
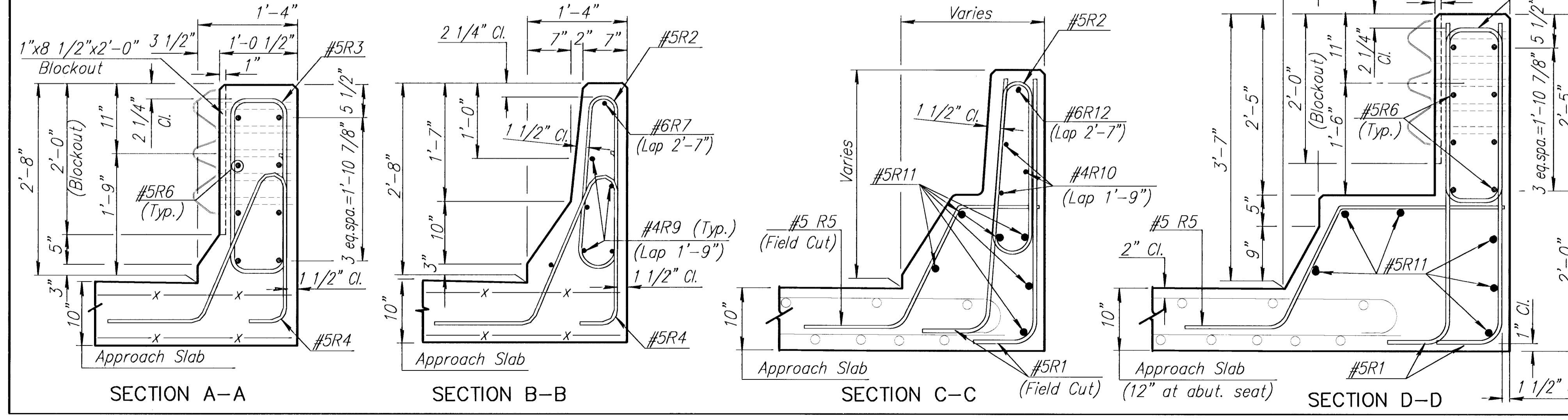
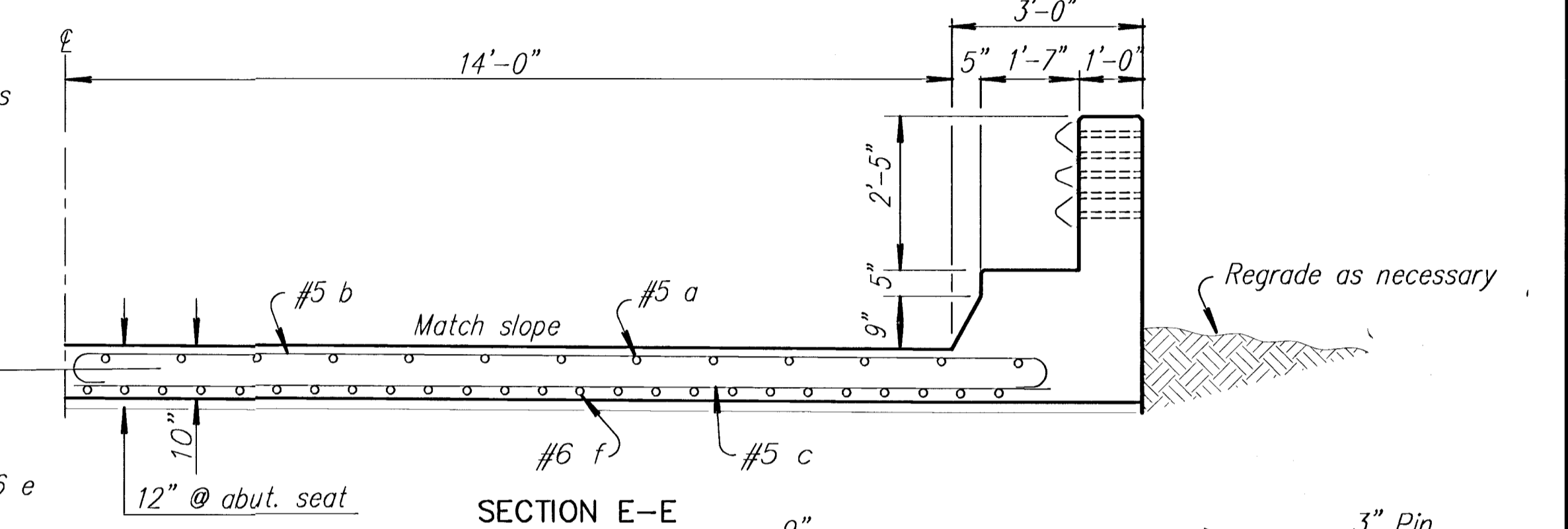
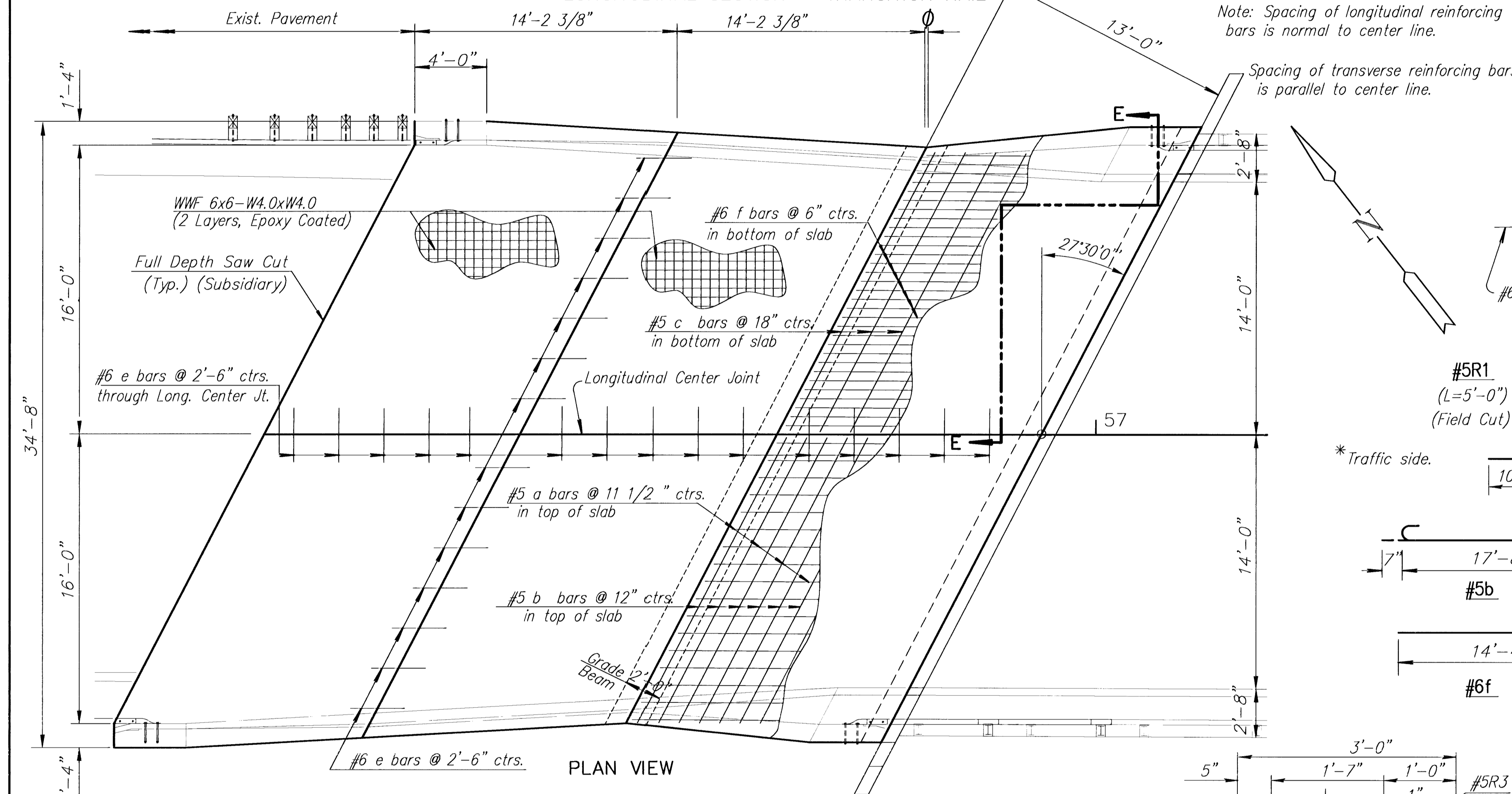


GENERAL NOTES:
 Special Concrete Bridge Approach shall be paid for as Sq. Yds. of Concrete Pavement (10" Unif.)(A.E.) and includes all work, including excavation and compaction to 95% of ASTM D698, and materials required to construct the approach slab as shown on this sheet.
 All work and materials required for installation of expansion joints shall be subsidiary to this bid item.
 All preformed joint material shall be installed perpendicular to pavement surface. Formed joints shall be edged with 1/4" radius tool for length of joint.
 At the Contractor's option #4x3'-0" tie bars @ 15" centers may be substituted for the #6 e bars at 2'-6" centers.
 All reinforcing steel and WWF shall be epoxy coated.
 Clearance from the face of concrete for all reinforcing steel shall be 2 inches unless noted otherwise.
 Standard reinforcing bar hooks in accordance with the latest ACI specifications shall be used throughout.
 Transition Approach Rail shall be subsidiary to Concrete Pavement (10" Unif.)(A.E.). See sheet 5 for additional reinforcing.
 All work and materials required for construction of the Grade beam shall be subsidiary to Concrete Pavement (10" Unif.)(A.E.). Some field bending and cutting of reinforcing will be required to fit the Transition Rail. Field cutting shall be with cold methods and repair of epoxy coating will be required.



Note: All dimensions are out to out of bars unless noted otherwise.

Approach Rail Bar Schedule												Approach Slab Bar Schedule						
Bar No.	R1	R2	R3	R4	R5	R6	R7	R8	R9	R10	R11	R12	a	b	c	e	f	g
76	68	36	66	38	32	2	4	12	6	12	2	34	30	20	30	64	6	
Size	#5	#5	#5	#5	#5	#6	#5	#4	#4	#5	#6	#5	#5	#5	#6	#6	#5	
Length	7	7	7	7	7	26'-9"	3'-3"	26'-0"	11'-9"	14'-3"	13'-2"	14'-4"	7	17'-8"	3'-0"	7	35'-9"	
Reinforcing Steel (Epoxy Coated)																		
Concrete Pavement (10" Unif.)(A.E.)																		
Expansion Joint																		
6942 lbs.																		
167 Sq. Yds.																		
36 Lin. Ft.																		

Note: Quantities listed for one approach slab only. Two required per bridge.
 Reinforcing steel and joint lengths shown for information only.

37TH STREET NORTH BRIDGE
 PROJECT NAME

APPROACH SLAB & TRANSITION RAIL
 SHEET TITLE

MID-KANSAS ENGINEERING CONSULTANTS, INC.
 411 N. WEBB ROAD
 WICHITA, KS. 67206
 316-684-9600

KJS DESIGN BY
DPG DRAWN BY
APRIL 1998 DATE
96085 JOB NO.
4 / 23 SHEET/OF

6: CIVIL 96085 DETAILS 96085AS Tue May 12 13:23:35 1998 PLOTTED BY DRG