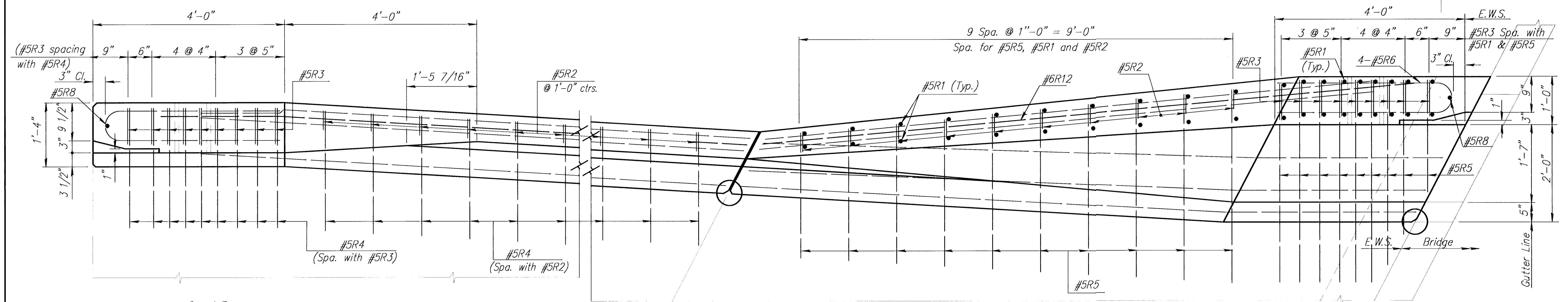
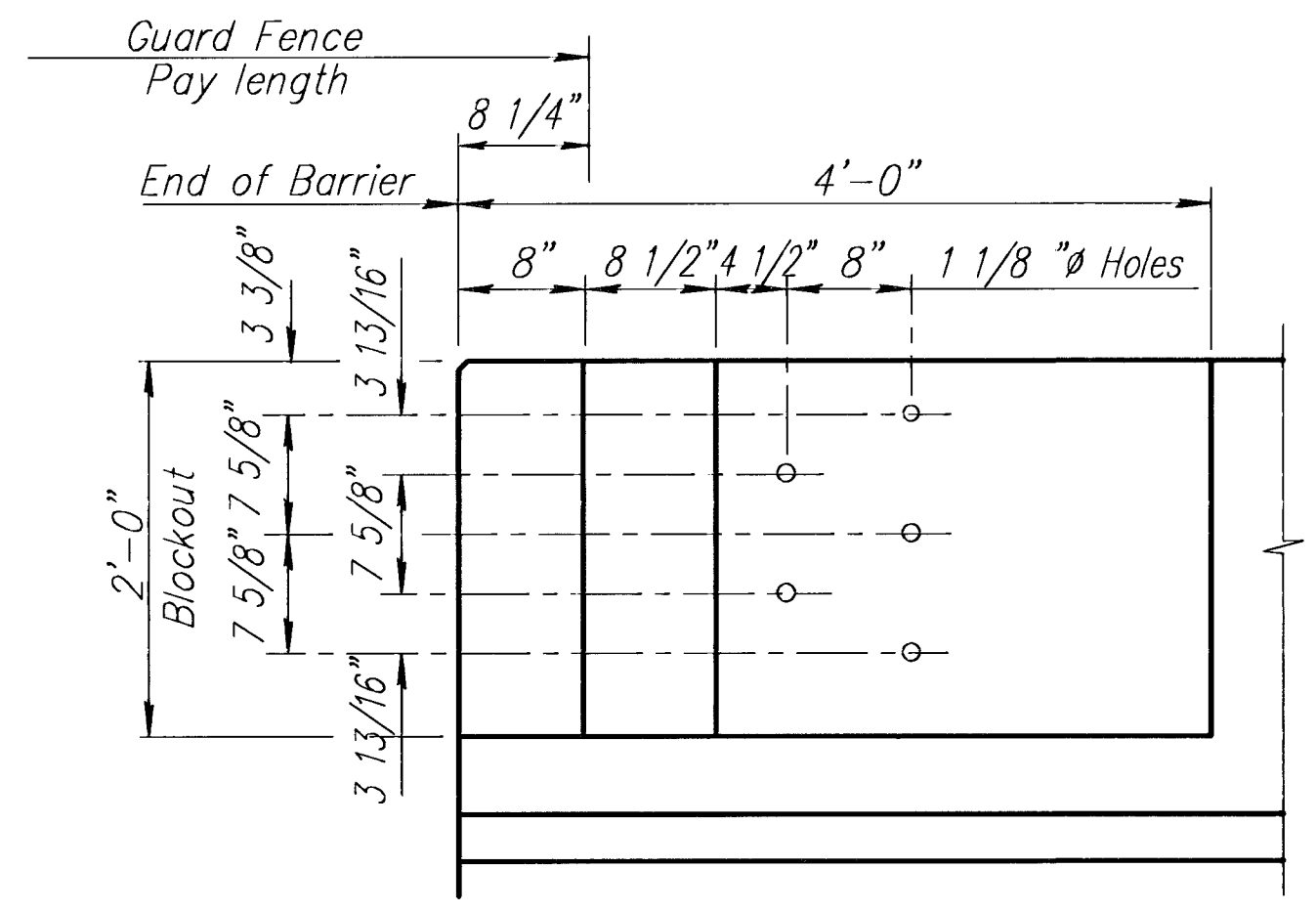


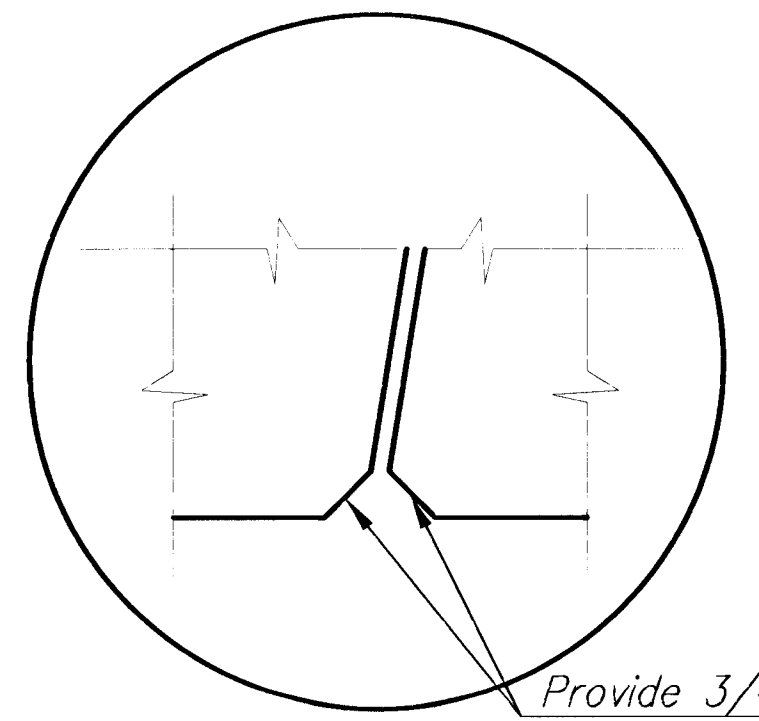
ELEVATION OF CONCRETE TRANSITION RAIL



PLAN OF CONCRETE TRANSITION RAIL

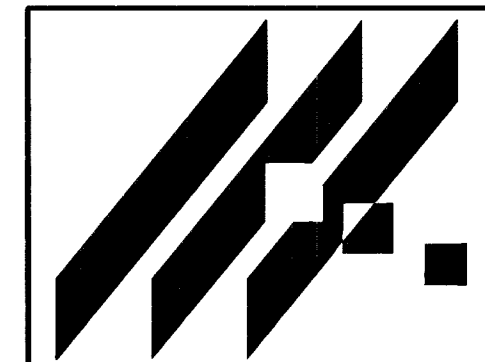


DIMENSIONS FOR END RAIL



CHAMFER DETAIL

Provide 3/4" Chamfer @ Traffic Face of Joint (Typ.)



37TH STREET NORTH BRIDGE
PROJECT NAME

TRANSITION RAIL DETAILS
SHEET TITLE

MID-KANSAS ENGINEERING
CONSULTANTS, INC.
411 N. WEBB ROAD
WICHITA, KS. 67206
316-684-9600

KJS
DESIGN BY.

DPG
DRAWN BY.

MJV
CHECKED BY.

APRIL 1998
DATE

96085
JOB NO.

5 / 23
SHEET / OF

G:\CIVIL\96085\DETAILS\96085TR Tue May 12 13:24:29 1998 PLOTTED BY DPG