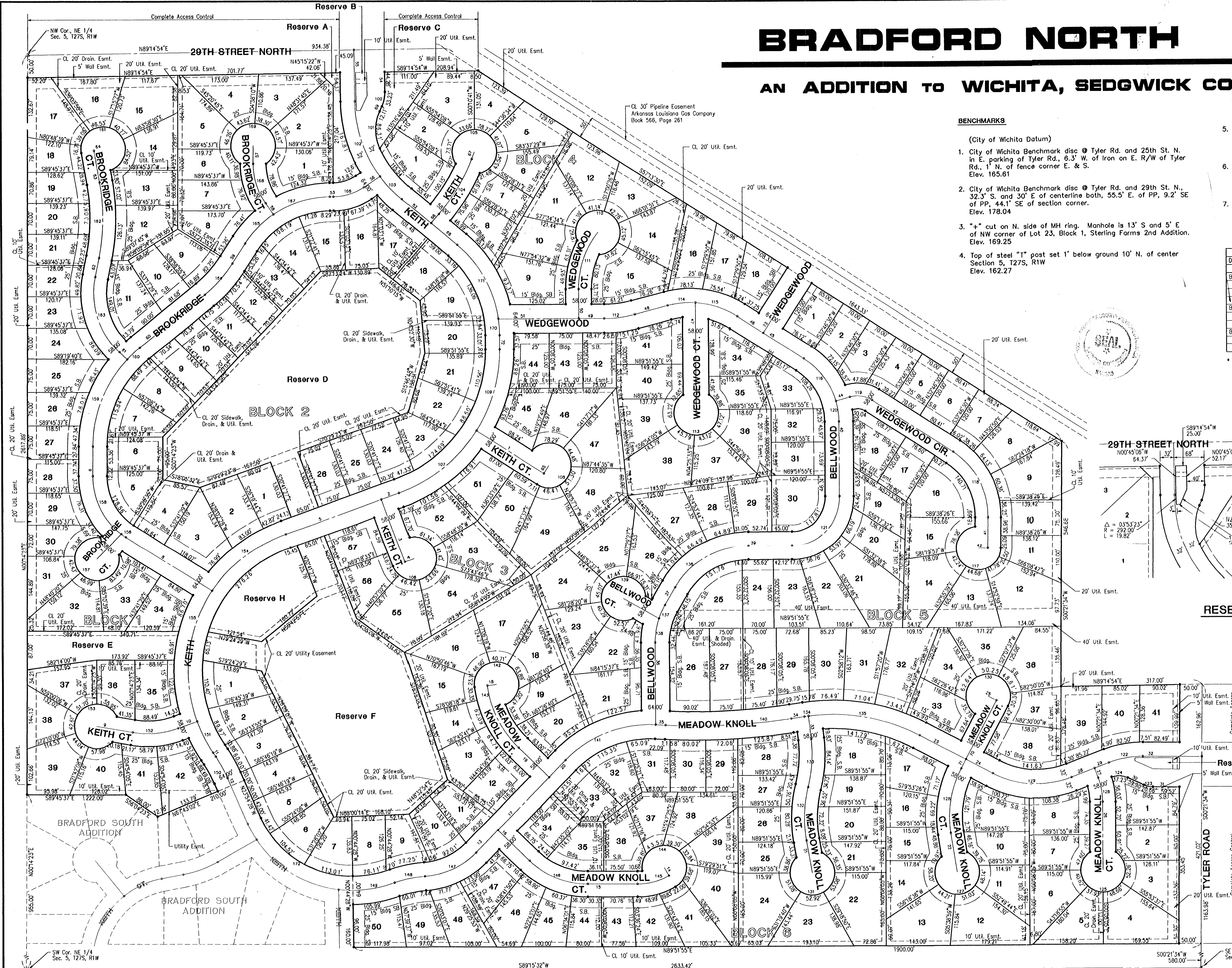


BRADFORD NORTH

AN ADDITION TO WICHITA, SEDGWICK COUNTY, KANSAS



BENCHMARKS

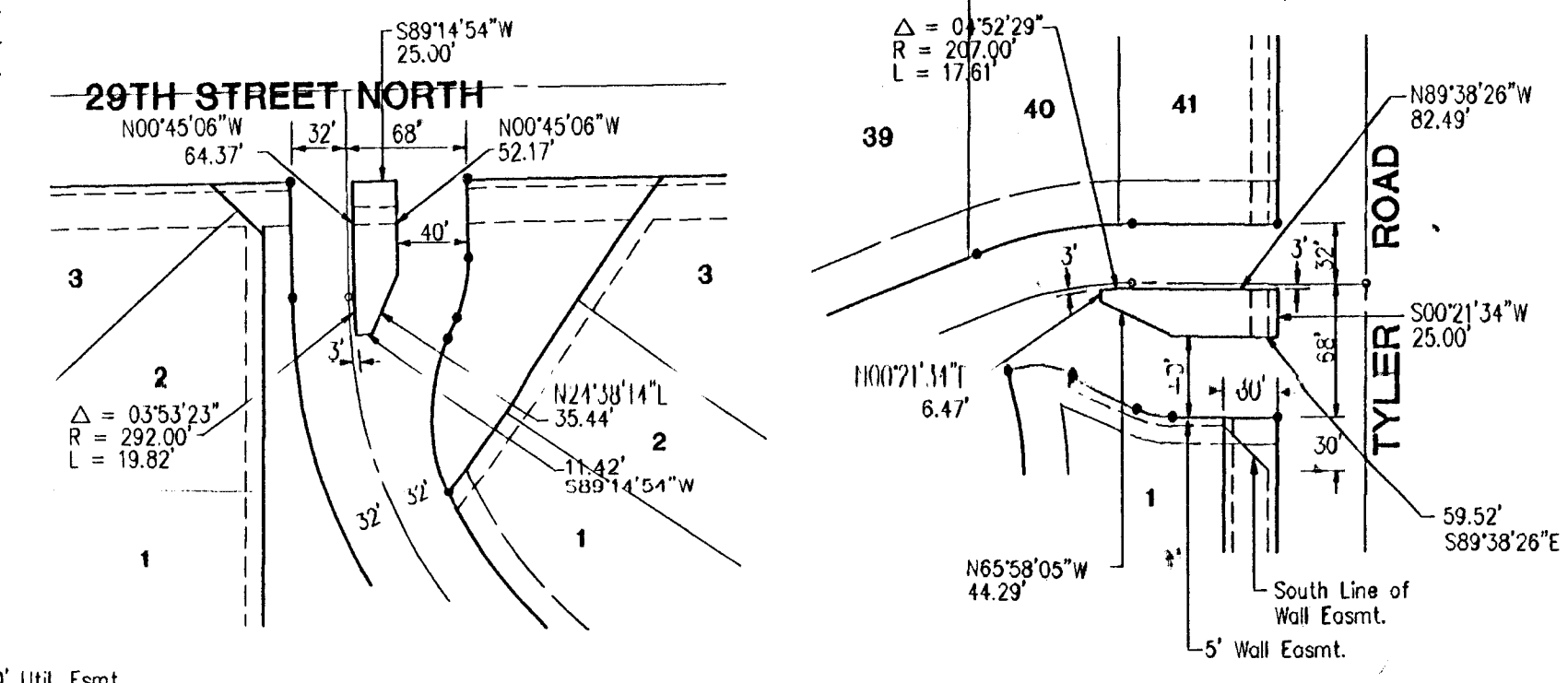
(City of Wichita Datum)

- City of Wichita Benchmark disc @ Tyler Rd. and 25th St. N. in E. parking of Tyler Rd., 6.3' W. of Iron on E. R/W of Tyler Rd., 1' N. of fence corner E. & S. Elev. 165.61
- City of Wichita Benchmark disc @ Tyler Rd. and 29th St. N., 32.3' S. and 30' E. of centerline both, 55.5' E. of PP, 9.2' SE of PP, 44.1' SE of section corner. Elev. 178.04
- "+" cut on N. side of MH ring. Manhole is 13' S and 5' E of NW corner of Lot 23, Block 1, Sterling Farms 2nd Addition. Elev. 169.25
- Top of steel "T" post set 1' below ground 10' N. of center Section 5, T27S, R1W Elev. 162.27

- Top of steel "T" post set 6" below ground, 2' E of N-S Fence, 3' E and 24.5' N of W 1/16 Corner of NE Cor. Sect. 5, T27S R1W. Elev. 162.92
- "+" cut on top of conc. headwall at entrance to gas line valve yard, 1160' ± E. of N 1/4 Cor. Sec 5, T27S, R1W, on S. side 29th St. N. E. elev. 163.45
- RR spike in PP, W side Tyler Rd., on N. side entrance to 2759 N. Tyler Rd. Elev. 175.44

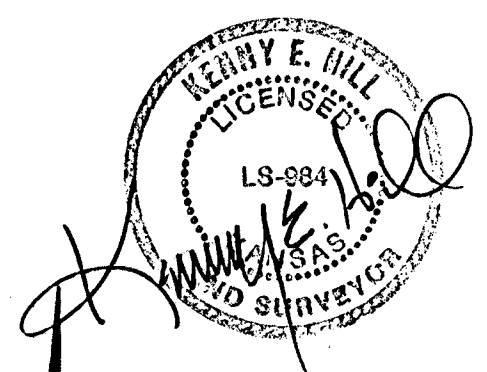
DESCRIPTION	REQUIRED MINIMUM BUILDING ELEVATIONS	
	MIN. FLOOR ELEV.	MIN. LOW OPENING ELEV.
	CITY DATUM	M.S.L.
BLOCK 1		
Lots 1-31	163.7	1351.1
Lots 32-37	163.7	1351.1
Lots 38-40	163.7	1351.1
BLOCK 2		
Lots 2-15	163.7	1351.1
Lots 16-26	163.7	1351.1
BLOCK 3		
Lots 1-16	166.5	1353.9
Lots 55-57	166.5	1353.9

No building permits are to be issued for Lots 1 through 39, Block 1 or Lots 2 through 15, Block 2, unless the lowest floor can be constructed above 163.7 City Datum (1351.1 M.S.L.) or unless the City of Wichita has received a letter of map revision from FEMA which will allow buildings to be constructed at the lowest opening listed in the accompanying table.

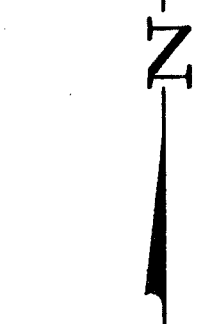


RESERVE B and G DETAILS

NO SCALE



1-16-96



SCALE: 1" = 100'

PROJECT NO. 472-82681 & 488-82780

INDEX CODE 781099 & 784805

LIBRARY COPY
 SEDGWICK COUNTY, KANSAS
 REGISTER OF DEEDS
 LARRY CONSLOR

SHEET 5 of 5

48.00

31004 348W-PLAT Mon Jan 22 16:45:42 1996 8111 Fax Poe & Assoc.