

Time is: 11:43:16
 Date is: 8-17-1993
 Drawing File: C:\DCA\499\TIT-LS
 R11 c2

MAPLE STREET LANDSCAPING

THE CITY OF WICHITA, KANSAS

MICHAEL E. LINDEBAK, P.E. - CITY ENGINEER

PAVING PROJECT NO. 472-82179
 INDEX CODE 705640

INDEX

DESCRIPTION	SHEET NOS.
TITLE SHEET	1
LANDSCAPE PLANS	2-8

SPECIFICATIONS & NOTES

Unless specified otherwise by these specifications, requirements for grass seeding and plant installation shall follow "City of Wichita, Kansas - Standard Specifications for Seeding and Landscaping."

MATERIALS

- MULCH for trees to be chipped wood "Tree Service" mulch not infested with insects and disease.
- FERTILIZER for tree plantings and seeded grass areas to be a synthetic type with a 12-20-12 or similar analysis.
- SEED MIX for permanent seeding of grass areas to be a fine-bladed fescue blend approved by the Engineer.
- PLANTS and MATERIALS shall be approved by the Engineer. Approval of substitutions shall be determined by the Engineer.

TREE INSTALLATION

- Fall season for planting trees shall be September 15 to December 15. Spring season for planting shall be as soon as the ground can be worked to not later than June 1. Engineer shall approve any change of specified dates for tree planting.
- Contractor shall flag tree locations for the Engineer's approval before planting. Use fluorescent orange wire stake flags or other approved color for marking.
- See tree planting detail this sheet for installation methods.
- Soil backfill to be made of excavated soil from planting hole worked to a friable consistency before backfilling. Incorporate fertilizer into backfill at manufacturer's recommended rate.
- Water trees to settle backfill. Reshape soil saucers and level soil surface as shown in detail.

GRASS INSTALLATION

- All disturbed areas due to construction activities shall be seeded.
- Fall season for seeding grass shall be September 1 to October 15. Spring season for seeding shall be as soon as the ground can be worked to not later than May 1. Engineer shall approve any change of specified dates for seeding.
- Till soil 2-3 inches deep to prepare seedbed. The area shall be free of large clods, weeds, stones and other objects that would hamper planting and maintenance operations.
- Apply fertilizer at manufacturer's recommended rate.
- Drill or hydroseed grass at the rate of 10 lbs./1000 S.F. Engineer shall approve method for drilling or hydroseeding. When seed is drilled, apply native prairie hay at the rate of 2 1/2 tons per acre.

ACCEPTANCE/GUARANTEE/PAYMENT

- Acceptance, Guarantee and Payment for grass seeding and plant installation shall follow "City of Wichita - Standard Specifications for Seeding and Landscaping." Verify requirements for acceptance with City Engineer due to revised seeding and planting seasons specified.

GROUND COVER

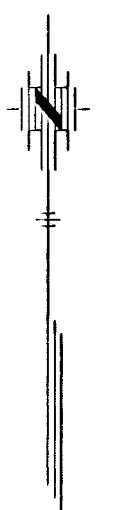
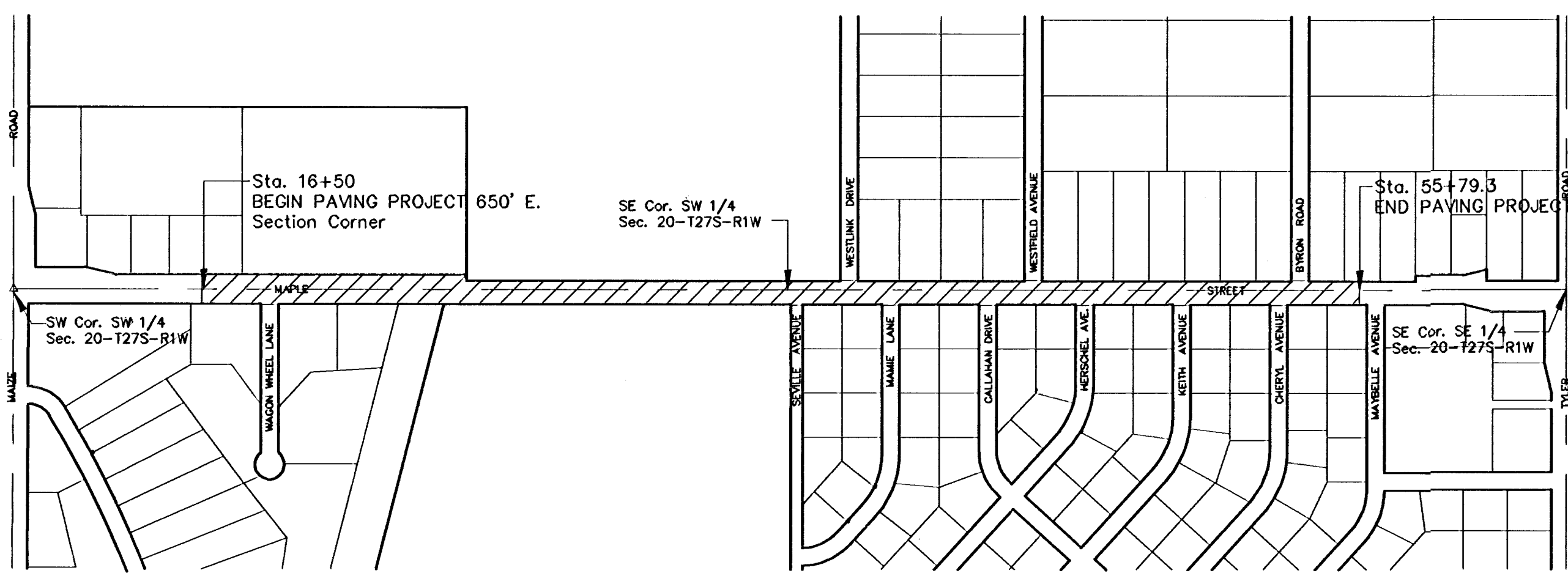
Hall's Purpleleaf Honeysuckle Groundcover (330 Plants - 1 gallon container at 3'-6" o.c.) planted with an approved weed barrier fabric along slope. Install fabric following manufacturer specifications.
WEED BARRIER FABRIC IS SUBSIDIARY TO THE HONEYSUCKLE GROUND COVER PAY ITEM OF WORK.

GRASS AREA NOTE:

The approximate area within the street Right-of-Way to be seeded is 1.8 acres. Grass seeding will be bid on a lump sum basis and will include all disturbed areas due to construction activities.

PLANT LIST

Quan.	Common Name/Botanical Name	Size	Specific
8	Amur Maple	1 3/4 - 2" Cal.	Single-stem
	Acer ginnala		B&B
4	London Planetree 'Bloodgood'	1 3/4 - 2" Cal.	B&B
	Platanus x acerifolia cv.		
3	Washington Hawthorn	1 3/4 - 2" Cal.	Single-stem, Low
	Crataegus phaenopyrum		Branched, B&B
7	'Skyline' Honeylocust	1 3/4 - 2" Cal.	B&B
	Gleditsia triacanthos var. inermis cv.		
3	'Capital' Pear	1 3/4 - 2" Cal.	B&B
	Pyrus Calleryana cv.		
3	Sawtooth Oak	1 3/4 - 2" Cal.	B&B
	Quercus acutissima		
7	Austrian Pine	5 - 6'	B&B
	Pinus nigra var. nigra		
4	Canaert Juniper	7 - 8'	B&B
	Juniperus virginiana cv. 'Canaertii'		



Scale 1" = 400'

AUGUST 1993

PLANS PREPARED

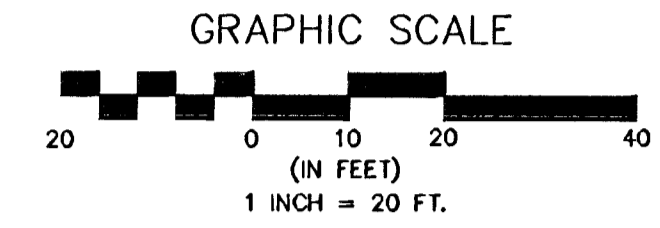
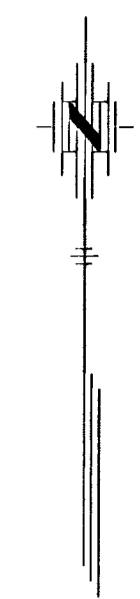
BY

POE & ASSOCIATES OF KANSAS, INC.
 CONSULTING ENGINEERS
 434 N. Oliver Suite 110 Wichita KS 67208 316/865-4114

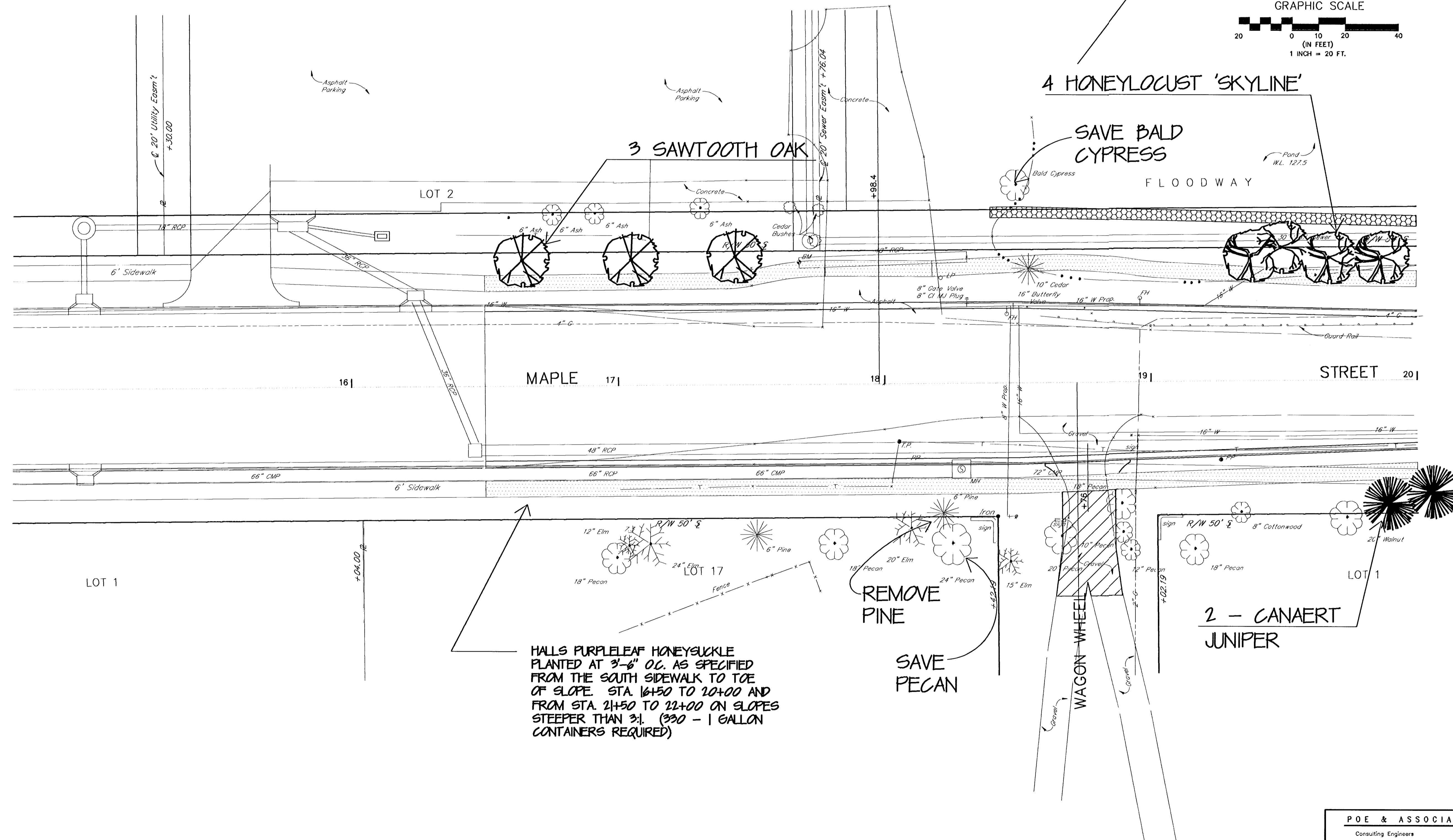
LANDSCAPE ARCHITECTURE BY: JONES PROFESSIONAL ASSOCIATION

SHEET 1 OF 8

S:\DCA\499\TIT-LS Tue Aug 17 12:41:08 1993 8:11 Fox-Poe & ASSOC.



VIEW TO LAKE



HALLS PURPLELEAF HONEYSUCKLE PLANTED AT 3'-6" O.C. AS SPECIFIED FROM THE SOUTH SIDEWALK TO TOE OF SLOPE STA. 16+50 TO 20+00 AND FROM STA. 21+50 TO 22+00 ON SLOPES STEEPER THAN 3:1. (300 - 1 GALLON CONTAINERS REQUIRED)

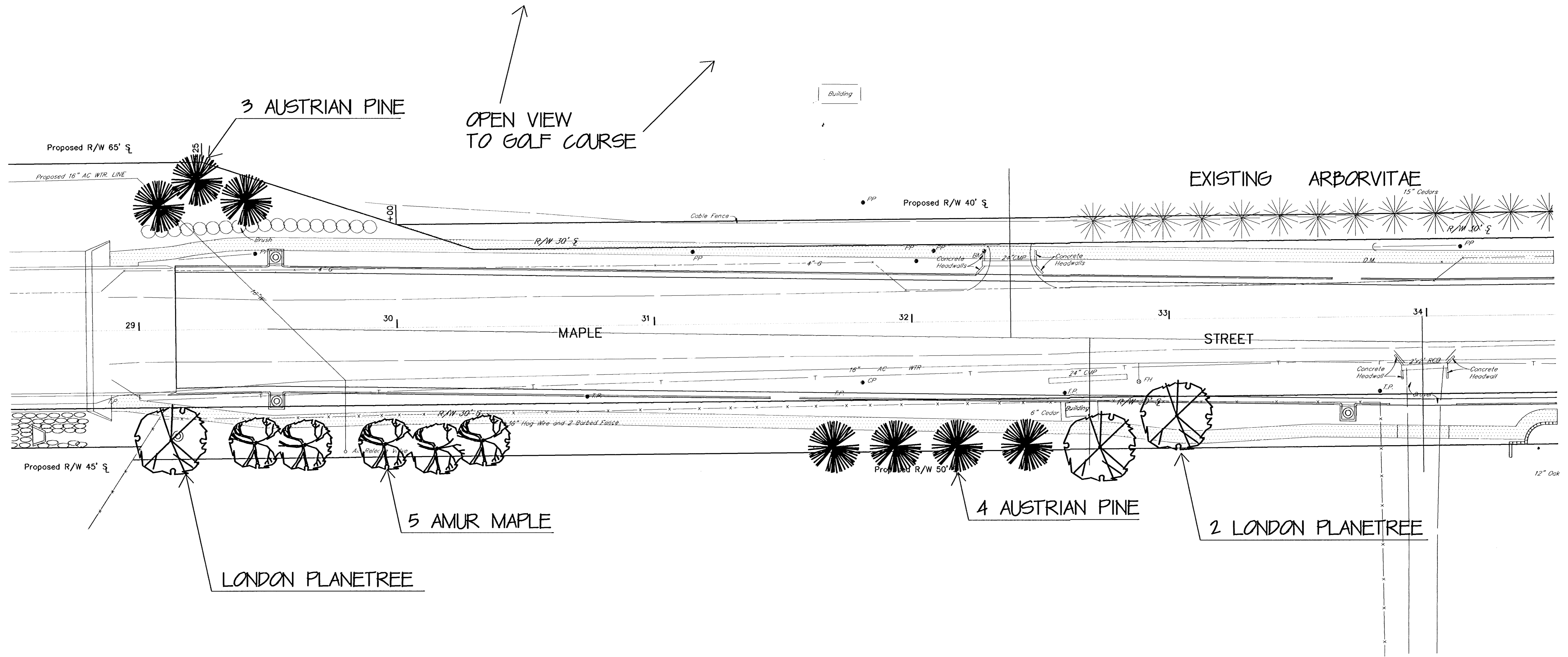
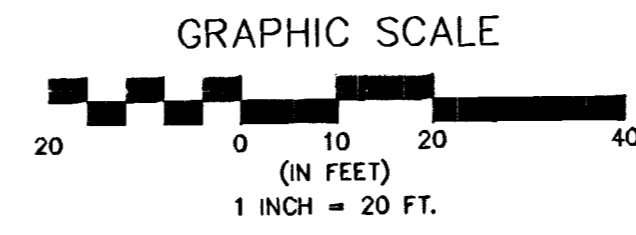
REMOVE PINE
 SAVE PECAN

2 - CANAERT JUNIPER

LANDSCAPE ARCHITECTURE BY: JONES PROFESSIONAL ASSOCIATION

POE & ASSOCIATES OF KANSAS, INC. Consulting Engineers 434 N. Oliver Suite 110 ■ Wichita KS 67208 ■ 316/685-4114	
ENGINEER: K. Hill ENG. TECH: I. Brooks CAD TECH: S. Schmidt	MAPLE STREET LANDSCAPE PLAN CITY OF WICHITA, KANSAS
DATE: April 1993 SHEET: 2 of 8	PROJECT NO. 472-82179 INDEX CODE

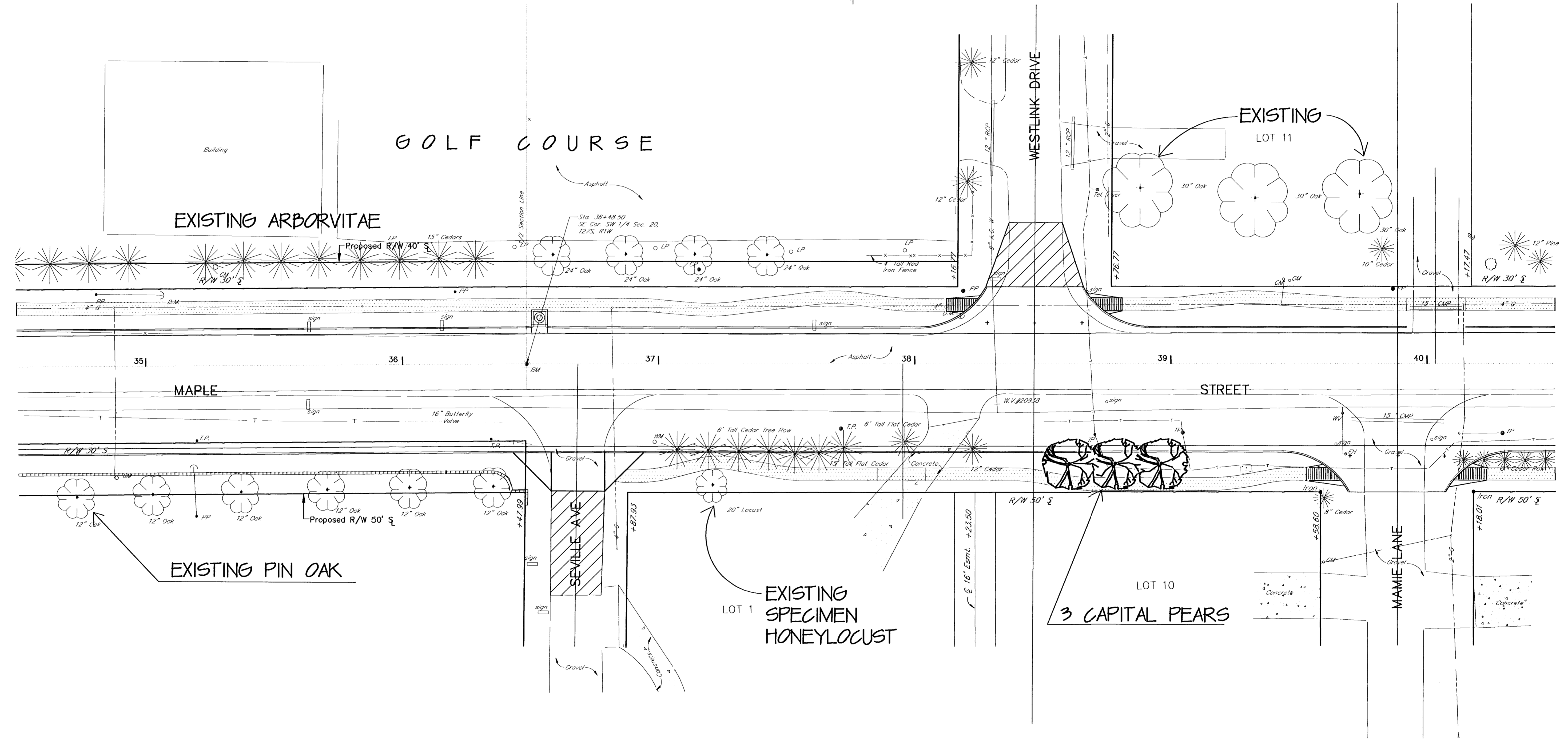
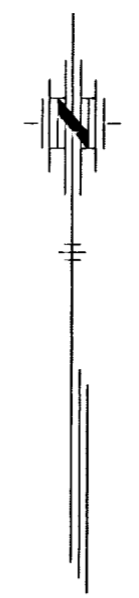
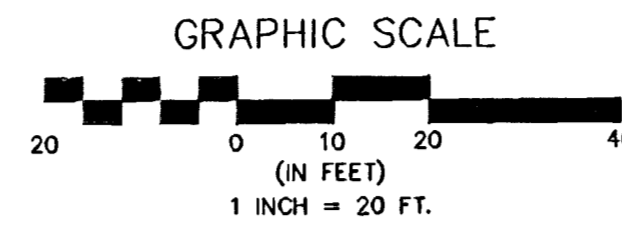
Time is: 15:55:57
 Date is: 8-17-1993
 Drawing File: C:\DCA\F\499\LS3
 R11.G2



LANDSCAPE ARCHITECTURE BY: JONES PROFESSIONAL ASSOCIATION

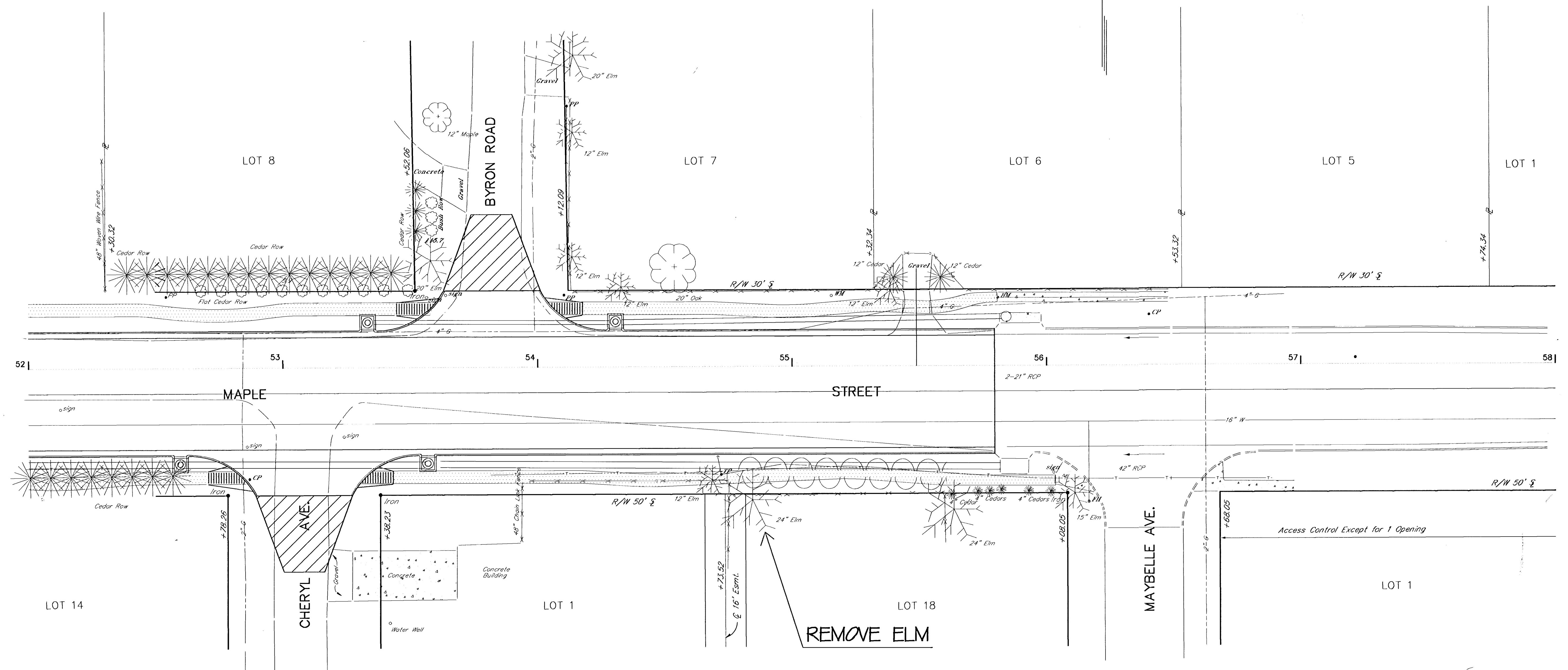
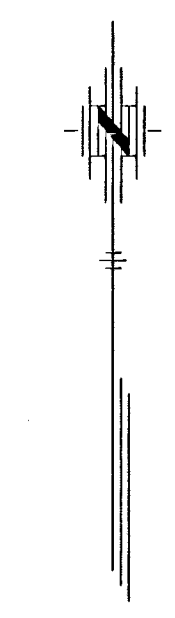
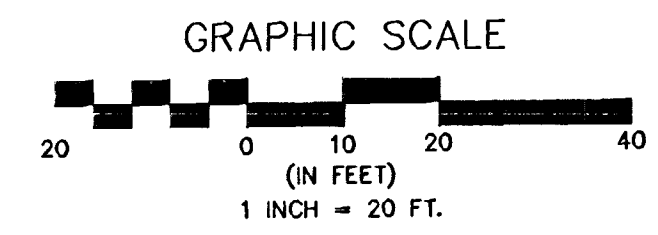
POE & ASSOCIATES OF KANSAS, INC. Consulting Engineers 434 N. Oliver Suite 110 ■ Wichita KS 67208 ■ 316/685-4114	
ENGINEER : K. Hill ENG. TECH. : I. Brocks CAD TECH : S. Schmidt	MAPLE STREET LANDSCAPE PLAN CITY OF WICHITA, KANSAS
DATE : April 1993 SHEET 4 of 8	PROJECT NO. 472-82179 INDEX CODE

F:\APPSP\DCAP\499\LS3 Tue Aug 17 13:48:52 1993 8:11 Fox-POE & ASSOC.



POE & ASSOCIATES OF KANSAS, INC. Consulting Engineers 434 N. Oliver Suite 110 ■ Wichita KS 67208 ■ 316/685-4114	
ENGINEER : K. Hill ENG. TECH. : T. Brooks CAD TECH. : S. Schmidt DATE : April 1993 SHEET : 5 of 8	MAPLE STREET LANDSCAPE PLAN CITY OF WICHITA, KANSAS PROJECT NO. 472-82179 INDEX CODE

Time is: 11:23
 Date is: 8-17-1993
 Drawing File: C:\DCA\1499\157
 RT1 12



F:\APPS\1499\157 Tue Aug 17 15:34:43 1993 Tammy Brouck

POE & ASSOCIATES OF KANSAS, INC. Consulting Engineers 434 N. Oliver Suite 110 ■ Wichita KS 67208 ■ 316/685-4114	
ENGINEER : K. Hill	MAPLE STREET LANDSCAPE PLAN CITY OF WICHITA, KANSAS
ENG. TECH. : T. Brooks	
CAD TECH. : S. Schmidt	
DATE : April 1993	
SHEET 8 of 8	PROJECT NO. 472-82179 INDEX CODE

LANDSCAPE ARCHITECTURE BY: JONES PROFESSIONAL ASSOCIATION