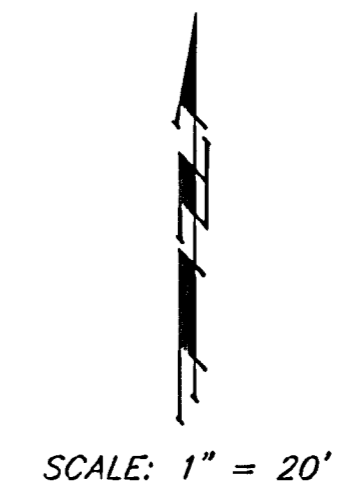
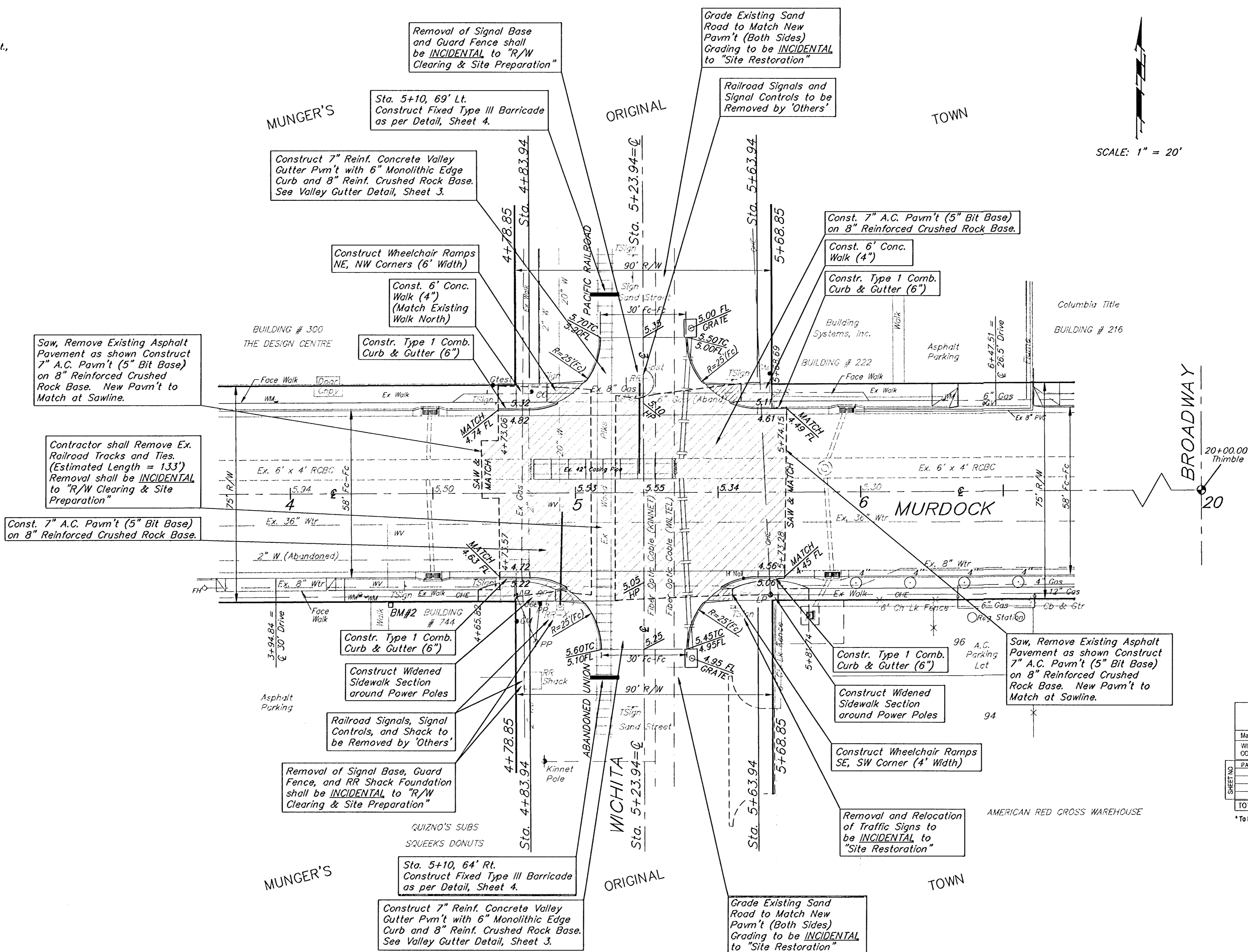


BENCHMARKS

BM #1 - Little Arkansas River & Murdock, Brass Cap on Walk, NW Corner of Bridge, Stamped Elev. 1306.22 MSL, Use Elev. = 1306.38 MSL, Use Elev. = 118.98 City Datum

BM #2 - "□" On Top of Brick Ledge on the NW Corner of Bldg. #746 No. Waco, @ Sta. 4+34.5, 38' Rt. of the Centerline of Murdock, Elev. = 117.18 City Datum



Saw, Remove Existing Asphalt Pavement as shown Construct 7" A.C. Pav't (5" Bit Base) on 8" Reinforced Crushed Rock Base. New Pav't to Match at Sawline.

Contractor shall Remove Ex. Railroad Tracks and Ties. (Estimated Length = 133') Removal shall be INCIDENTAL to "R/W Clearing & Site Preparation"

Const. 7" A.C. Pav't (5" Bit Base) on 8" Reinforced Crushed Rock Base.

Const. Type 1 Comb. Curb & Gutter (6")

Construct Widened Sidewalk Section around Power Poles

Railroad Signals, Signal Controls, and Shack to be Removed by 'Others'

Removal of Signal Base, Guard Fence, and RR Shack Foundation shall be INCIDENTAL to "R/W Clearing & Site Preparation"

Sta. 5+10, 64' Rt. Construct Fixed Type III Barricade as per Detail, Sheet 4.

Construct 7" Reinf. Concrete Valley Gutter Pav't with 6" Monolithic Edge Curb and 8" Reinf. Crushed Rock Base. See Valley Gutter Detail, Sheet 3.

Grade Existing Sand Road to Match New Pav't (Both Sides) Grading to be INCIDENTAL to "Site Restoration"

Railroad Signals and Signal Controls to be Removed by 'Others'

Const. 7" A.C. Pav't (5" Bit Base) on 8" Reinforced Crushed Rock Base.

Const. 6' Conc. Walk (4")

Const. Type 1 Comb. Curb & Gutter (6")

Const. Type 1 Comb. Curb & Gutter (6")

Construct Widened Sidewalk Section around Power Poles

Construct Wheelchair Ramps SE, SW Corner (4' Width)

Removal and Relocation of Traffic Signs to be INCIDENTAL to "Site Restoration"

Saw, Remove Existing Asphalt Pavement as shown Construct 7" A.C. Pav't (5" Bit Base) on 8" Reinforced Crushed Rock Base. New Pav't to Match at Sawline.

PAVEMENT MARKING REMOVAL - PROJECT TOTALS (FOR INFORMATION ONLY) *

Material	Lineal Meters of Cold Plastic Tape				Standard Pre-Cut Symbol - Each		
	4"	8"	12"	34"	STD LT ARROW	STD RT ARROW	RAILROAD CROSSING
PAV1	0	0	0	0	82	0	0
TOTALS	0	0	0	0	82	0	0

* To Be Paid For As Lump Sum Bid Item "PAVEMENT MARKING & SIGNAGE"

PROJECT SIGNAGE QUANTITIES - PROJECT TOTALS (FOR INFORMATION ONLY) *

TYPE	SIGN FACE DESCRIPTION	LOCATION	INSTALL	RELOCATE	REMOVE
RT-1	STOP	4+85, 40' LL	1		
RT-1	STOP	5+64, 40' LL	1		
RT-1	STOP, DO NOT ENTER, ONE WAY	2+68, 40' RL	1		
RB-30	NO PARKING, F.O. CABLE	5+20, 83' LL	1		
RB-30	NO PARKING	5+20, 74' RL	1		
W10-1	RAILROAD CROSSING	3+59, 33' RL			1
W10-1	RAILROAD CROSSING	6+73, 32' LL			1
	F.O. CABLE SIGN	5+20, 75' LL	1		
	TYPE II BARRICADE	5+10, 69' LL	1		
	TYPE III BARRICADE	5+10, 64' RL	1		

* To Be Paid For As Lump Sum Bid Item "PAVEMENT MARKING & SIGNAGE"

NOTE:
Pavement To be Removed is Indicated By

PROJECT NUMBER 472-76-245-82026		SHEET NAME PAV1		ENGINEERING DIRECTORY P: MURDOCK	
DESIGN JFB/JMN	DRAWN TA/KWR	APPROVED	DATE SEPT 99	SCALE NOTED	BAUGHMAN NO 98-06-B100

PAVEMENT PLAN
MURDOCK & WICHITA INTERSECTION IMPROVEMENTS

BAUGHMAN COMPANY, P.A.
ENGINEERING, SURVEYING, & PLANNING
318-262-7271 • 315 ELLIS • WICHITA, KANSAS 67211

SHEET 5 OF 10