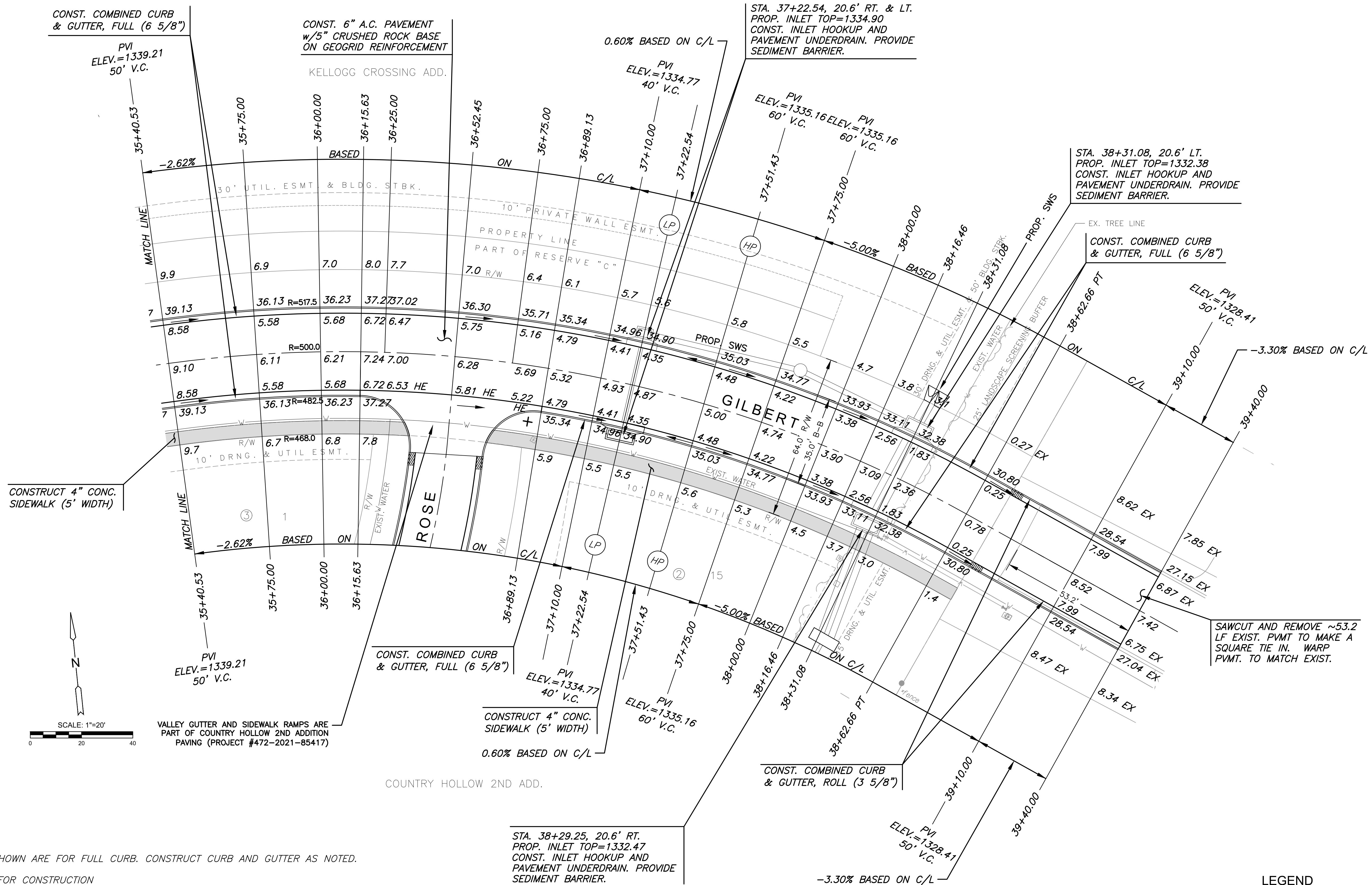
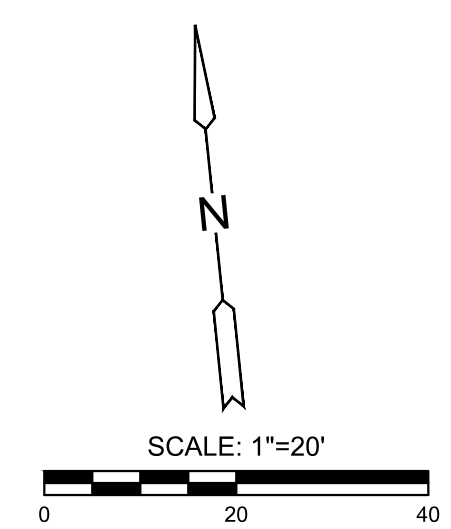


**KELLOGG CROSSING ADDITION**  
 PHASE 2 - GILBERT  
 PAVING & INCIDENTAL DRAINAGE FOR



CONSTRUCT 4\"/>



VALLEY GUTTER AND SIDEWALK RAMPS ARE PART OF COUNTRY HOLLOW 2ND ADDITION PAVING (PROJECT #472-2021-85417)

- NOTES:**
- TOP OF CURB ELEVATIONS SHOWN ARE FOR FULL CURB. CONSTRUCT CURB AND GUTTER AS NOTED.
  - REMOVE TREES AS NEEDED FOR CONSTRUCTION
  - ELECTRIC BOXES ARE IN CONFLICT W/ PROP. SIDEWALK. EVERGY IS AWARE OF THE NEED TO RELOCATE AND INTENDS TO MOVE THEIR UTILITY ALONG WITH AT&T AND COX INTO A COMMON TRENCH WITHIN THE PLATTED 10' UTILITY ESMT. CONTRACTOR TO CONSTRUCT GILBERT AND THEN CALL EVERGY, AT&T, AND COX TO RE-LOCATE ELECTRIC BOXES. AFTER ELECTRIC BOXES HAVE BEEN ADJUSTED, CONSTRUCT SIDEWALK AND INSTALL RESTORATION.**
  - ADJUST ALL WATER VALVE BOXES TO PROP. ELEVATIONS

SAWCUT AND REMOVE ~53.2 LF EXIST. PVMT TO MAKE A SQUARE TIE IN. WARP PVMT. TO MATCH EXIST.

**LEGEND**

 STREET SIGN & SIGN LOCATION (SEE SIGN ASSEMBLY TABLE FOR TYPE & STATION OF SIGN)

 5' TRANSITION FROM FULL TO ROLL CURB

©2021 MKEC Engineering All Rights Reserved  
www.mkec.com  
These drawings and their contents, including, but not limited to, all concepts, designs, & ideas are the exclusive property of MKEC Engineering (MKEC), and may not be used or reproduced in any way without the express consent of MKEC.

**GILBERT (CONT.)**

PROJECT NO.	472-2019-085526
DATE	JUNE 2021
SCALE	1"=20'
DESIGNED	CRM
DRAWN	CRM
CHECKED	GLA

NO.	REVISION	DATE

J:\PROJECTS\2021\171010468\_KELLOGG CROSSING\_17458\_CAD\SHOTS\05\_CIVIL\PAV\PHASE 2\17458-05-0201.DWG  
 PLOTTED: Friday, June 18, 2021 @ 10:59AM