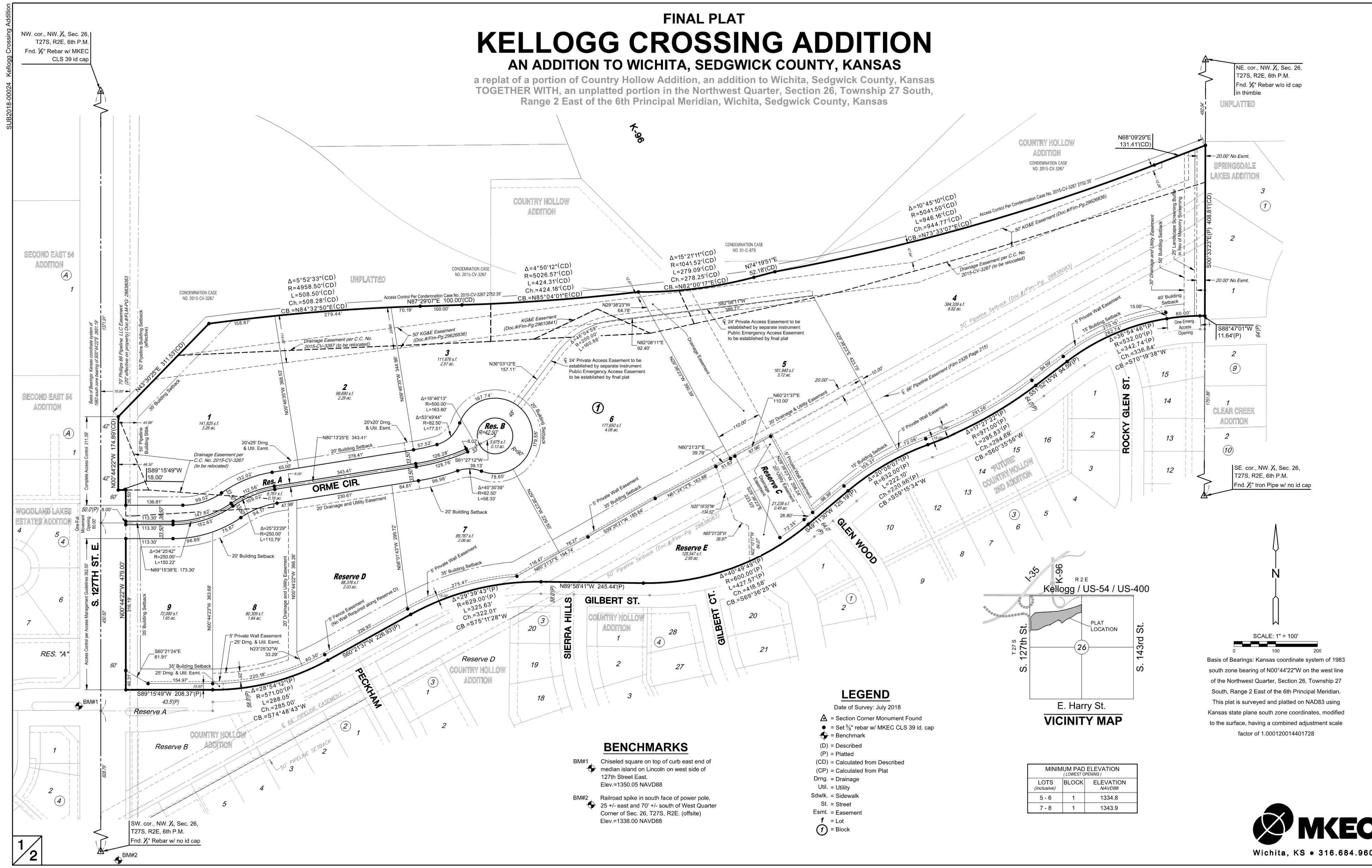


FINAL PLAT

KELLOGG CROSSING ADDITION

AN ADDITION TO WICHITA, SEDGWICK COUNTY, KANSAS
 a replat of a portion of Country Hollow Addition, an addition to Wichita, Sedgwick County, Kansas
 TOGETHER WITH, an unplatted portion in the Northwest Quarter, Section 26, Township 27 South,
 Range 2 East of the 6th Principal Meridian, Wichita, Sedgwick County, Kansas

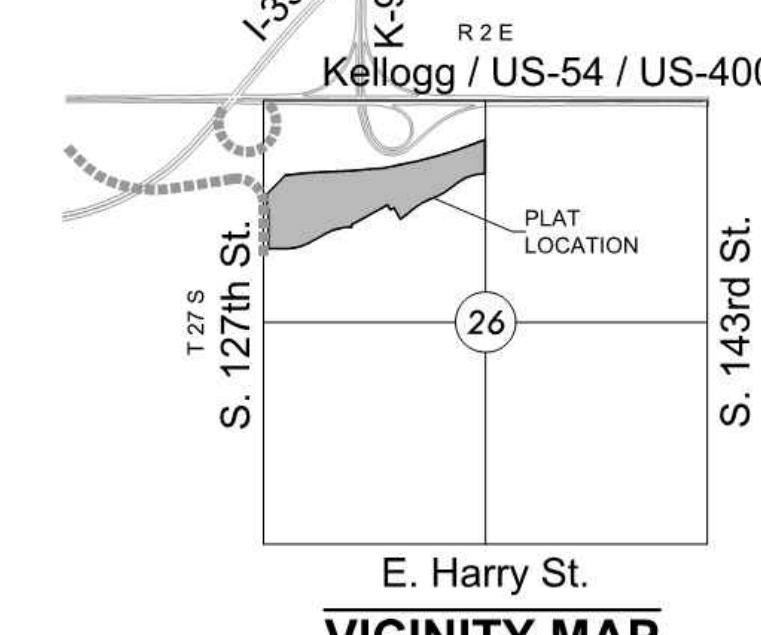


SUB2018-00024 Kellogg Crossing Addition

NW. cor., NW 1/4, Sec. 26, T27S, R2E, 6th P.M. Fnd. 3/8" Rebar w/ MKEC CLS 39 id cap

NE. cor., NW 1/4, Sec. 26, T27S, R2E, 6th P.M. Fnd. 3/8" Rebar w/ id cap in thimble

SE. cor., NW 1/4, Sec. 26, T27S, R2E, 6th P.M. Fnd. 1/2" Iron Pipe w/ no id cap



SCALE: 1" = 100'

Basis of Bearings: Kansas coordinate system of 1983 south zone bearing of N00°44'22"W on the west line of the Northwest Quarter, Section 26, Township 27 South, Range 2 East of the 6th Principal Meridian. This plat is surveyed and platted on NAD83 using Kansas state plane south zone coordinates, modified to the surface, having a combined adjustment scale factor of 1.000120014401728

LEGEND

- Date of Survey: July 2018
- ▲ = Section Corner Monument Found
 - = Set 3/8" rebar w/ MKEC CLS 39 id. cap
 - ⊕ = Benchmark
 - (D) = Described
 - (P) = Platted
 - (CD) = Calculated from Described
 - (CP) = Calculated from Plat
 - Dmg. = Drainage
 - Util. = Utility
 - Sdwk. = Sidewalk
 - St. = Street
 - Esmt. = Easement
 - 1 = Lot
 - ① = Block

BENCHMARKS

- BM#1 Chiseled square on top of curb east end of median island on Lincoln on west side of 127th Street East. Elev.=1350.05 NAVD88
- BM#2 Railroad spike in south face of power pole. 25' +/- east and 70' +/- south of West Quarter Corner of Sec. 26, T27S, R2E, (offsite). Elev.=1338.00 NAVD88

MINIMUM PAD ELEVATION (LOWEST OPENING)		
LOTS (inclusive)	BLOCK	ELEVATION NAVD88
5 - 6	1	1334.8
7 - 8	1	1343.9



SUB2018-00024 Kellogg Crossing Addition