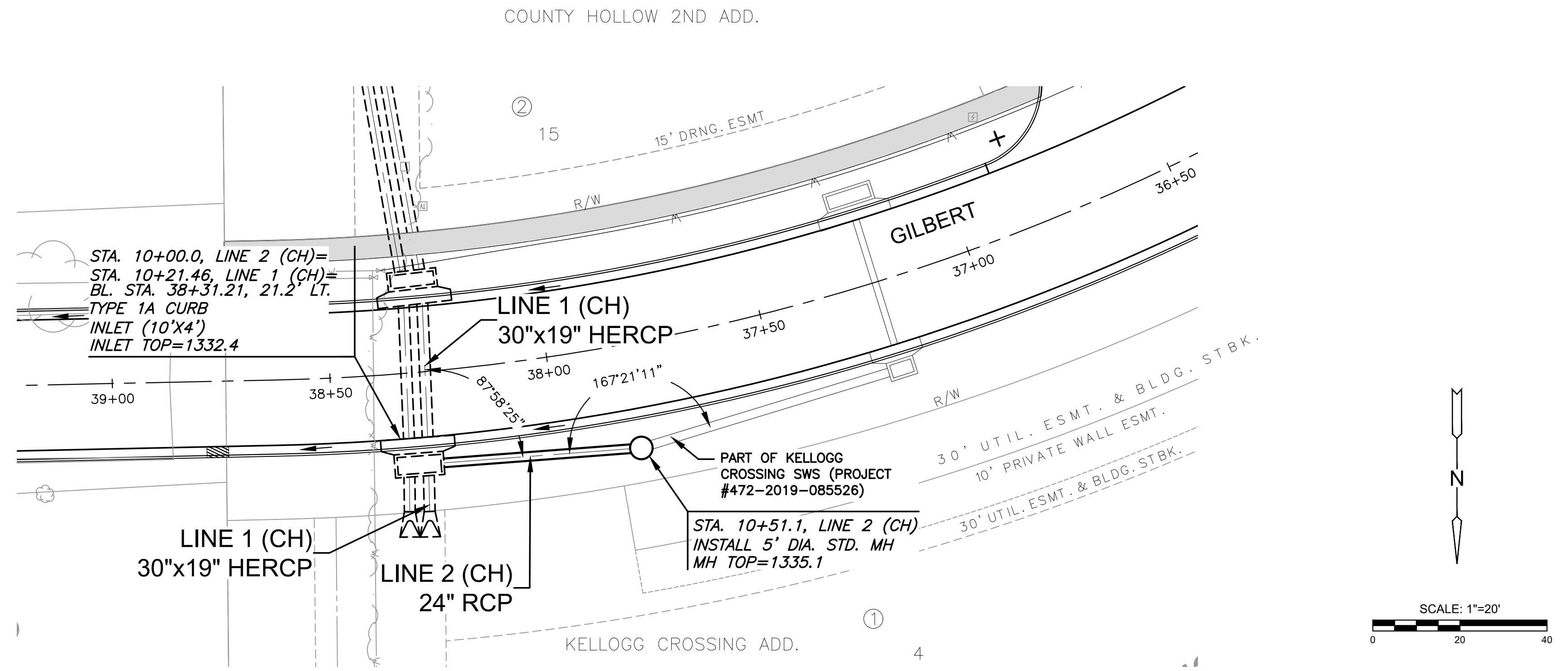


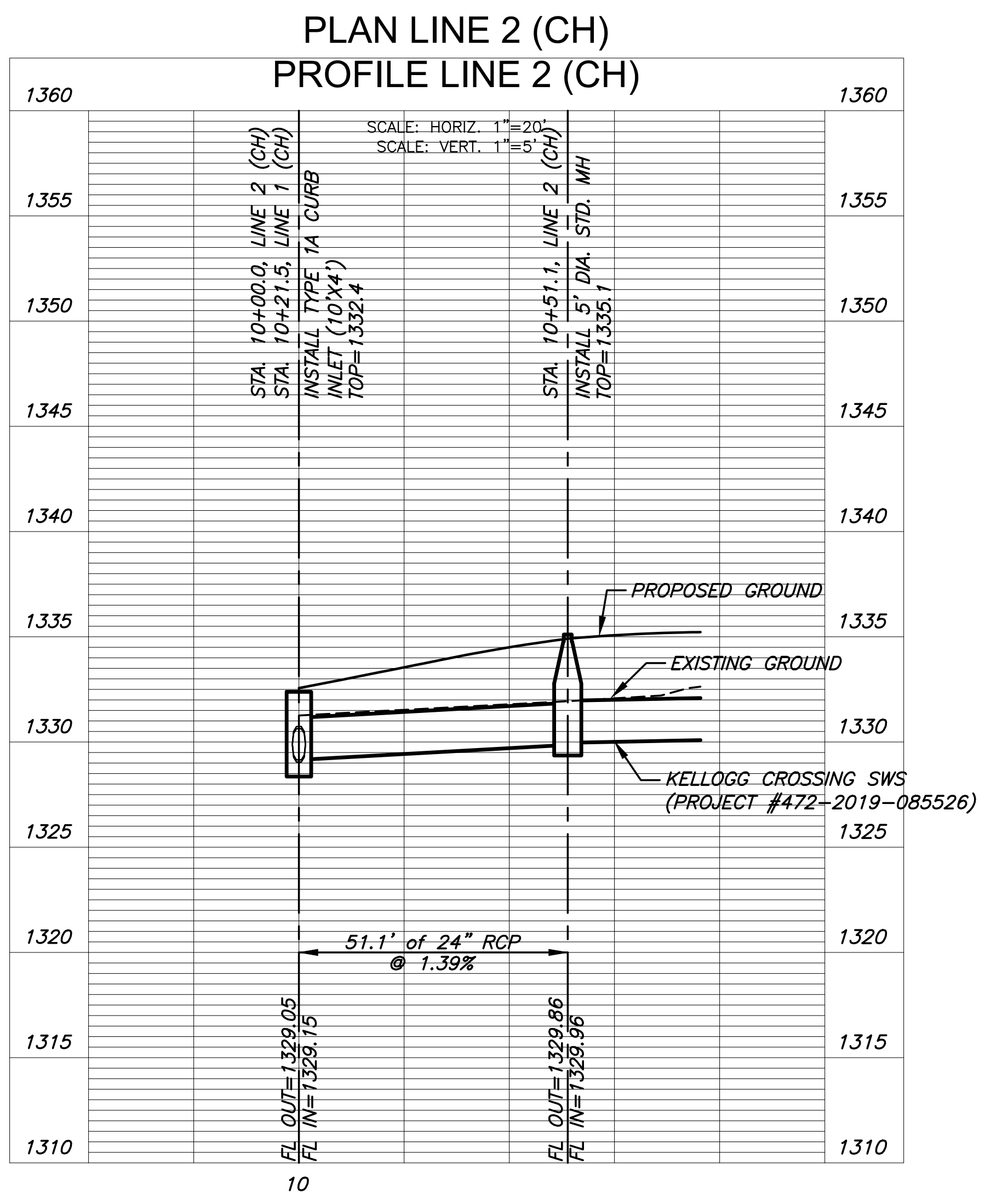
PLOTTED: Thursday, June 17, 2021 @ 02:41PM

J:\PROJECTS\2018\1801010519_COUNTRY HOLLOW 2ND_18519 CAD\SHOTS\05_CIVIL\SWSPHASE 2\18519-05-4201.DWG



NOTE:
CONTRACTOR TO VERIFY THE DEPTH AND LOCATION OF EXISTING UTILITIES PRIOR TO CONSTRUCTION.

COX AND AT&T UTILITIES WILL BE DISCONNECTED AND MOVED BY OTHERS.



©2021 MKEC Engineering
All Rights Reserved
www.mkec.com
These drawings and their contents, including, but not limited to, all concepts, designs, & ideas are the exclusive property of MKEC Engineering (MKEC), and may not be used or reproduced in any way without the express consent of MKEC.

LINE 2 CH	
PROJECT NO.	468-2021-85267
DATE	JUNE 2021
SCALE	1"=20'
DESIGNED	CRM
DRAWN	CRM
CHECKED	DFL
NO.	REVISION
NO.	DATE
SHEET NO.	
07 OF 16	