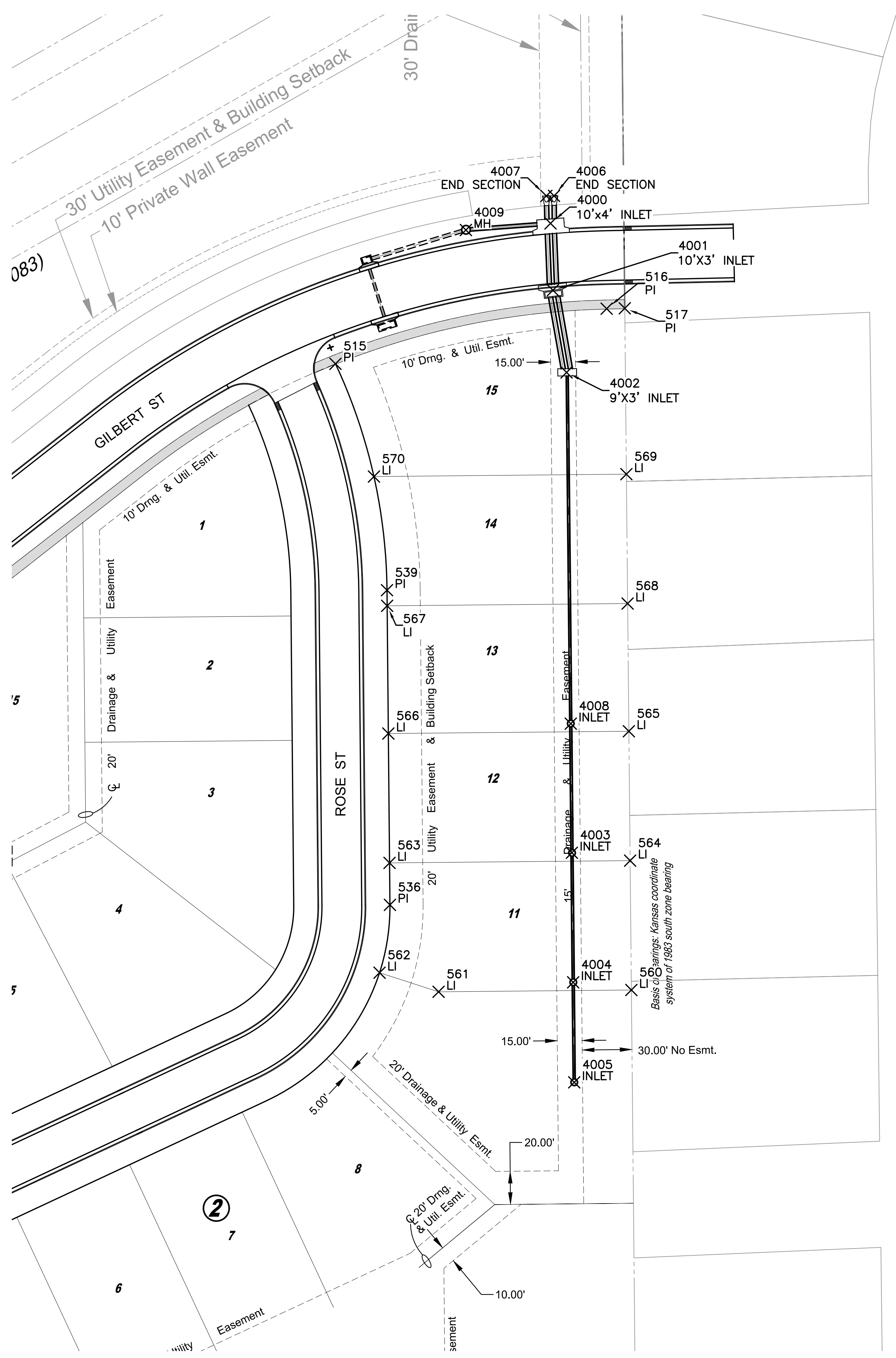


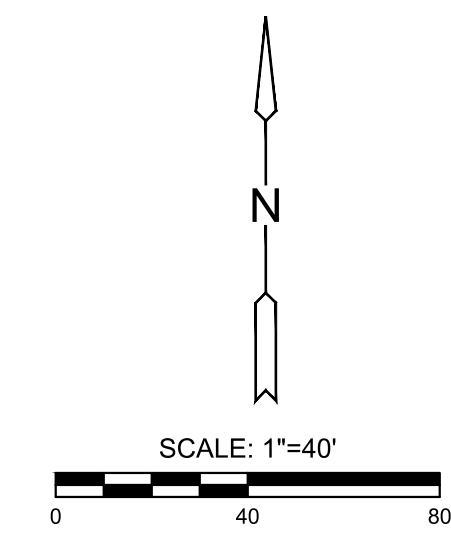
PLOTTED: Thursday, June 17, 2021 @ 02:39PM

J:\PROJECTS\2018\1801010519_COUNTRY HOLLOW 2ND_18519 CAD\SHOTS\05 CIVIL\SWSPHASE 2\18519-05-4500.DWG



PLAT POINTS			
Point #	Northing	Easting	Desc.
515	1682995.0839	1694254.5899	PI
516	1683028.3036	1694418.0957	PI
517	1683028.5351	1694428.9975	PI
536	1682668.8886	1694287.4123	PI
539	1682858.5931	1694285.6427	PI
560	1682617.5541	1694432.9891	LI
561	1682616.4699	1694316.7613	LI
562	1682627.9858	1694281.1573	LI
563	1682694.1973	1694287.1763	LI
564	1682695.5505	1694432.2316	LI
565	1682773.5468	1694431.4740	LI
566	1682772.1939	1694286.4487	LI
567	1682849.1905	1694285.7304	LI
568	1682850.5432	1694430.7262	LI
569	1682928.5395	1694429.9687	LI
570	1682927.1199	1694277.7951	LI

STORM WATER SEWER POINTS			
Point #	Northing	Easting	Desc.
4000	1683079.7307	1694384.2327	10'x4' INLET
4001	1683039.4448	1694385.6768	10'x3' INLET
4002	1682989.8782	1694393.9277	9'x3' INLET
4003	1682700.3055	1694397.1047	INLET
4004	1682622.1877	1694397.8771	INLET
4005	1682561.8854	1694398.5138	INLET
4006	1683096.3441	1694386.3641	END SECTION
4007	1683096.2990	1694381.7215	END SECTION
4008	1682778.1304	1694396.4637	INLET
4009	1683075.7461	1694333.2120	MH



STORM WATER SEWER AND GRADING FOR
COUNTY HOLLOW 2ND ADD.
 PHASE 2

©2021 MKEC Engineering All Rights Reserved www.mkec.com
 These drawings and their contents, including, but not limited to, all concepts, designs, & ideas are the exclusive property of MKEC Engineering (MKEC), and may not be used or reproduced in any way without the express consent of MKEC.

BUBBLE MAP

PROJECT NO.	468-2021-85267
DATE	JUNE 2021
SCALE	1"=40'
DESIGNED	CRM
DRAWN	CRM
CHECKED	DFL

NO.	REVISION	DATE