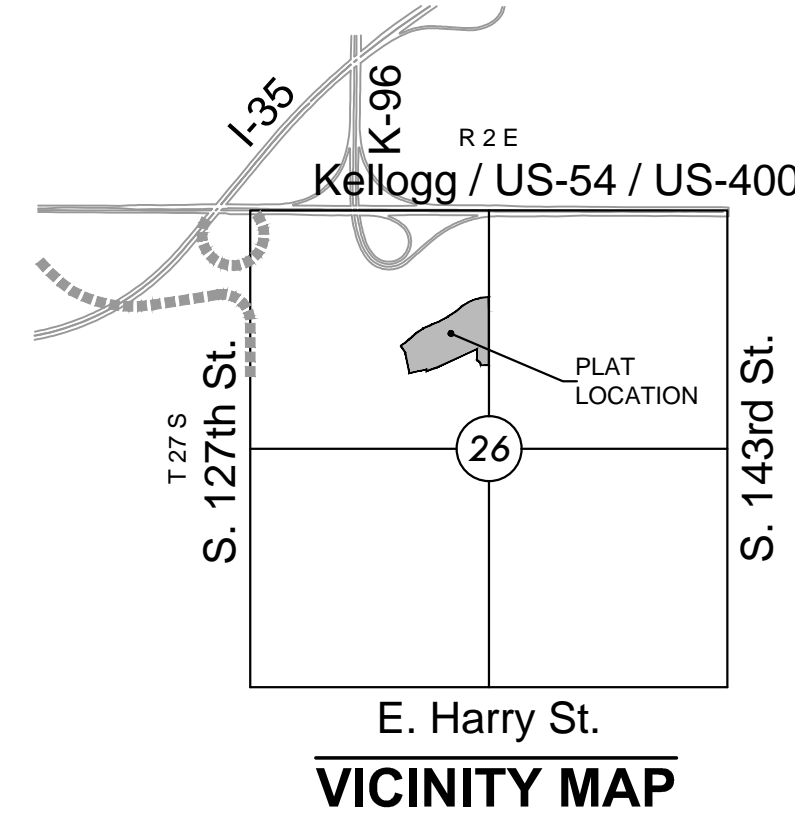


# FINAL PLAT

## COUNTRY HOLLOW SECOND ADDITION

AN ADDITION TO WICHITA, SEDGWICK COUNTY, KANSAS  
a replat of a portion of Country Hollow Addition, an addition to Wichita, Sedgwick County, Kansas



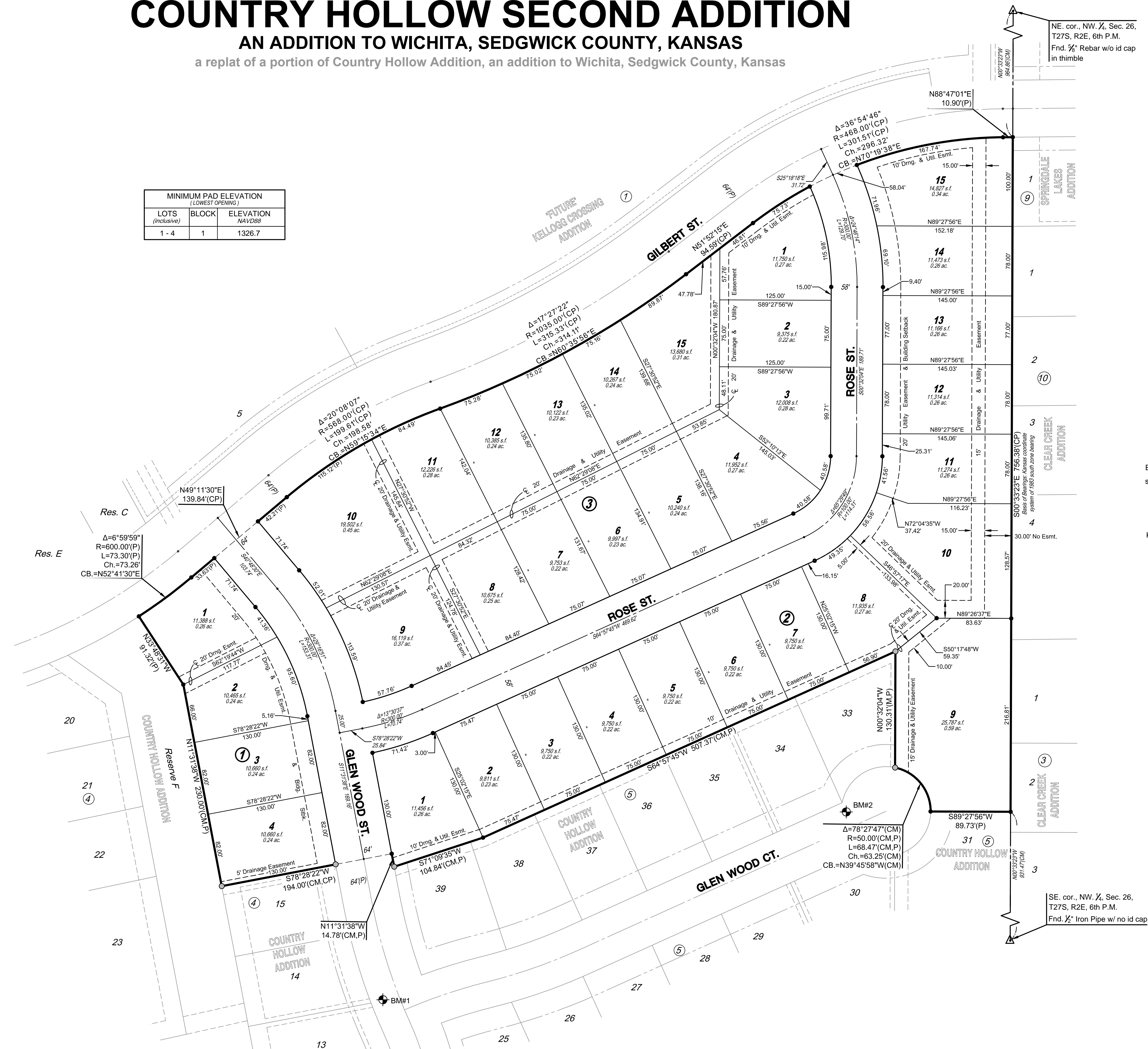
MINIMUM PAD ELEVATION (LOWEST OPENING)		
LOTS (inclusive)	BLOCK	ELEVATION NAVD88
1 - 4	1	1326.7

### LEGEND

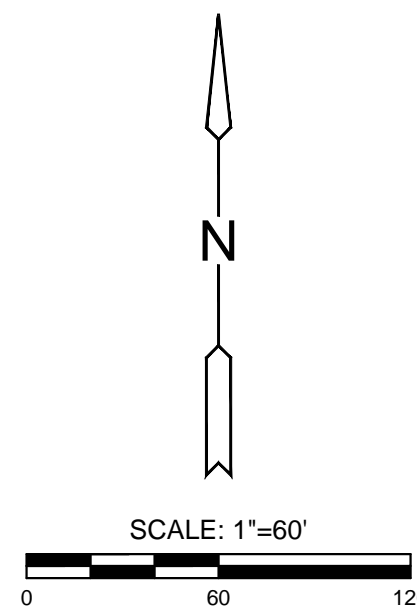
- Date of Survey: July 2018
- △ = Section Corner Monument Found
  - = Found 3/4" rebar w/ MKEC CLS 39 id. cap
  - = Set 3/4" rebar w/ MKEC CLS 39 id. cap
  - ⊕ = Benchmark
  - (P) = Platted
  - (CM) = Calculated from Measurement
  - Dng. = Drainage
  - Util. = Utility
  - Esmt. = Easement
  - ① = Lot
  - ④ = Block

### BENCHMARKS

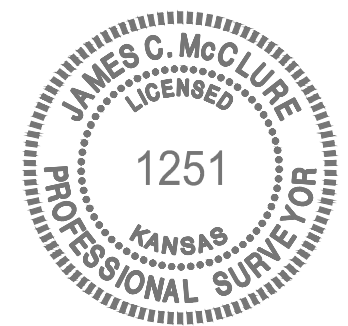
- BM#1 Chiseled square on top of curb between Lots 13 and 14, Block 4, Country Hollow Addition. Elev.=1333.3 NAVD88
- BM#2 Chiseled square on top of curb between Lots 33 and 34, Block 5, Country Hollow Addition. Elev.=1341.01 NAVD88



NE. cor., NW 1/4, Sec. 26, T27S, R2E, 6th P.M.  
Fnd. 3/4" Rebar w/o id cap in thimble



Basis of Bearings: Kansas coordinate system of 1983 south zone bearing of S00°33'23"E on the east line of the Northwest Quarter, Section 26, Township 27 South, Range 2 East of the 6th Principal Meridian.  
This plat is surveyed and platted on NAD83 using Kansas state plane south zone coordinates, modified to the surface, having a combined adjustment scale factor of 1.000120014401728



SE. cor., NW 1/4, Sec. 26, T27S, R2E, 6th P.M.  
Fnd. 1/2" Iron Pipe w/ no id cap