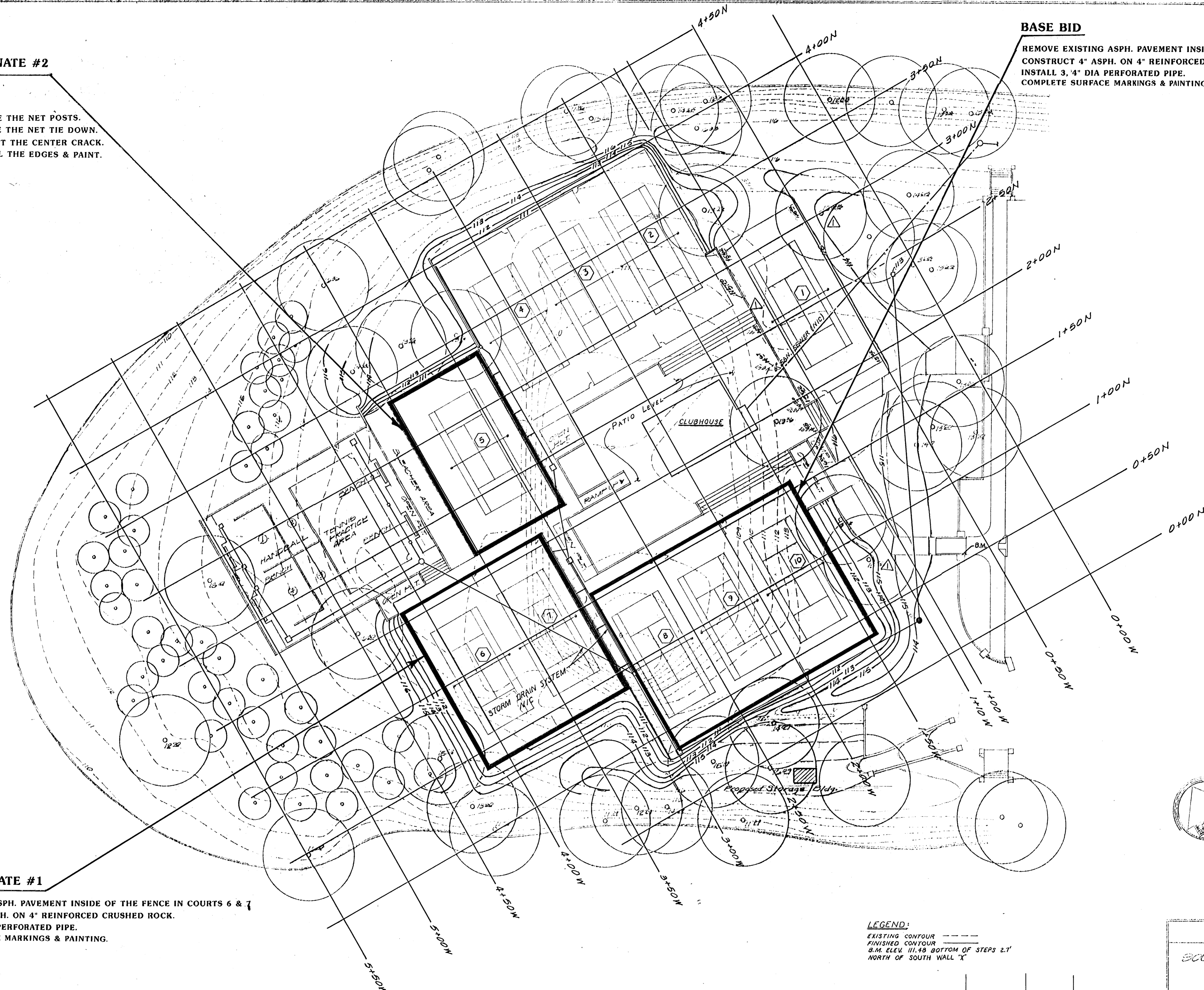


ADD ALTERNATE #2

REMOVE & REPLACE THE NET POSTS.
 REMOVE & REPLACE THE NET TIE DOWN.
 MILL, PATCH & PAINT THE CENTER CRACK.
 CLEAN, CRACK SEAL THE EDGES & PAINT.

BASE BID

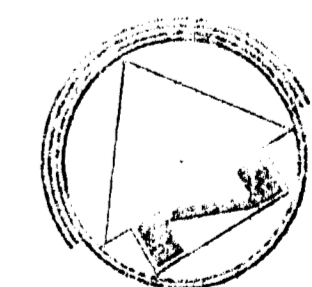
REMOVE EXISTING ASPH. PAVEMENT INSIDE OF THE FENCE IN COURTS 8, 9 & 10.
 CONSTRUCT 4" ASPH. ON 4" REINFORCED CRUSHED ROCK.
 INSTALL 3/4" DIA PERFORATED PIPE.
 COMPLETE SURFACE MARKINGS & PAINTING.



ALTERNATE #1

REMOVE EXISTING ASPH. PAVEMENT INSIDE OF THE FENCE IN COURTS 6 & 7.
 CONSTRUCT 4" ASPH. ON 4" REINFORCED CRUSHED ROCK.
 INSTALL 3/4" DIA PERFORATED PIPE.
 COMPLETE SURFACE MARKINGS & PAINTING.

LEGEND:
 EXISTING CONTOUR ---
 FINISHED CONTOUR - - -
 B.M. ELEV. 111.48 BOTTOM OF STEPS 2.1'
 NORTH OF SOUTH WALL 'X'



REVISION	DATE	DESCRIPTION
1	12-30-75	Elev. East Ret. Wall of Court #1 & Courts

GENERAL PLAN

SOUTH RIVERSIDE PARK

PROJ. NO. 472-82869

BOARD OF PARK COMMISSIONERS
WICHITA, KANSAS

SHEET
2 OF 6

5-29-75 TRF & TWS 1"=30'-0"