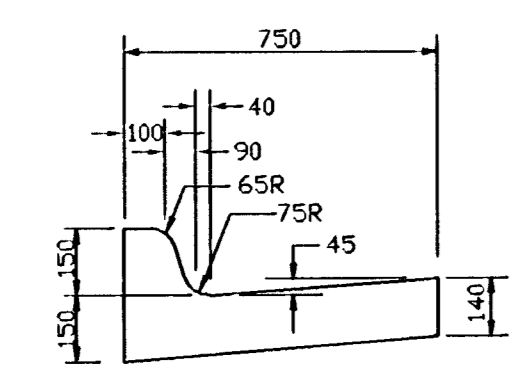
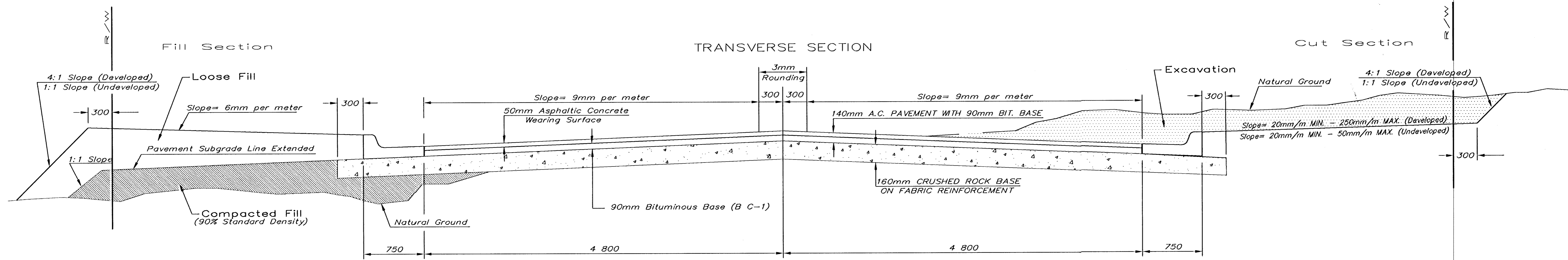


# TYPICAL 11 100 B-B PAVEMENT DETAILS

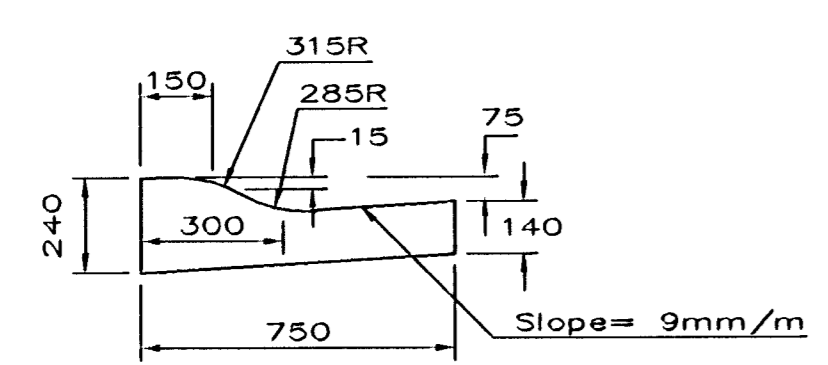
## PARKRIDGE STA. 0+018.4 TO STA. 0+054.5

FHWA REGION NO.	STATE	PROJECT NUMBER	FISCAL YEAR	SHEET NUMBER	TOTAL SHEETS
7	KANSAS	87N-0127-01	1999	6	90

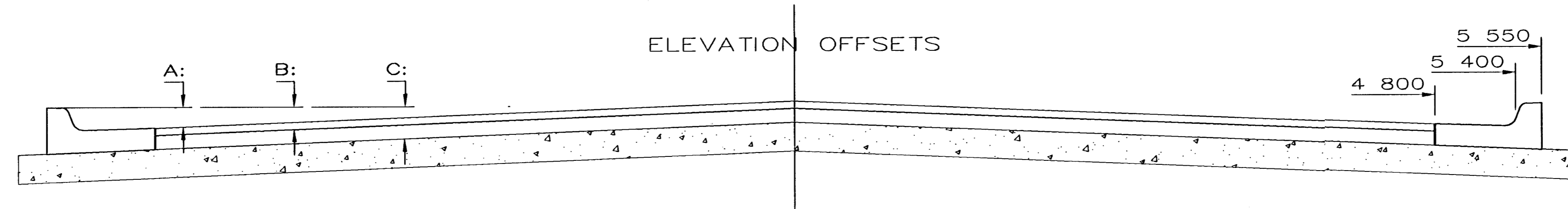
DATE	
BY	
REFERENCES NOTED	
REFERENCES CHECKED	



COMBINED CURB & GUTTER



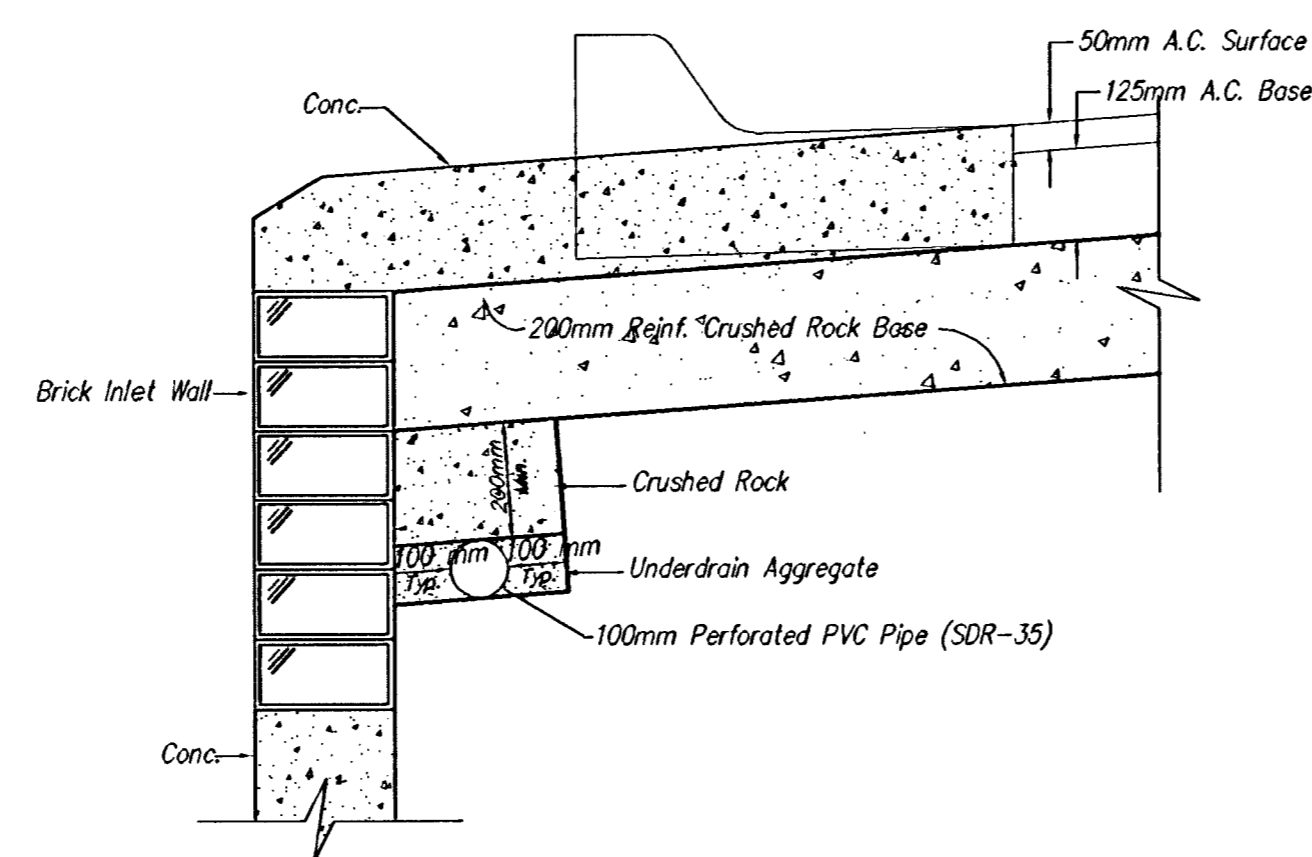
COMBINED ROLL TYPE CURB & GUTTER



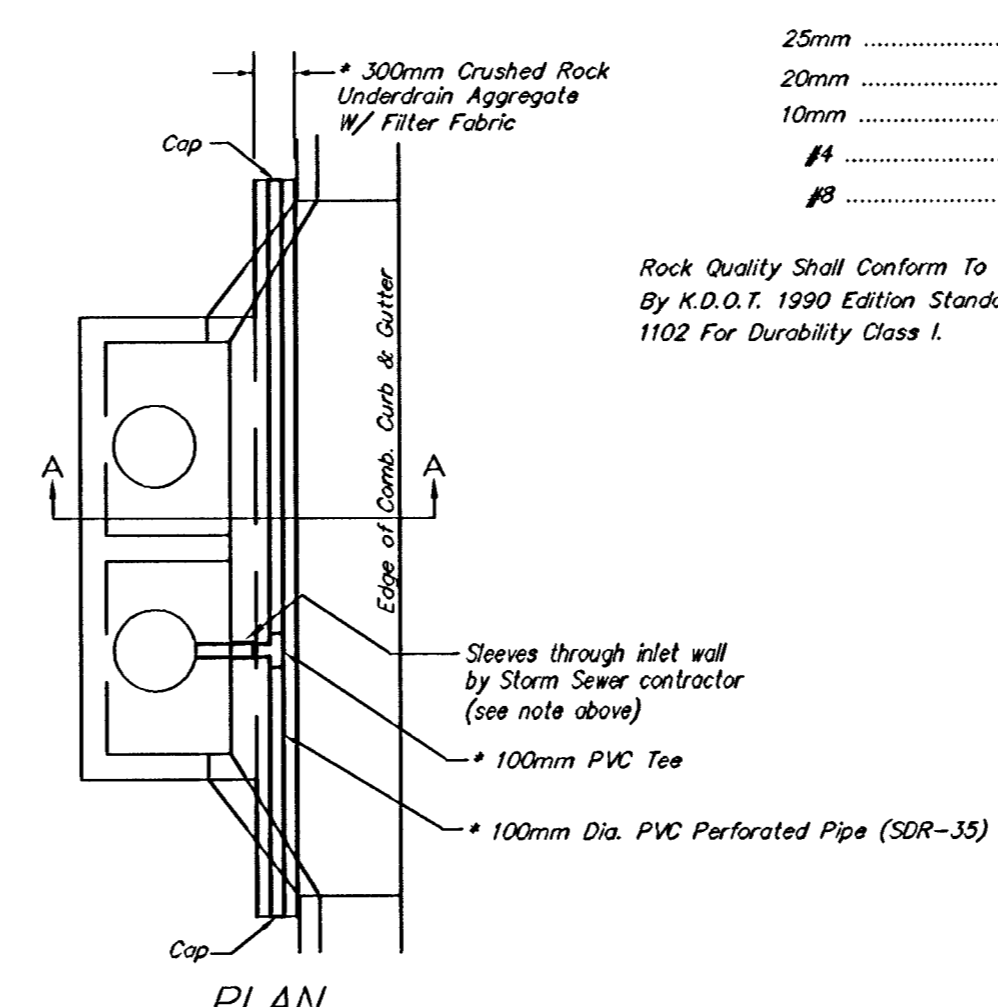
	DISTANCE FROM CENTERLINE (L.T. & RT.)												
	0	600	1 200	1 800	2 400	3 000	3 600	4 200	4 800	5 400	5 550	5 850	
A: Top of Curbs to Top of Surface Lift	3	15	34	55	73	91	110	131	149	-	-	-	
B: Top of Curbs to Top of Upper Base Lift	52	67	85	104	122	143	162	180	198	-	-	-	
C: Top of Curbs to Top of C.R. Subgrade	143	155	174	195	213	232	250	271	290	308	311	323	

TRANSVERSE CONSTRUCTION JOINTS

Transverse construction joints shall be constructed in flexible base pavements at locations where pavement joints existing flexible base pavement as shown by the detail. All costs associated with the construction of the transverse joint shall be included in the bid price for Square Meters 140mm ASPHALTIC CONCRETE (90mm BITUMINOUS BASE).



TRENCH DRAIN DETAIL FOR ARTERIAL STREETS  
NOT TO SCALE

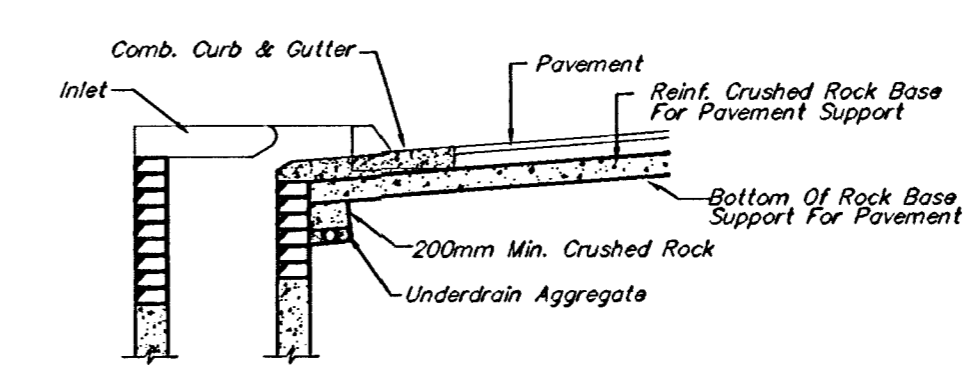


PAVEMENT UNDERDRAIN DETAIL  
NOT TO SCALE

\* UNDERDRAIN AGGREGATE  
Percent of Aggregate Retained

25mm	0
20mm	0 to 10
10mm	45 to 80
#4	90 to 100
#8	95 to 100

NOTES: The 100mm PVC Perforated Pipe shall be installed by the paving contractor at all sump locations.  
The Storm Sewer contractor shall install sleeves through inlet wall.  
Cost of Underdrain System to be incidental to the Reinforced Crushed Rock Subgrade.  
Inlet Type May Vary From That Shown.



(Min. 52 Perforations Per L. M. @ 7mm Dia.)  
Perforations To Be on Bottom Half

SECTION A-A

### General Notes

FABRIC BASE REINFORCEMENT SHALL BE B X 1100 GEOGRID AS MANUFACTURED BY TENSAR CORPORATION OR APPROVED EQUAL. FABRIC BASE REINFORCEMENT SHALL BE INSTALLED IN ACCORDANCE WITH MANUFACTURER'S RECOMMENDATIONS. CRUSHED ROCK SHALL BE UNIFORMLY GRADED FROM 38mm MAXIMUM SIZE TO NOT MORE THAN 10% PASSING A NO. 200 SIEVE. ROCK QUALITY SHALL BE THE SAME AS SPECIFIED FOR COARSE AGGREGATE FOR CONCRETE MIXES.

ROCK BASE IS TO BE COMPACTED AND SMOOTHED WITH A STEEL FACED ROLLER PRIOR TO PLACEMENT OF ASPHALT. TACK COAT WILL NOT BE APPLIED TO ROCK BASE.

A TACK COAT OF EMULSIFIED ASPHALT (SC-1H OR CSS-1H) SHALL BE APPLIED AT AN APPROXIMATE RATE OF 0.23 LITERS PER SQUARE METER BETWEEN EACH LIFT OF ASPHALTIC MATERIAL.

BITUMINOUS BASE AND ASPHALTIC CONCRETE WEARING SURFACE SHALL BE PLACED WITH A LAYDOWN MACHINE HAVING AUTOMATIC CONTROLS FOR LINE AND GRADE.

CONSTRUCTION JOINTS IN EACH LIFT SHALL BE STAGGERED A MINIMUM DISTANCE OF THREE HUNDRED (300) MILLIMETERS FROM JOINTS IN PRECEDING LIFTS AND PLACED SO THAT A JOINT WILL BE CONSTRUCTED ON THE CENTERLINE OF THE TOP LIFT.

THE ASPHALTIC CONCRETE PAVEMENT BETWEEN THE COMBINED CURB AND GUTTER SHALL BE PAID AS SQUARE METERS OF 140mm ASPHALTIC CONCRETE (90mm BITUMINOUS BASE.)

**11 100 PAVEMENT 140mm ASPHALTIC CONC. W/ CRUSHED ROCK BASE**

<b>SRB</b>	924 NORTH MAIN WICHITA, KANSAS 67203 http://www.felst.com/~srb	316-264-8008 FAX 264-4921 E-Mail: sr@felst.com	REVISED
<b>SAVOY, RUGGLES &amp; BOHM, P.A.</b> ENGINEERING & SURVEYING			6
PROJECT NUMBER <b>472-76-245-83053-000-000-001</b>			90
DRAWN Staff	DESIGN Staff	REVIEW DATE 4-3-00	SHEET NO. 1218T