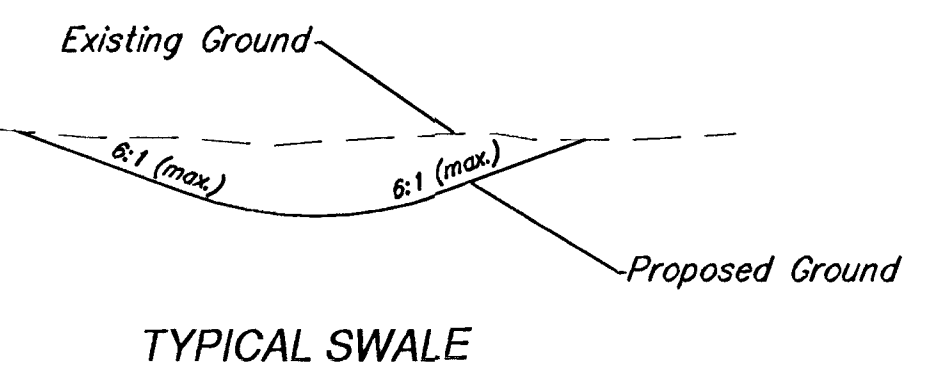
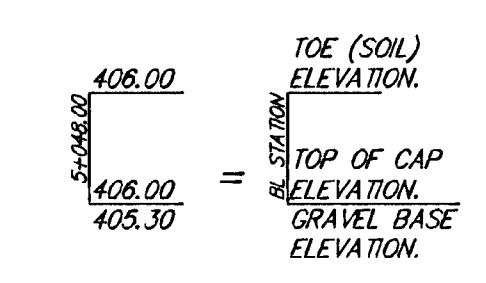


FHWA REGION NO.	STATE	PROJECT NUMBER	FISCAL YEAR	SHEET NUMBER	TOTAL SHEETS
7	KANSAS	87N-0127-01	1999	8	90

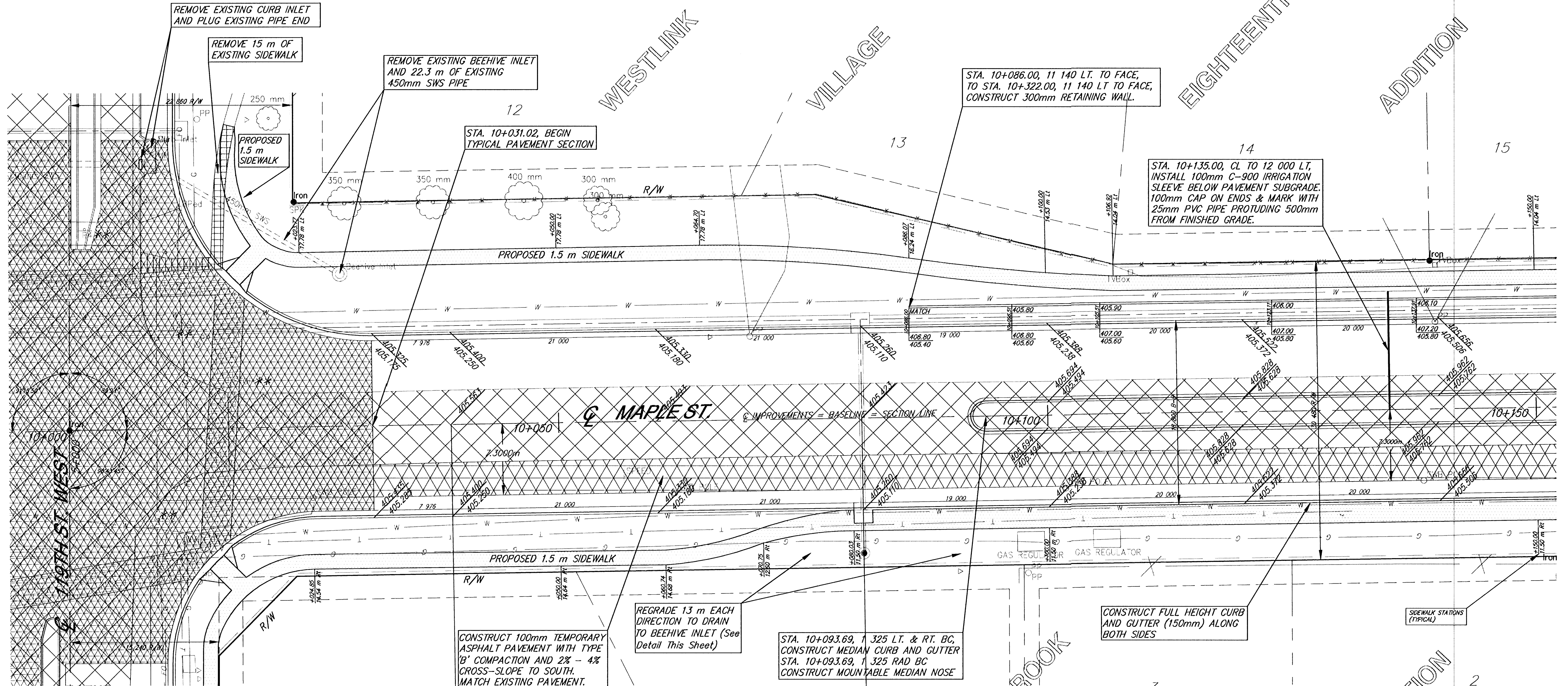
NOTE: SEE INTERSECTION DETAIL SHEET FOR WHEELCHAIR RAMP LAYOUT AND SIZE SHEET 21 OF 90

** NOTE: SEE INTERSECTION SIGNAGE SHEET FOR RELOCATION OF EXISTING SIGNS SHEET 54 OF 90

RETAINING WALL ELEVATIONS

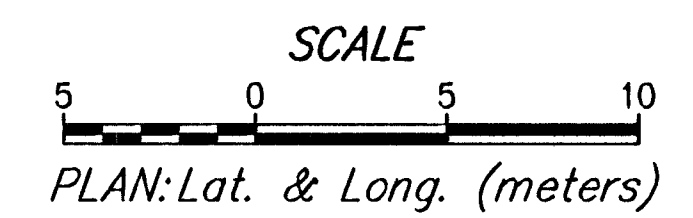


DATE	BY	REFERENCES NOTED	REFERENCES CHECKED



LEGEND

- Pavement Removal
- Sidewalk Construction (AE)(100 mm)
- Concrete Pavement (150 mm)(AE)(Plain)
- Concrete Pavement (200 mm)(AE)(Plain)
- Concrete Pavement (200 mm)(AE)(Plain)
- Crushed Stone Subgrade (175 mm) - Geogrid Reinforcement (for base)
- Concrete Pavement (200 mm)(AE)(Plain)
- Crushed Stone Subgrade (175 mm) - Geogrid Reinforcement (for base)
- Paving Brick (80 mm)
- Concrete Base (200 mm)
- Temporary Asphalt Paving (100 mm)
- Type 'B' Compacted Subgrade (varies)



MAPLE AVE. IMPROVEMENTS - 119TH ST. W. TO MAIZE RD.
PAVING PLANS STA 10+00 TO 10+150

SRB 924 NORTH MAIN WICHITA, KANSAS 67203 316-264-8009
http://www.srb.com/~srb E-Mail: srbs@srb.com FAX 316-264-4821

SAVOY, RUGGLES & BOHM, P.A.
ENGINEERING & SURVEYING

PROJECT NUMBER: 472-76-245-83053-000-000-001

DRAWN	DESIGN	REVIEW	DATE	UTILITY	SRB JOB
Staff	Staff	Staff	8-13-00		1216T