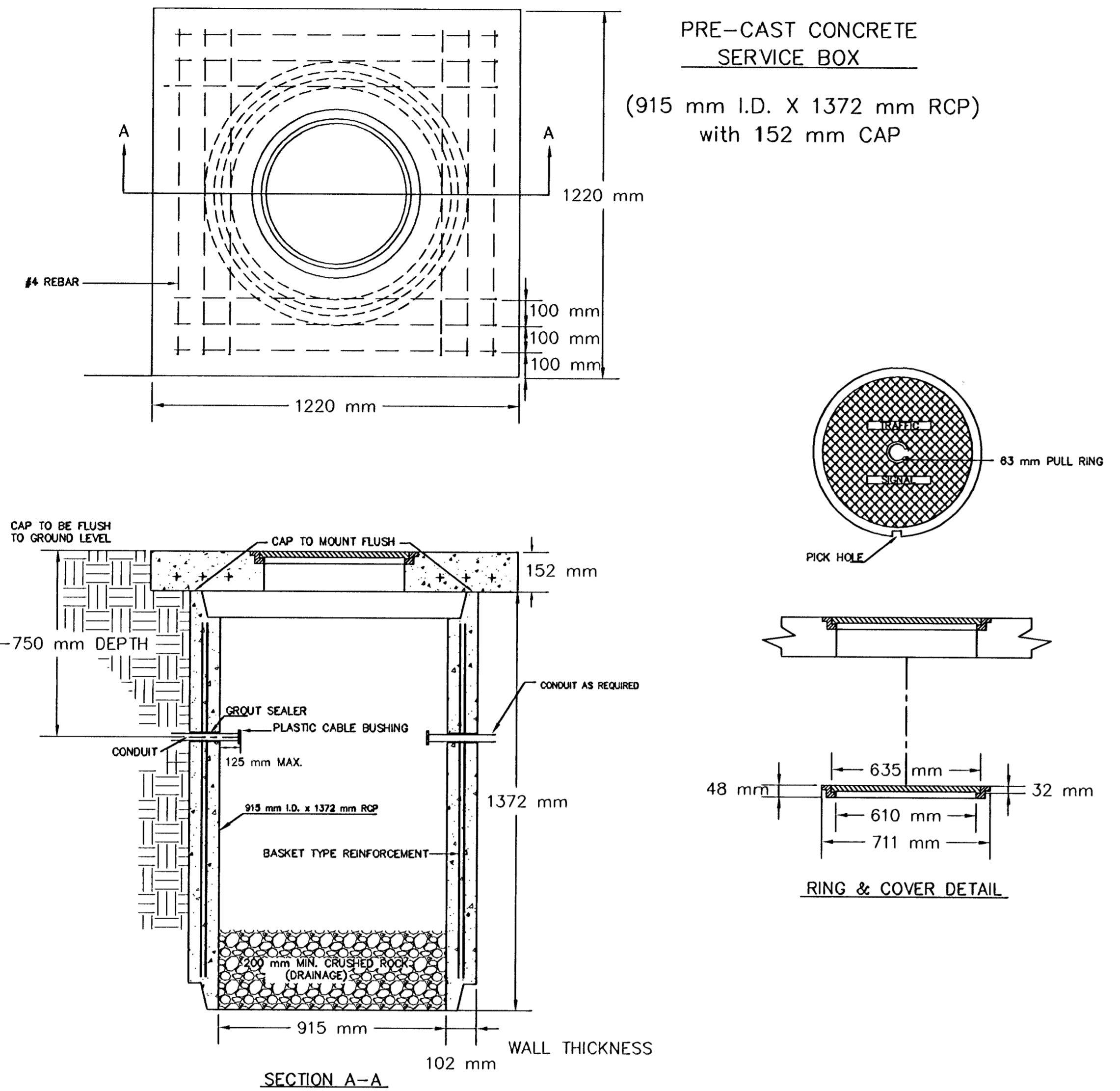
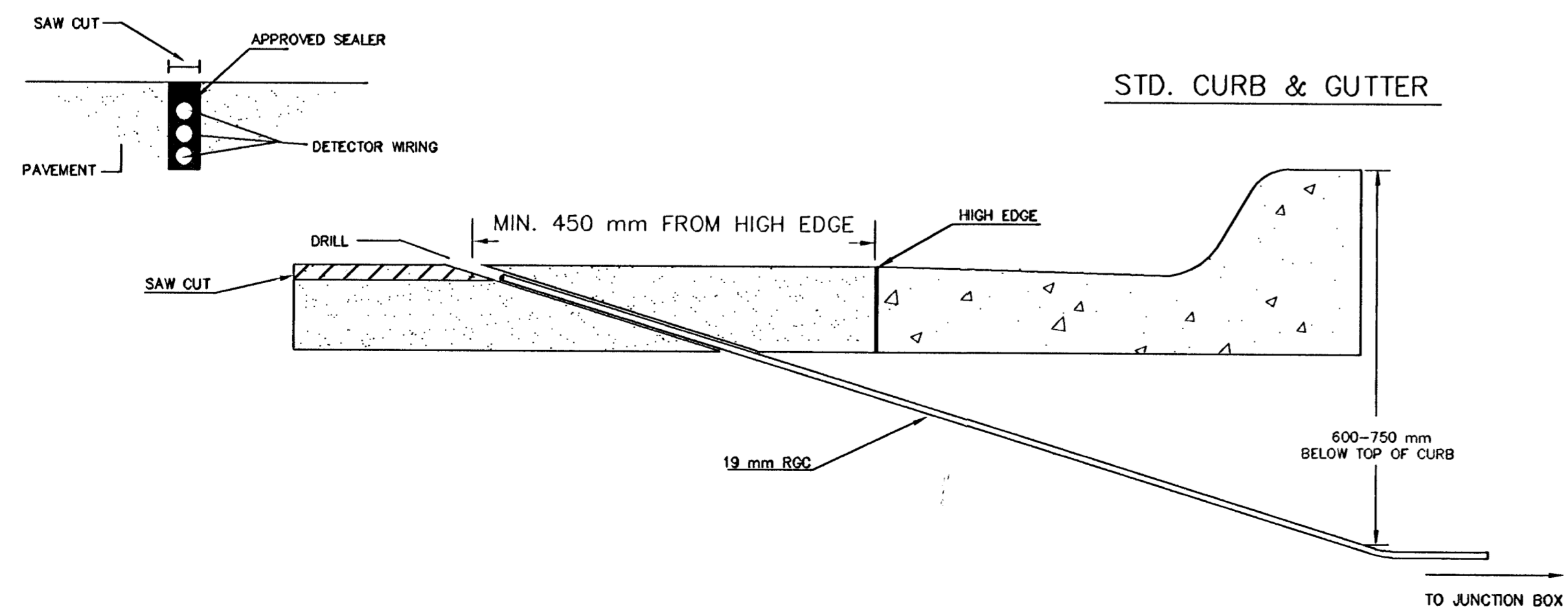


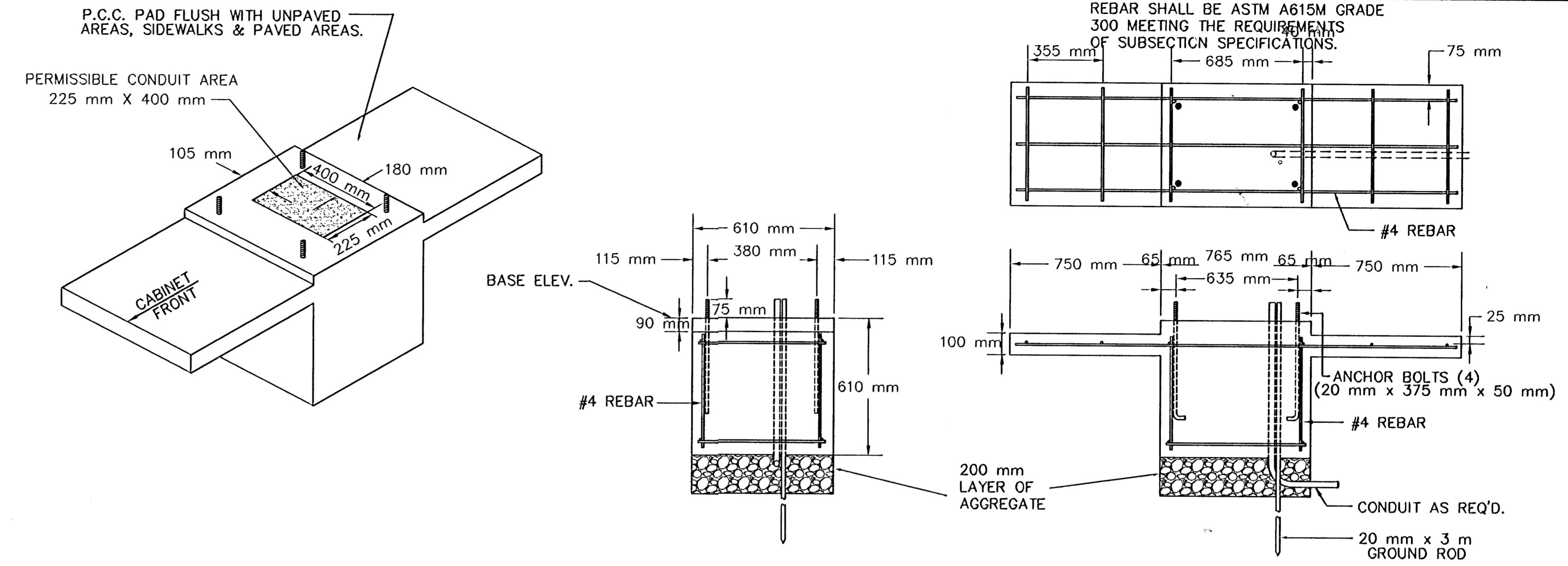
# SERVICE BOX CONSTRUCTION/INSTALLATION DETAILS



# CONDUIT/DETECTOR WIRE INSTALLATION DETAILS

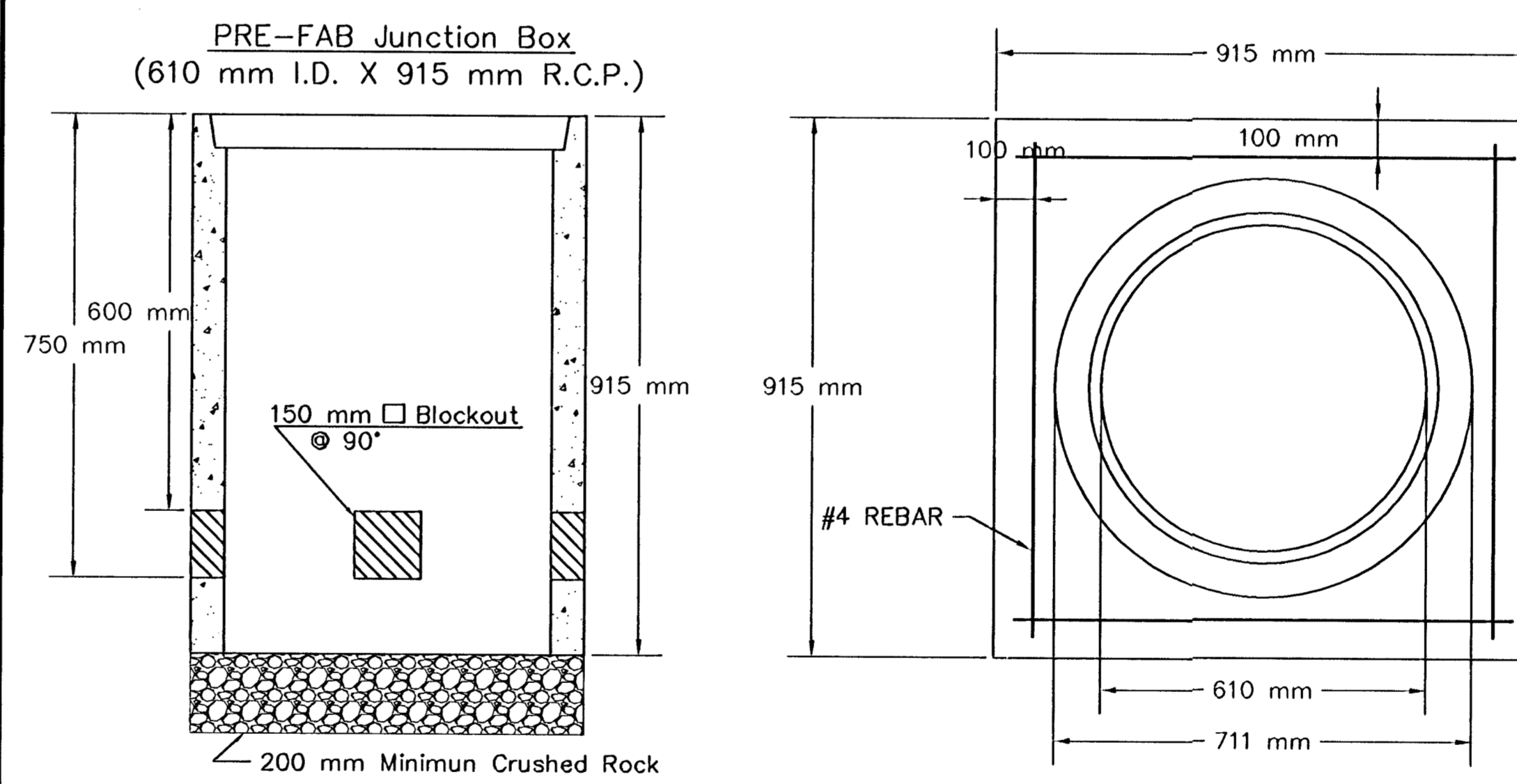


# 170 CONTROLLER PAD DETAILS



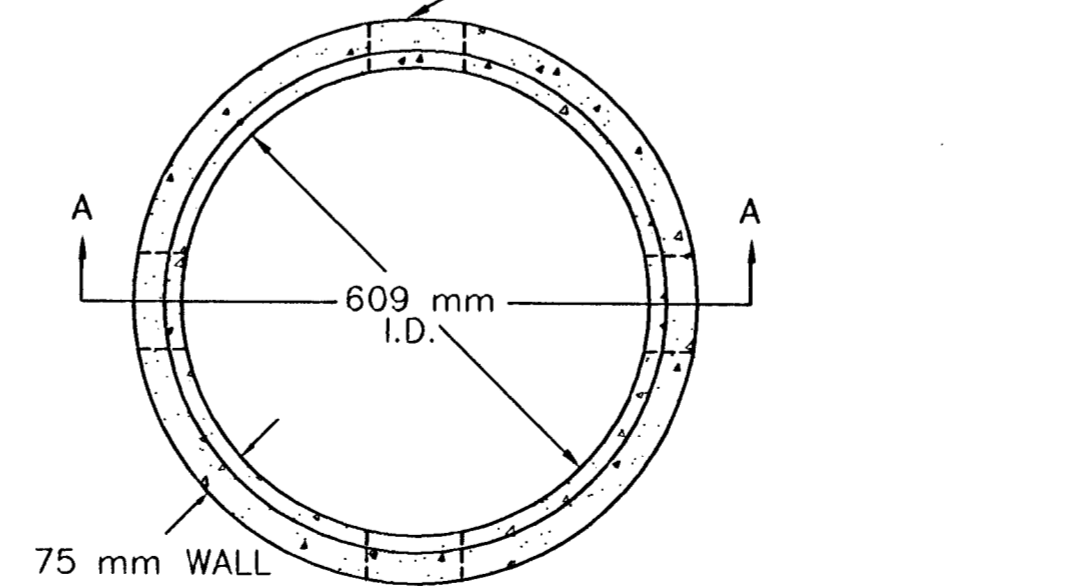
FHWA REGION NO.	STATE	PROJECT NUMBER	FISCAL YEAR	SHEET NUMBER	TOTAL SHEETS
7	KANSAS	87N-0127-01	1999	52	90

# JUNCTION BOX DETAILS



### JUNCTION BOX CAP

915 mm x 915 mm x 152 mm  
TOP OF CAP TO BE FLUSH WITH GROUND LEVEL.



## NOTES:

- SERVICE & JUNCTION BOX:**
- CONDUIT CONNECTION TO BE FLUSH TO WITHIN 125 mm OF INSIDE FACE OF SIDE WALL, CONDUIT TO DRAIN INTO SERVICE BOX.
  - CONDUIT CONNECTIONS TO SERVICE BOX SHALL BE TERMINATED WITH PLASTIC CABLE BUSHING.
  - CONDUIT SHALL BE SEALED WITH APPROVED SEALER AT INSIDE WALL FACE.
  - ALL SERVICE & JUNCTION BOXES TO HAVE 200 mm OF CRUSHED ROCK.
- TRENCHING:**
- DEPTH TO BE 750 mm MINIMUM WITH ROCK & STUBBLE FREE BACKFILL TO SERVE AS BEDDING MATERIAL. MAINTAIN MINIMUM CONDUIT DEPTH IN TRENCH.
  - BACKFILL TO BE COMPACTED IN 150 mm LOOSE LIFTS BY HAND OR MECHANICAL TAMPING TO A 95% STANDARD DENSITY.
- CONDUIT:**
- SLOPE CONDUIT TO DRAIN AS DIRECTED BY THE ENGINEER.
  - 75 mm RIGID STEEL CONDUIT BTWN. SERVICE BOXES.  
32 mm " " BTWN. SERVICE & JUNCTION BOXES.  
19 mm " " BTWN. JUNCTION BOXES.  
19 mm " " BTWN. JUNCTION BOX & DETECTOR LOOP SAW CUT

\*\*SEE SERVICE BOX INSTALLATION FOR RING & COVER DETAILS.

REV. DATE	COMMENTS	INT

<b>PROJECT DESCRIPTION</b>			
SERVICE/JUNCTION BOX, CONTROLLER PAD CONSTRUCTION/INSTALLATION DETAILS			
<b>PROJECT NUMBER</b> 472-78-245-83053-000-000-001			
<b>DRAWN BY:</b> T.M.	<b>APPROVED BY:</b>		<b>REVISION:</b>
<b>DATE:</b> Feb. 98			<b>DATE:</b>
<b>CITY OF WICHITA</b>			
<b>DEPARTMENT OF PUBLIC WORKS</b>			
TRAFFIC ENGINEERING DIVISION WM. G. MCKINLEY TRAFFIC ENGINEER			<b>SCALE</b> NO SCALE