

PHASE 2 GRASS & LANDSCAPE PLANTING
PAVING PLANS FOR

SOUTH SENECA

FROM S.L. 55TH. ST. SOUTH TO S.L. 48TH. ST. SOUTH

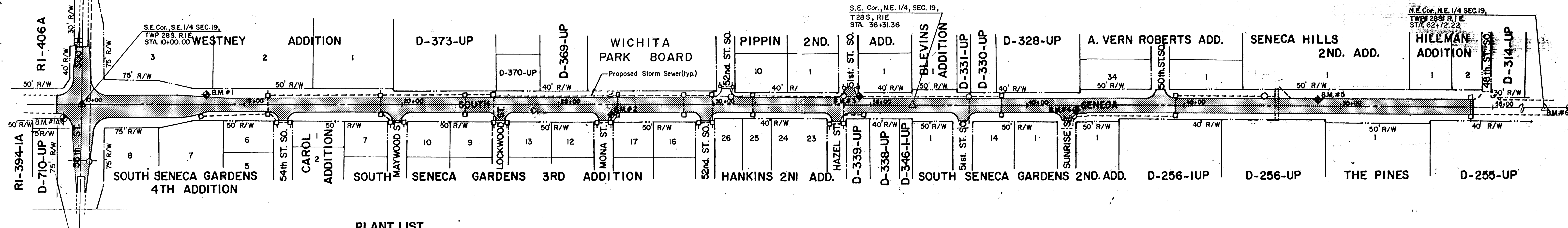
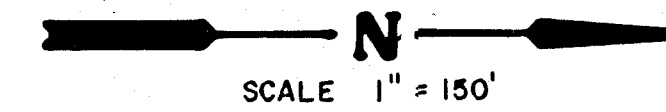
PROJECT NO.

472-76-245-82008-000-000-001

CITY OF WICHITA, KANSAS
MICHAEL E. LINDEBAK, CITY ENGINEER
INDEX NO. 705509

INDEX TO DRAWINGS

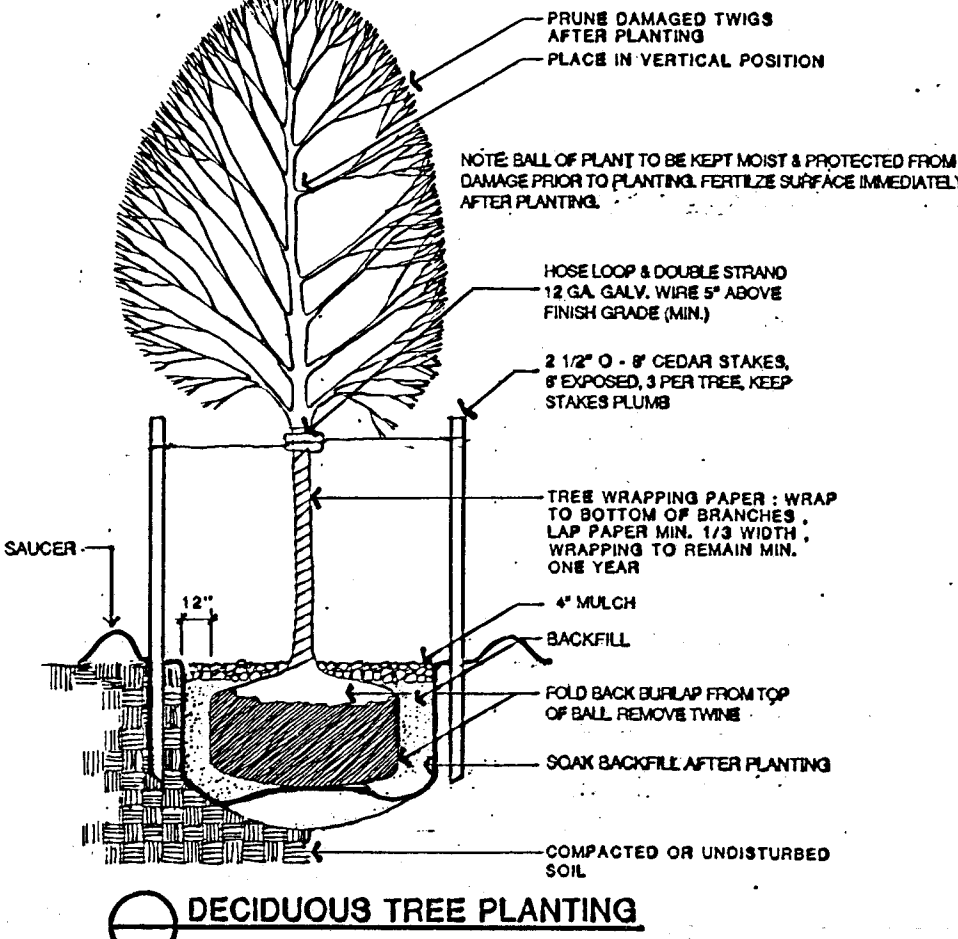
SHEET NO.	DESCRIPTION
1	TITLE SHEET
2-9	LANDSCAPE PLAN



PLANT LIST

QUANT.	COMMON NAME / BOTANICAL NAME	SIZE	COND.	REMARKS
20	MARSHALL SEEDLESS ASH <i>Fraxinus pennsylvanica</i> 'Marshall Seedless'	2 - 2 1/2"	BB	
22	SHADEMASTER HONEYLOCUST <i>Gleditsia triacanthos</i> 'Shademaster'	2 - 2 1/2"	BB	
33	AUTUMN PURPLE ASH <i>Fraxinus americana</i> 'Autumn purple'	2 - 2 1/2"	BB	
8	LACEBARK ELM <i>Ulmus parvifolia</i> 'Lacebark'	2 - 2 1/2"	BB	
16	CHINESE PISTACHE <i>Pistachia chinensis</i>	2 - 2 1/2"	BB	
17	CHANTICLEER PEAR <i>Pyrus calleryana</i> 'Chanticleer'	6 - 8'	BB	
10	INDIAN SUMMER CRABAPPLE <i>Malus</i> 'Indian Summer'	6 - 8'	BB	
6	GOLDENRAINTREE <i>Koeleruteria paniculata</i>	6 - 8'	BB	
6	VAN ESELTIME CRABAPPLE <i>Malus</i> 'Van Eseltine'	6 - 8'	BB	
10	SPRING SNOW CRABAPPLE <i>Malus</i> 'Spring Snow'	6 - 8'	BB	
19	EASTERN REDBUD <i>Cercis canadensis</i>	6 - 8'	BB	
23	PRAIRIE FIRE CRABAPPLE <i>Malus</i> 'Prairie Fire'	6 - 8'	BB	

NOTE: PLANTING DEPTH OF ROOTBALL SHALL BE EQUAL TO ITS ORIGINAL PLANTING DEPTH AT NURSERY.



DECIDUOUS TREE PLANTING



	SOUTH SENECA IMPROVEMENTS	Design Drawn by Checked by
	TITLE SHEET 55TH. ST. SO. TO 48TH. ST. SO.	Date MARCH, 1992 Job no.

MID-KANSAS ENGINEERING CONSULTANTS PA 3500 NORTH ROCK ROAD BUILDING #800 WICHITA, KANSAS 67226	Sheet 1 of 9
---	-------------------------------------

636-5566