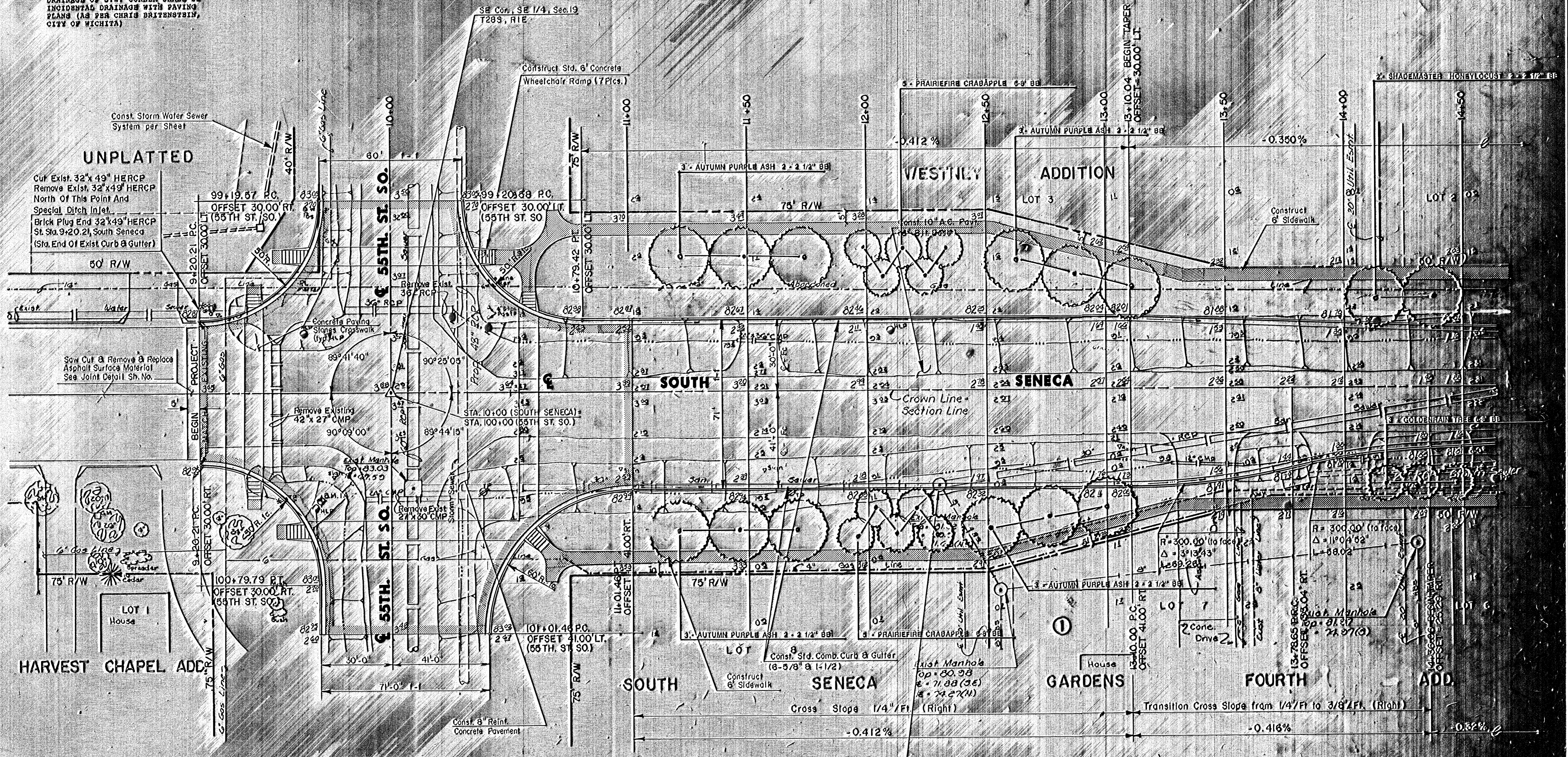


DRAINAGE OF S.W. CORNER SHALL BE INCIDENTAL DRAINAGE WITH PAVING PLANS (AS PER CHRIS BRITENSTEIN, CITY OF WICHITA)



BM 1A City of Wichita B.M. Disc Seneca & 55th St.
30' S. & 48' E. of C. of both
Elev. = 80.723

NOTE:
DO NOT REMOVE EXISTING DRAINAGE STRUCTURES UNTIL BEGINNING OF PAVEMENT WORK, AS PER C.O.W.

Exist. MH is 4x4 reinf. conc. with approx. 5' h concentric brick barrel. Remove brick barrel & install eccentric barrel with left offset such that cover will clear H.E. of curb. Replace exist. frame & cover with new. Construction shall meet City Standards. Set top MH at 82.30.

	SOUTH SENECA IMPROVEMENTS	Date: DCH Drawn by: DLM Checked by:
	PAVING PLAN 65TH ST. SO. TO 48TH ST. SO.	Date: OCT. '88 Scale:
MID-KANSAS ENGINEERING CONSULTANTS PA 3500 NORTH ROCK ROAD BUILDING 1800 WICHITA, KANSAS 67226		Sheet: 2