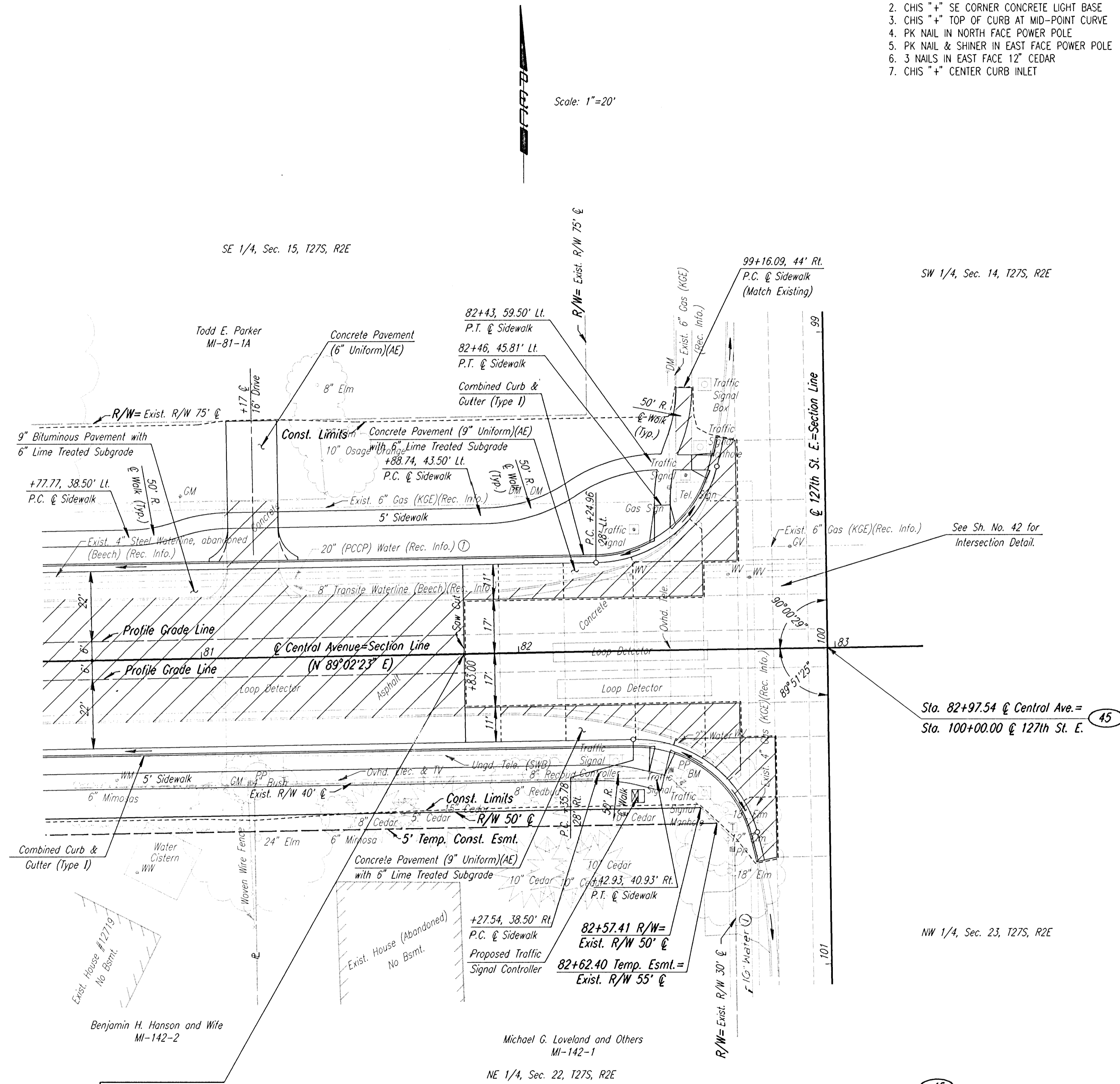


PROJECT NO.	YEAR	SHEET NO.	TOTAL SHEETS
618-34	1998	25	100

- P.I. @ STA. 82+97.54 (45)
1. FOUND LEAD PLUG 76.99' NE
 2. CHIS "+" SE CORNER CONCRETE LIGHT BASE 61.49' NW
 3. CHIS "+" TOP OF CURB AT MID-POINT CURVE 82.20' SE
 4. PK NAIL IN NORTH FACE POWER POLE 70.99' SW
 5. PK NAIL & SHINER IN EAST FACE POWER POLE 102.43' SSW
 6. 3 NAILS IN EAST FACE 12" CEDAR 129.27' NNW
 7. CHIS "+" CENTER CURB INLET

COORDINATE TABLE		
POINT NO.	NORTH COORDINATE	EAST COORDINATE
45	576802.3430	379888.8740



Scale: 1"=20'

SE 1/4, Sec. 15, T27S, R2E

SW 1/4, Sec. 14, T27S, R2E

Sta. 82+97.54 @ Central Ave. = (45)
Sta. 100+00.00 @ 127th St. E.

NW 1/4, Sec. 23, T27S, R2E

NE 1/4, Sec. 22, T27S, R2E

- SE COR. SEC. 15, T27S, R2E (45)
- @ STA. 82+97.54 CENTRAL AVENUE =
@ STA. 100+00.00 127TH STREET EAST
1. FOUND LEAD PLUG 76.99' NE
 2. CHIS "+" SE CORNER CONCRETE LIGHT BASE 61.49' NW
 3. CHIS "+" TOP OF CURB AT MID-POINT CURVE 82.20' SE
 4. PK NAIL IN NORTH FACE POWER POLE 70.99' SW
 5. PK NAIL & SHINER IN EAST FACE POWER POLE 102.43' SSW
 6. 3 NAILS IN EAST FACE 12" CEDAR 129.27' NNW
 7. CHIS "+" CENTER CURB INLET

- UTILITIES
- Water Beech
 - Water (d) Wichita Water Dept.
 - Power Kansas Gas & Electric
 - Gas Kansas Gas & Electric
 - Telephone Southwestern Bell
 - Cable TV Multimedia Cablevision
 - San. Sewer Sedgwick County

BM #201: CHIS "d" ON CONCRETE BASE OF TRAFFIC SIGNAL POLE
AT SW CORNER CENTRAL & 127TH ST. E.
42' RT. STA. 82+52 ELEV.=1369.59

BM #211: CHIS "d" ON CONCRETE BASE OF TRAFFIC SIGNAL POLE
AT SE CORNER CENTRAL & 127TH ST. E.
ELEV.=1368.50

I:\1995\95297\002\str81-87.dgn
Drawn by: bjs/maf
Plotted by: maf 8-15-97

Revisions		By	Date
SEDGWICK COUNTY BUREAU OF PUBLIC SERVICES			
CENTRAL AVENUE			
STA. 81+00 TO STA. 82+97.54			
PROJECT NO. 618-34		SEDGWICK COUNTY	
PROFESSIONAL ENGINEERING CONSULTANTS, P.A.			
ENGINEERS WICHITA, KANSAS			
Designed by	JPS	Checked by	WDH
Drawn by	BJS/MAF	Date	JULY 1997
		Job No.	95297-2