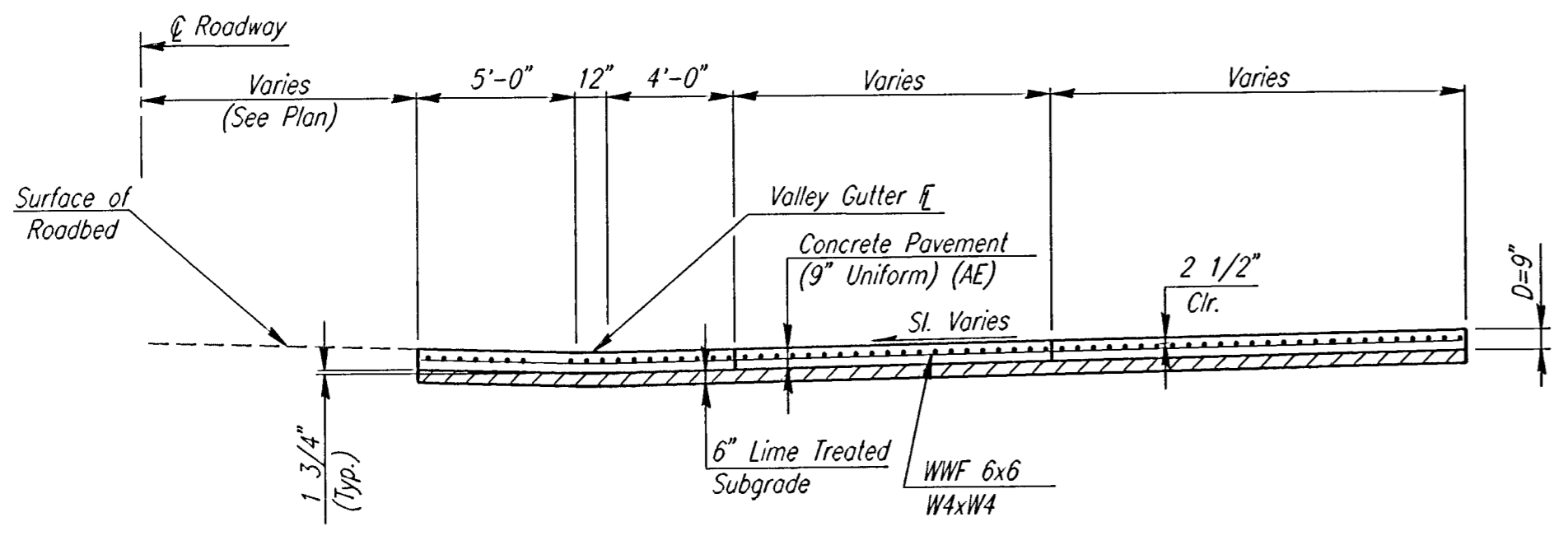
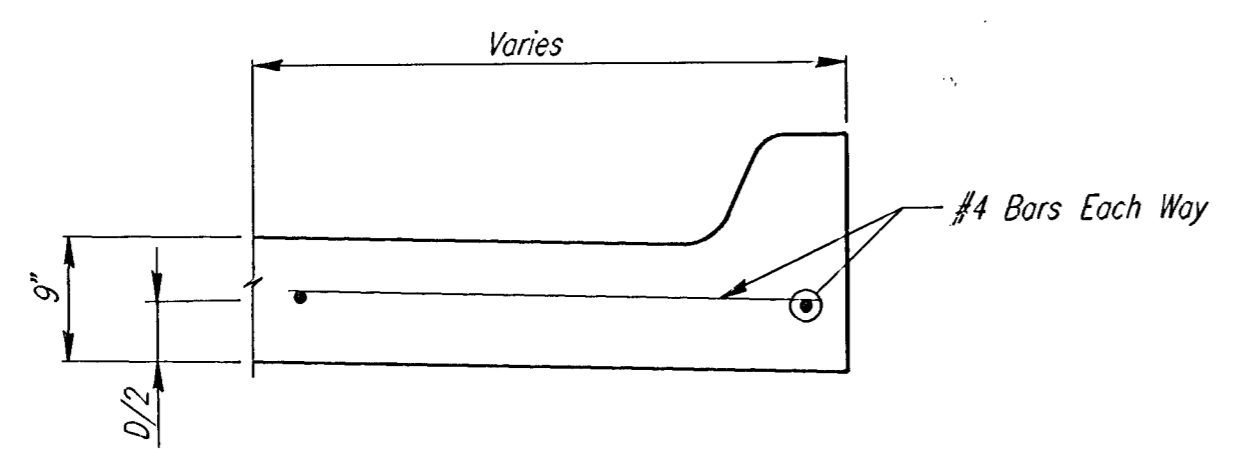


**PLAN**  
**TYPICAL REINFORCED VALLEY GUTTER**

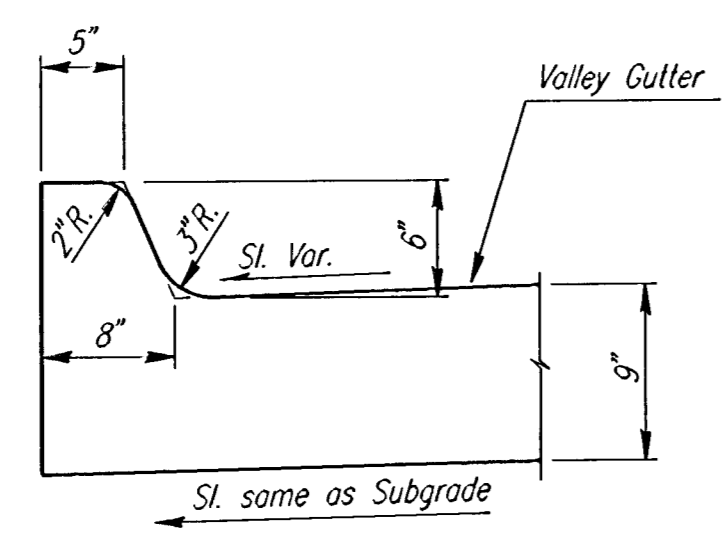


**SECTION A-A**

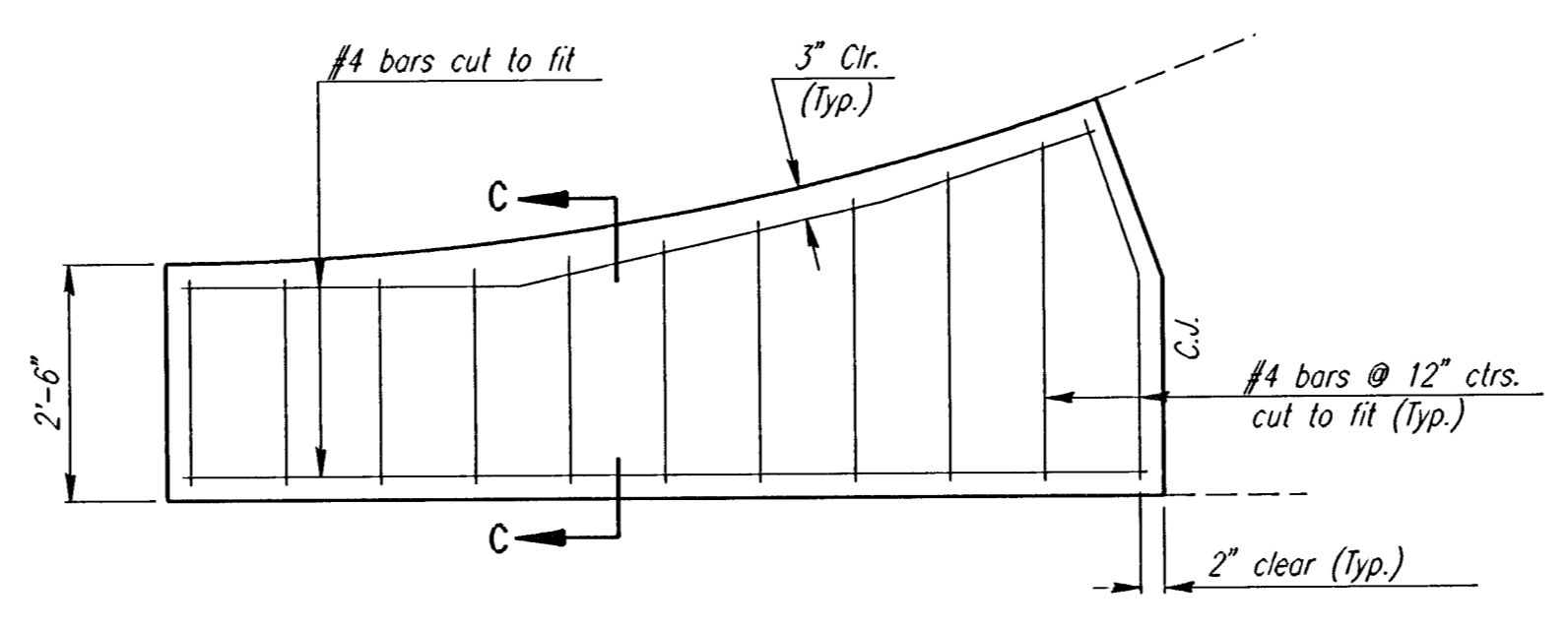
NOTE: OMIT REINFORCING MESH AT ALL JOINTS  
NOTE: ALL CONCRETE VALLEY GUTTER REINFORCEMENT SHALL BE ADEQUATELY SUPPORTED BY BAR CHAIRS IN THE REQUIRED POSITION UNLESS APPROVED OTHERWISE BY THE ENGINEER.



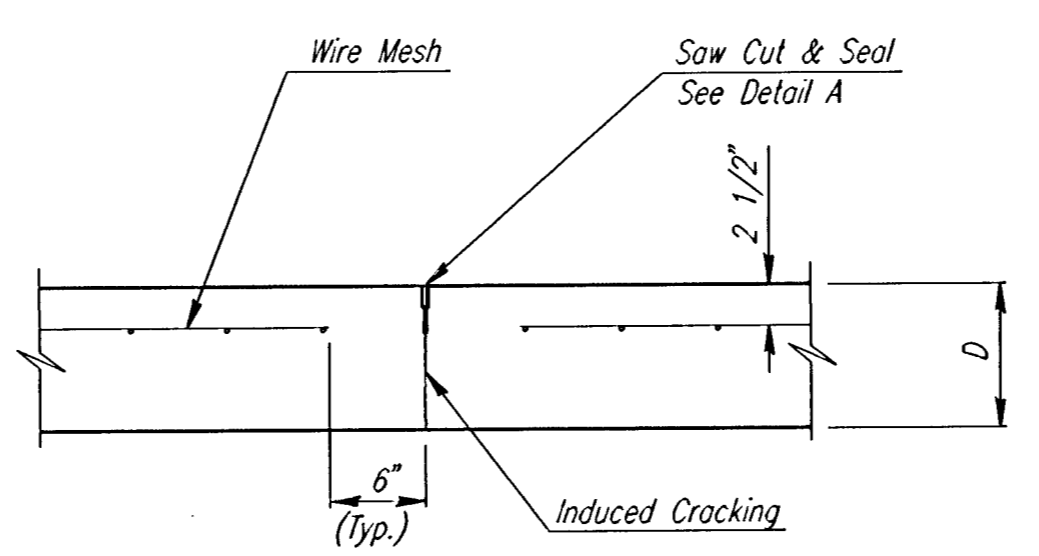
**SECTION C-C**



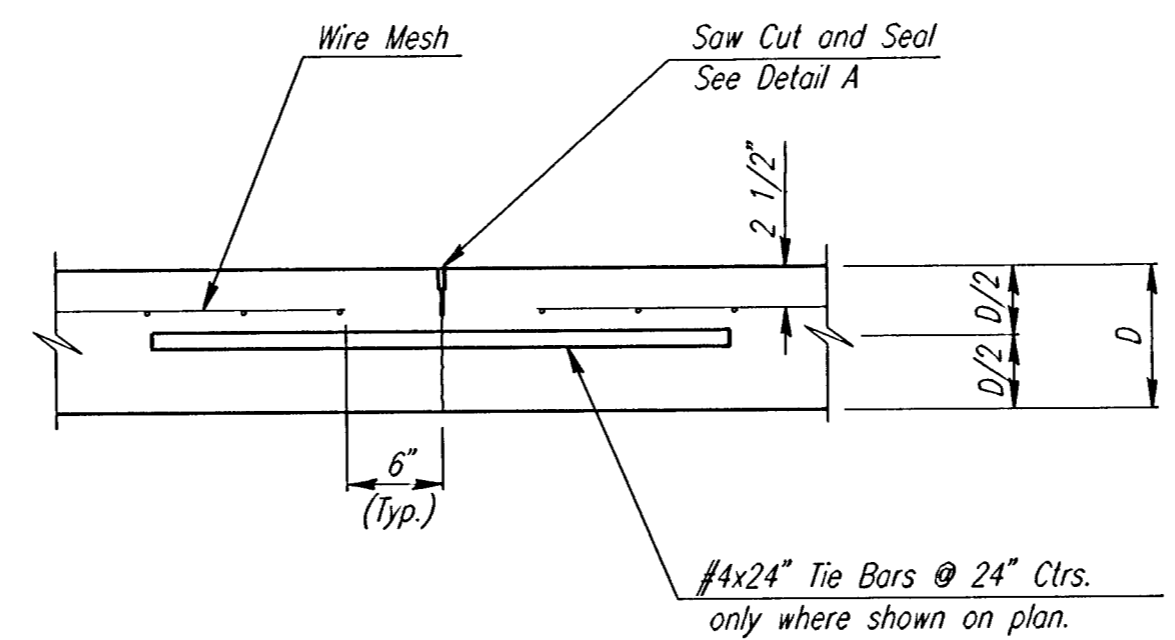
**DETAIL B**



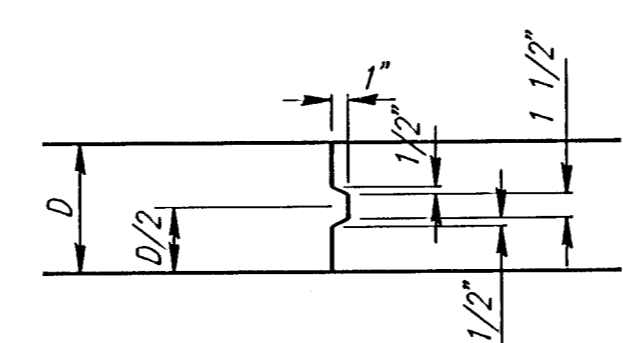
**WING REINFORCING DETAIL**  
NOTE: OMIT WIRE FABRIC REINFORCING IN THIS SECTION.



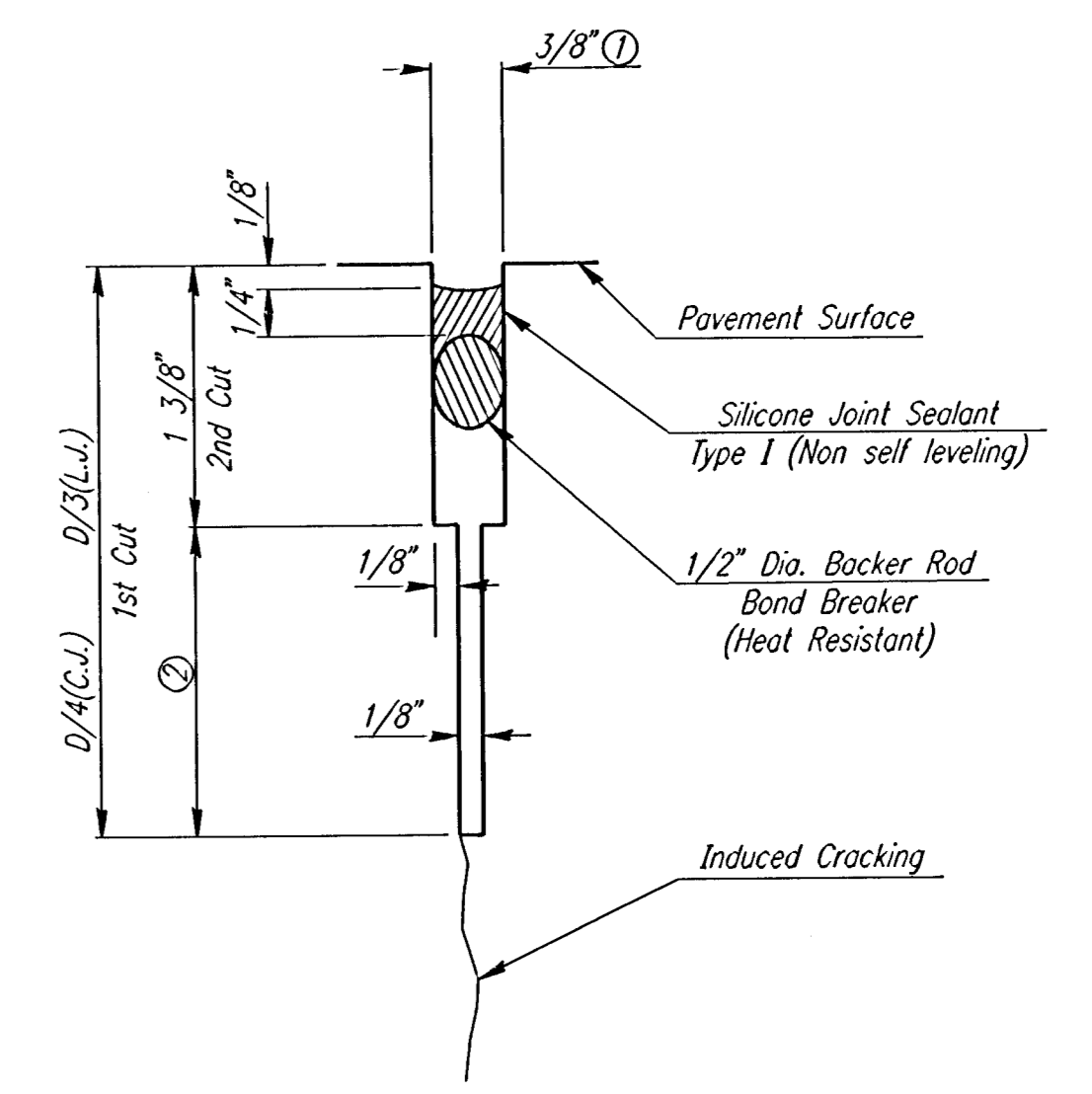
**CONTRACTION JOINT DETAIL**  
**REINFORCED PAVEMENT**  
**(C.J.)**



**LONGITUDINAL JOINT DETAIL**  
**REINFORCED PAVEMENT**  
**(TRANSVERSE SECTION)**  
**(L.J.)**

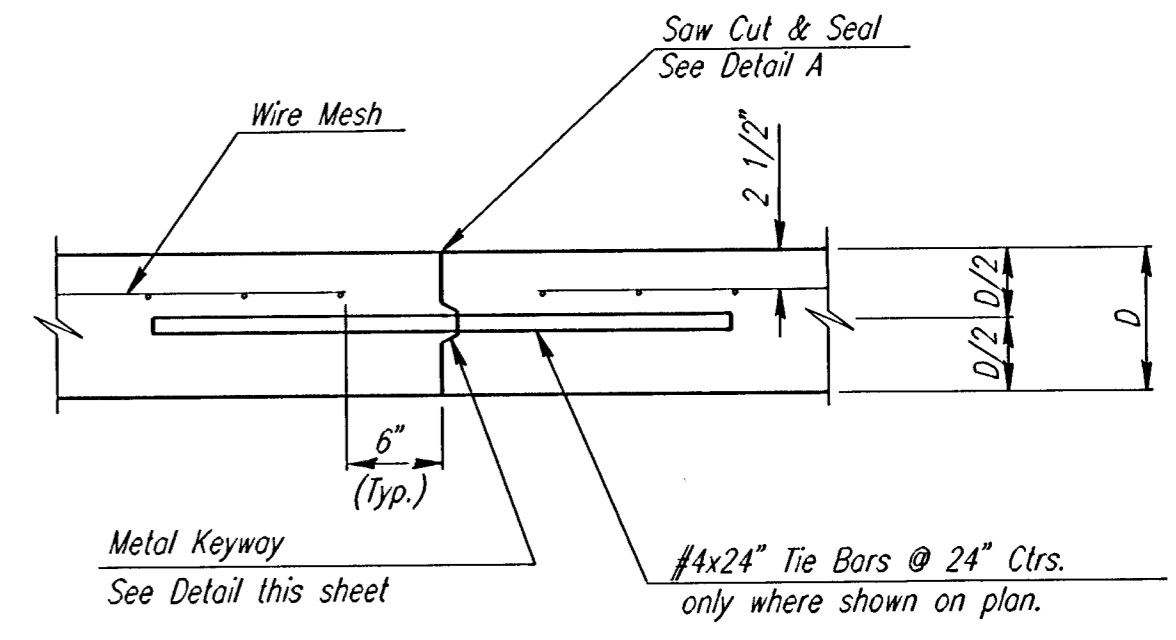


**KEYWAY DETAIL**



**DETAIL A**

- ① To be accomplished in 2 cuts for Longitudinal Joints and Contraction Joints. Initial cut to be 1/8" wide.
- ② Eliminate bottom of cut when metal keyway is used as part of Longitudinal or Transverse Construction Joint.



**LONGITUDINAL CONSTRUCTION JOINT DETAIL**  
**REINFORCED PAVEMENT**  
**(TRANSVERSE SECTION)**  
**(ALTERNATE L.J.)**

i:/1995/95297/002/valguld.dgn  
Drawn by: ma  
Plotted by: ma 7-24-97

No.	Revisions	By	Date
SEDGWICK COUNTY BUREAU OF PUBLIC SERVICES			
<b>VALLEY GUTTER DETAILS</b>			
PROJECT NO. 618-34		SEDGWICK COUNTY	
<b>PROFESSIONAL ENGINEERING CONSULTANTS, P.A.</b> ENGINEERS WICHITA, KANSAS			
Designed by	WDH	Checked by	WDH
Drawn by	MAF	Date	JULY 1997 Job No. 95297-2