

**General Notes**

Class A Concrete shall be used throughout. At the Contractors option, Class A Concrete (AE) may be used. Bevel all exposed edges with a 3/4" triangular molding or an approved edging tool. No deductions in concrete quantities have been made for pipe openings.

Reinforcing Steel shall be a minimum Grade 60 ASTM A615.

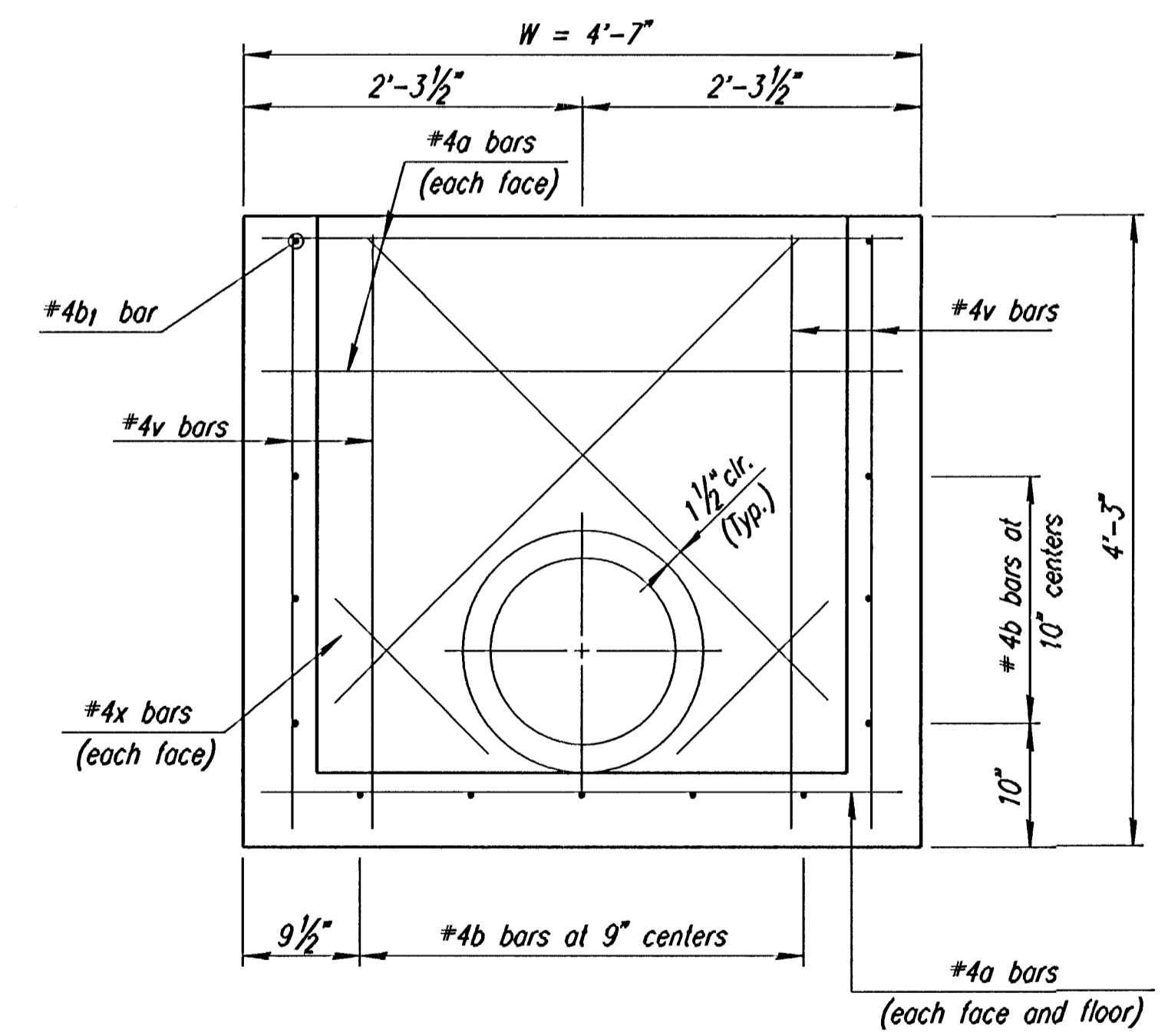
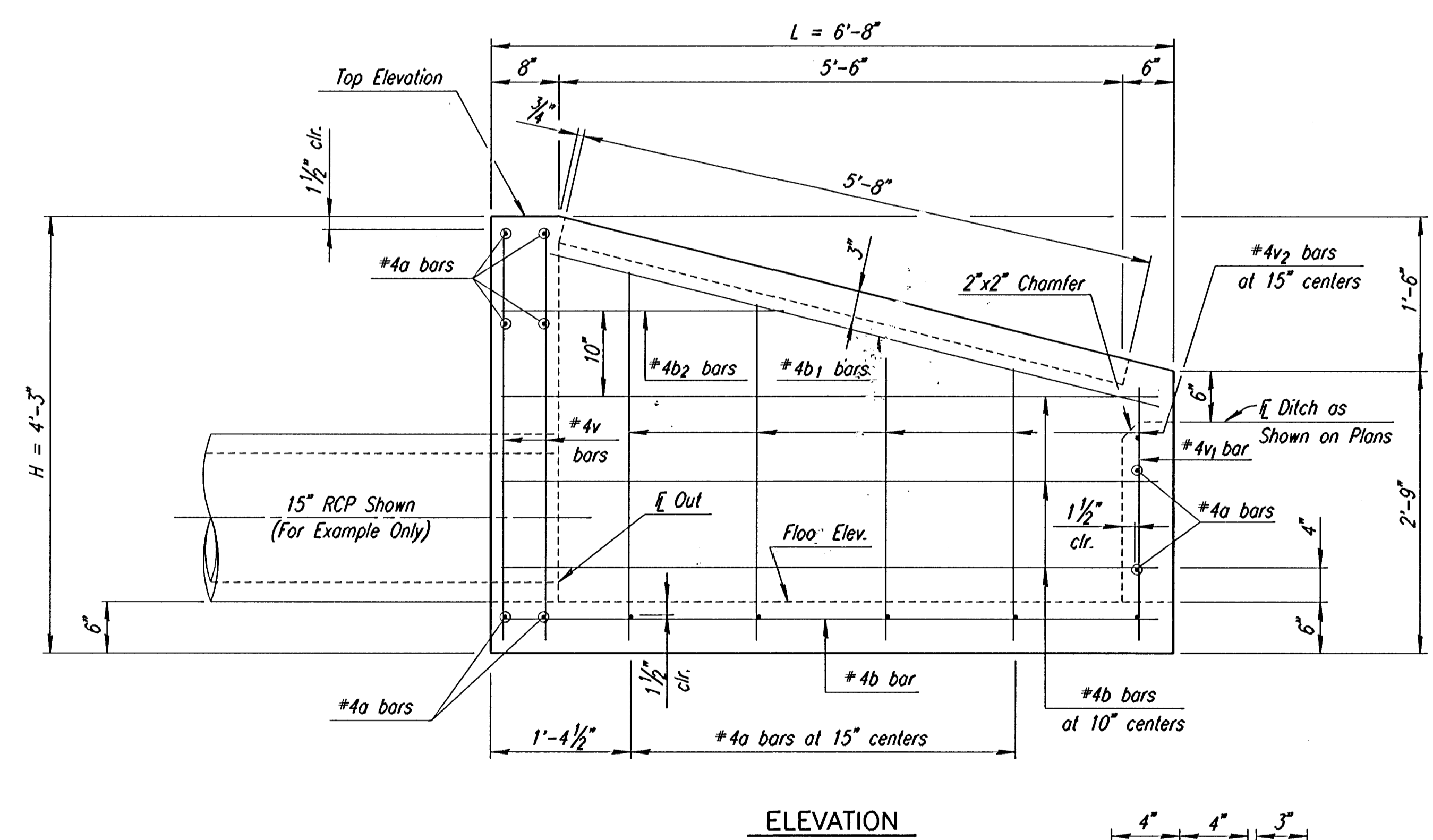
All dimensions relative to placement of reinforcing are to the centerline of bars unless otherwise noted. All Clearances are 1 1/2" unless otherwise noted.

Pipes will enter and leave the Inlet at various positions. Field bend or cut reinforcing to clear pipes.

Inlet invert shall be shaped with unreinforced Class A Concrete as shown in various examples on Standard No. 633.

Inlets shall be measured and paid for at the contract unit price bid per each. This shall be considered full compensation for all excavation, backfilling, materials, labor, equipment, tools and incidentals necessary to complete the work.

Structural steel used to fabricate the grate shall comply with ASTM A36. The unit shall be hot dipped, galvanized after fabrication, in accordance with ASTM A123 except the weight of coating shall average not less than 2.0 ounces per square foot of actual surface and no individual test shall show less than 1.8 ounces of coating per square foot of actual surface area.

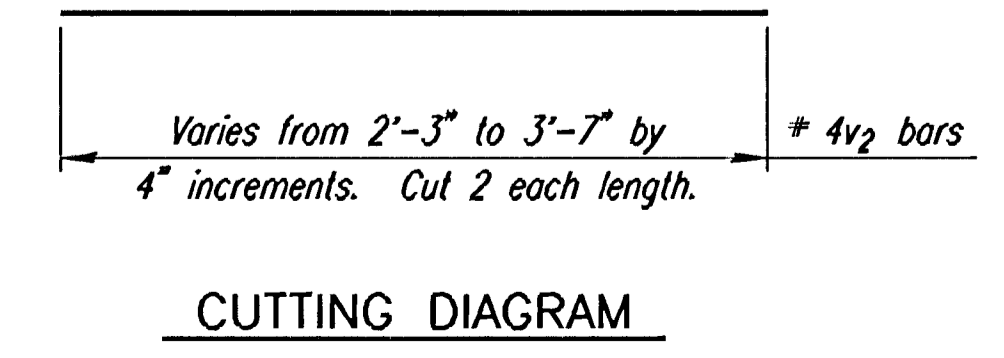
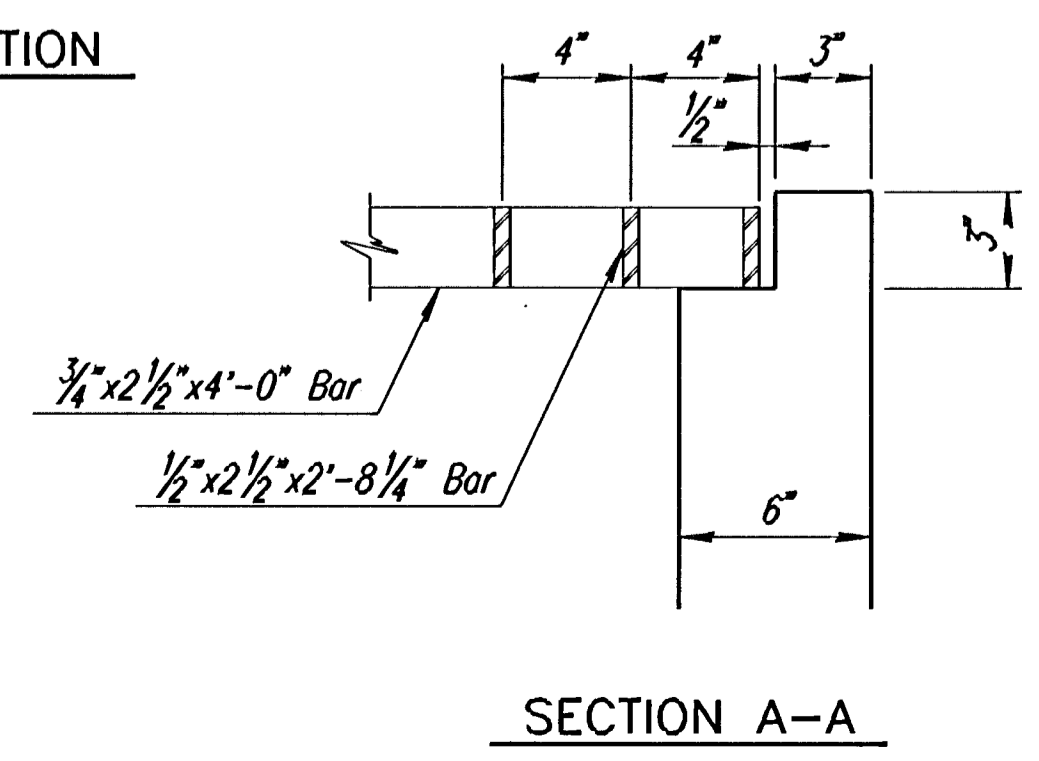


**BILL OF MATERIALS FOR DITCH INLET TYPE II**

Bar	No.	Size	Length
a	14	#4	4'-4"
b	13	#4	6'-5"
b1	2	#4	6'-7"
b2	2	#4	2'-9"
v	8	#4	4'-0"
v1	5	#4	2'-0"
v2	10	#4	*
x	8	#4	**
Class III Excavation			9.5 Cu. Yds.
Class A Concrete			1.8 Cu. Yds.
Reinforcing Steel			165 Lbs.
Structural Steel			414 Lbs.

\* See Cutting Diagram.

\*\* Length Varies-Cut to meet pipe opening requirements. (2'-6" length used for Reinforced Steel weight).



1			
No.	Revisions	By	Date
SEDGWICK COUNTY BUREAU OF PUBLIC SERVICES			
<b>DITCH INLET TYPE II</b>			
PROJECT NO. 618-34		SEDGWICK COUNTY	
<b>PROFESSIONAL ENGINEERING CONSULTANTS, P.A.</b>			
ENGINEERS WICHITA, KANSAS			
Designed by	WDH	Checked by	
Drawn by	DJW	Date	July 1997 Job No. 95297-2