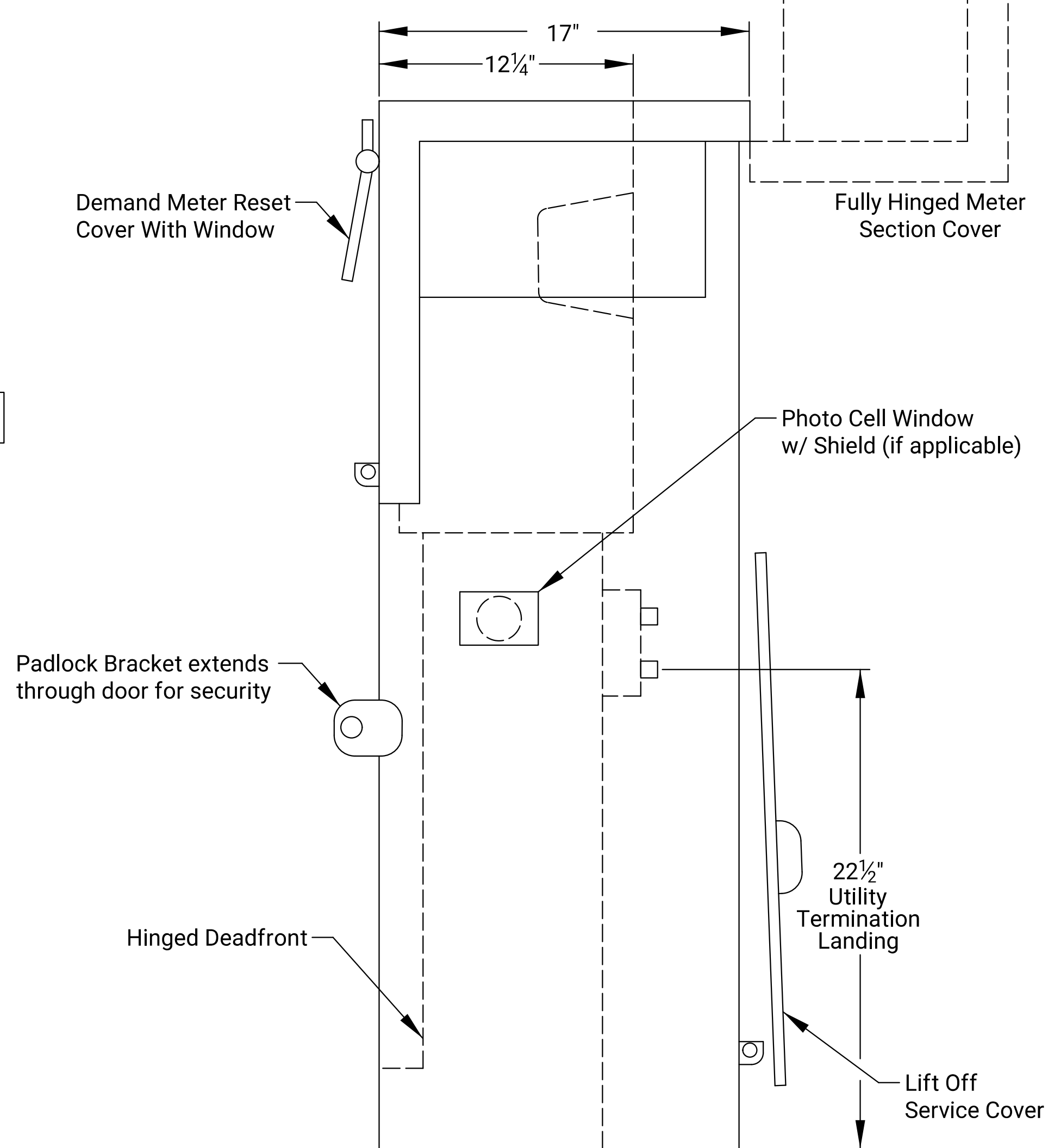
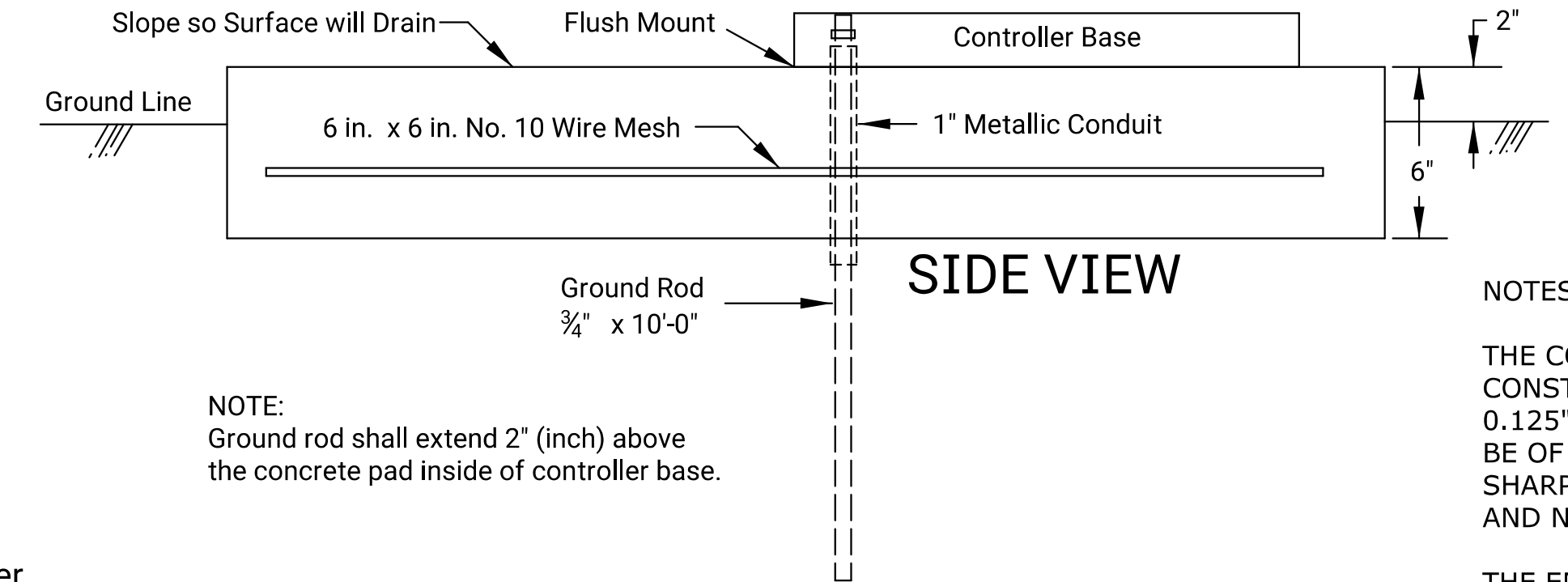


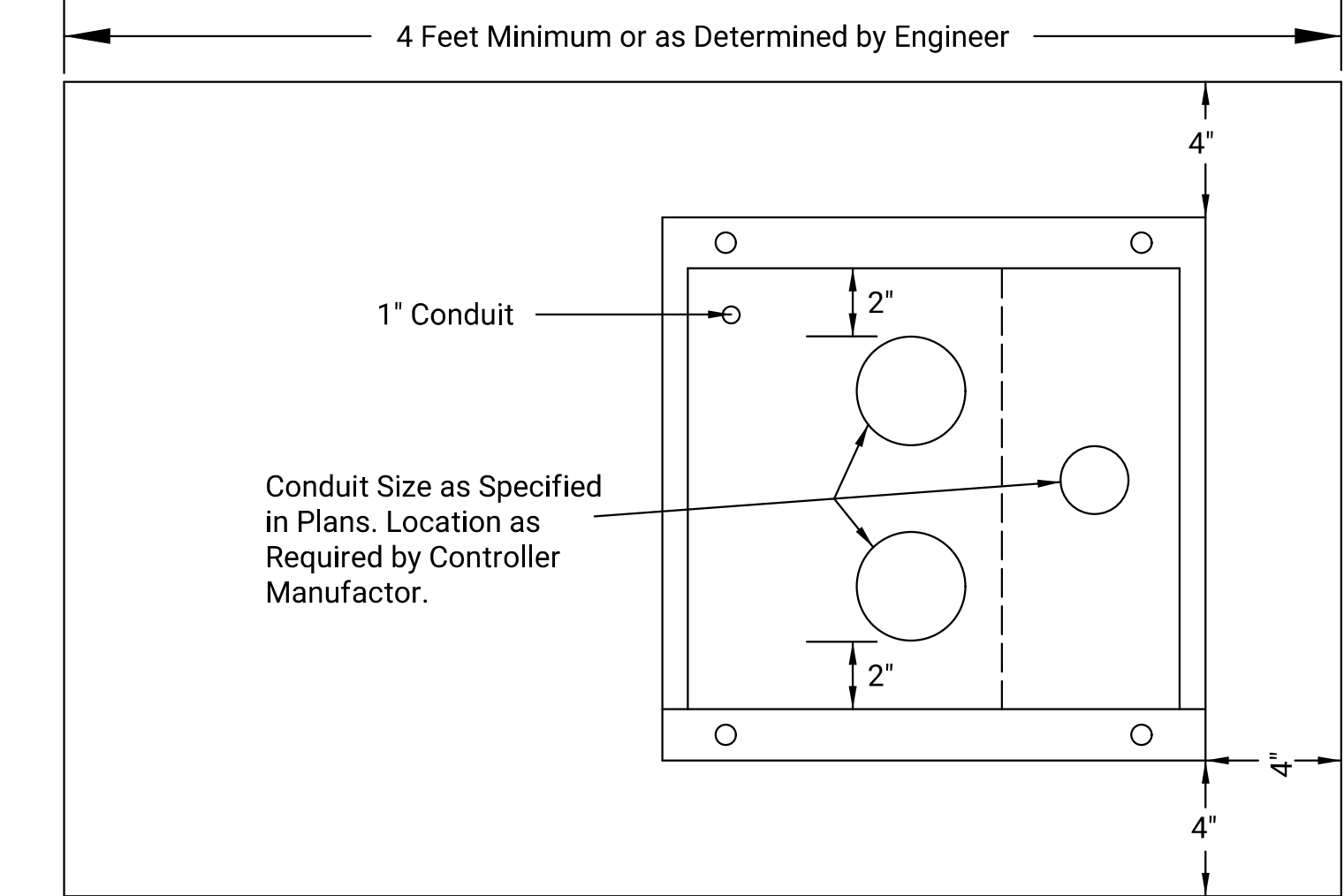
FRONT VIEW



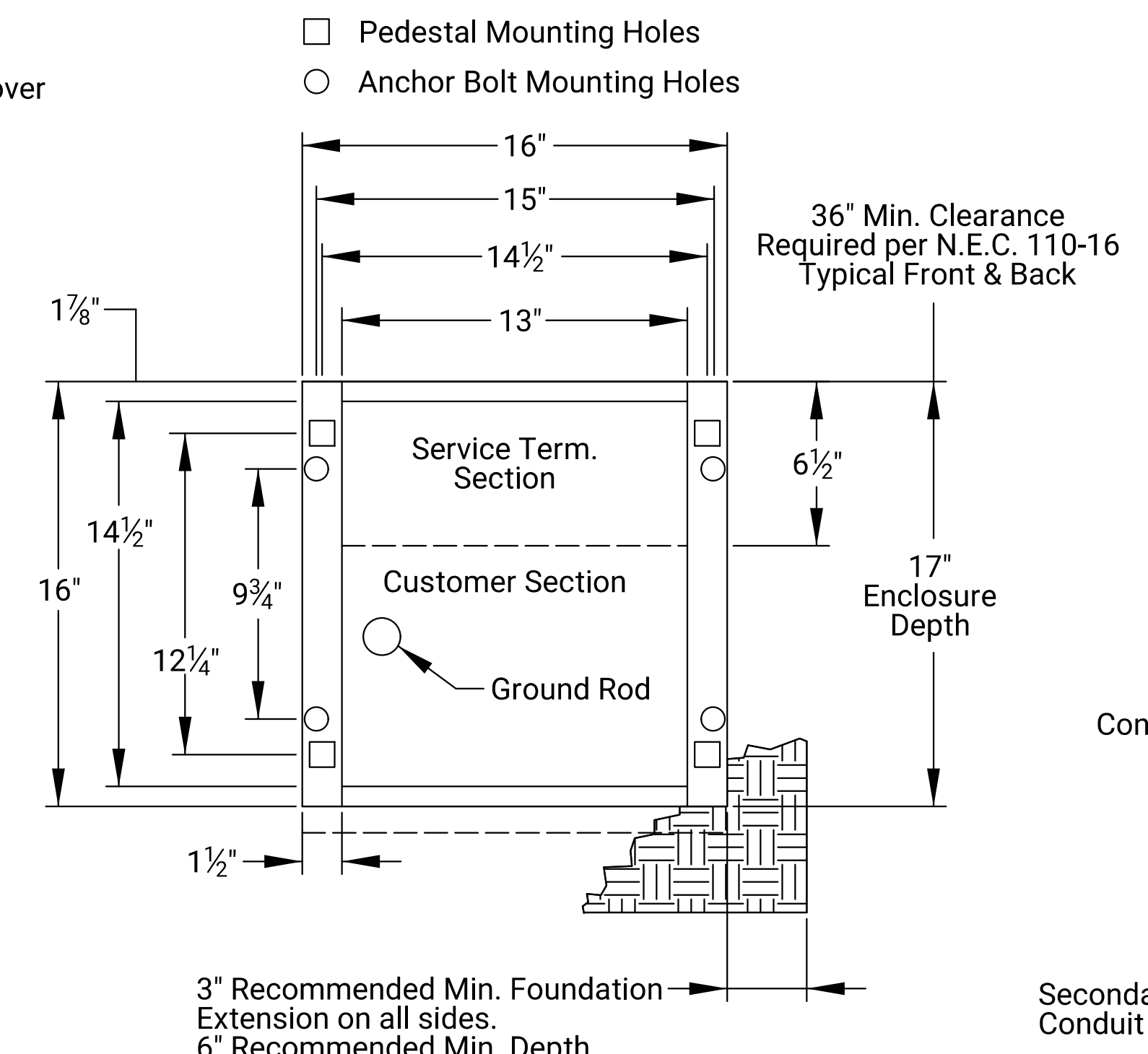
SIDE VIEW



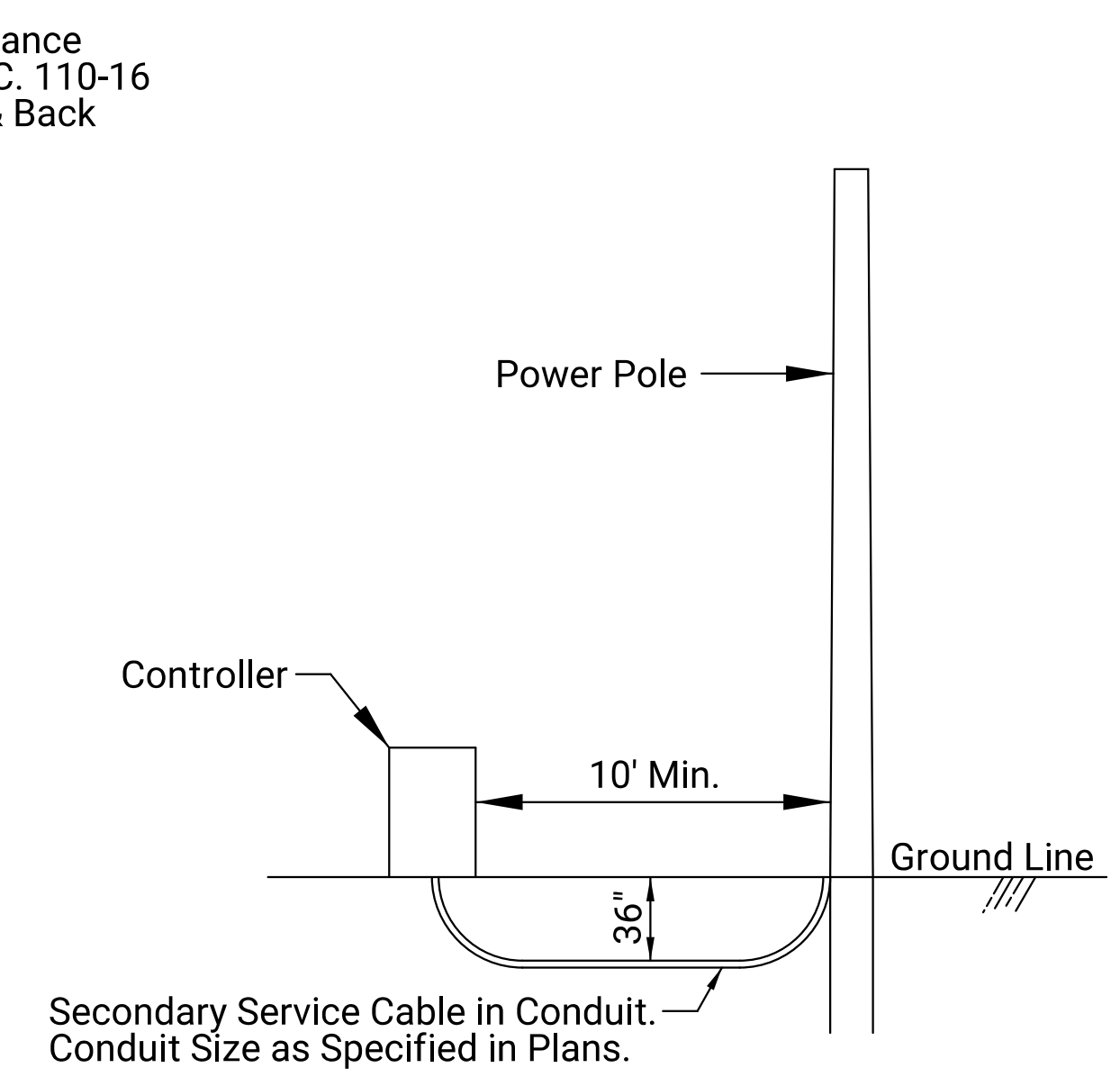
SIDE VIEW



TOP VIEW

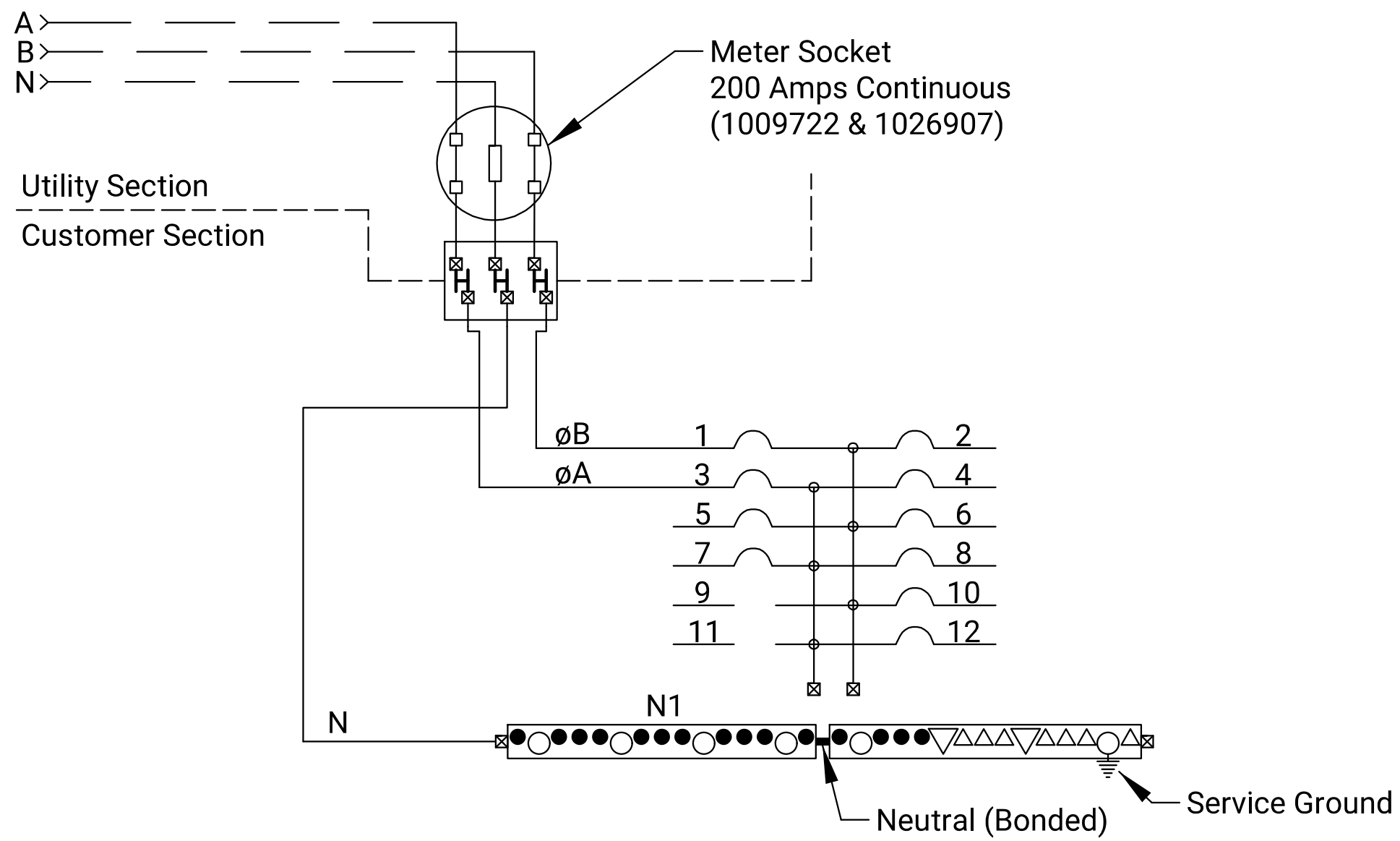


MOUNTING BASE DETAIL

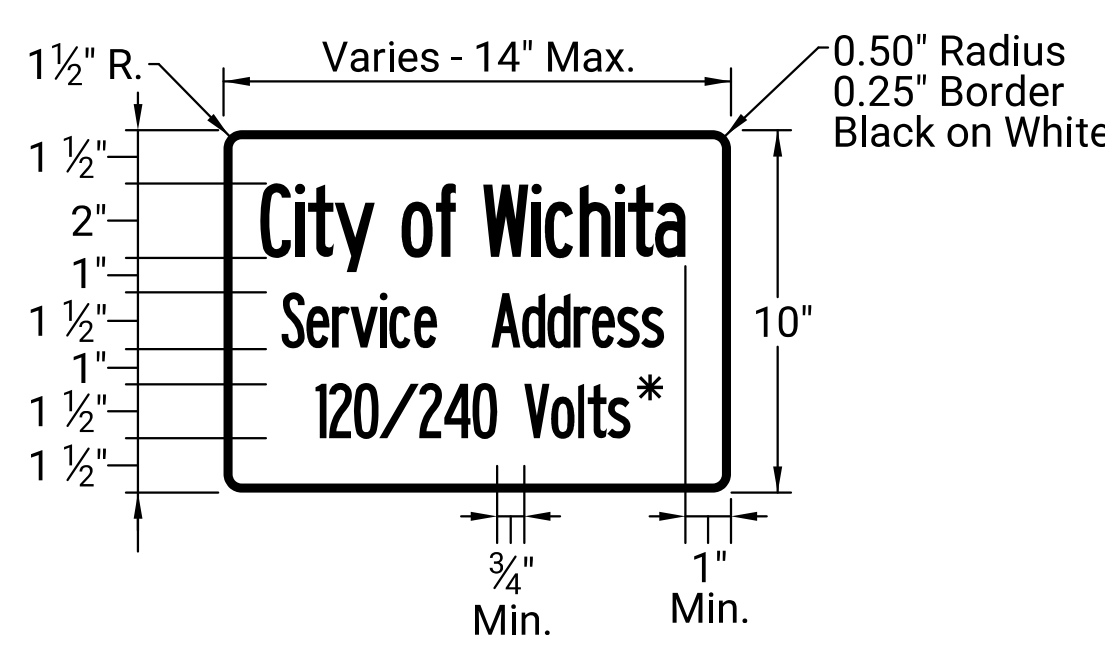


POWER ARRANGEMENT

CAUTION:
Lever By-pass. Circuit may be live with meter removed.
Meter is bypassed when handle is rotated upward.



WIRING DIAGRAM



NAMEPLATE DETAIL

1. Apply on "street side" of cabinet facing the street referenced in the address
- * 2. Voltage as Provided by Electric Service
3. Nameplate shall match cabinet material type

NOTES:

THE CONTROLLER CABINET SHALL BE CONSTRUCTED OF 5052 ALLOY ALUMINUM 0.125" (INCH) THICK. THE CABINET SHALL BE OF CLEAN CUT DESIGN HAVING NO SHARP EDGES, CORNERS OR PROJECTIONS AND NEMA 3R CONSTRUCTION

THE ENCLOSURE SHALL INCREASE IN SIZE WITH THE NUMBER OF CIRCUITS.

THE CUSTOMER DOOR SHALL BE HINGED THE FULL LENGTH OF THE DOOR AND HAVE SUITABLE MEANS OF HOLDING THE DOOR IN THE FULLY OPEN POSITION. PADLOCK BRACKET SHALL EXTEND THROUGH DOOR FOR SECURITY.

THE DEAD FRONT DOOR SHALL BE HINGED AND HAVE 3/4 TURN CLIPS OR OTHER SUITABLE MEANS OF LOCKING.

SERVICE ENTRANCE IN BACK OF CONTROLLER SHALL HAVE A HINGED OR A LIFT OFF COVER WITH PAD LOCK PROVISIONS.

THE SECONDARY BREAKER FOR THE PHOTO-CELL CIRCUIT SHALL BE 277 VOLT, 15 AMP SINGLE POLE.

THE WIRING FROM PB1 AND PB2 TO T1 THROUGH T4 SHALL BE NO. 6 AWG THW.

THE WIRING FOR THE LOAD AND LINE SIDE OF THE MAIN BREAKER SHALL BE THE SAME SIZE WITH THE WIRE.

THE WIRING FOR THE PHOTO ELECTRIC CONTROL CIRCUIT SHALL BE NO. 12 AWG THW.

ALL WIRING AND WIRING METHODS SHALL COMPLY WITH THE MOST CURRENT NATIONAL ELECTRIC CODE STANDARDS. ANY CHANGES TO THESE STANDARDS SHALL BE APPROVED BY THE AUTHORITY HAVING JURISDICTION.

PROVIDE NATURAL ALUMINUM FINISH

CONSULTANTS:

HOOPER ROAD MULTI-USE PATH & TRAFFIC SIGNAL
ZOO BLVD. TO 29TH STREET NORTH
WICHITA, KANSAS
CITY OF WICHITA

REVISIONS:	DESCRIPTION	DATE	MARK